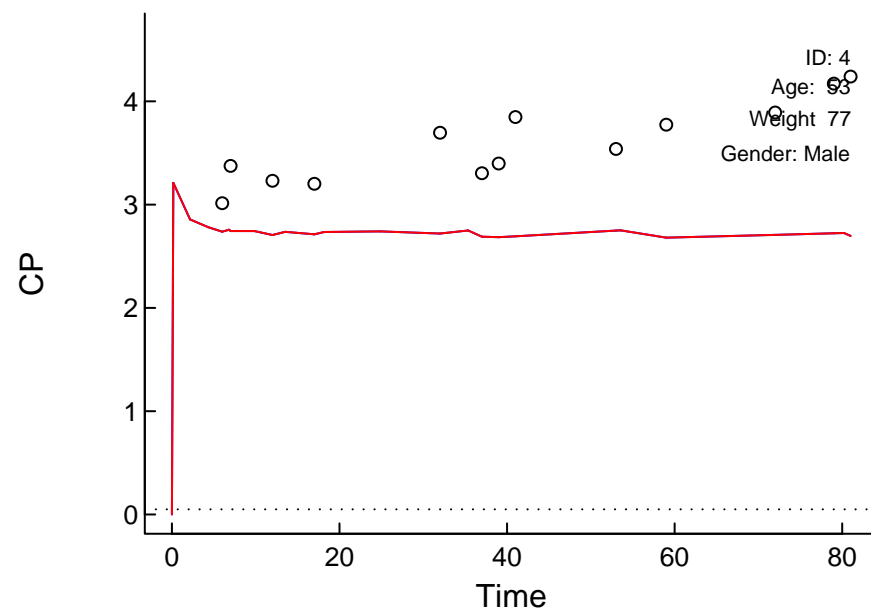
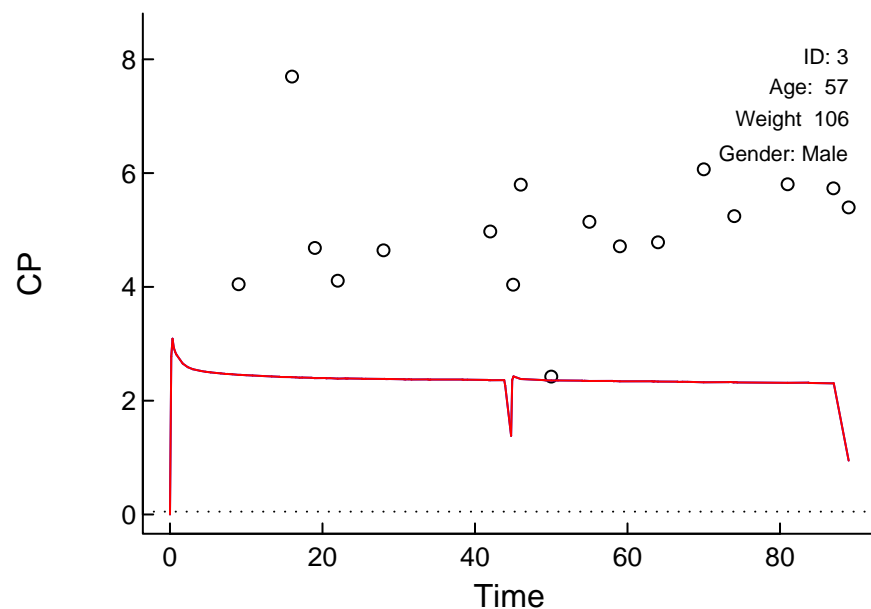
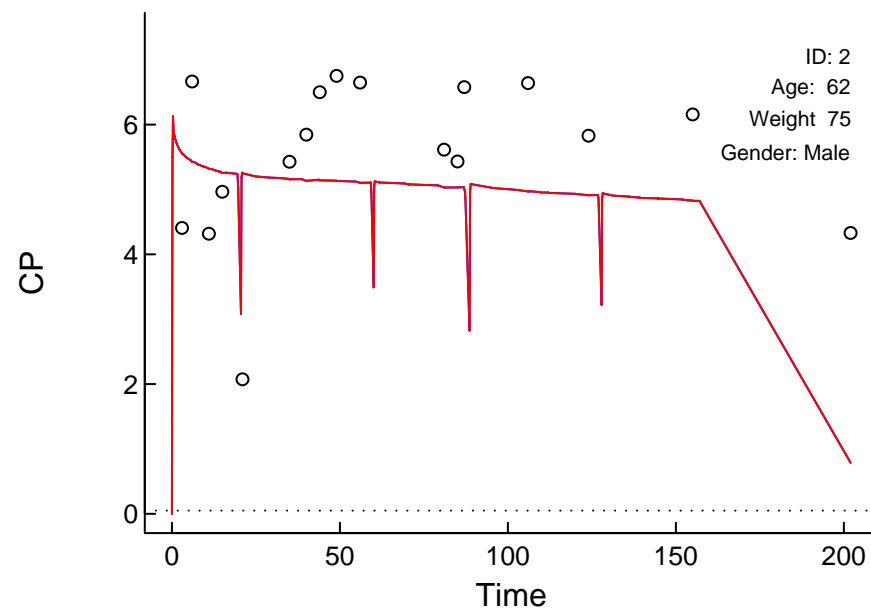
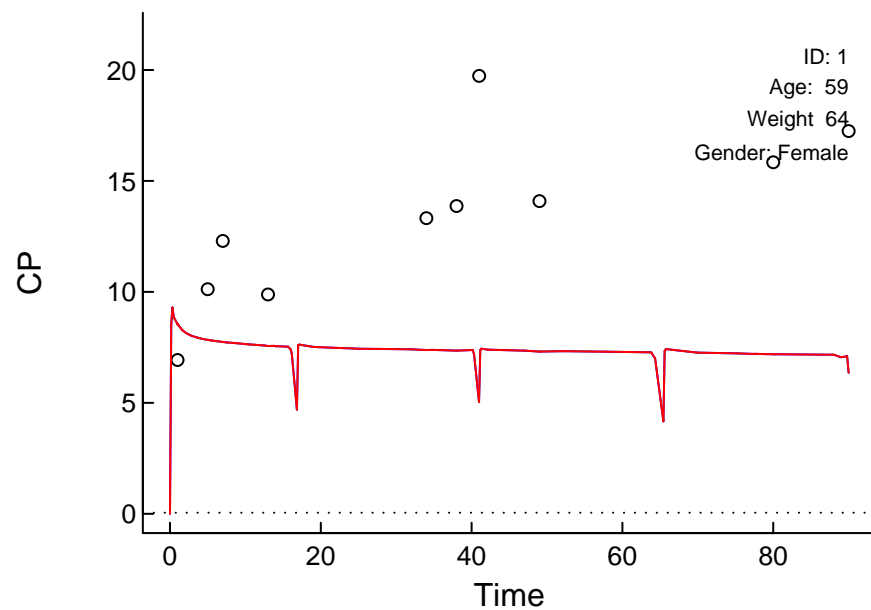


# "Control.Schnider.Simulation.txt" (24266.281)

Linear Scale

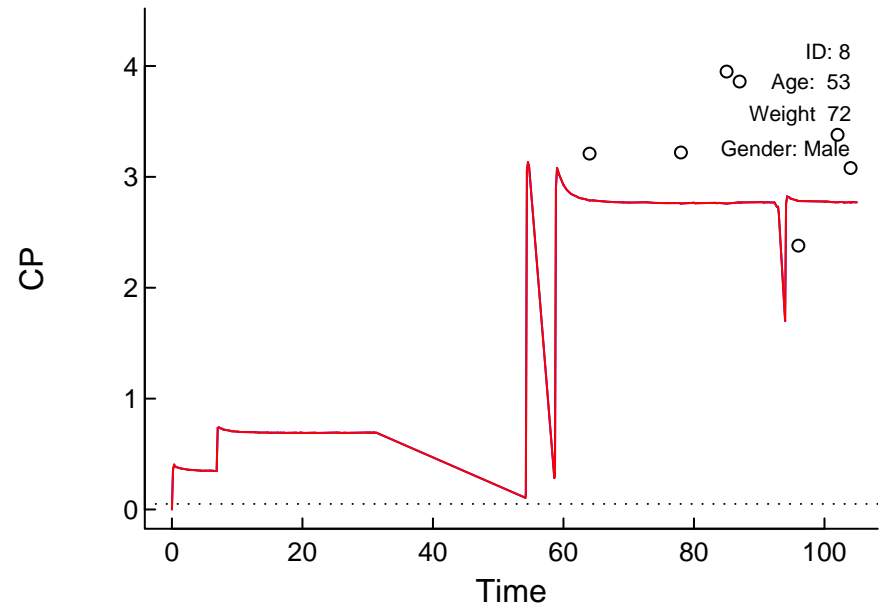
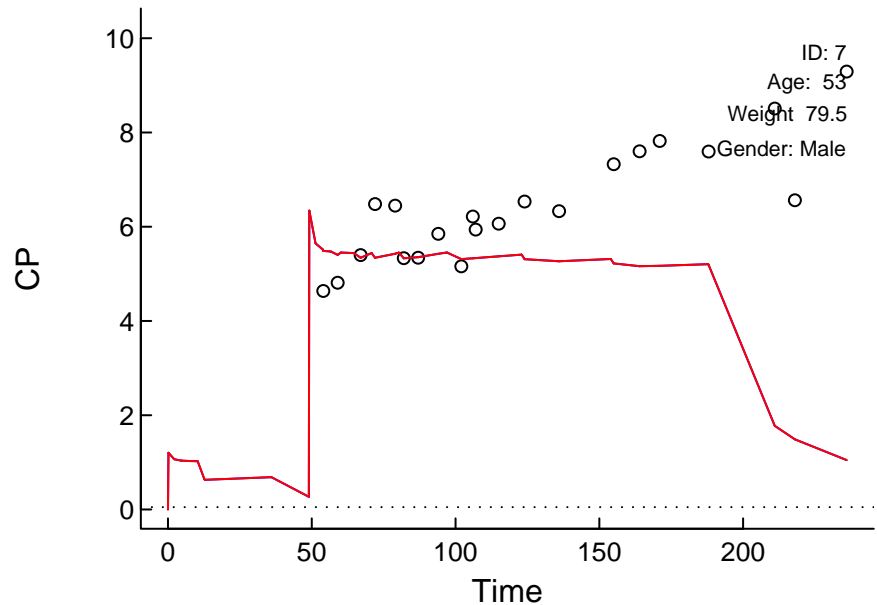
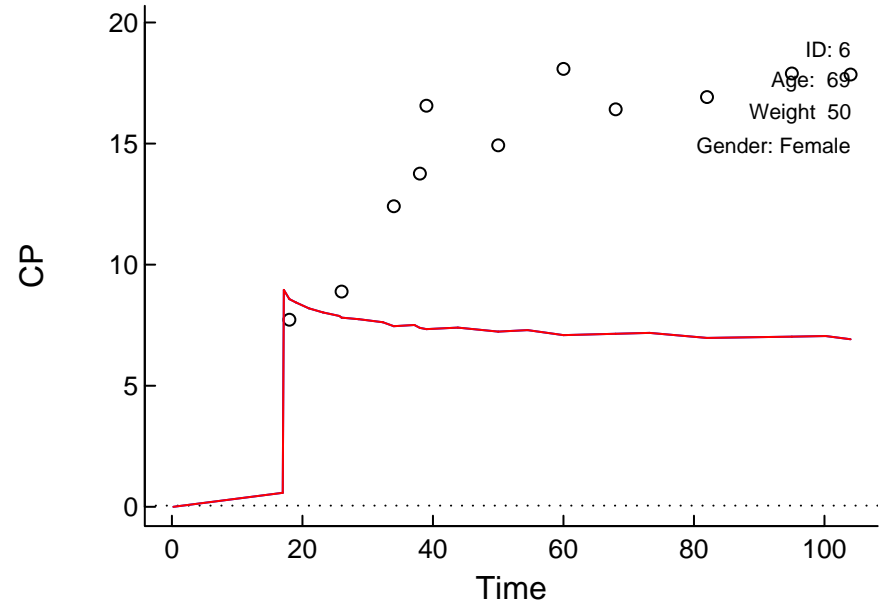
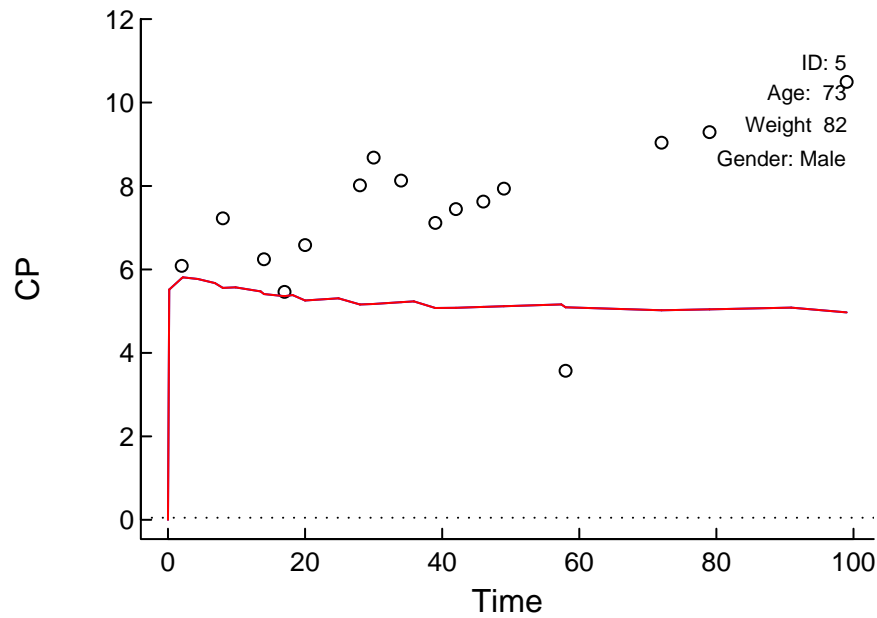
Circles: Observed; X: BQL; Red: Post Hoc; Blue: Population; Arrows: Doses; Dotted: LOQ



# "Control.Schnider.Simulation.txt" (24266.281)

Linear Scale

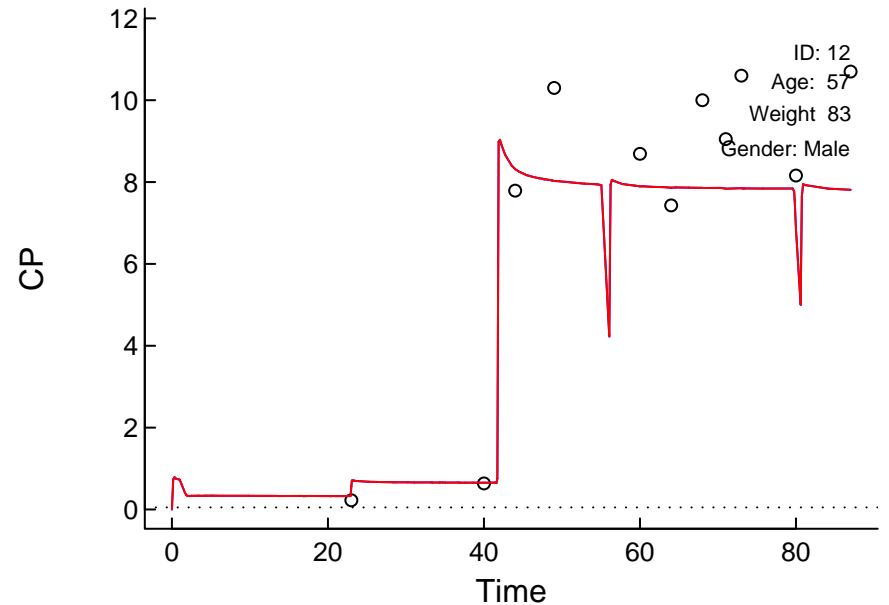
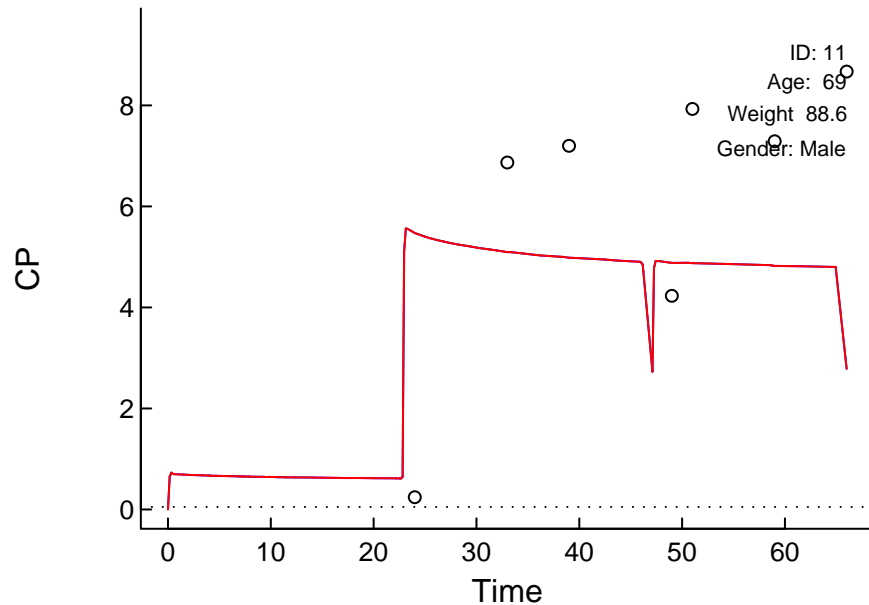
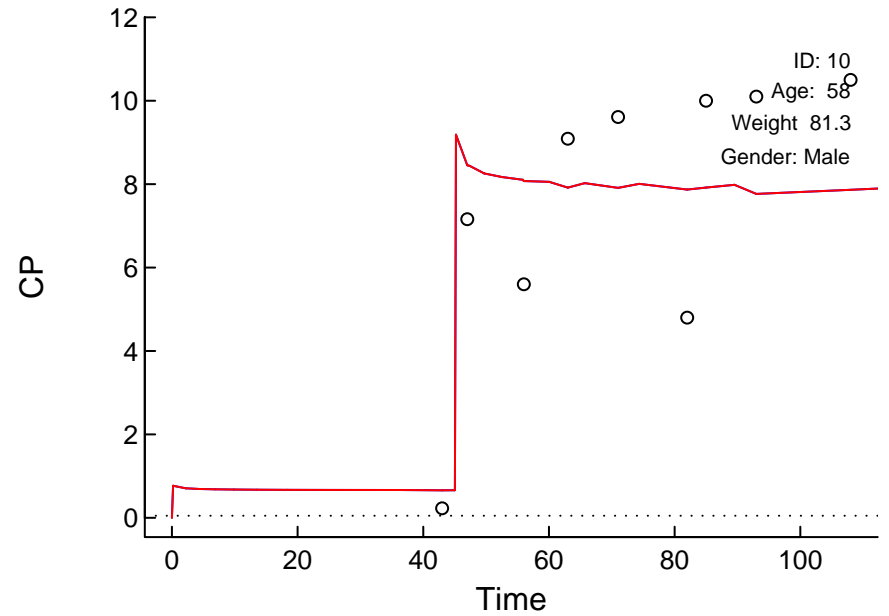
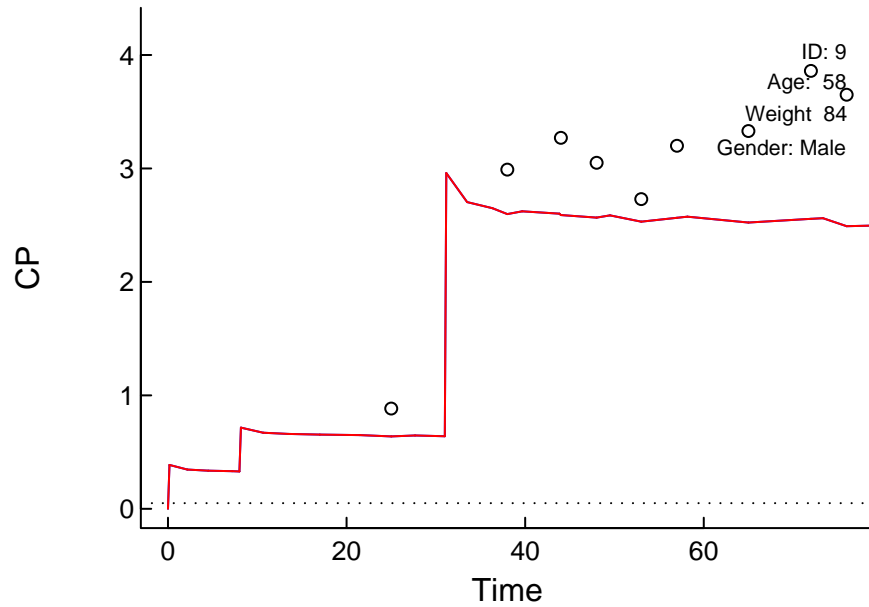
Circles: Observed; X: BQL; Red: Post Hoc; Blue: Population; Arrows: Doses; Dotted: LOQ



# "Control.Schnider.Simulation.txt" (24266.281)

Linear Scale

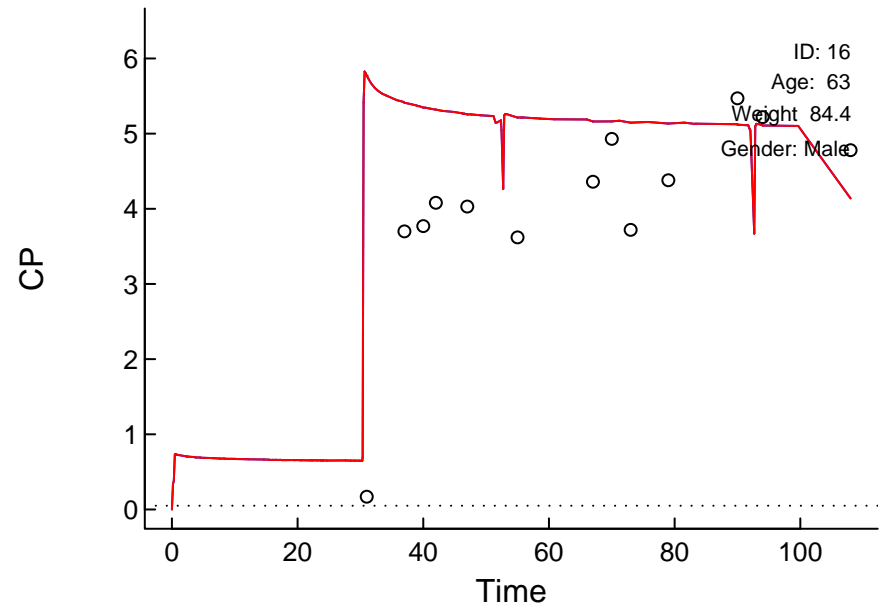
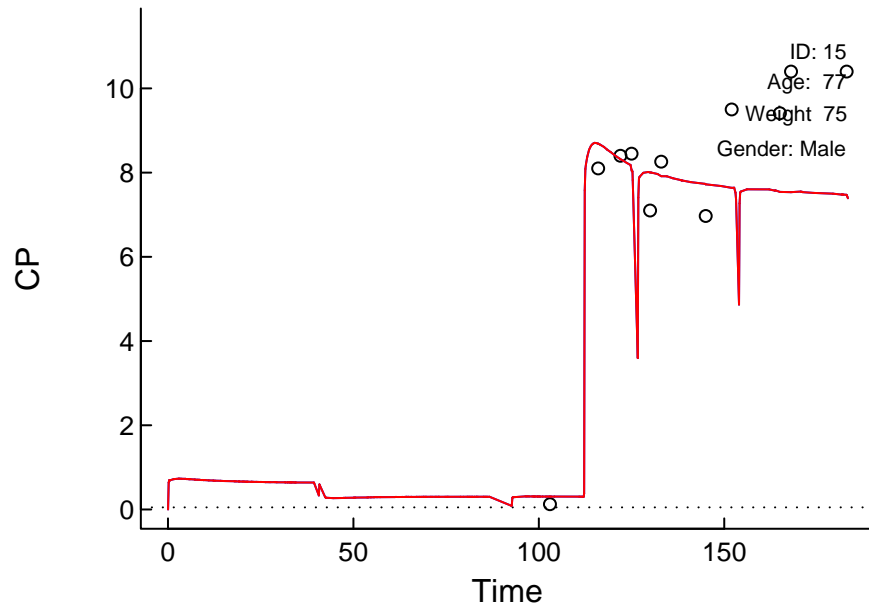
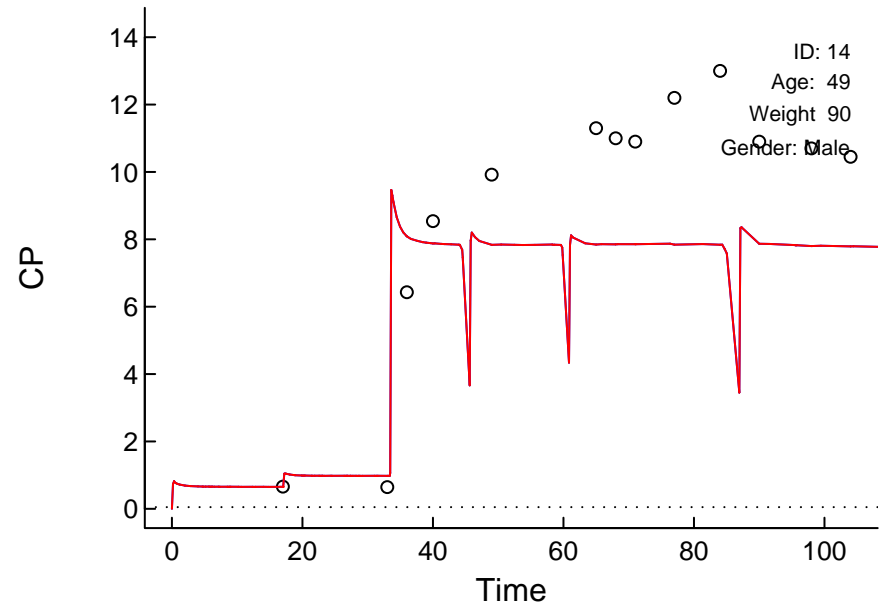
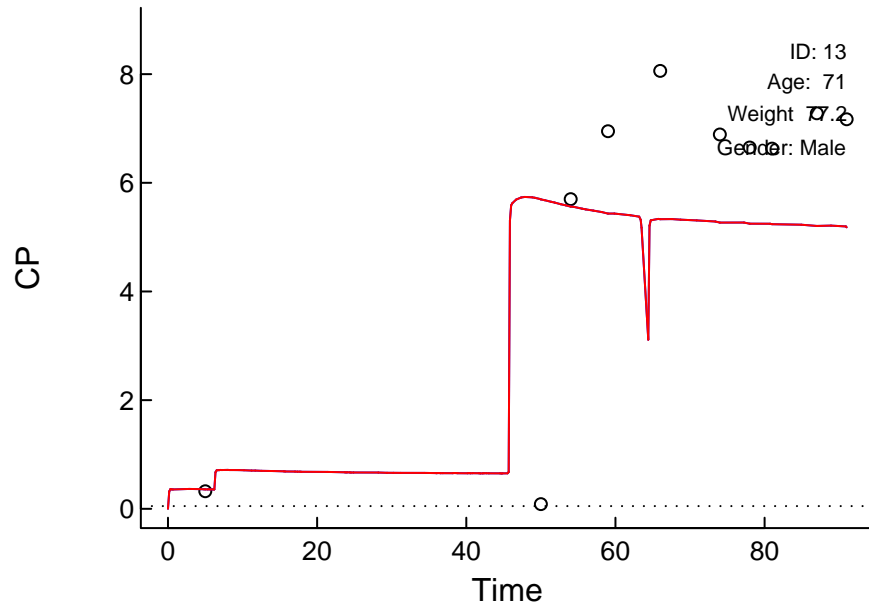
Circles: Observed; X: BQL; Red: Post Hoc; Blue: Population; Arrows: Doses; Dotted: LOQ



# "Control.Schnider.Simulation.txt" (24266.281)

Linear Scale

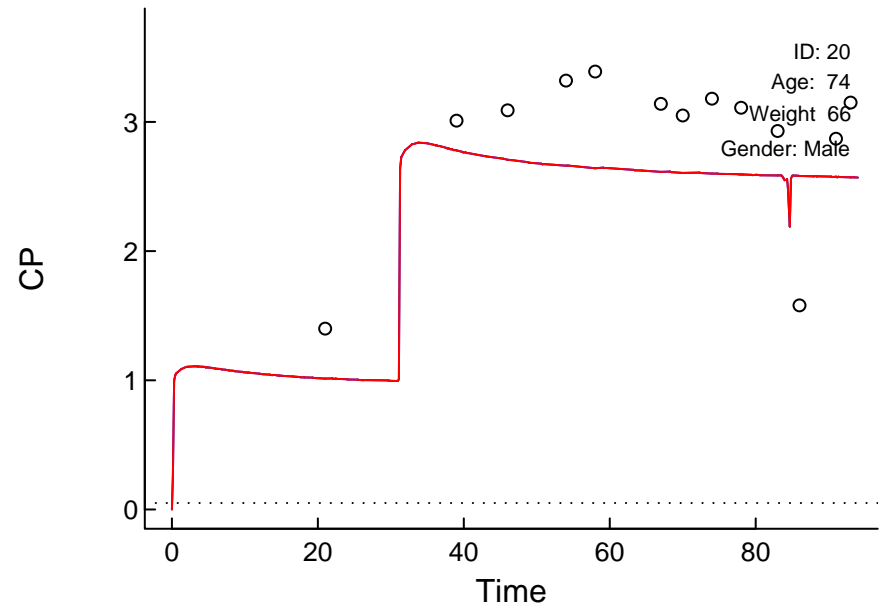
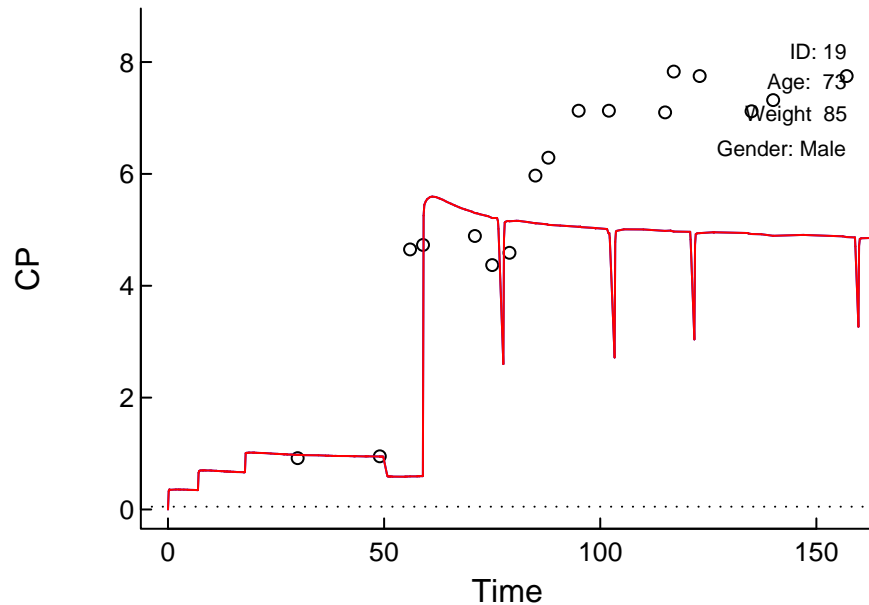
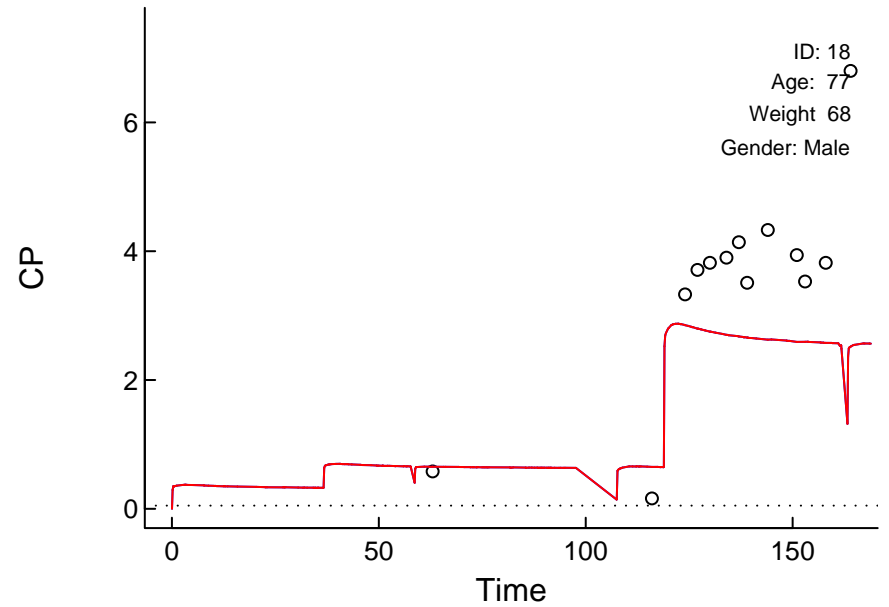
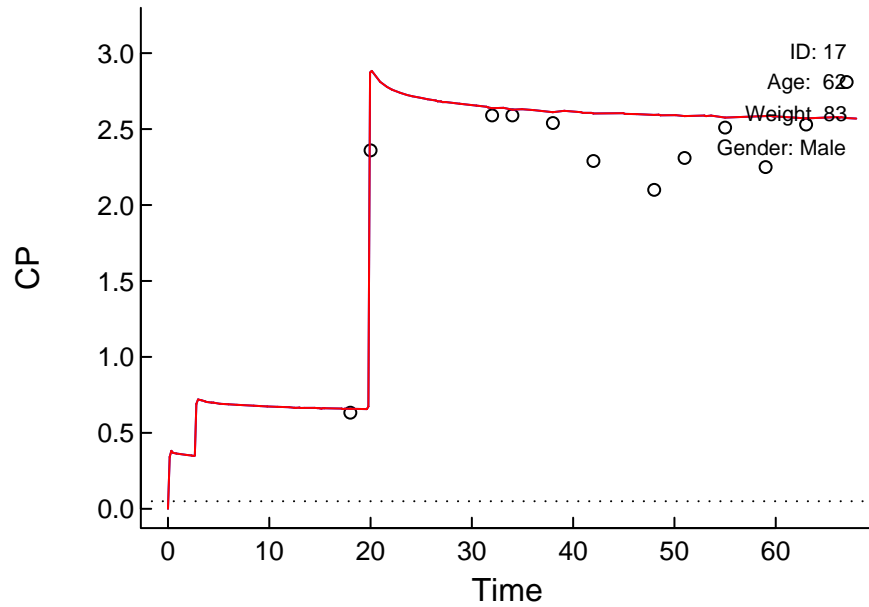
Circles: Observed; X: BQL; Red: Post Hoc; Blue: Population; Arrows: Doses; Dotted: LOQ



# "Control.Schnider.Simulation.txt" (24266.281)

Linear Scale

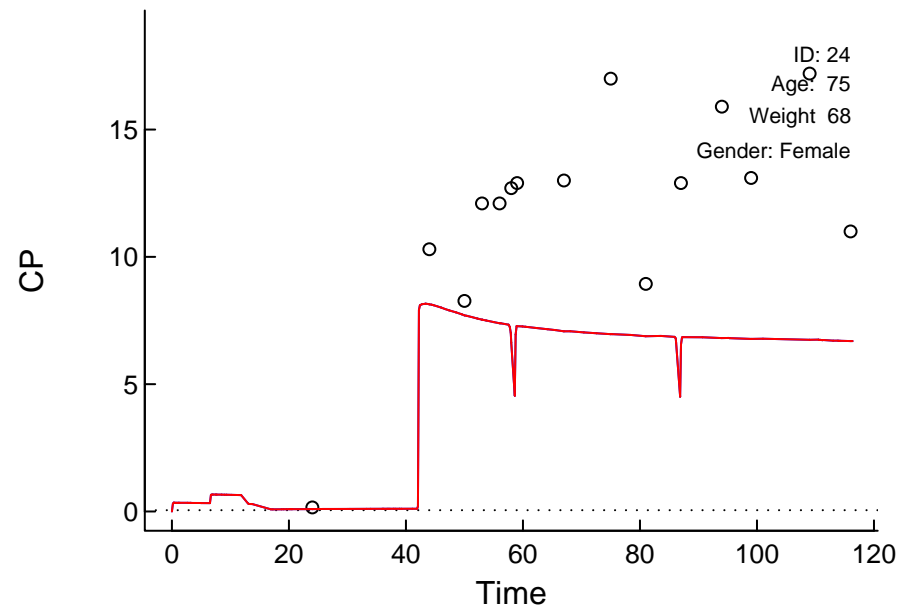
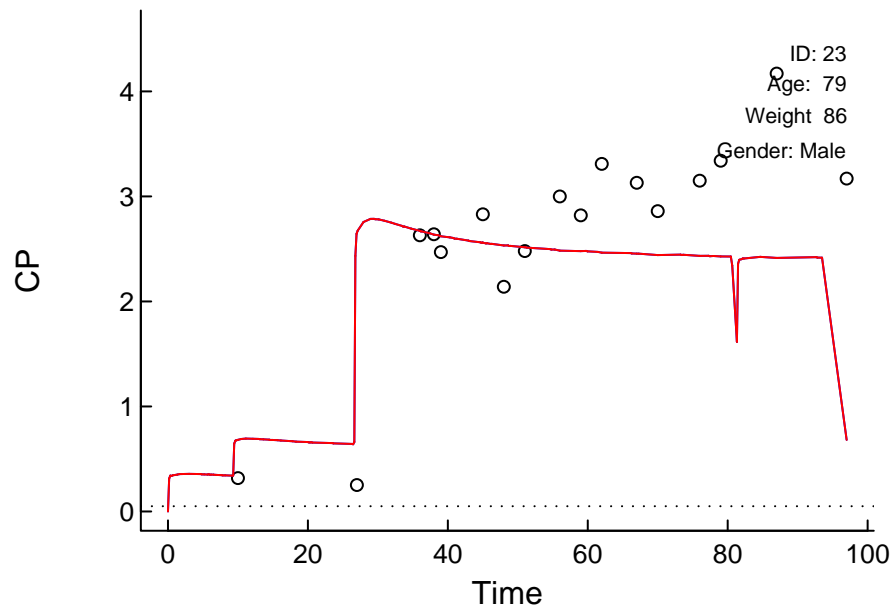
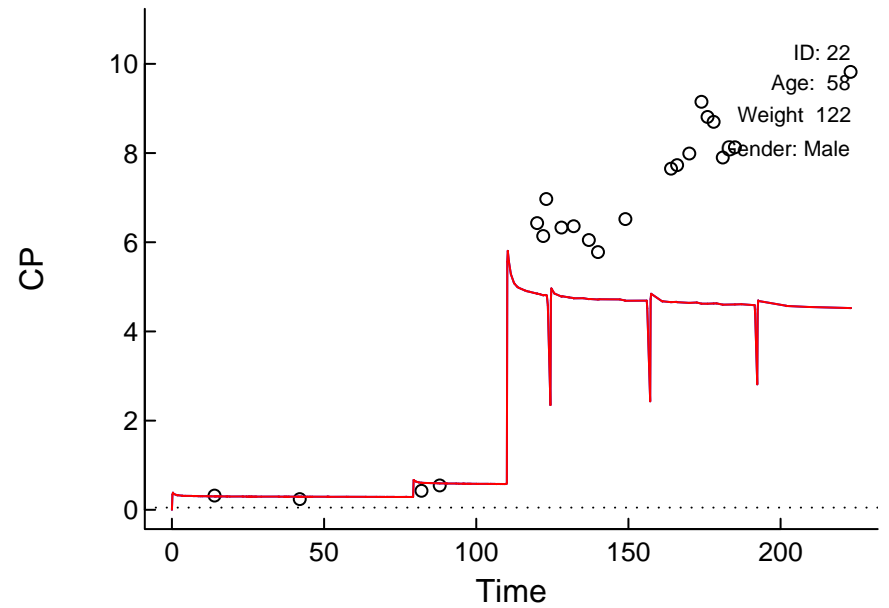
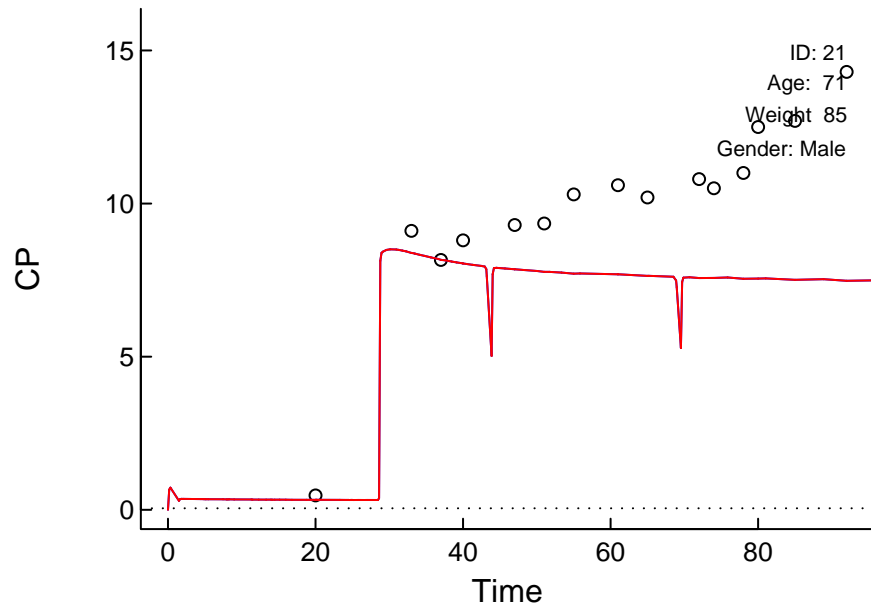
Circles: Observed; X: BQL; Red: Post Hoc; Blue: Population; Arrows: Doses; Dotted: LOQ



# "Control.Schnider.Simulation.txt" (24266.281)

Linear Scale

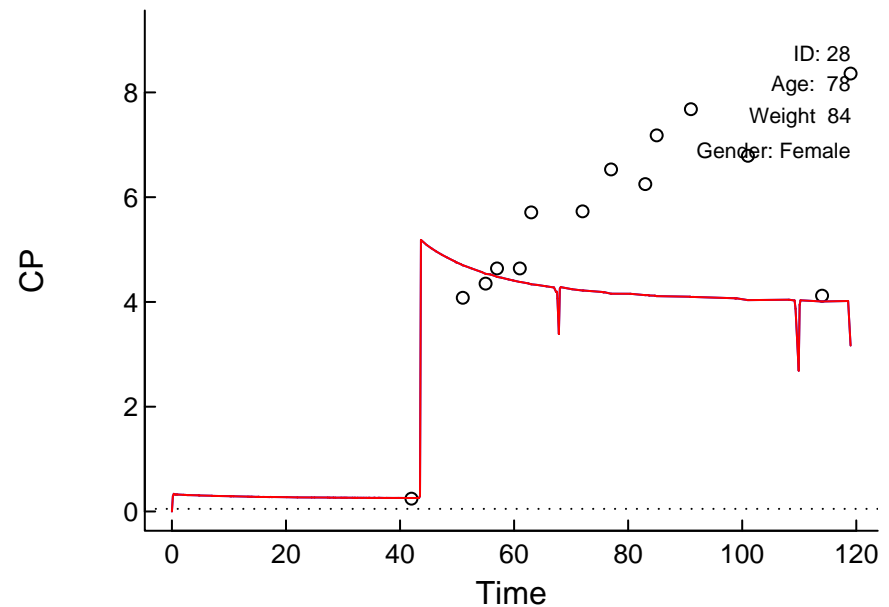
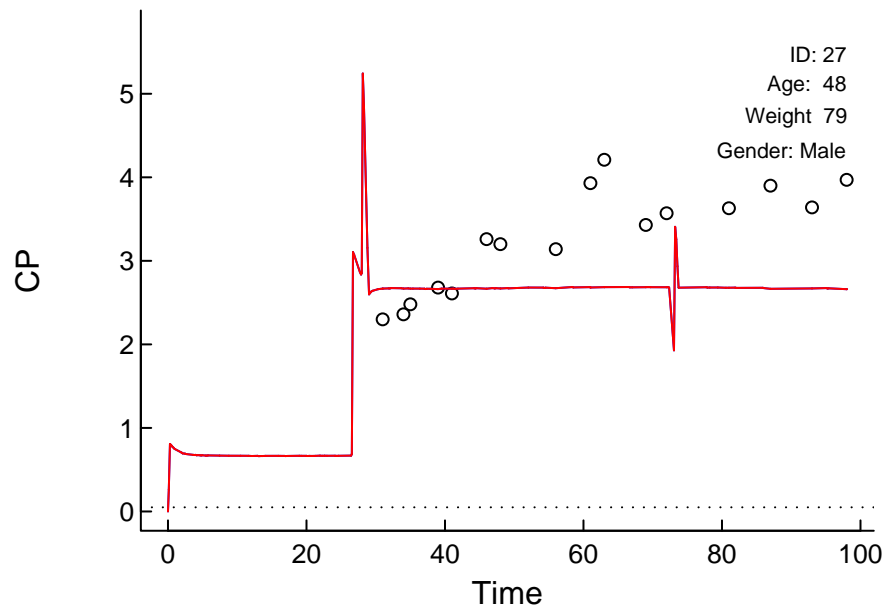
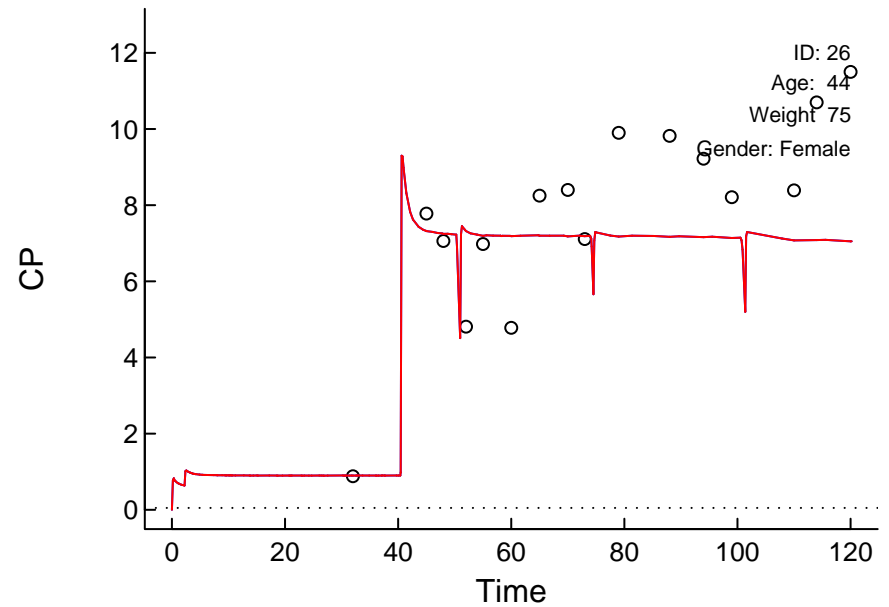
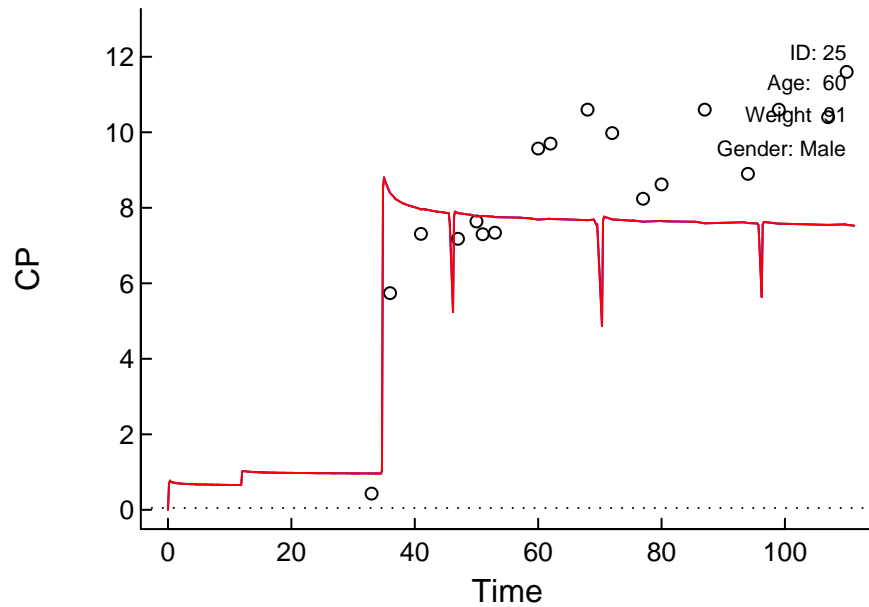
Circles: Observed; X: BQL; Red: Post Hoc; Blue: Population; Arrows: Doses; Dotted: LOQ



# "Control.Schnider.Simulation.txt" (24266.281)

Linear Scale

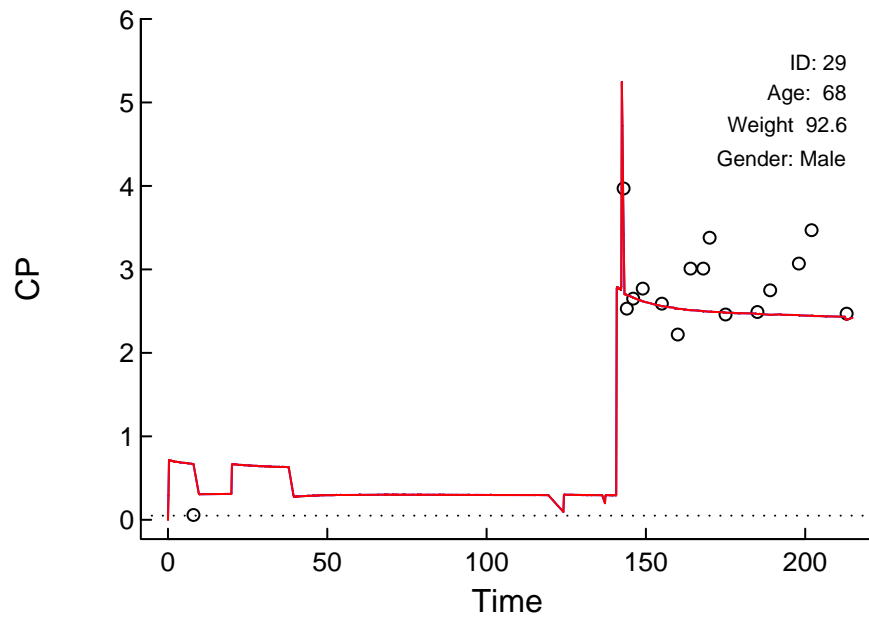
Circles: Observed; X: BQL; Red: Post Hoc; Blue: Population; Arrows: Doses; Dotted: LOQ



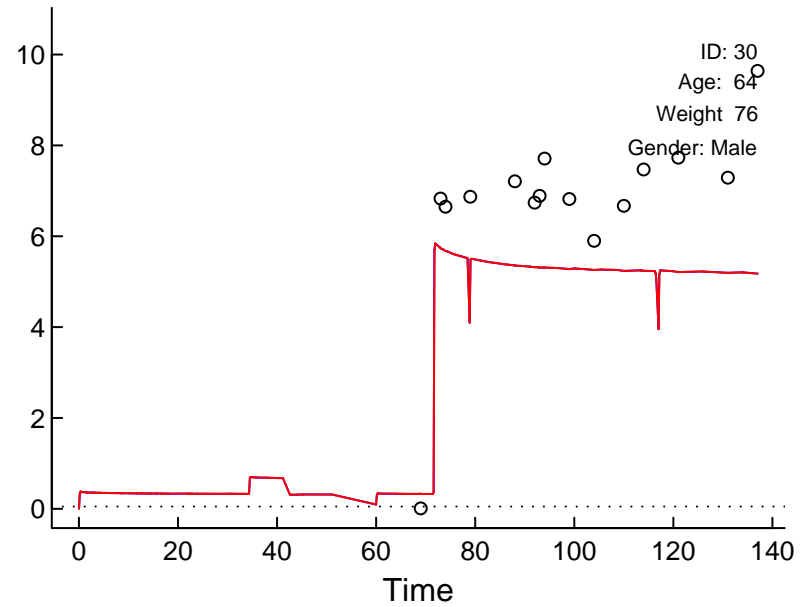
# "Control.Schnider.Simulation.txt" (24266.281)

Linear Scale

Circles: Observed; X: BQL; Red: Post Hoc; Blue: Population; Arrows: Doses; Dotted: LOQ



CP

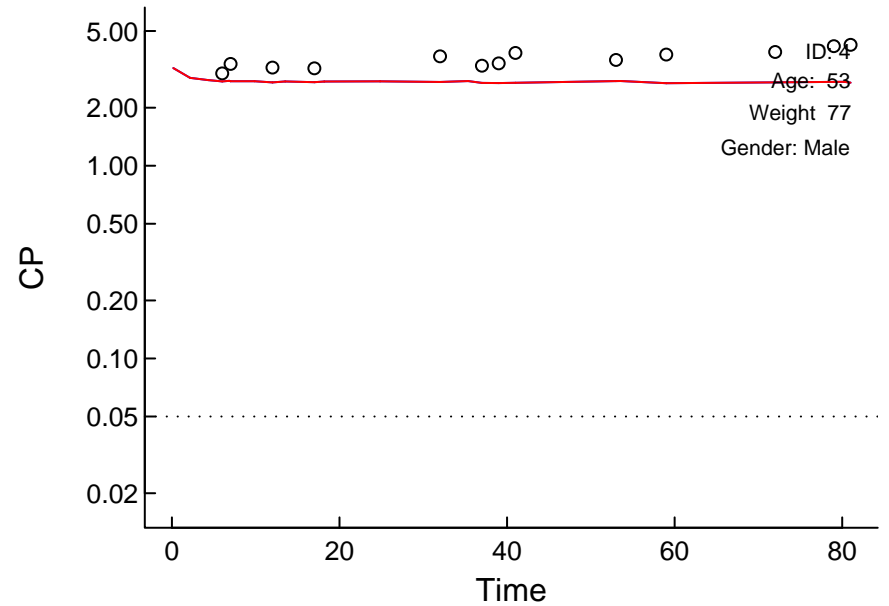
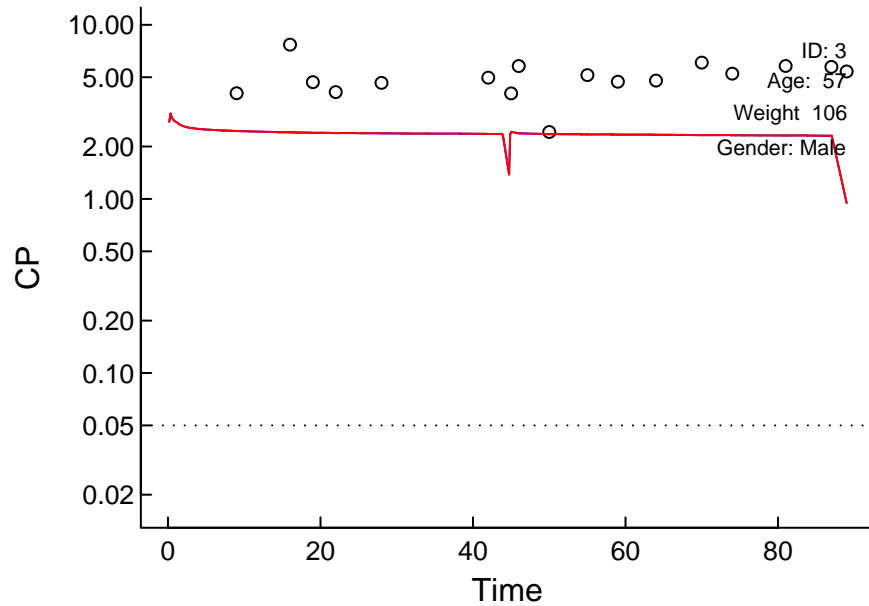
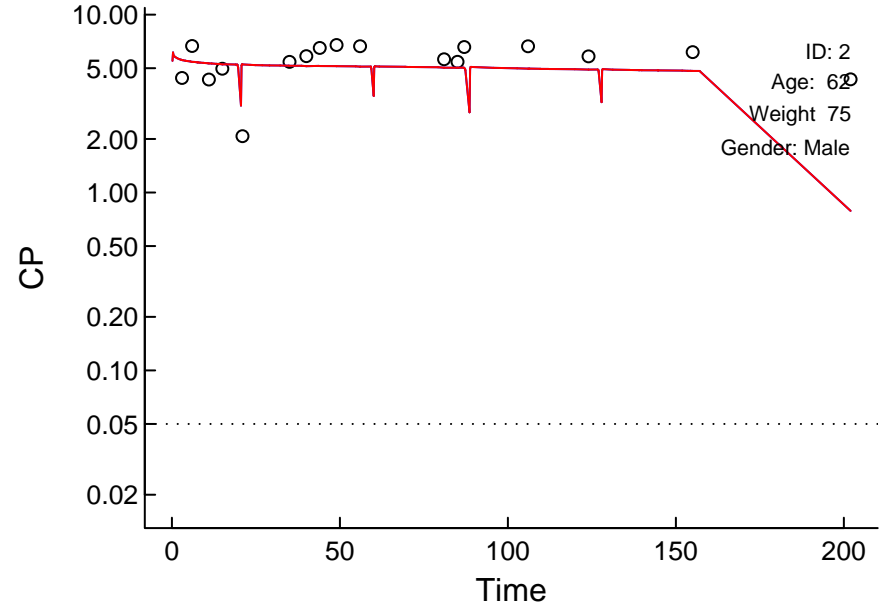
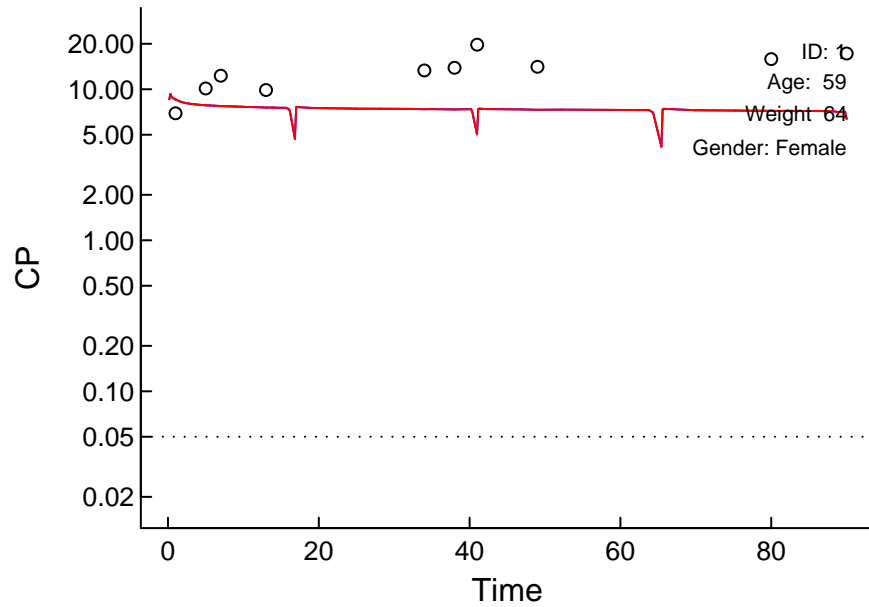




# "Control.Schnider.Simulation.txt" (24266.281)

Log Scale

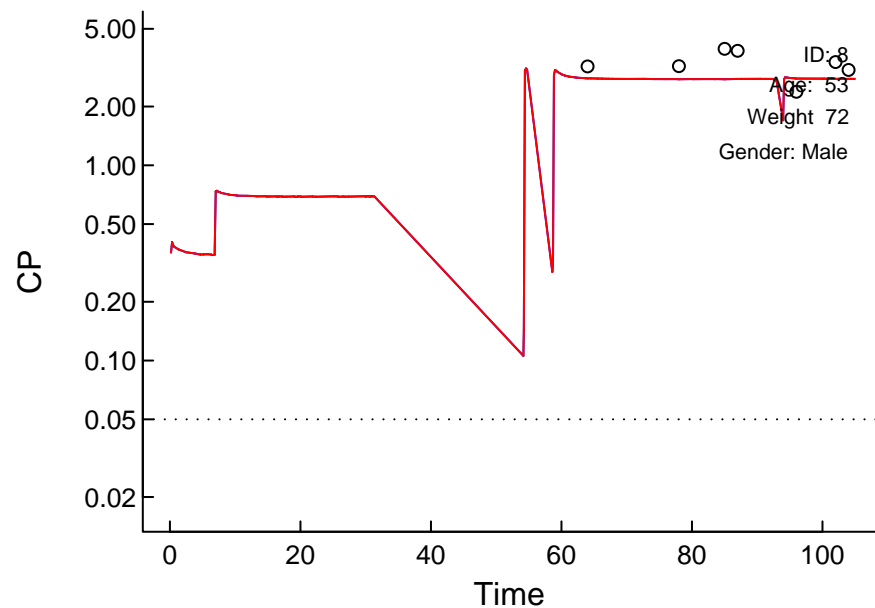
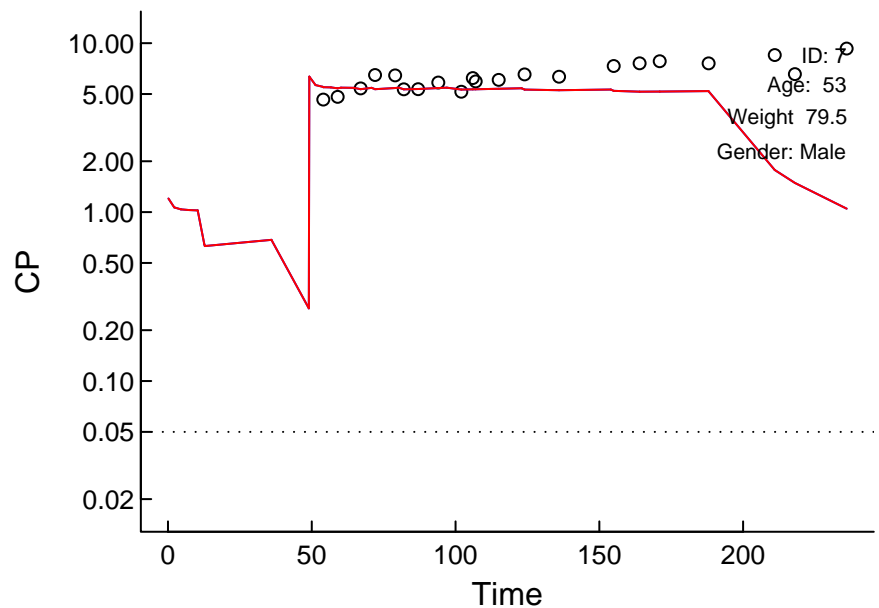
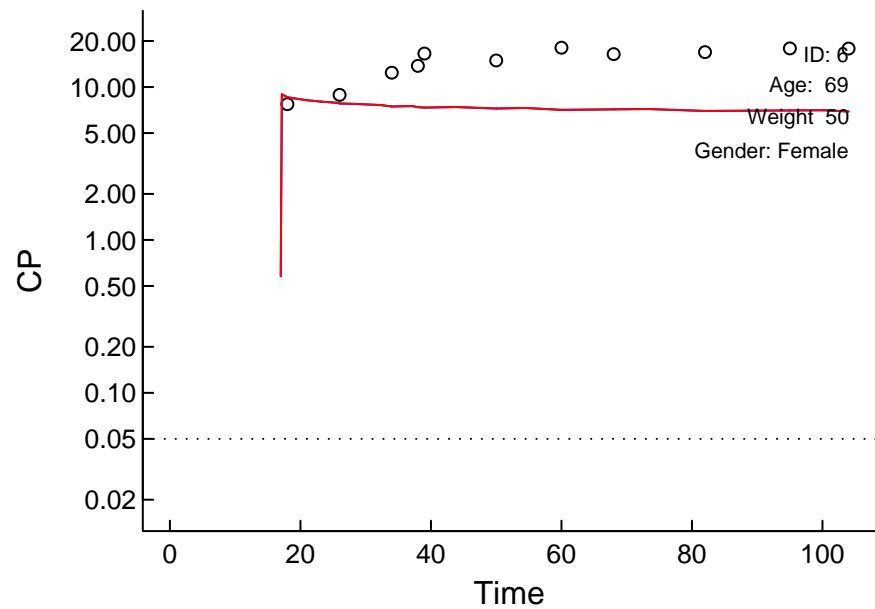
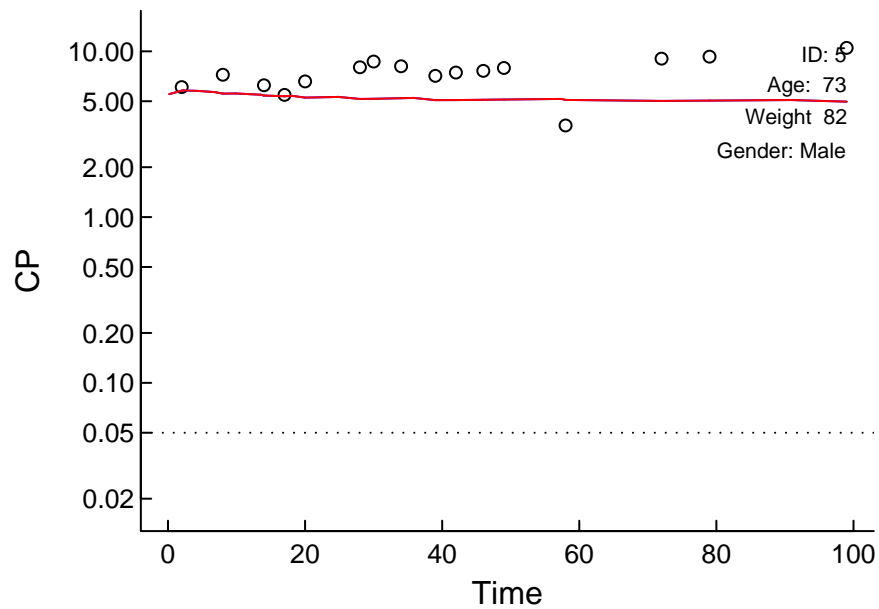
Circles: Observed; X: BQL; Red: Post Hoc; Blue: Population; Arrows: Doses; Dotted: LOQ



# "Control.Schnider.Simulation.txt" (24266.281)

Log Scale

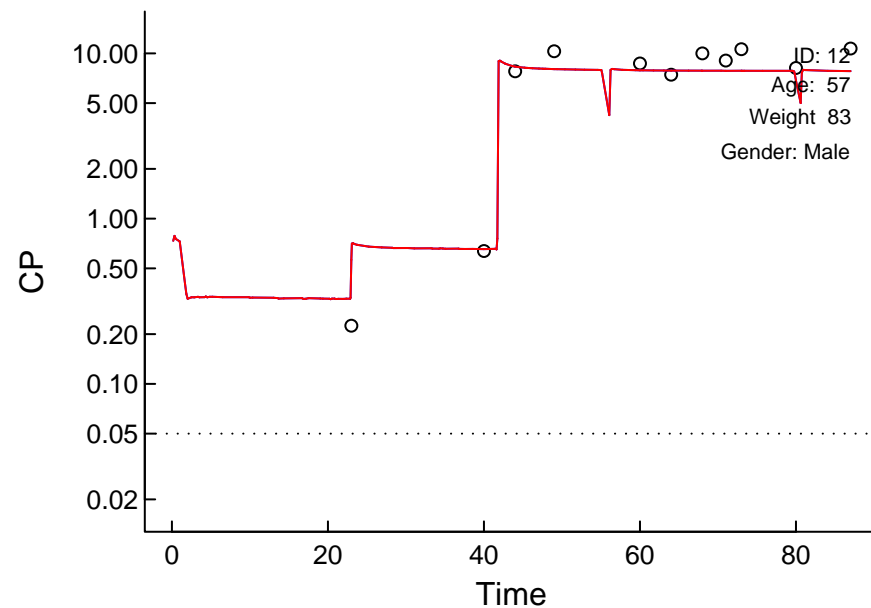
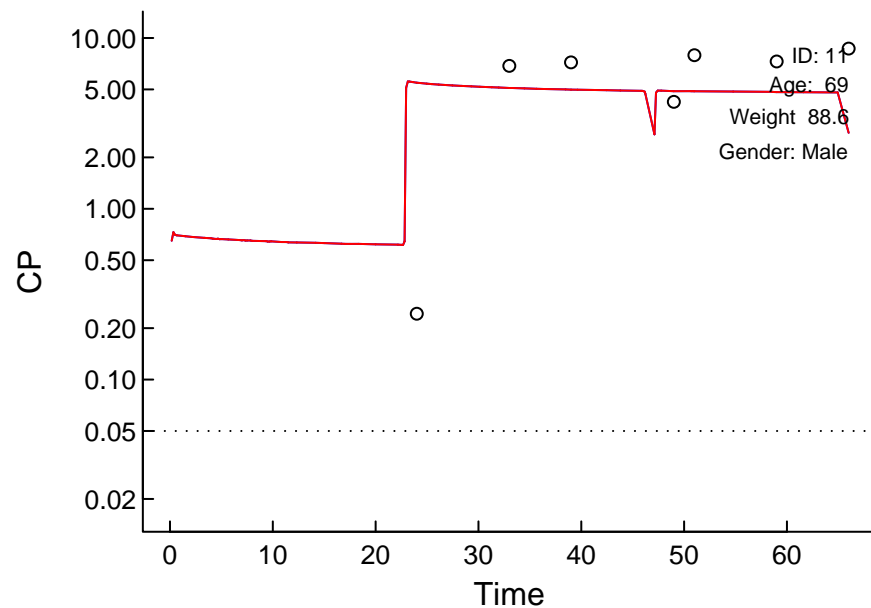
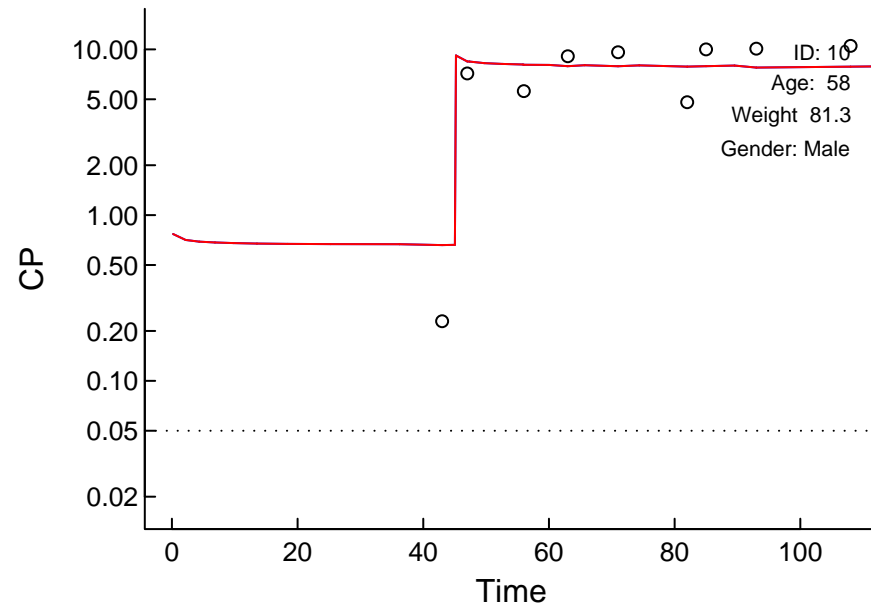
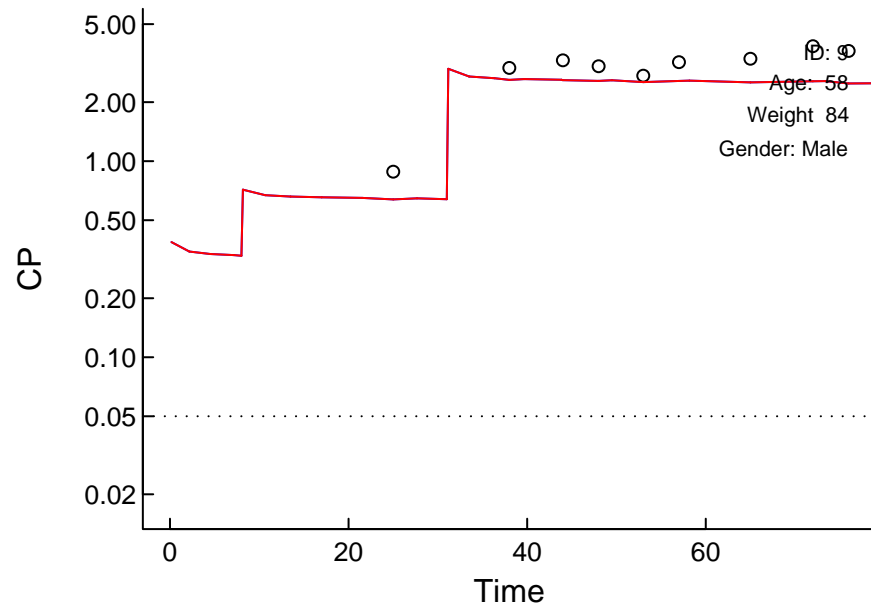
Circles: Observed; X: Post Hoc; Blue: Population; Arrows: Doses; Dotted: LOQ



# "Control.Schnider.Simulation.txt" (24266.281)

Log Scale

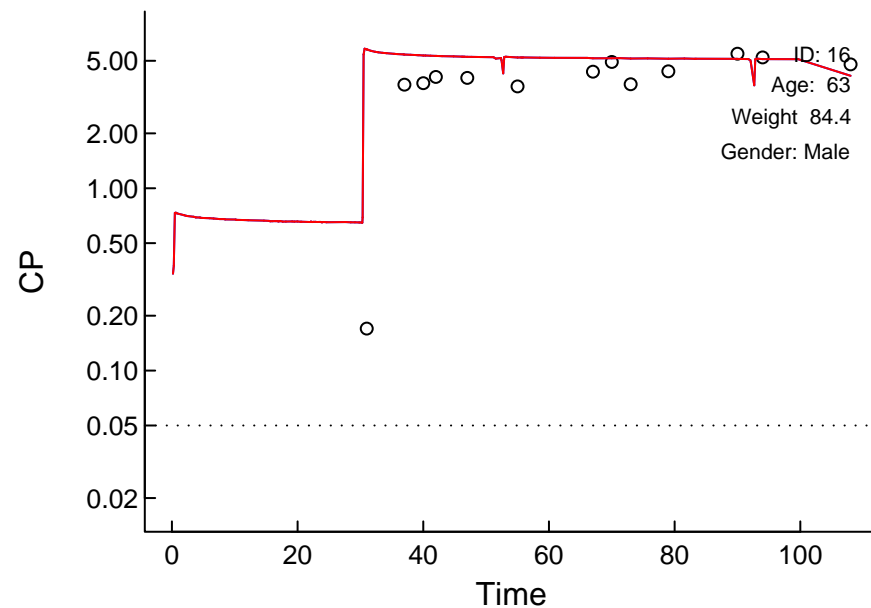
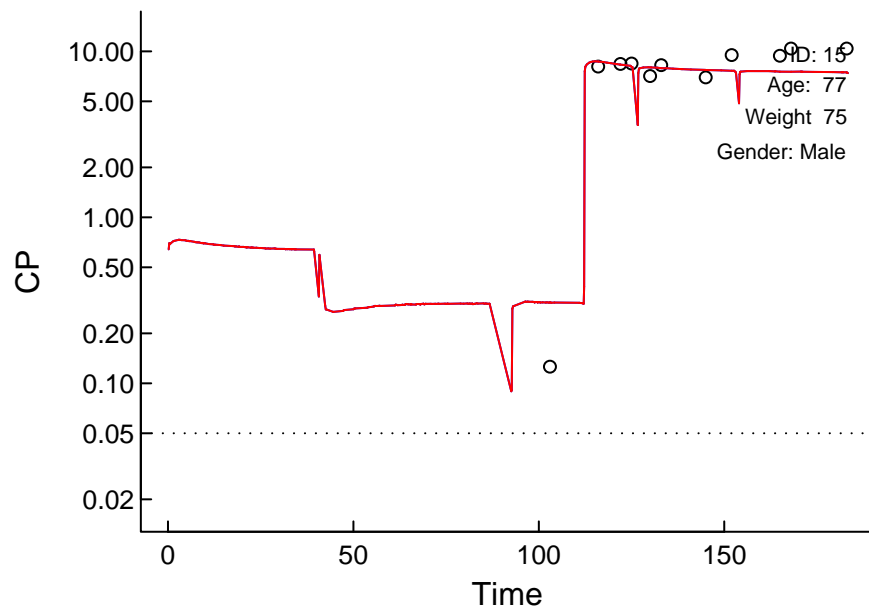
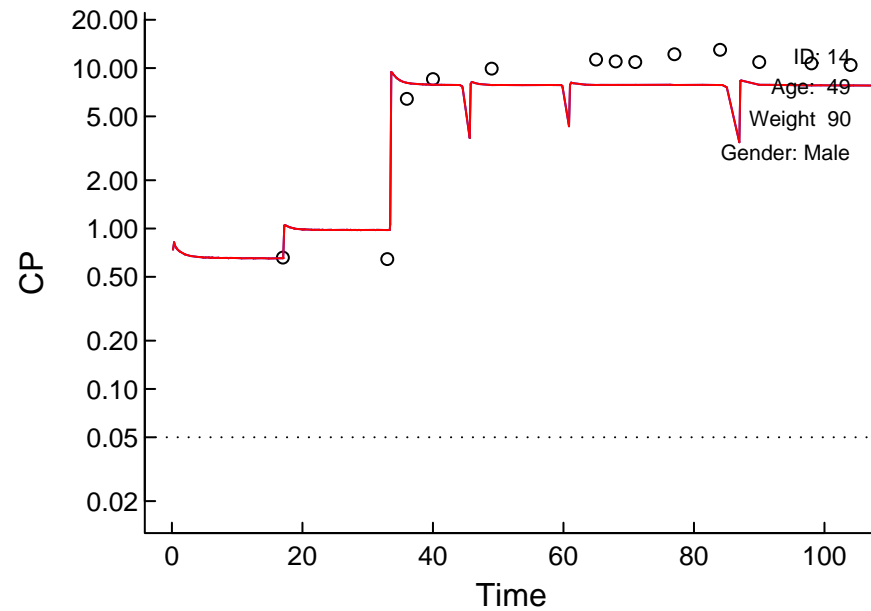
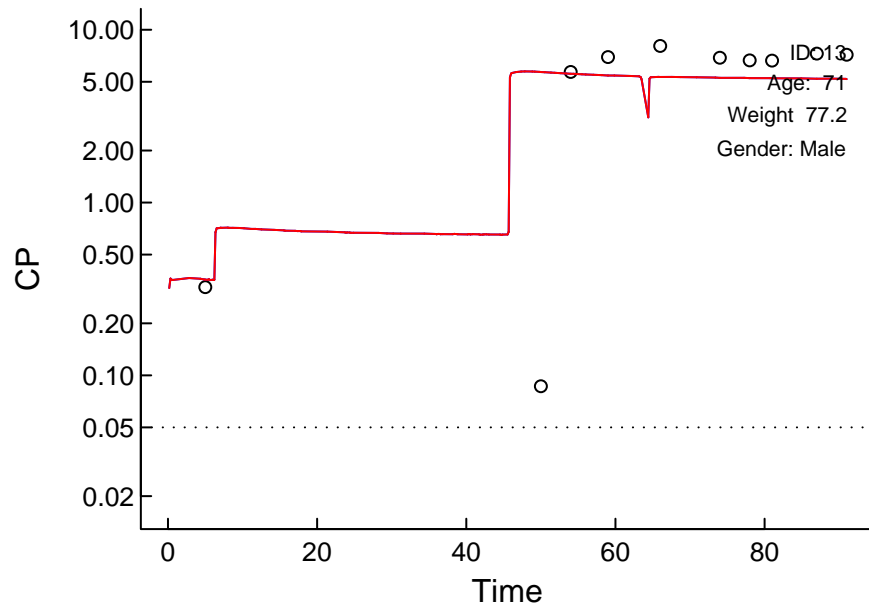
Circles: Observed; X: Post Hoc; Blue: Population; Arrows: Doses; Dotted: LOQ



# "Control.Schnider.Simulation.txt" (24266.281)

Log Scale

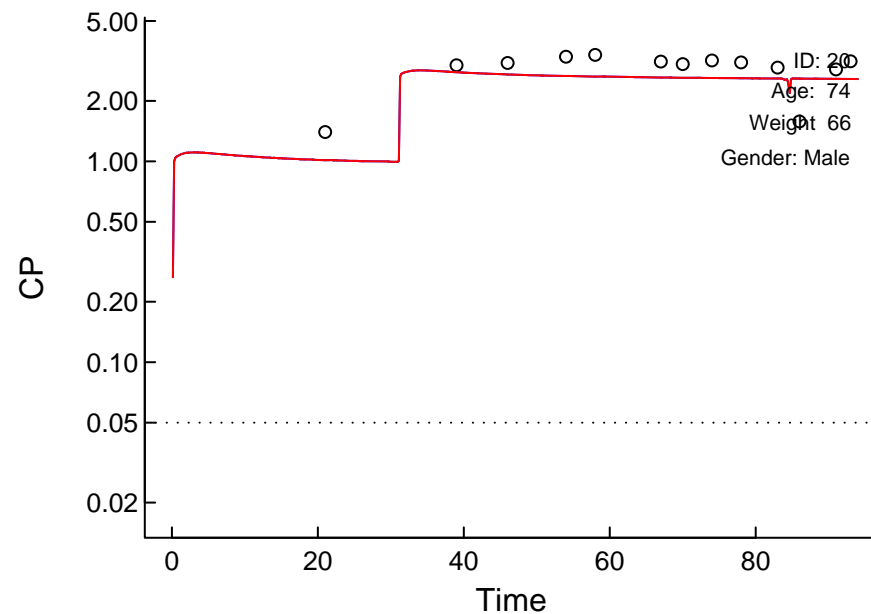
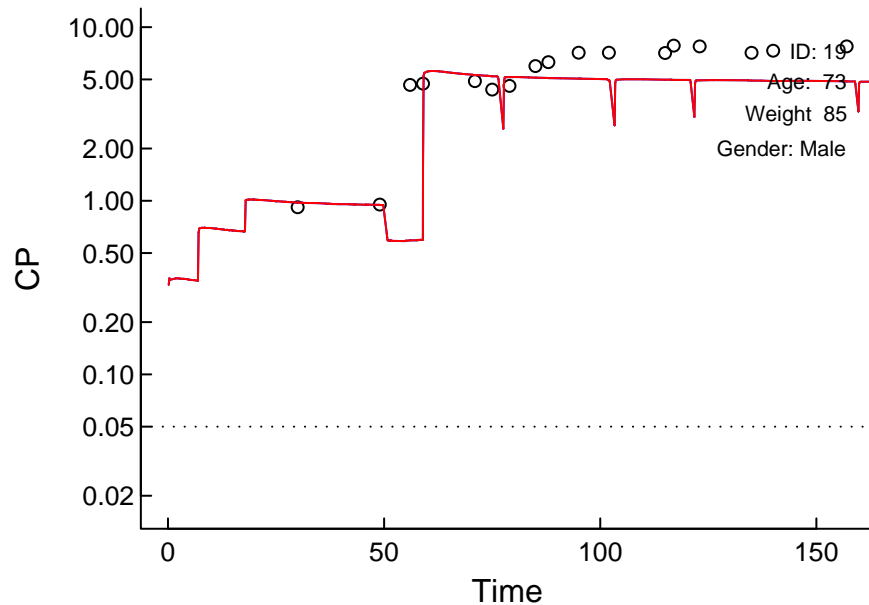
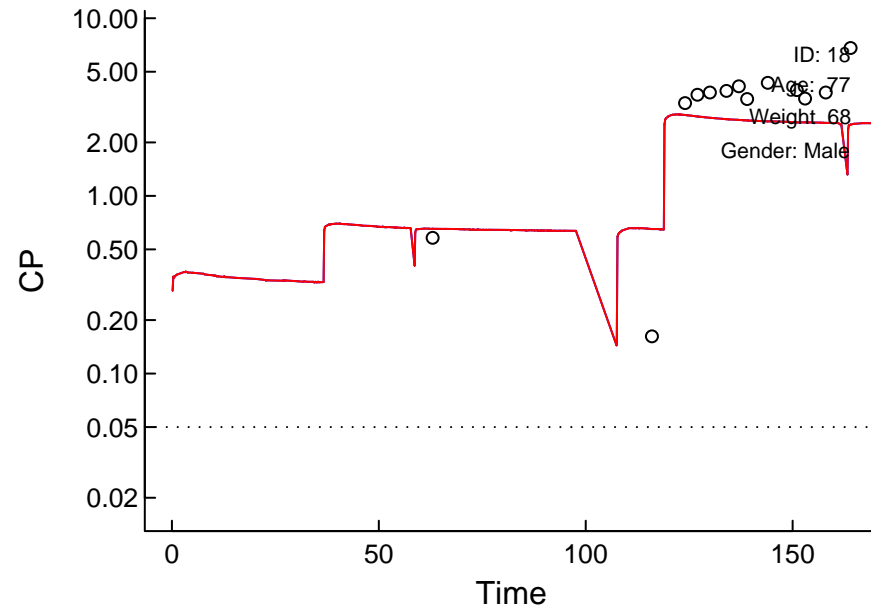
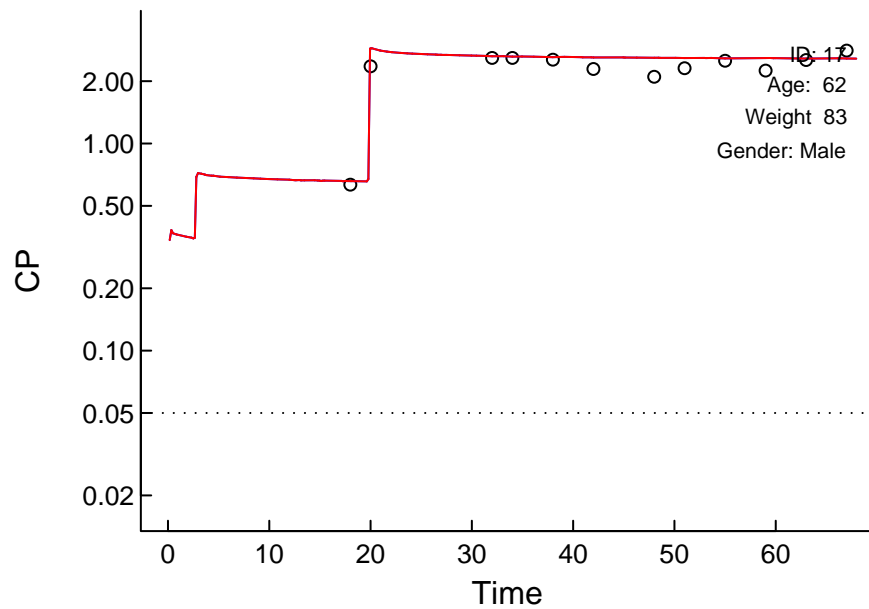
Circles: Observed; X: Post Hoc; Blue: Population; Arrows: Doses; Dotted: LOQ



# "Control.Schnider.Simulation.txt" (24266.281)

Log Scale

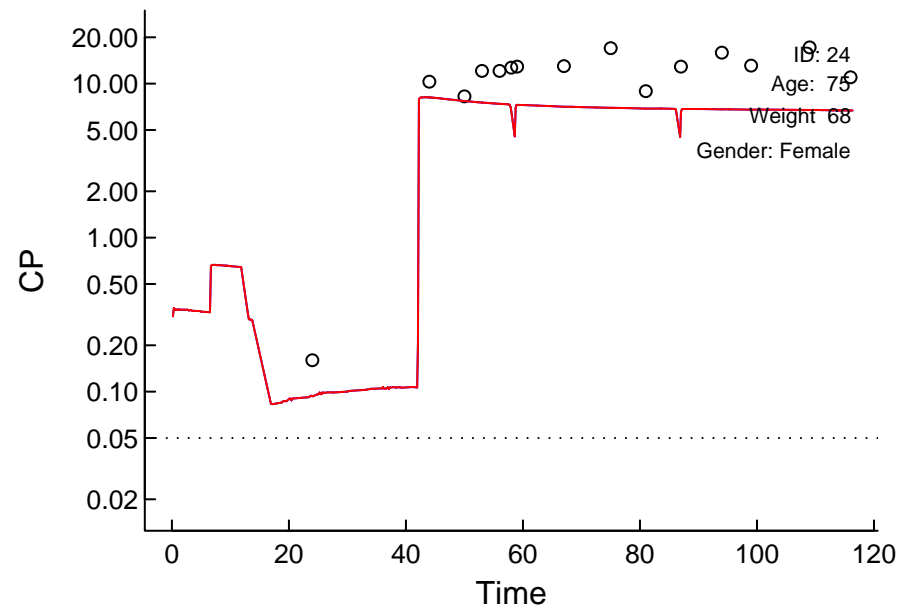
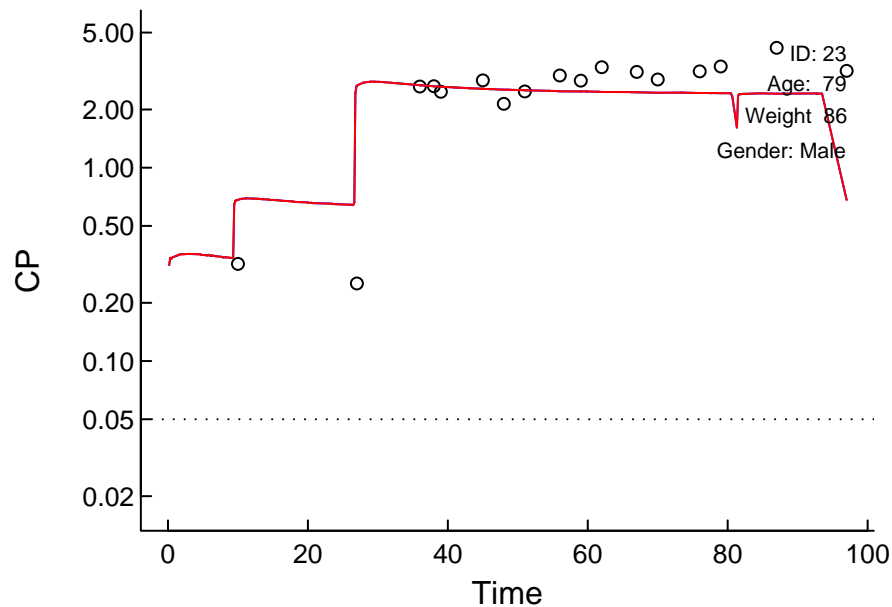
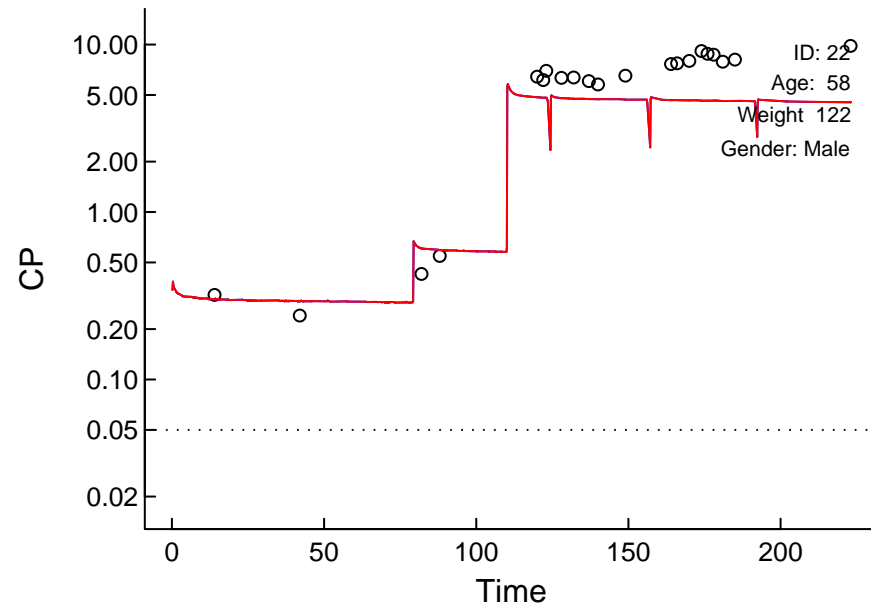
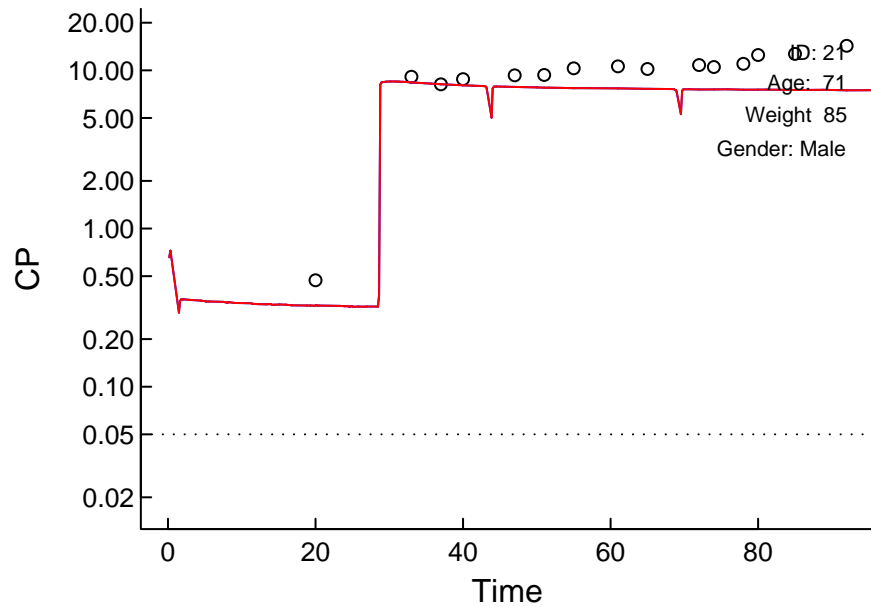
Circles: Observed; X: BQL; Red: Post Hoc; Blue: Population; Arrows: Doses; Dotted: LOQ



# "Control.Schnider.Simulation.txt" (24266.281)

Log Scale

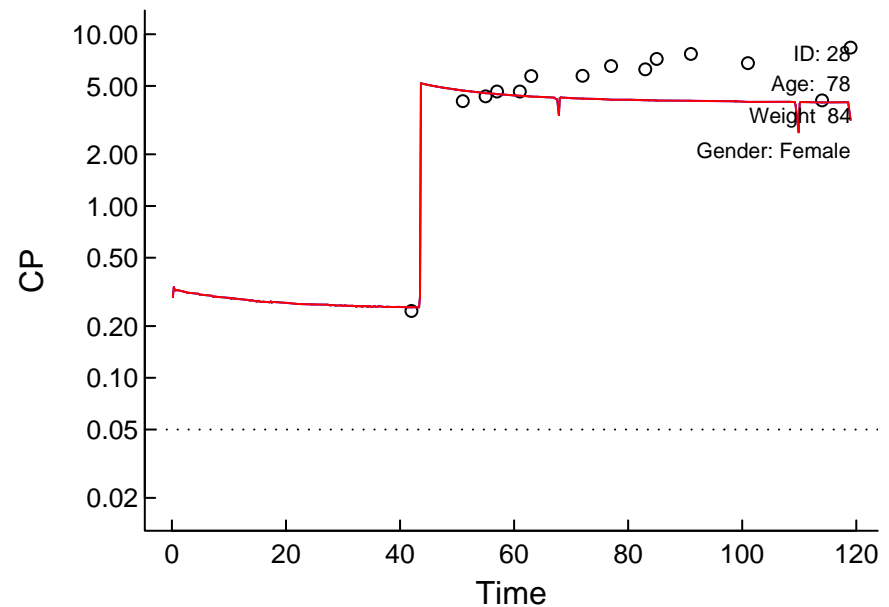
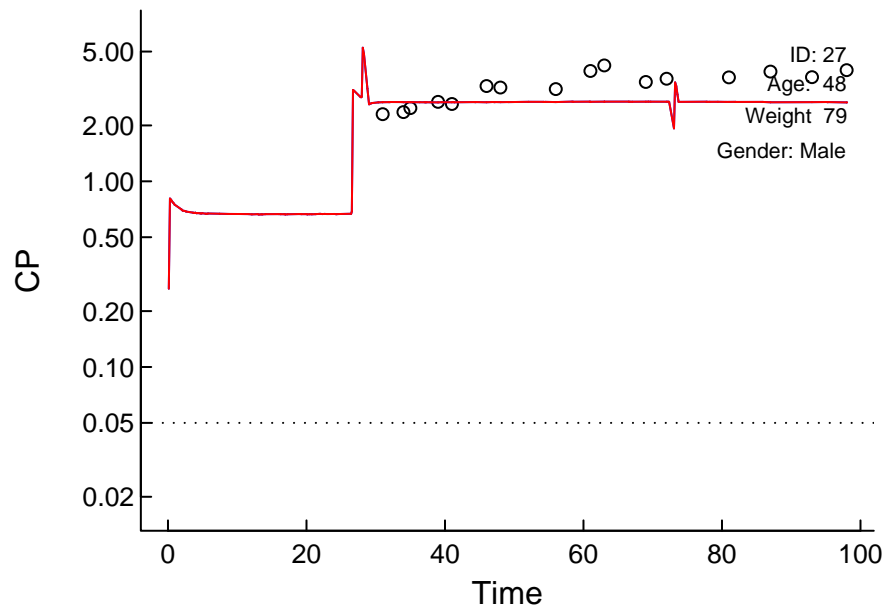
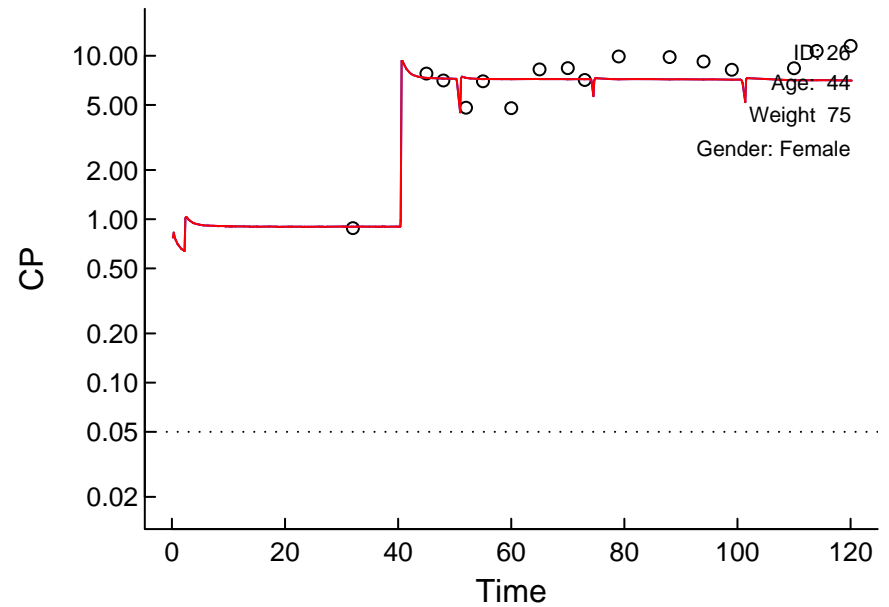
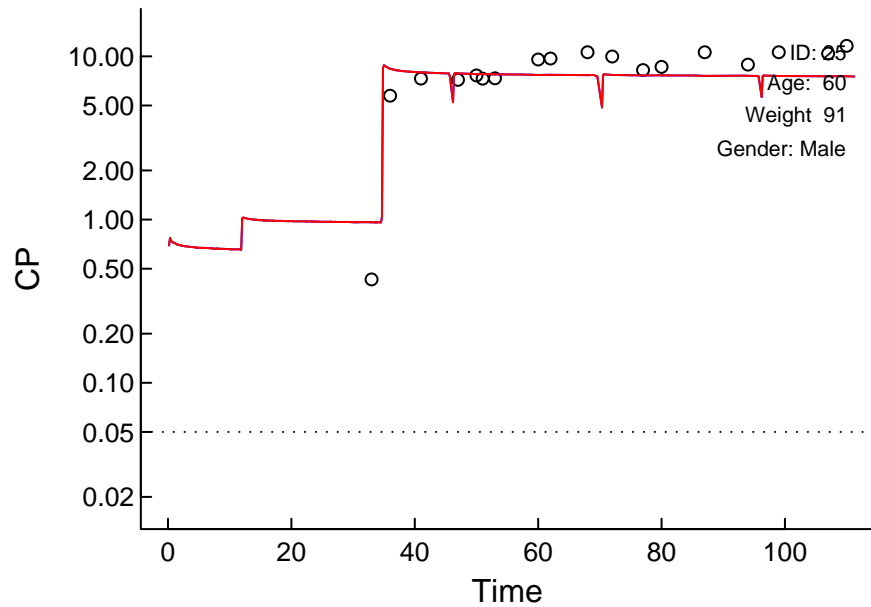
Circles: Observed; X: BQL; Red: Post Hoc; Blue: Population; Arrows: Doses; Dotted: LOQ



# "Control.Schnider.Simulation.txt" (24266.281)

Log Scale

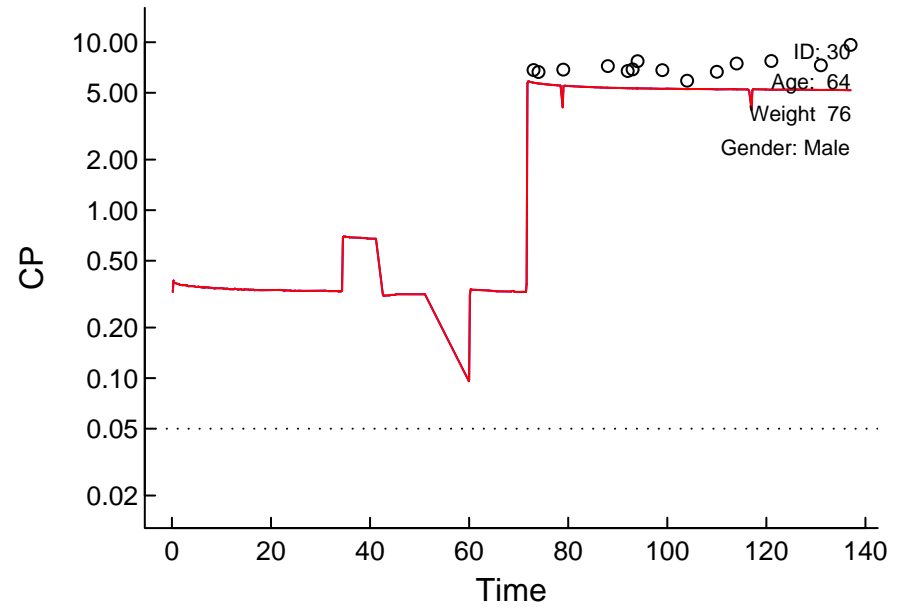
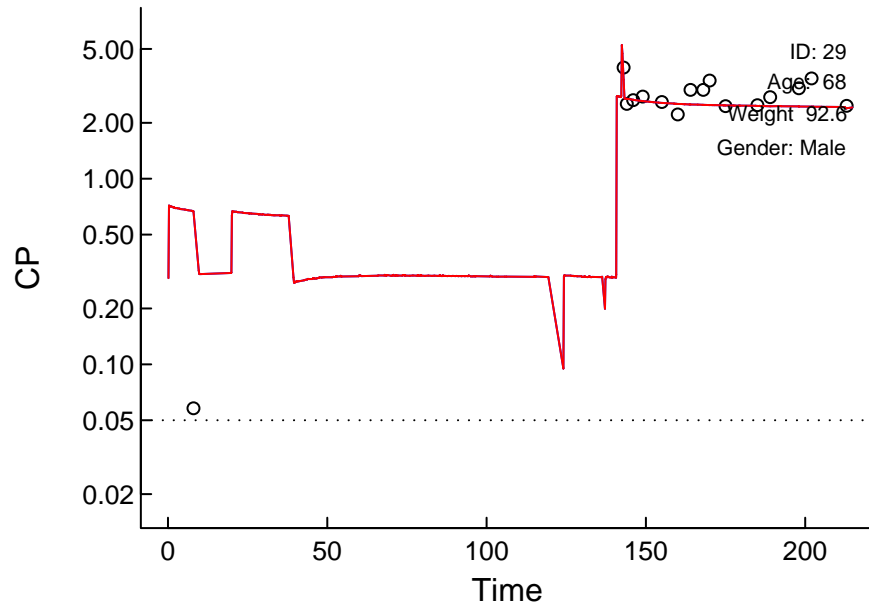
Circles: Observed; X: BQL; Red: Post Hoc; Blue: Population; Arrows: Doses; Dotted: LOQ



# "Control.Schnider.Simulation.txt" (24266.281)

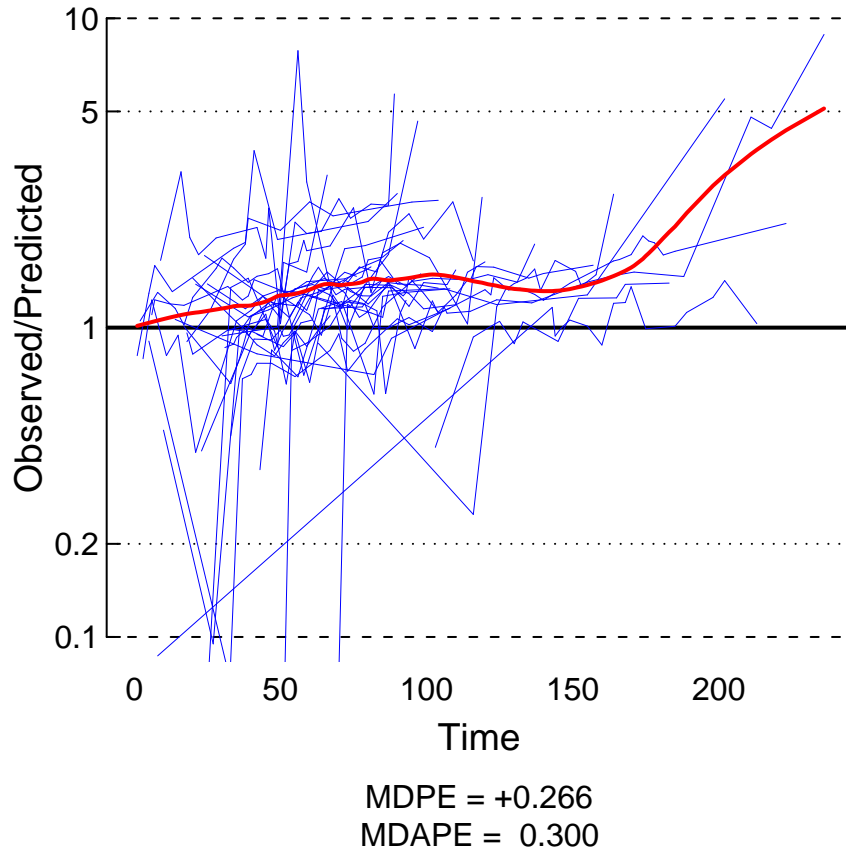
Log Scale

Circles: Observed; X: BQL; Red: Post Hoc; Blue: Population; Arrows: Doses; Dotted: LOQ

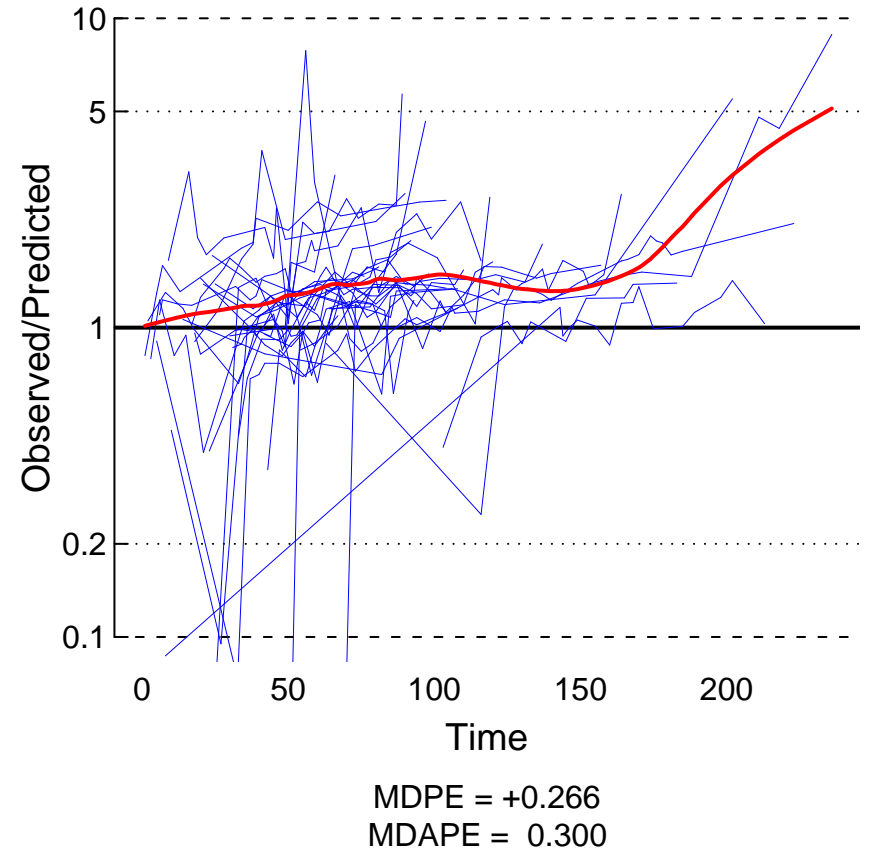




Population



Post Hoc

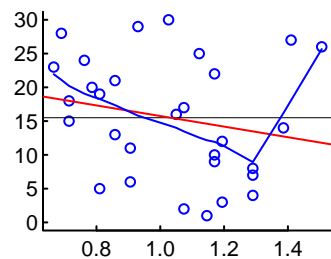
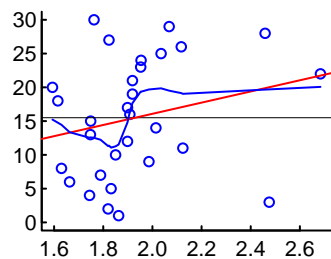
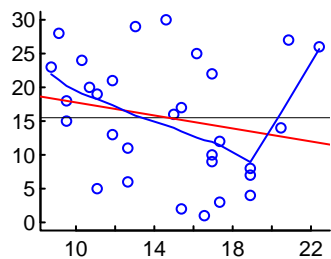
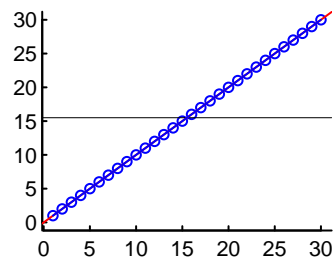


# "Control.Schneider.Simulation.txt" (24266.281)

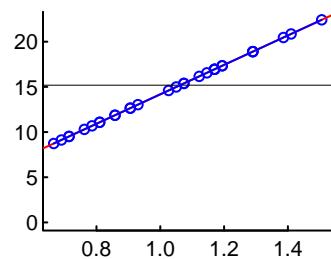
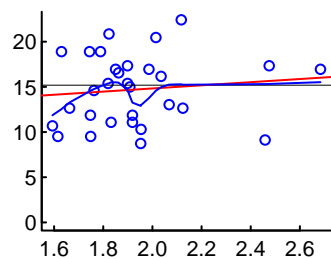
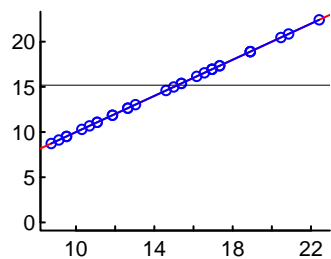
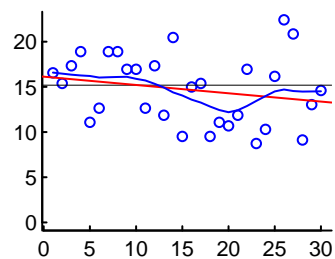
## Post Hoc Value vs. Covariates

For categorical covariates, P values compare that value to all other values by t test  
 Red: linear regression; Blue: smoother; Black: median; r and P values: linear regression

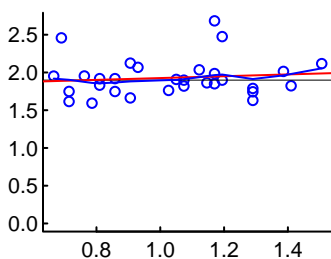
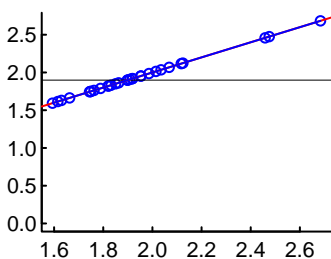
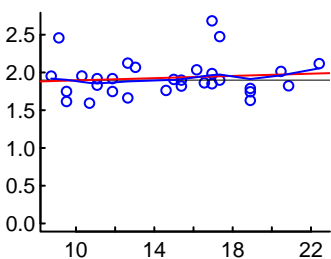
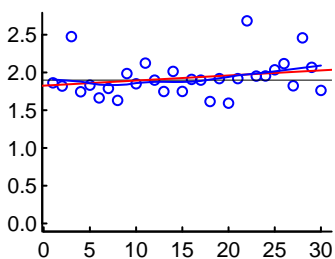
ID



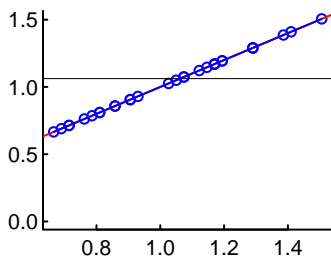
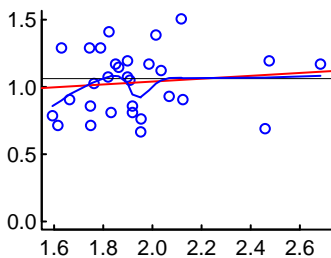
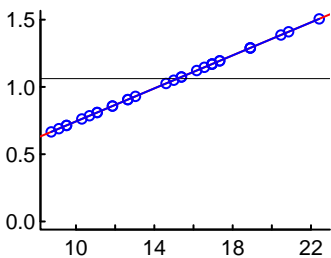
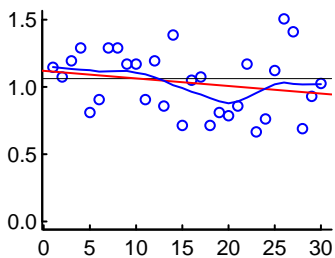
V2



CL1



CL2



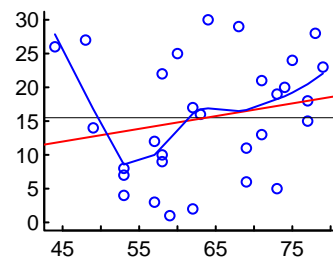
ID

V2

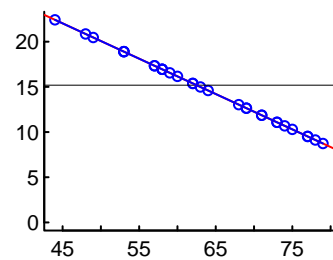
CL1

CL2

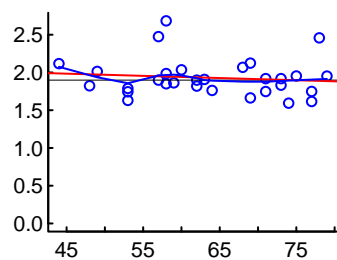
ID



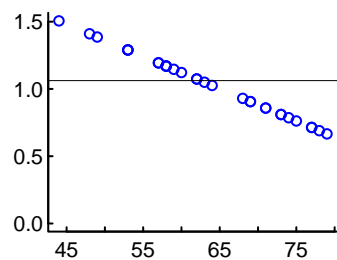
V2



CL1



CL2



Age (years)