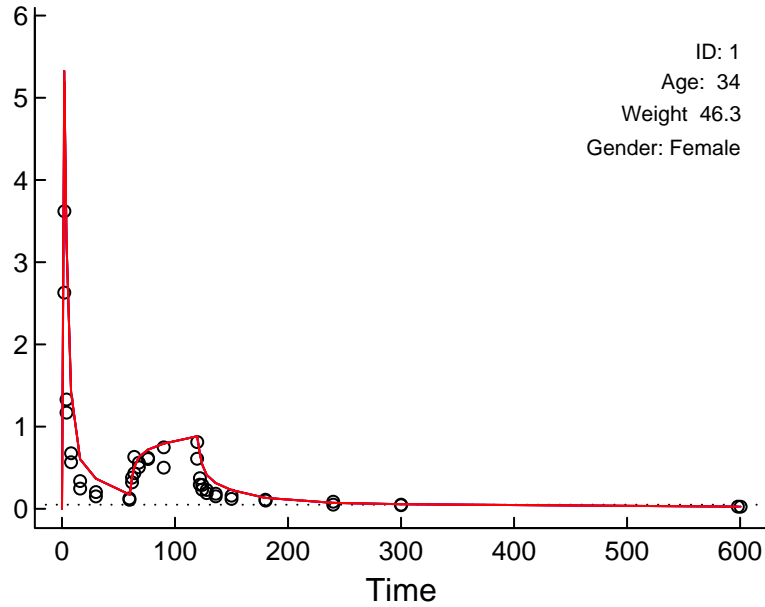


"Control.Marsh.Simulation.txt" (8664.613)

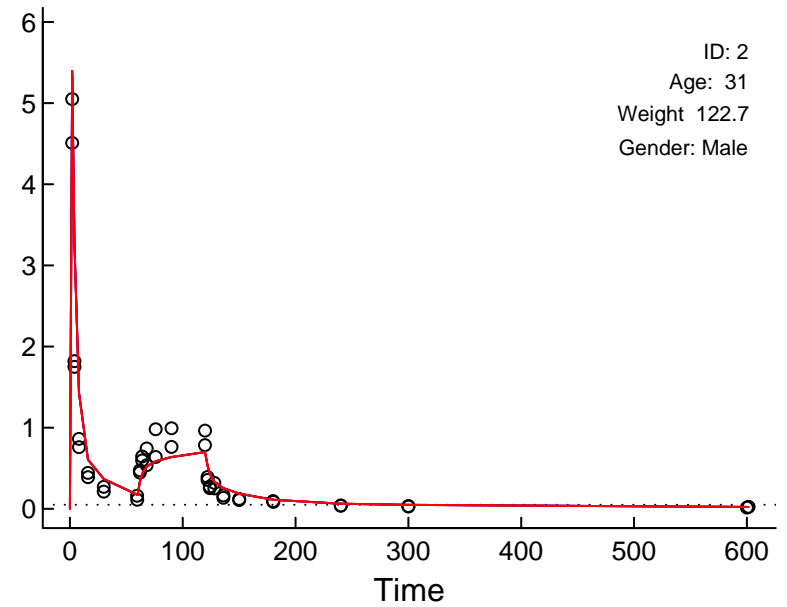
Linear Scale

Circles: Observed; X: BQL; Red: Post Hoc; Blue: Population; Arrows: Doses; Dotted: LOQ

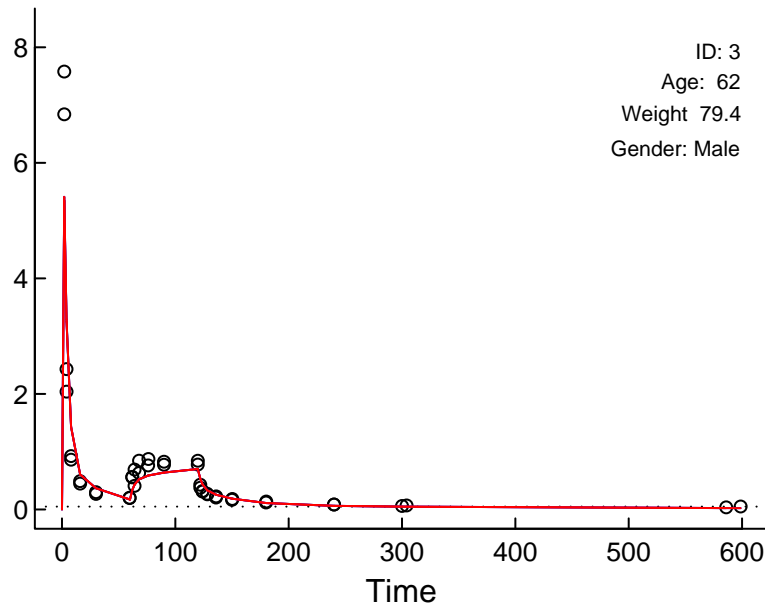
CP



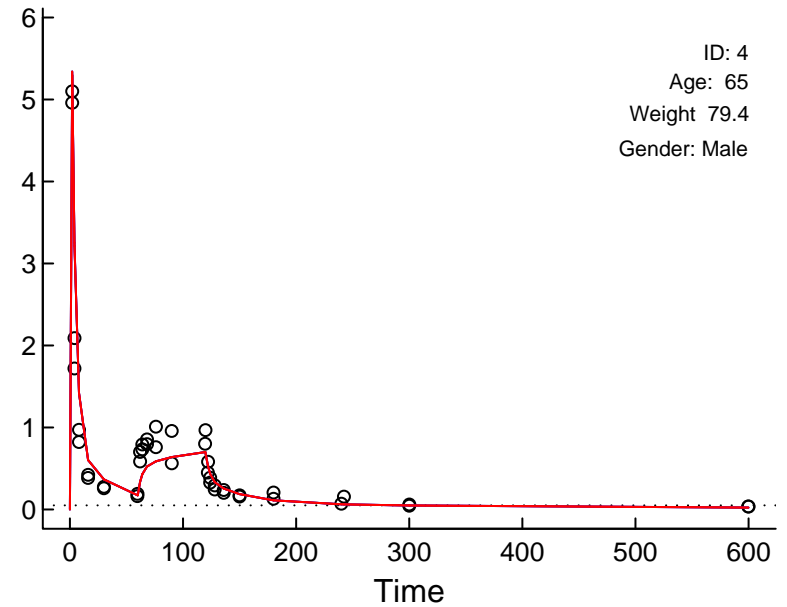
CP



CP



CP

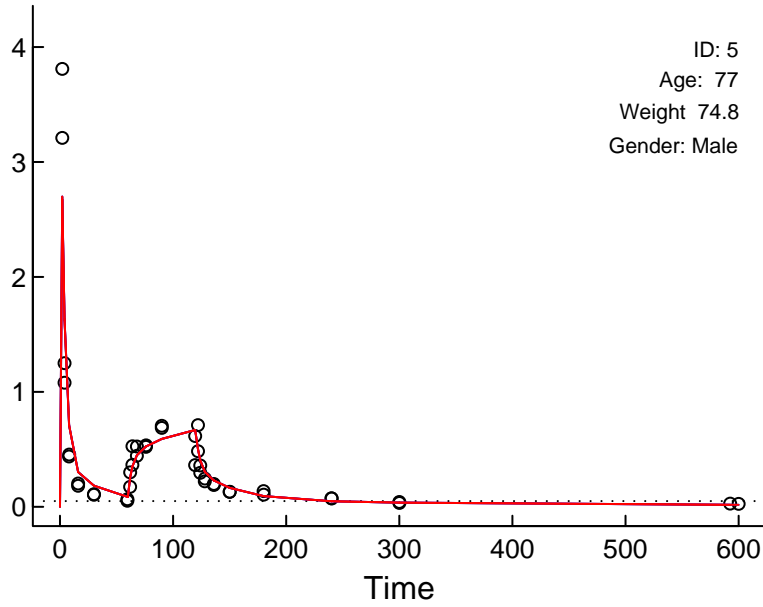


"Control.Marsh.Simulation.txt" (8664.613)

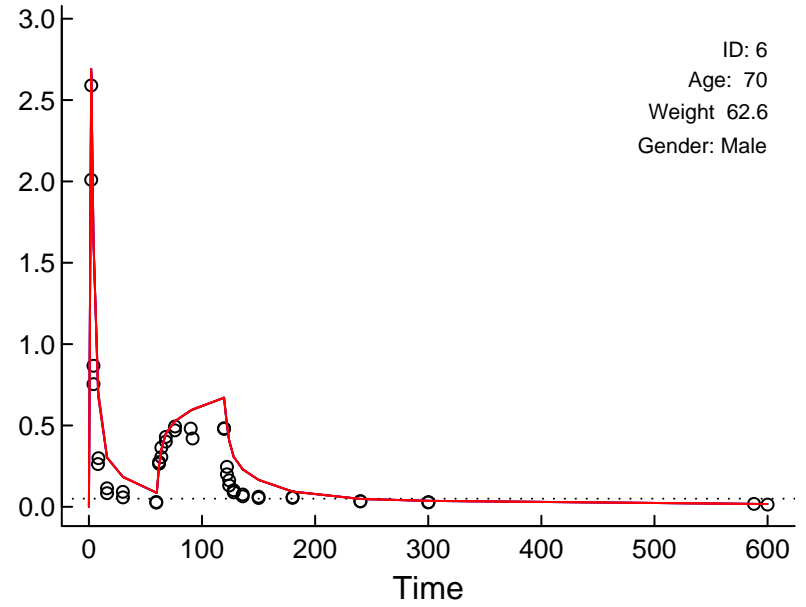
Linear Scale

Circles: Observed; X: BQL; Red: Post Hoc; Blue: Population; Arrows: Doses; Dotted: LOQ

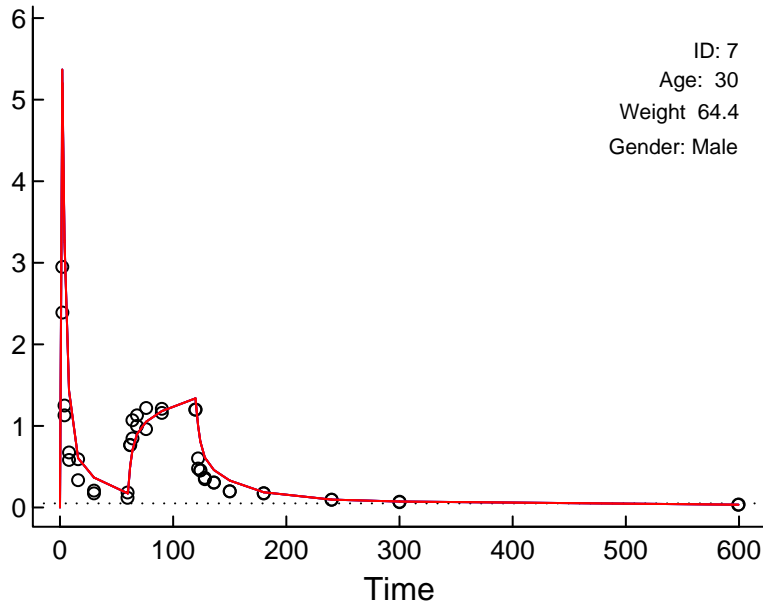
CP



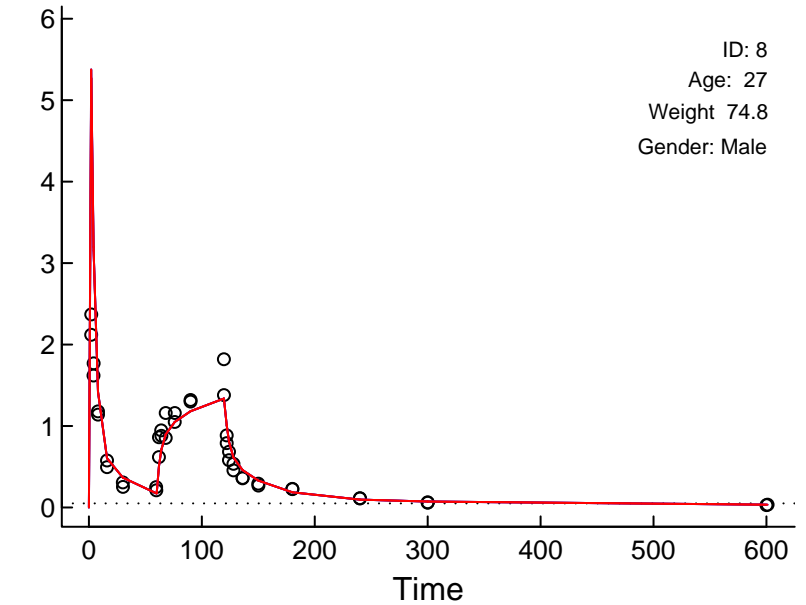
CP



CP



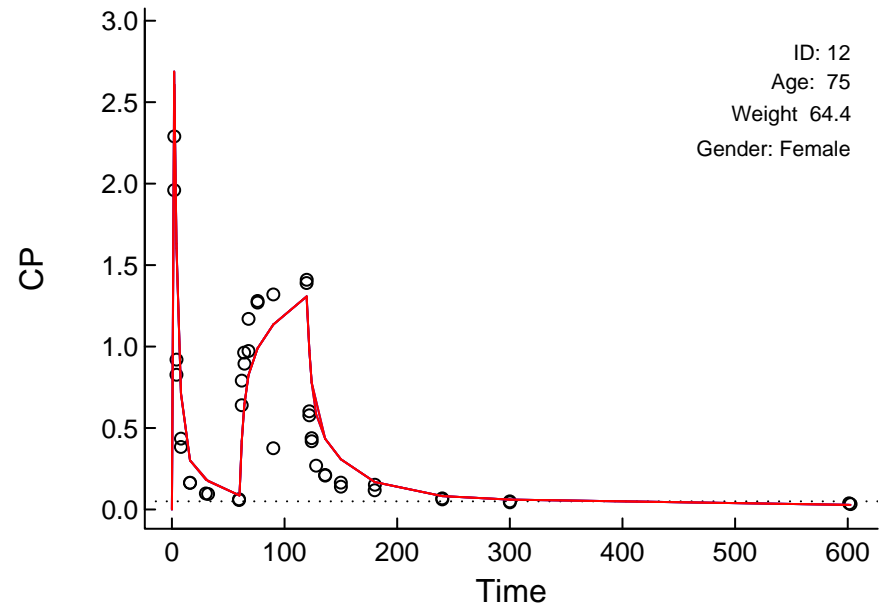
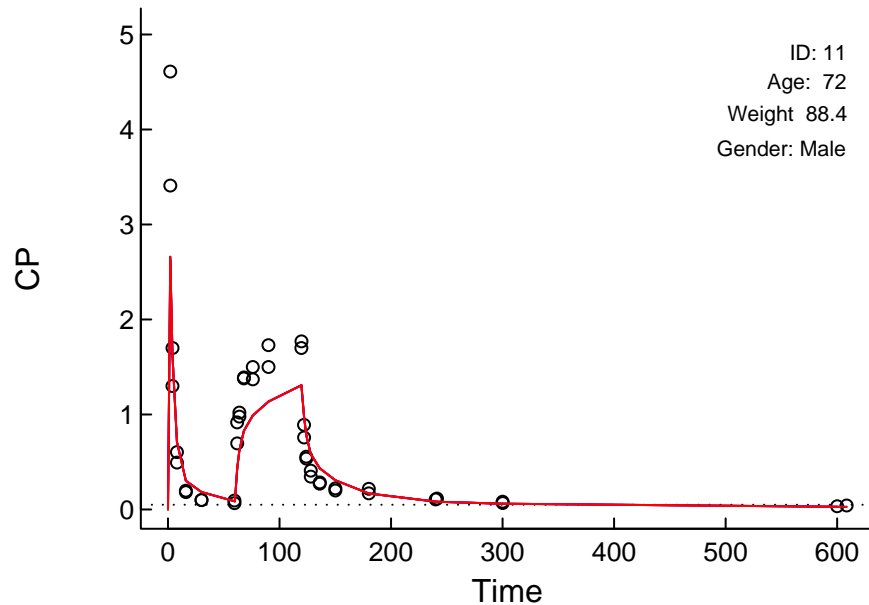
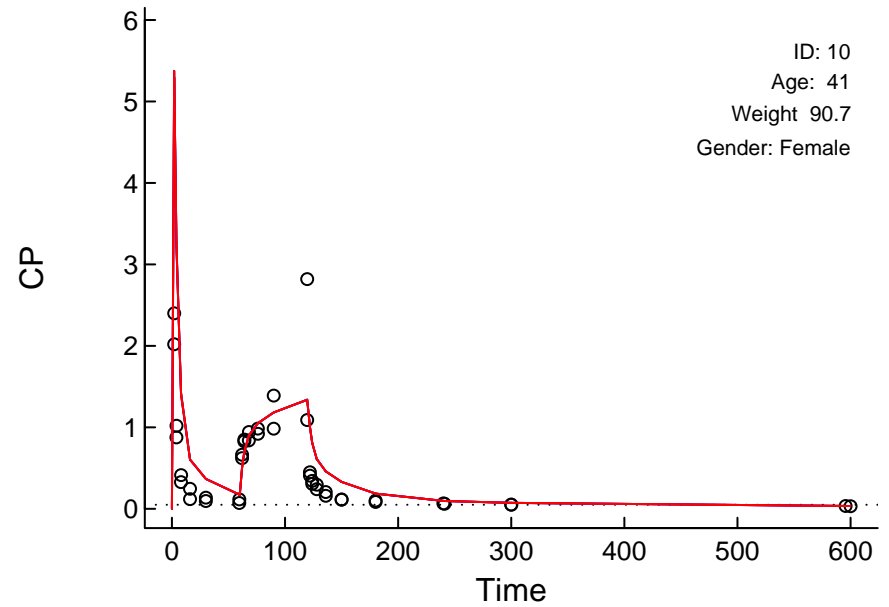
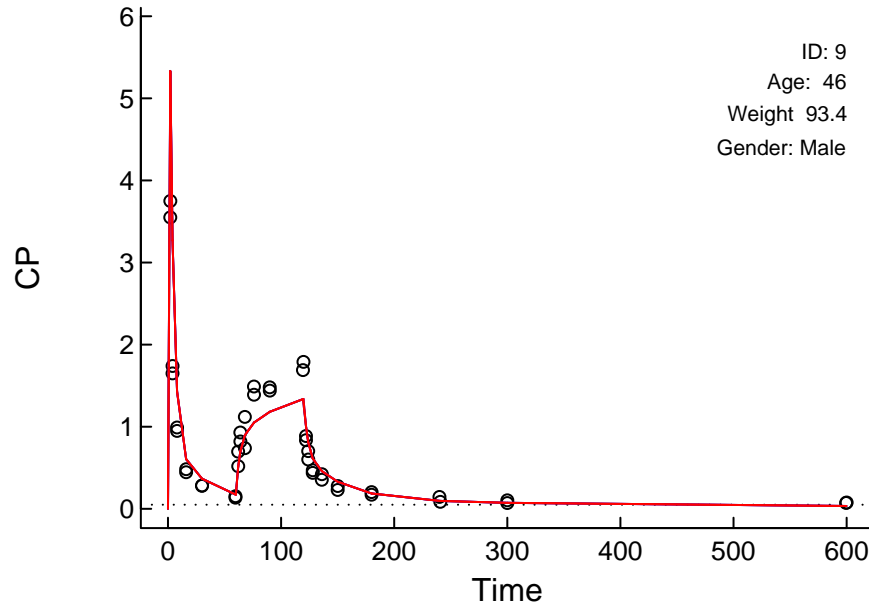
CP



"Control.Marsh.Simulation.txt" (8664.613)

Linear Scale

Circles: Observed; X: BQL; Red: Post Hoc; Blue: Population; Arrows: Doses; Dotted: LOQ

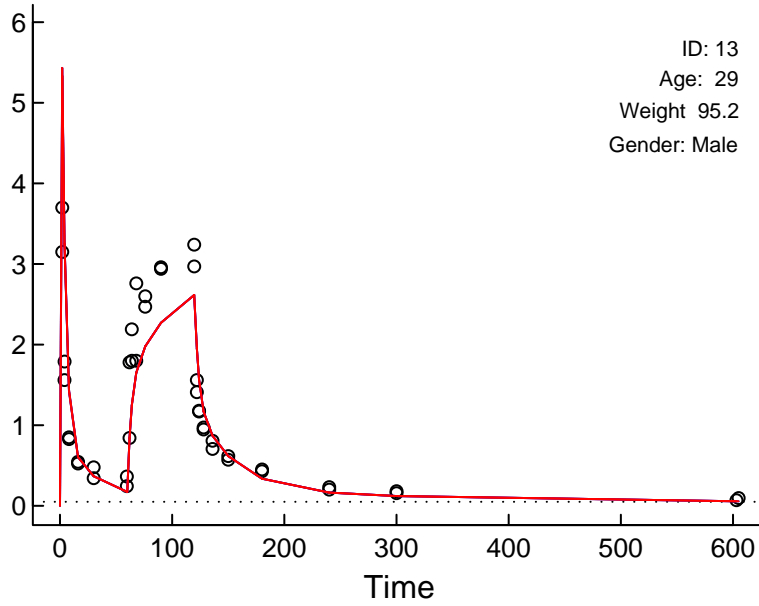


"Control.Marsh.Simulation.txt" (8664.613)

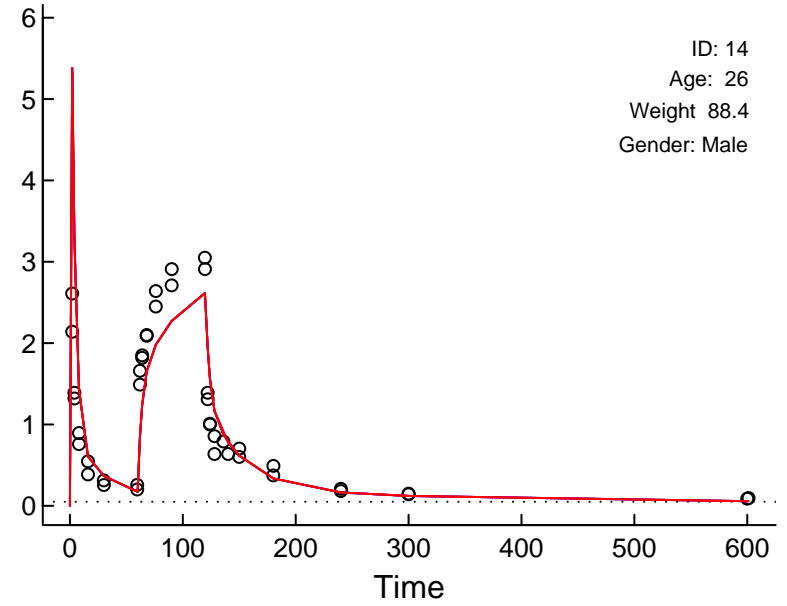
Linear Scale

Circles: Observed; X: BQL; Red: Post Hoc; Blue: Population; Arrows: Doses; Dotted: LOQ

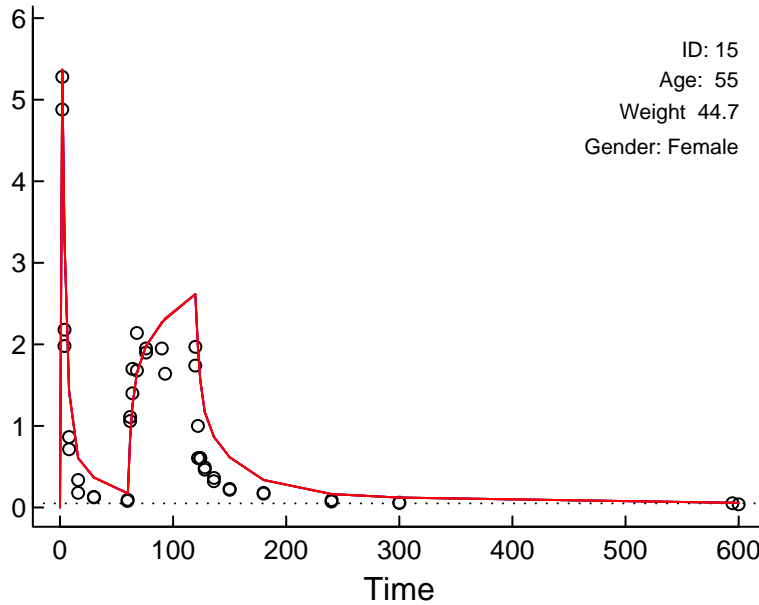
CP



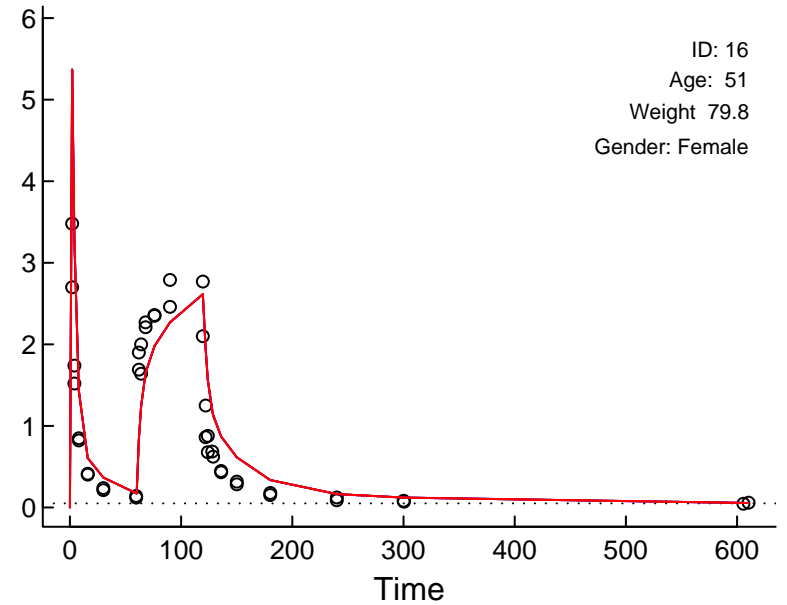
CP



CP



CP

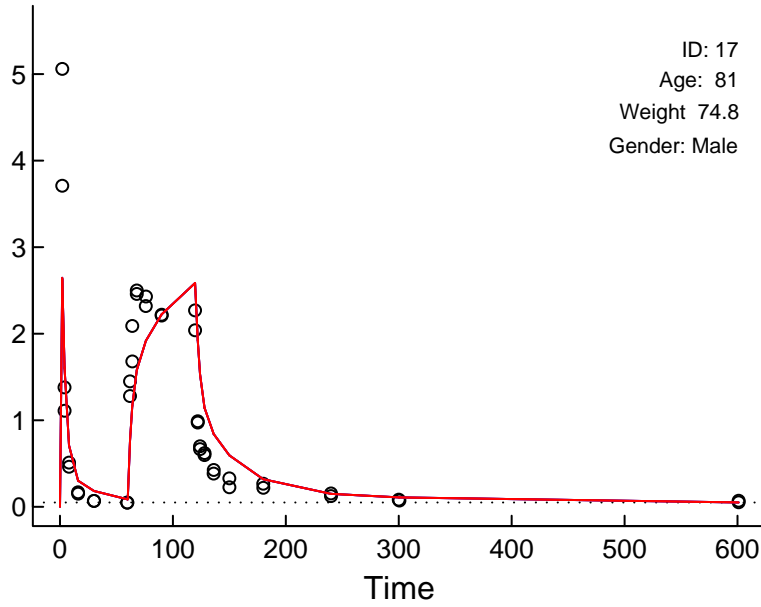


"Control.Marsh.Simulation.txt" (8664.613)

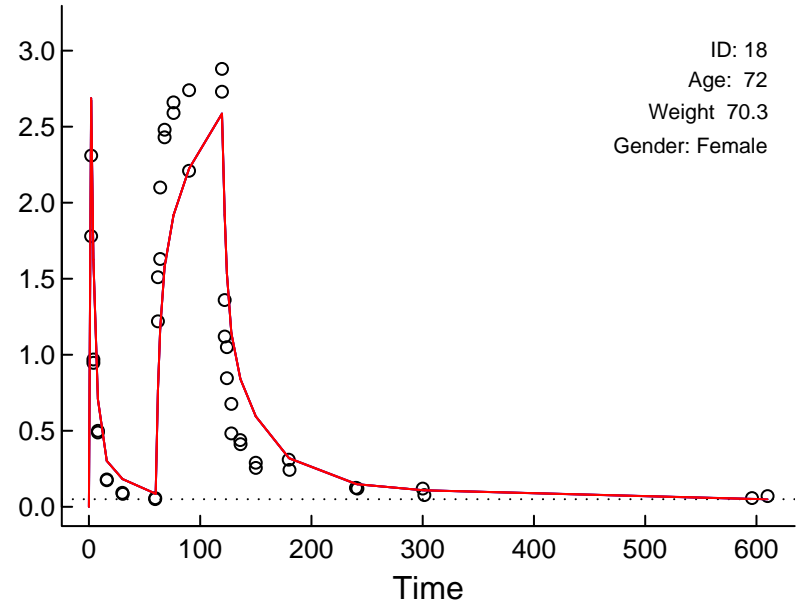
Linear Scale

Circles: Observed; X: BQL; Red: Post Hoc; Blue: Population; Arrows: Doses; Dotted: LOQ

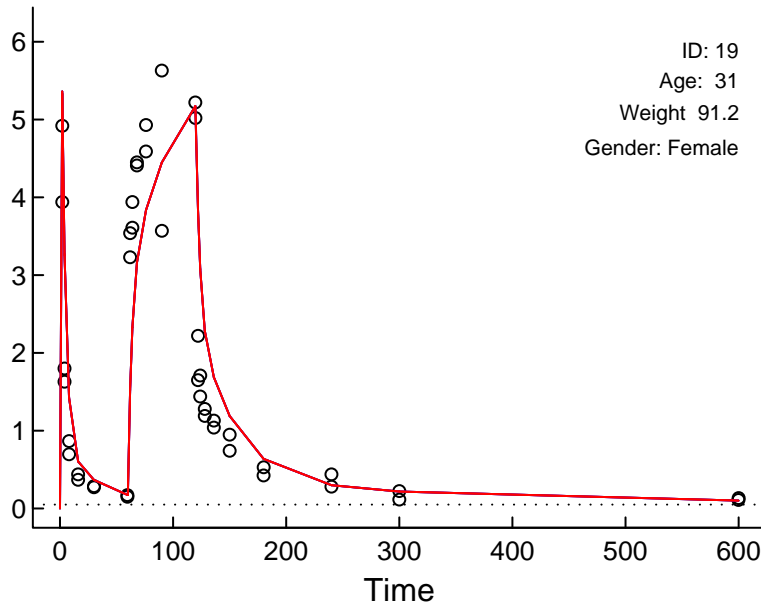
CP



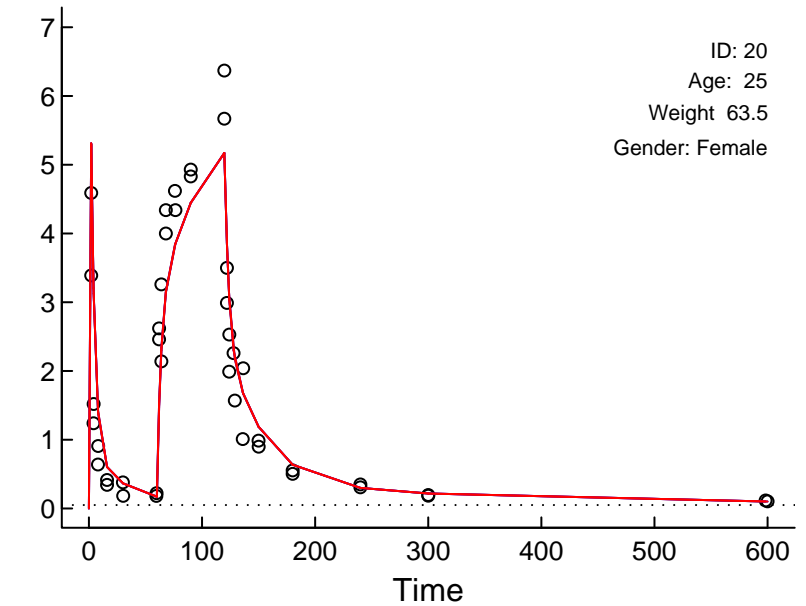
CP



CP



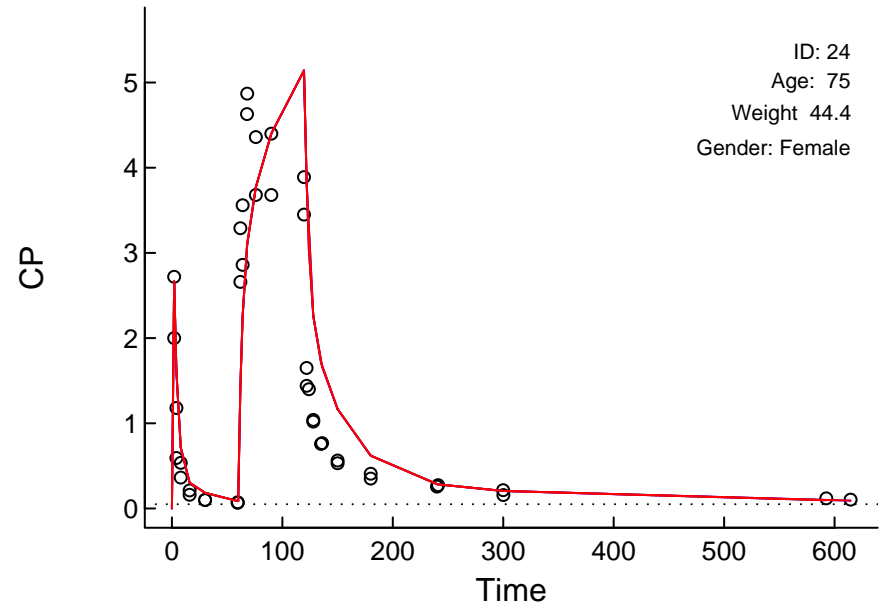
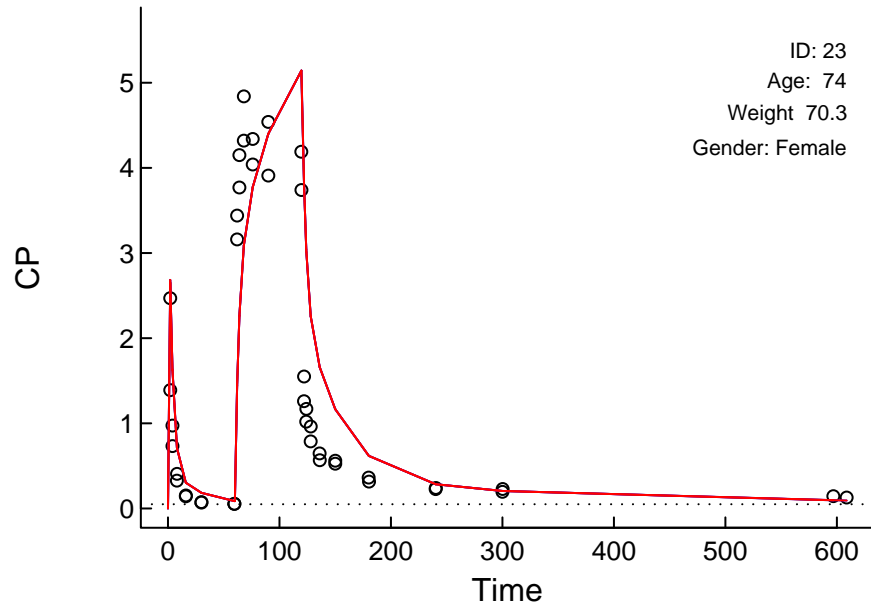
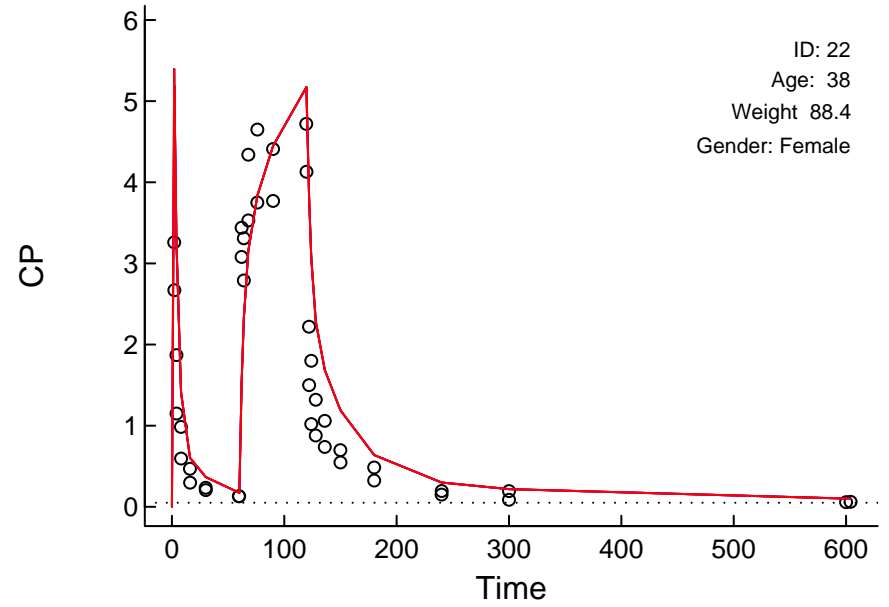
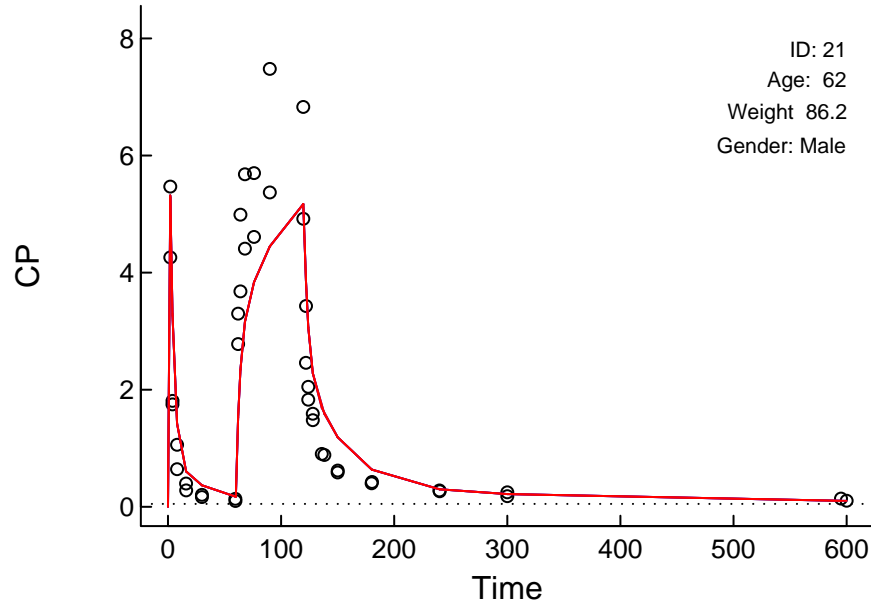
CP



"Control.Marsh.Simulation.txt" (8664.613)

Linear Scale

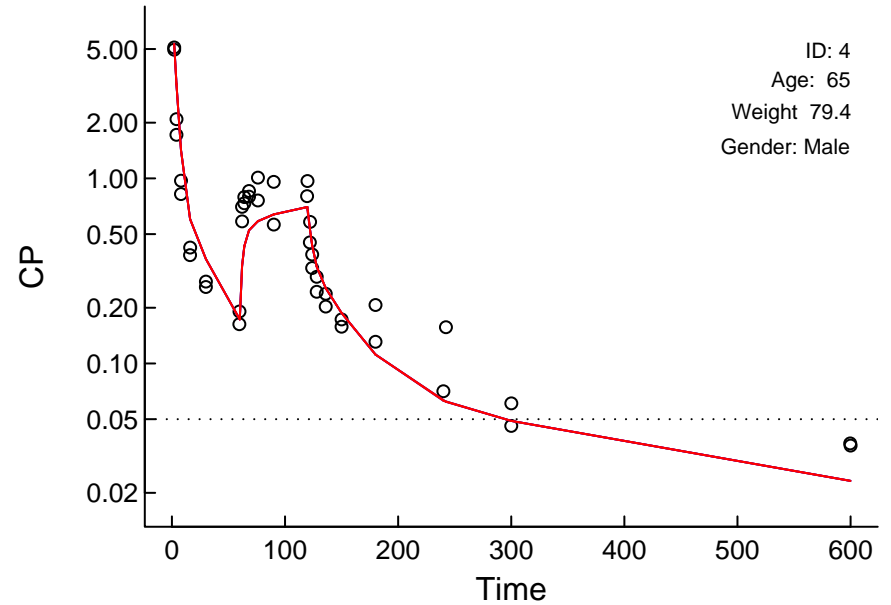
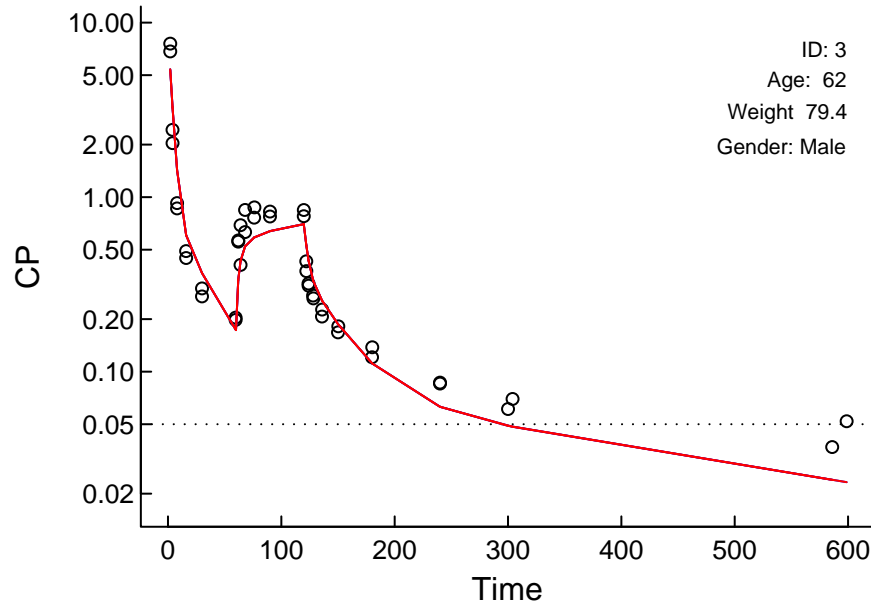
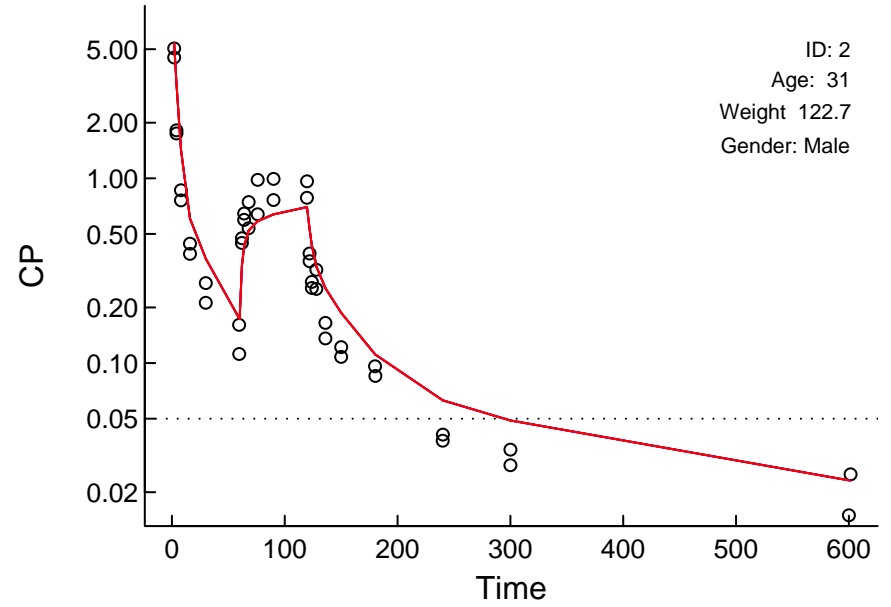
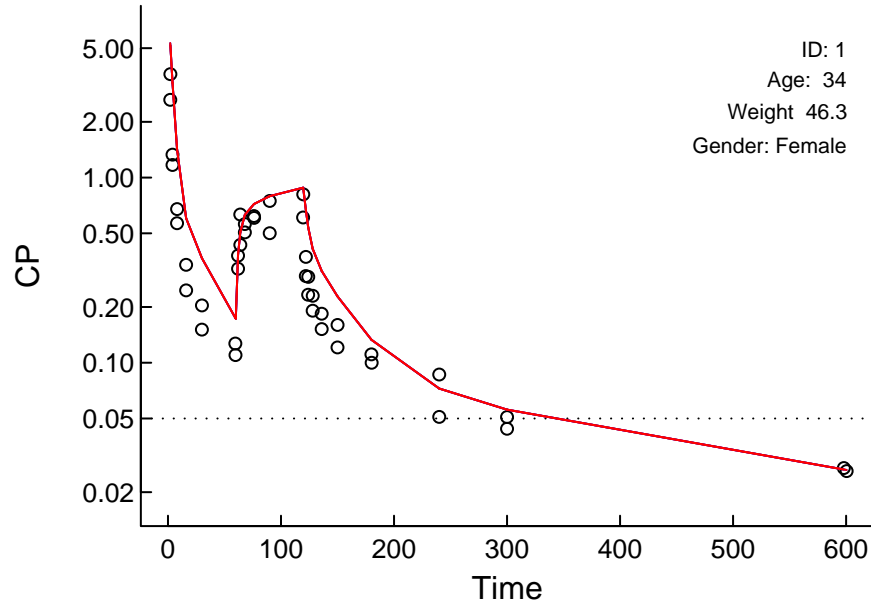
Circles: Observed; X: BQL; Red: Post Hoc; Blue: Population; Arrows: Doses; Dotted: LOQ



"Control.Marsh.Simulation.txt" (8664.613)

Log Scale

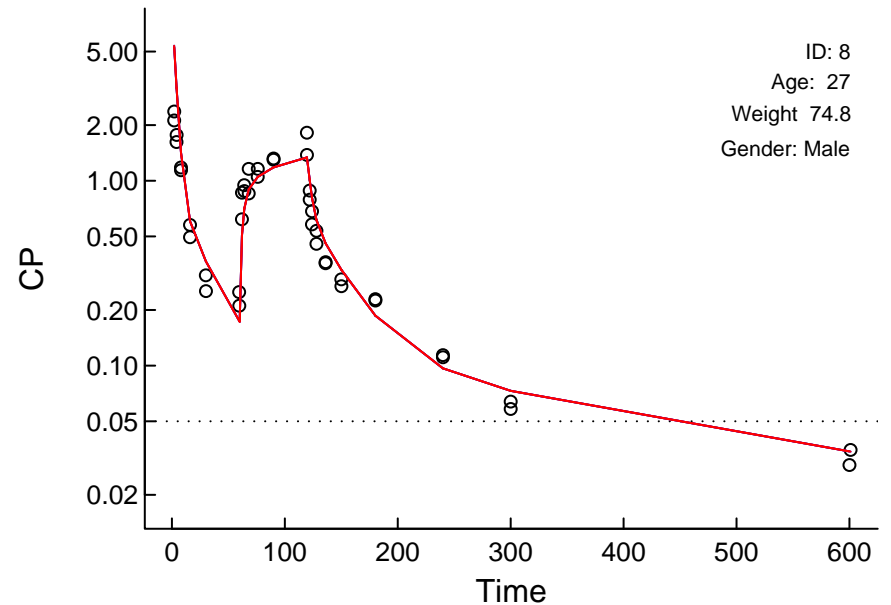
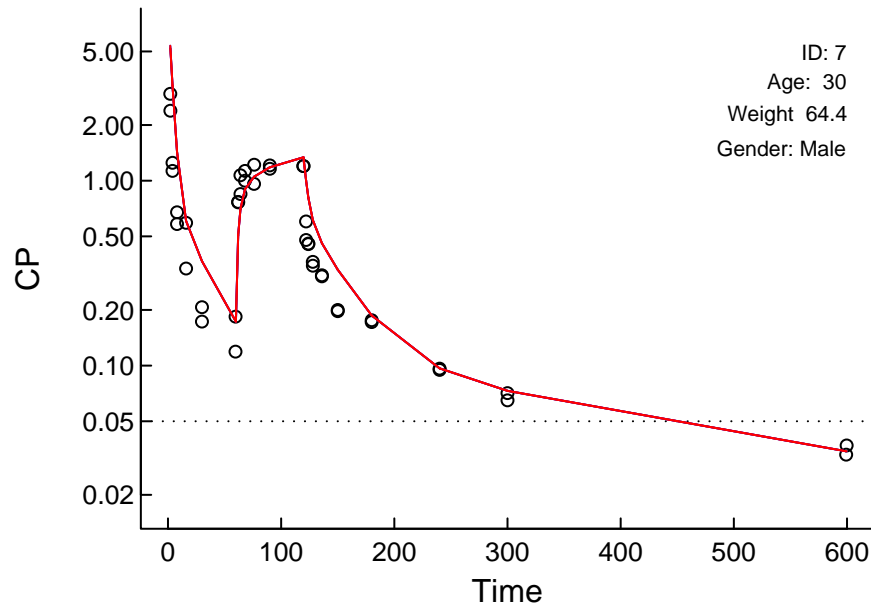
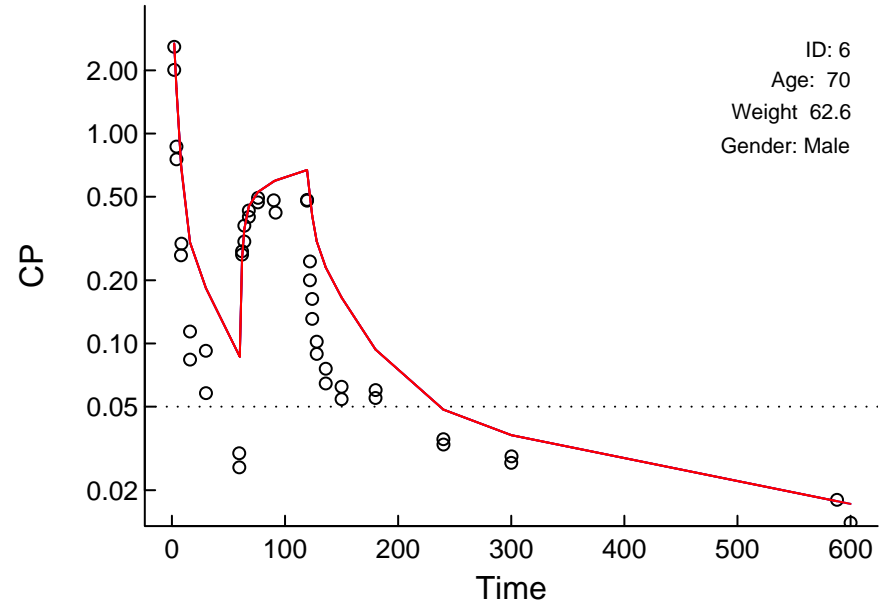
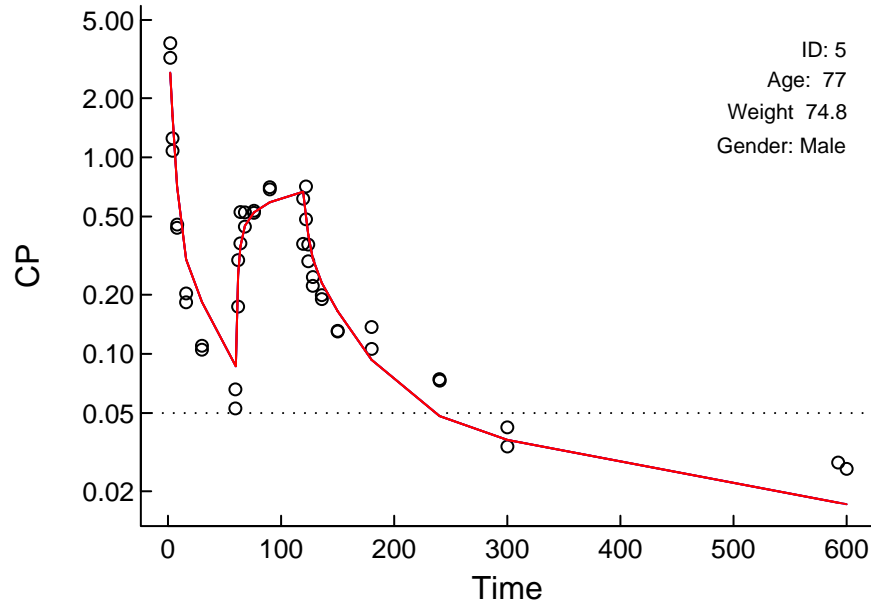
Circles: Observed; X: BQL; Red: Post Hoc; Blue: Population; Arrows: Doses; Dotted: LOQ



"Control.Marsh.Simulation.txt" (8664.613)

Log Scale

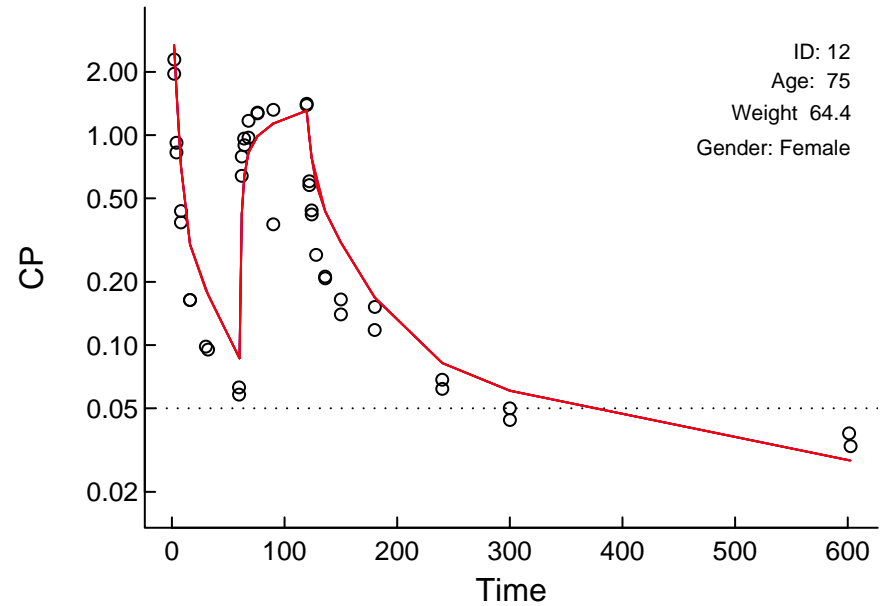
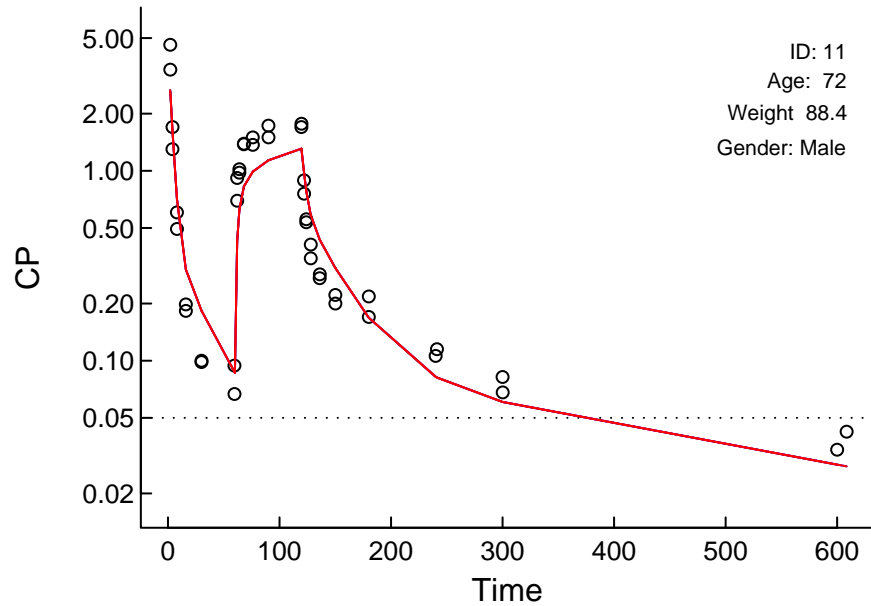
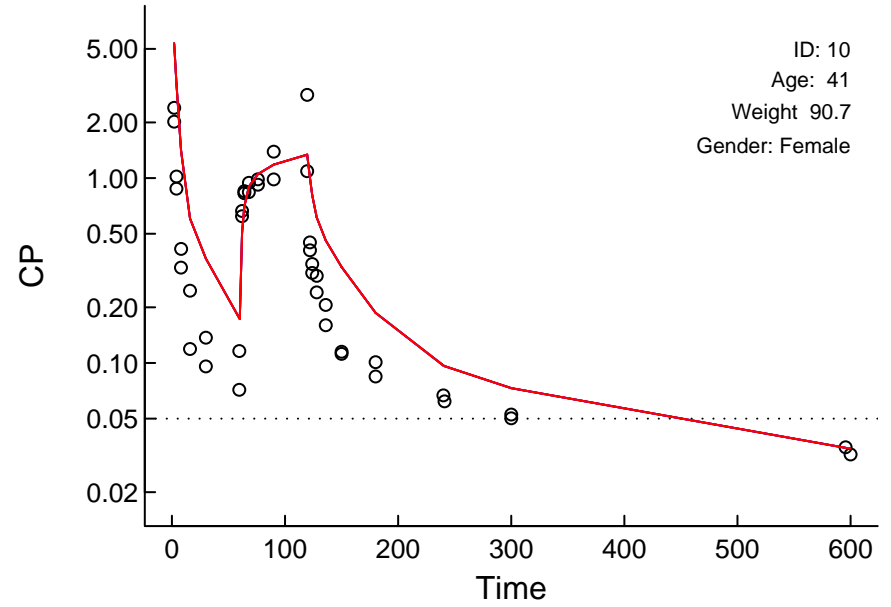
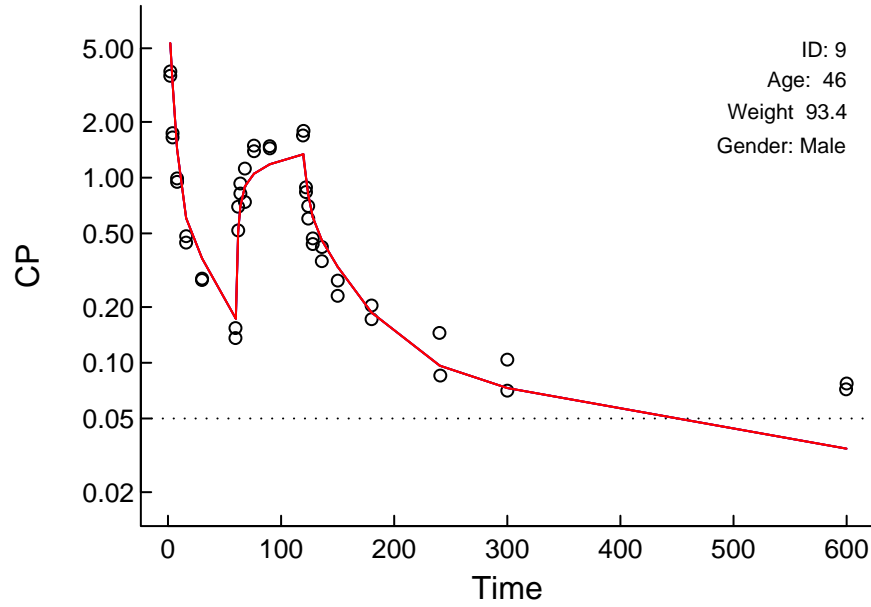
Circles: Observed; X: BQL; Red: Post Hoc; Blue: Population; Arrows: Doses; Dotted: LOQ



"Control.Marsh.Simulation.txt" (8664.613)

Log Scale

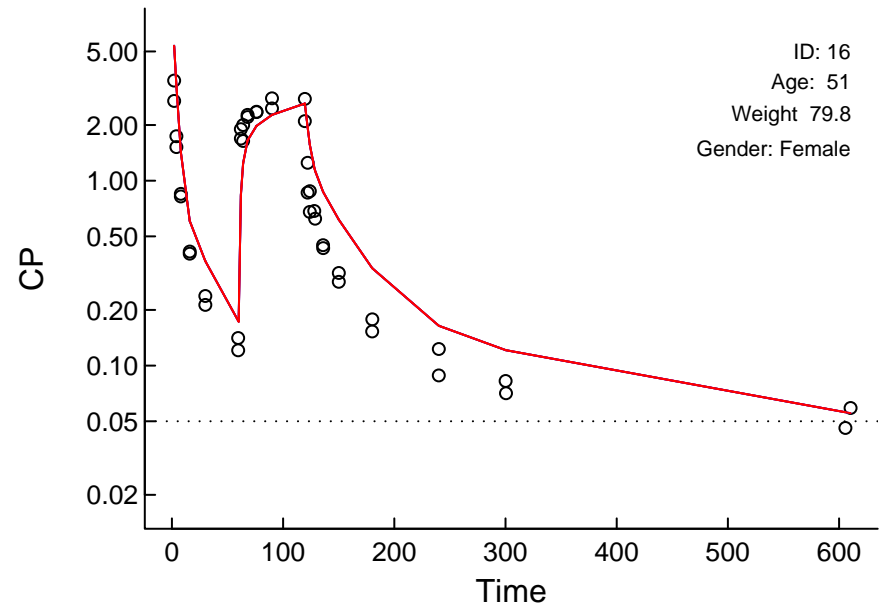
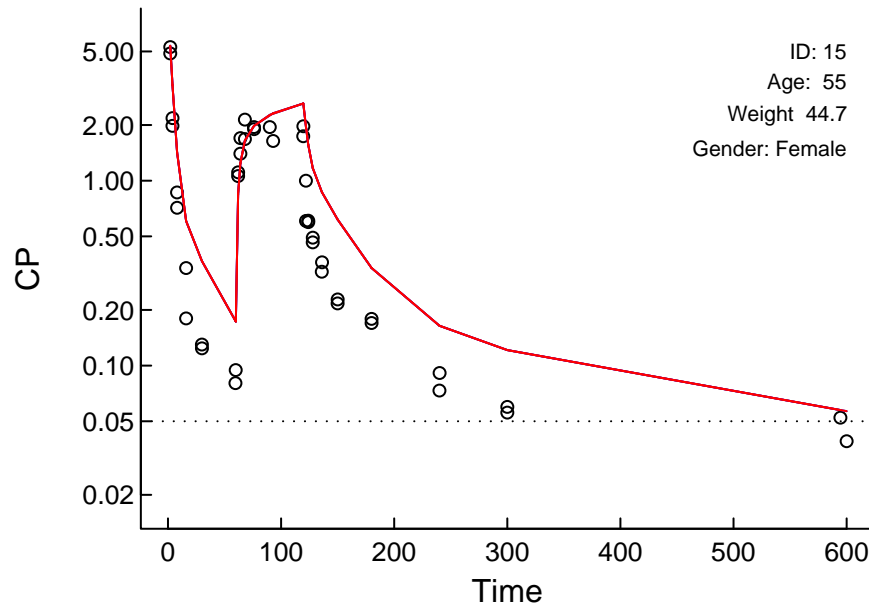
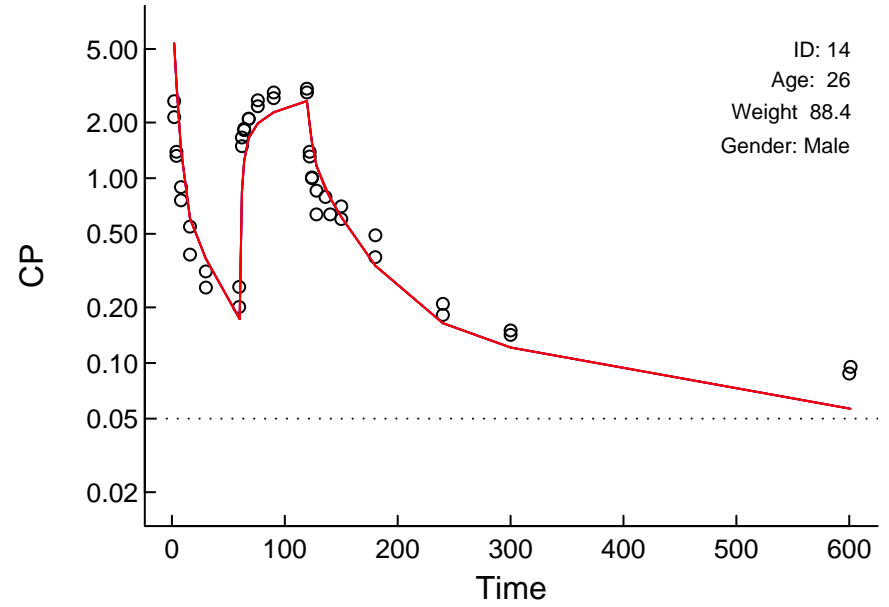
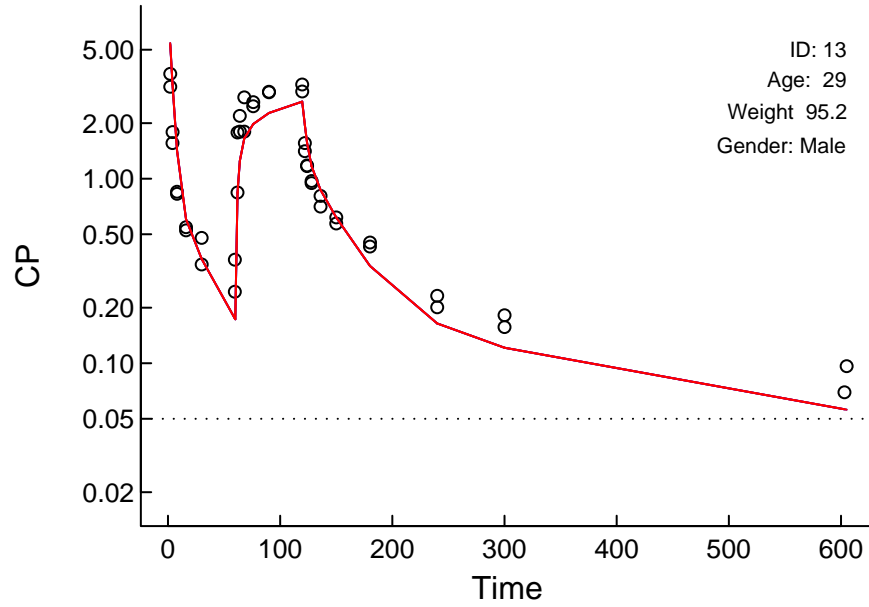
Circles: Observed; X: BQL; Red: Post Hoc; Blue: Population; Arrows: Doses; Dotted: LOQ



"Control.Marsh.Simulation.txt" (8664.613)

Log Scale

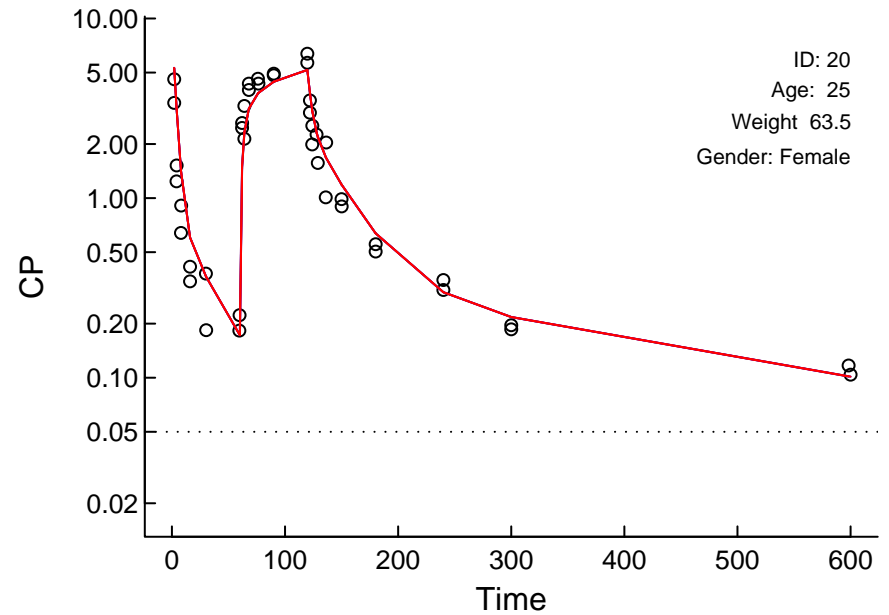
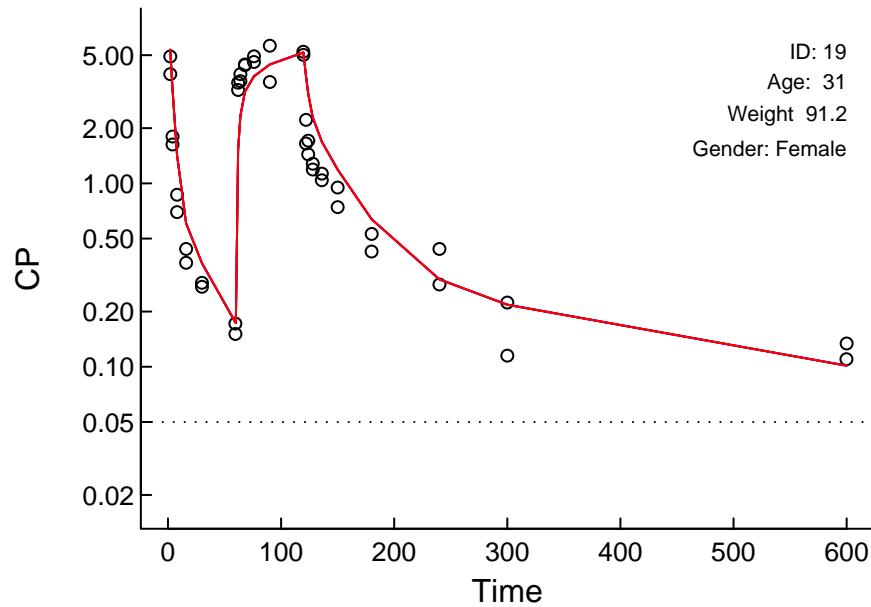
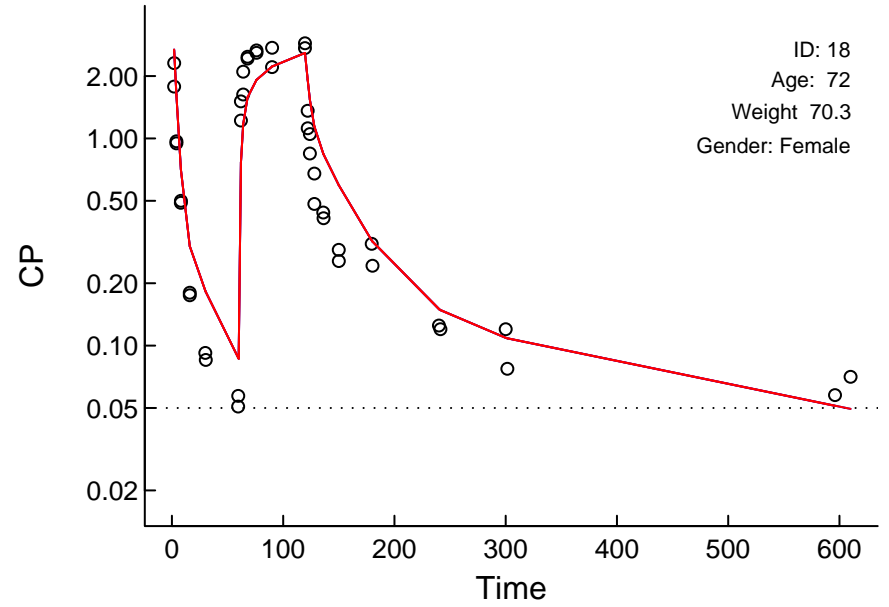
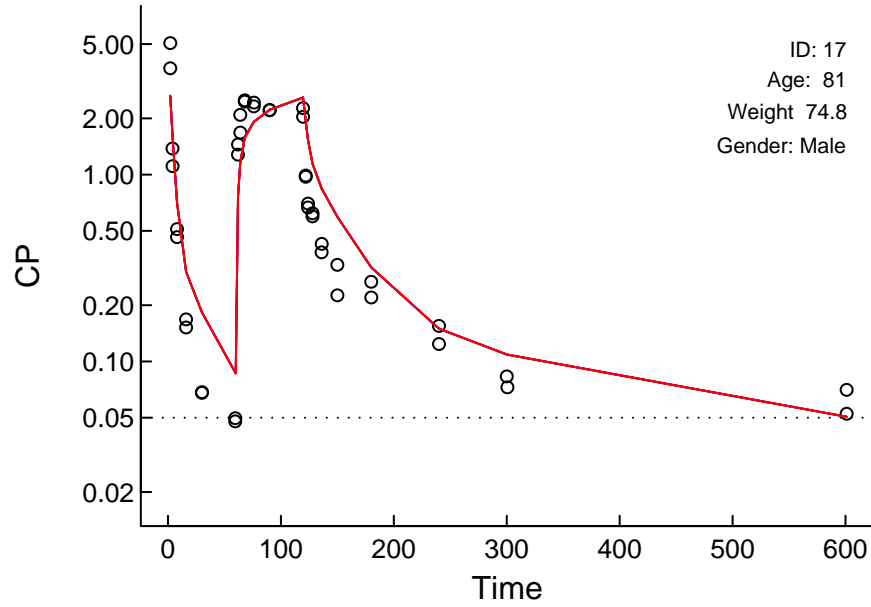
Circles: Observed; X: BQL; Red: Post Hoc; Blue: Population; Arrows: Doses; Dotted: LOQ



"Control.Marsh.Simulation.txt" (8664.613)

Log Scale

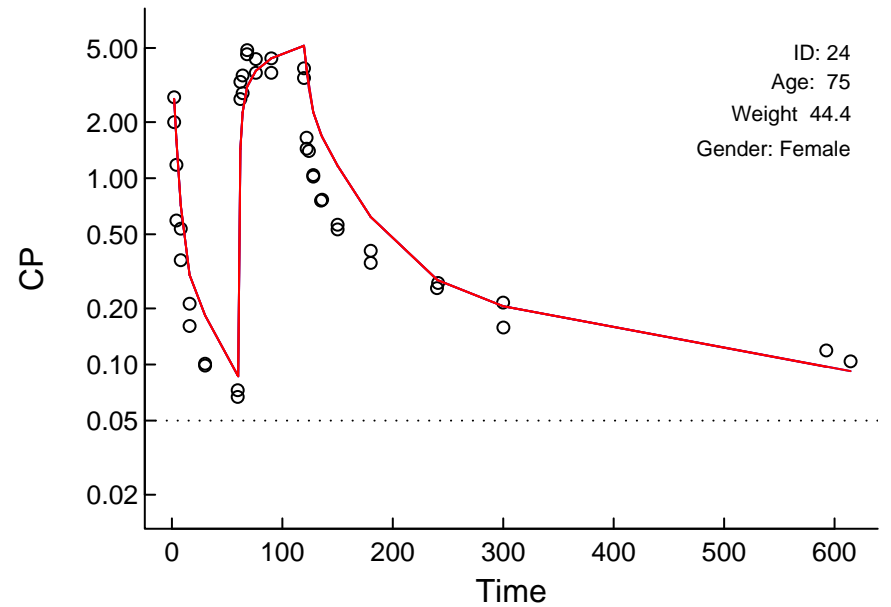
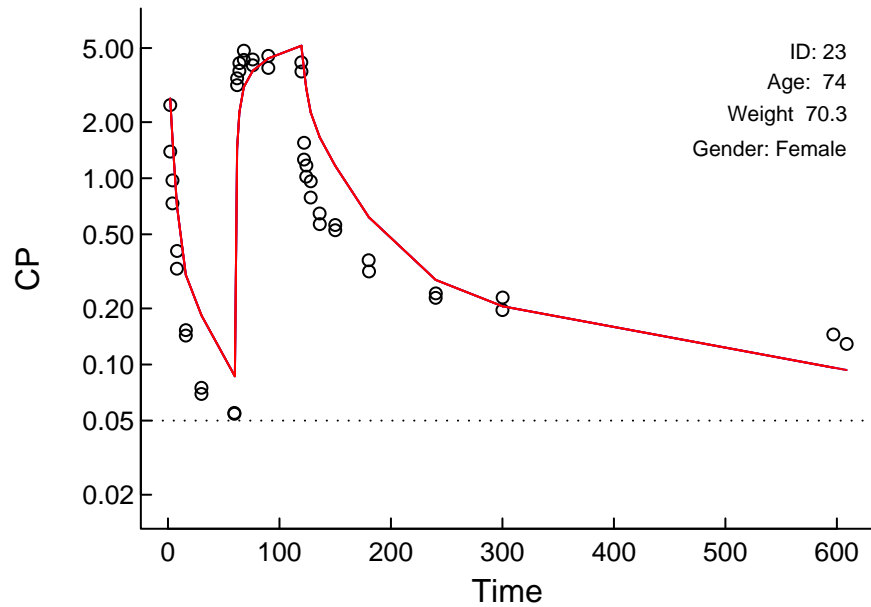
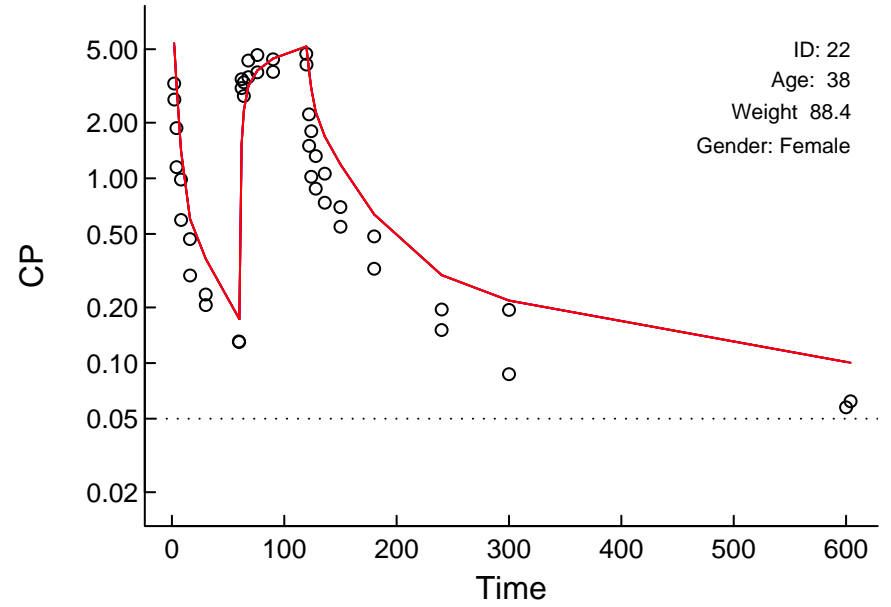
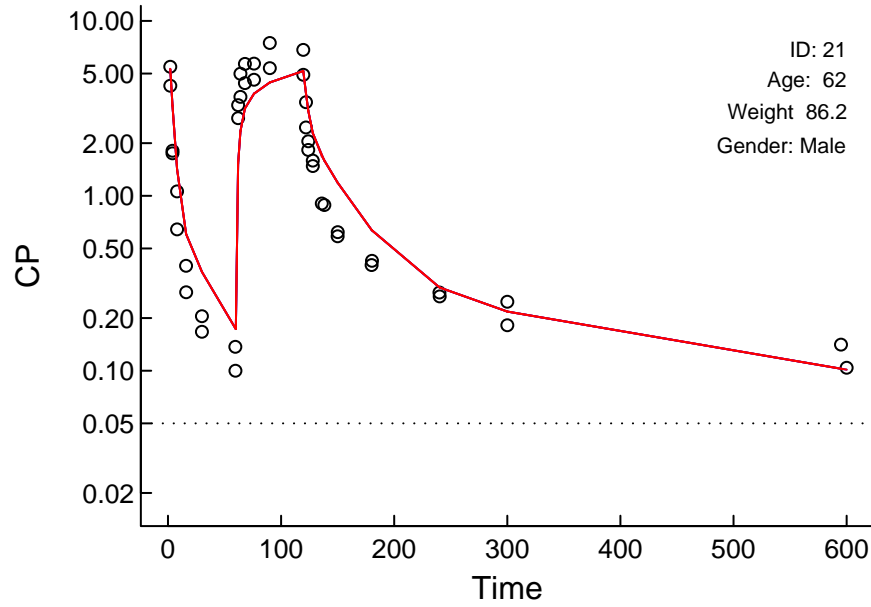
Circles: Observed; X: BQL; Red: Post Hoc; Blue: Population; Arrows: Doses; Dotted: LOQ



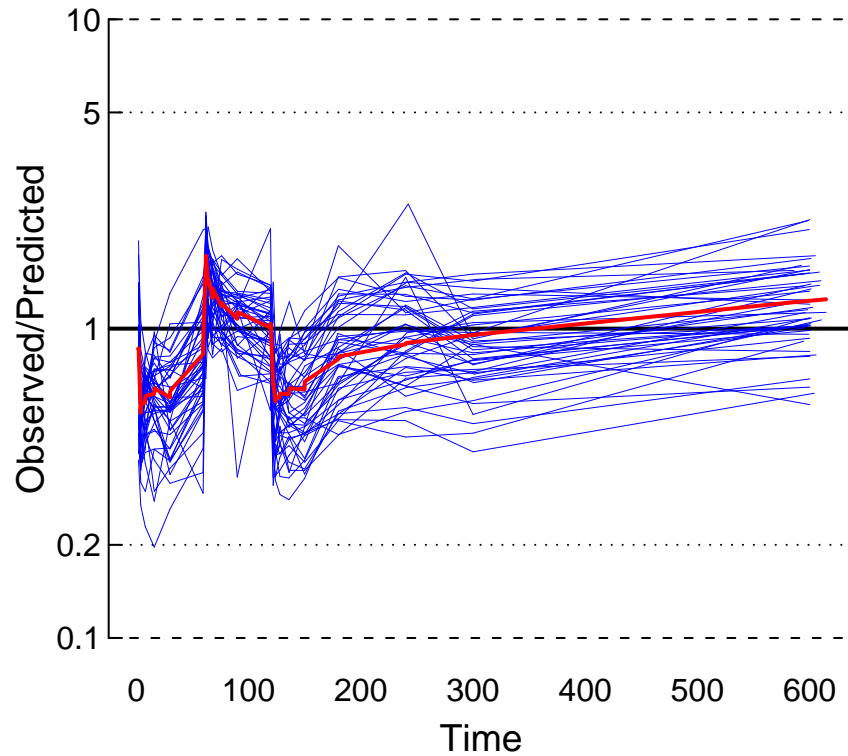
"Control.Marsh.Simulation.txt" (8664.613)

Log Scale

Circles: Observed; X: BQL; Red: Post Hoc; Blue: Population; Arrows: Doses; Dotted: LOQ

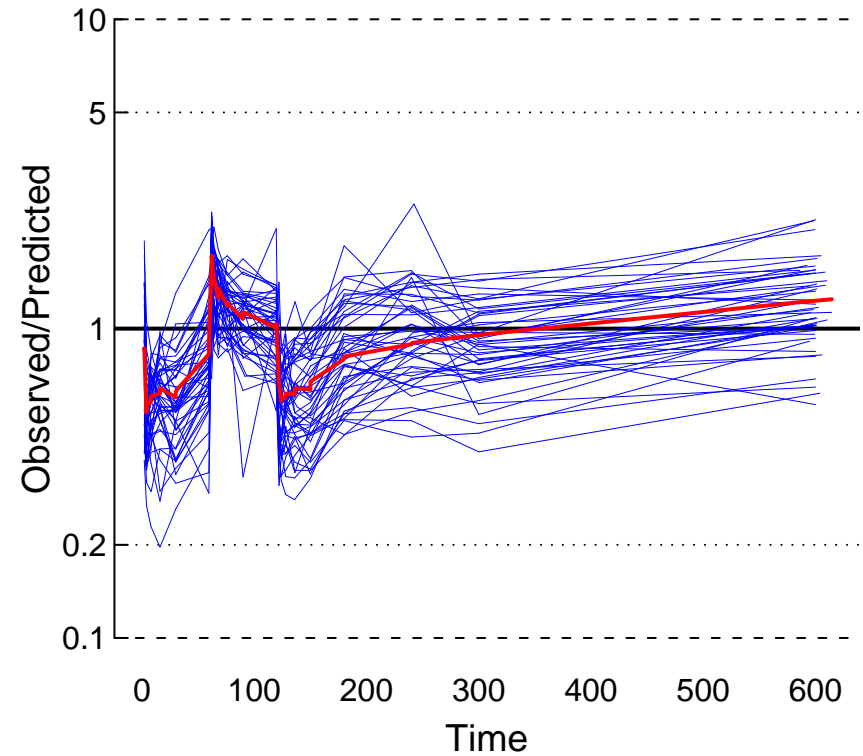


Population



MDPE = -0.191
MDAPE = 0.334

Post Hoc



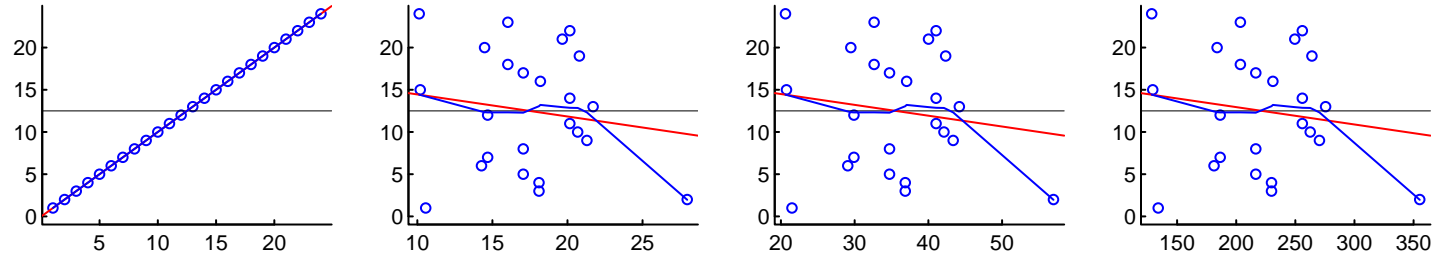
MDPE = -0.191
MDAPE = 0.334

"Control.Marsh.Simulation.txt" (8664.613)

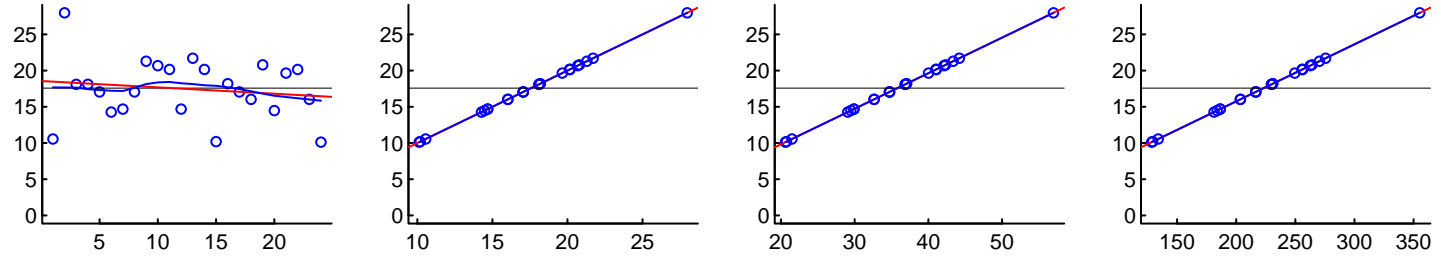
Post Hoc Value vs. Covariates

For categorical covariates, P values compare that value to all other values by t test
 Red: linear regression; Blue: smoother; Black: median; r and P values: linear regression

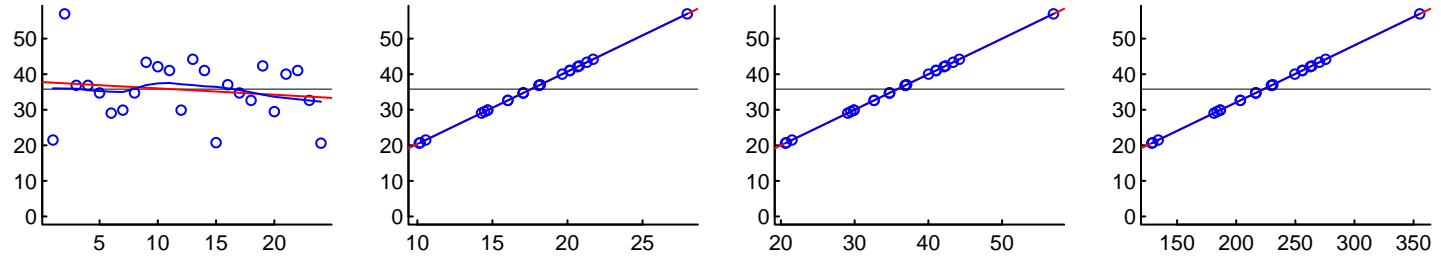
ID



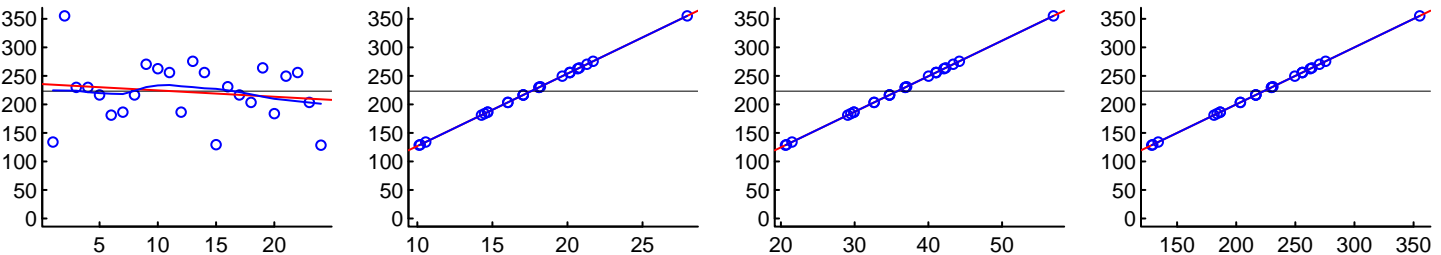
V1



V2



V3

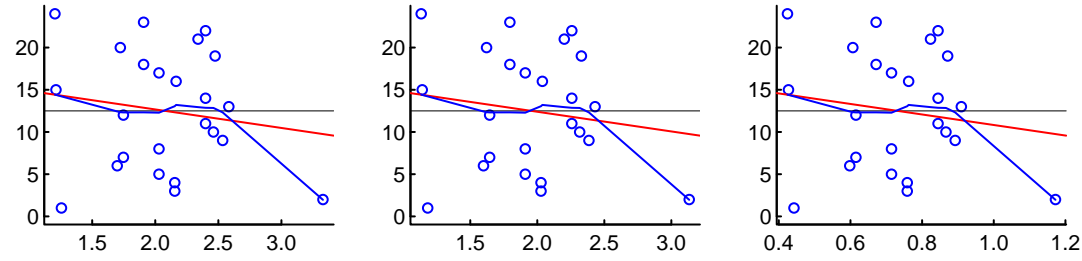


"Control.Marsh.Simulation.txt" (8664.613)

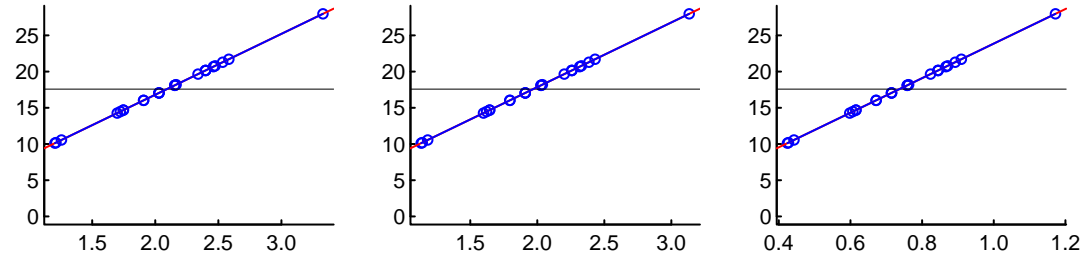
Post Hoc Value vs. Covariates

For categorical covariates, P values compare that value to all other values by t test
 Red: linear regression; Blue: smoother; Black: median; r and P values: linear regression

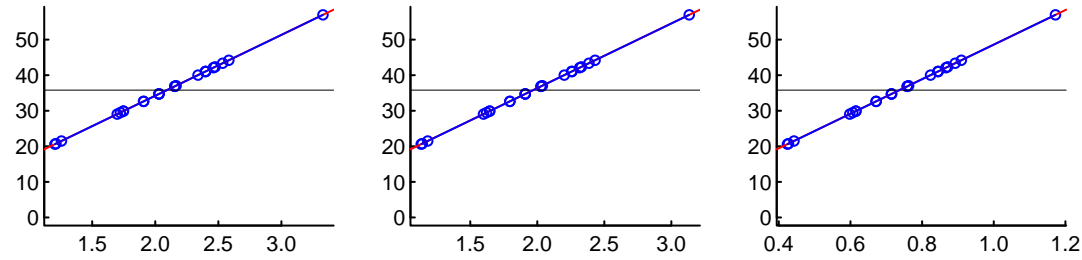
ID



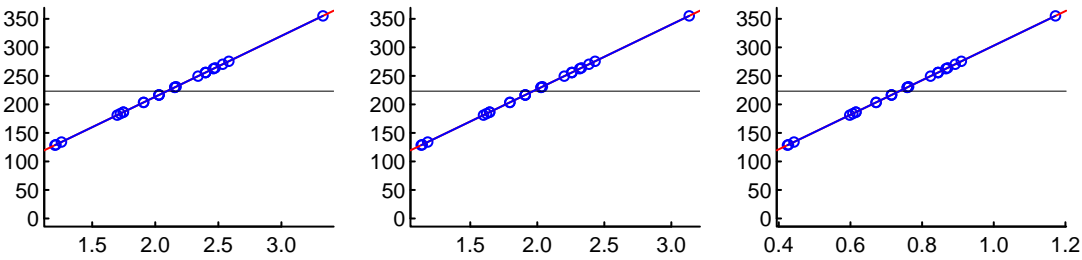
V1



V2



V3



CL1

CL2

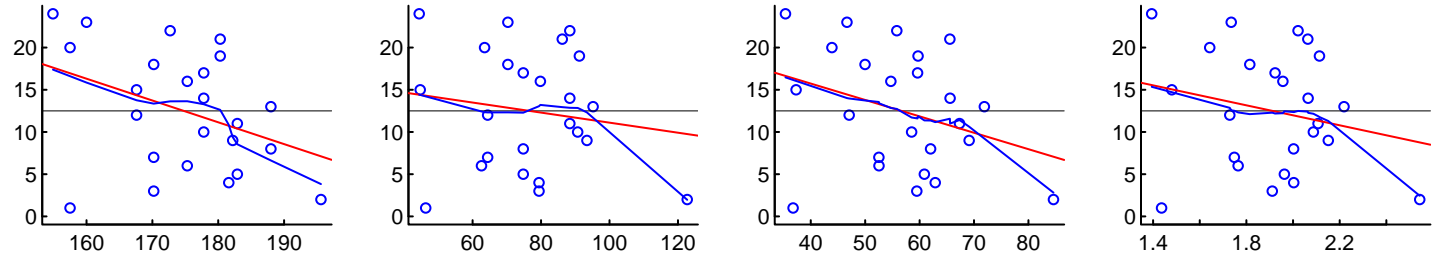
CL3

Age (years)

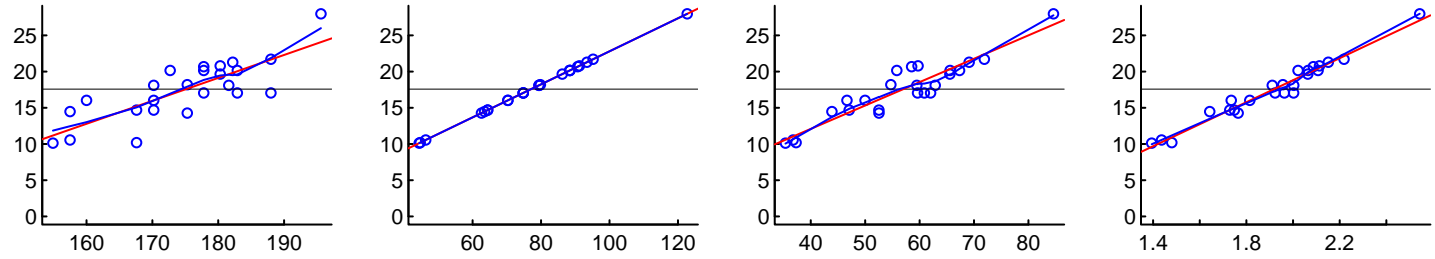
"Control.Marsh.Simulation.txt" (8664.613) Post Hoc Value vs. Covariates

For categorical covariates, P values compare that value to all other values by t test
Red: linear regression; Blue: smoother; Black: median; r and P values: linear regression

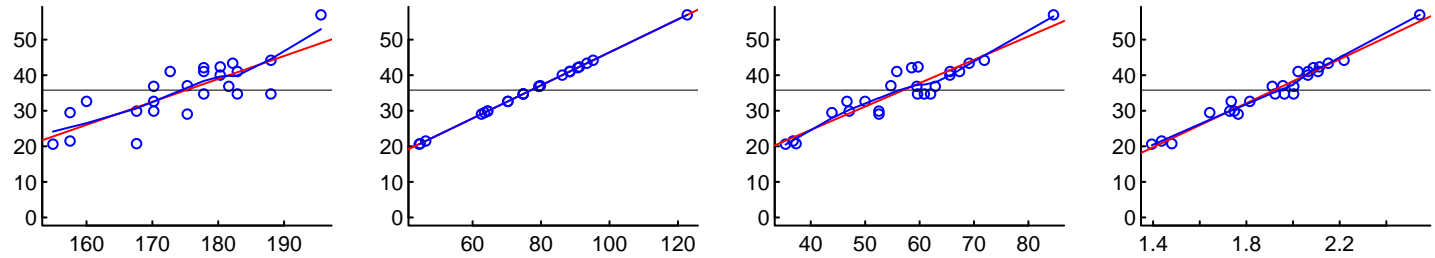
ID



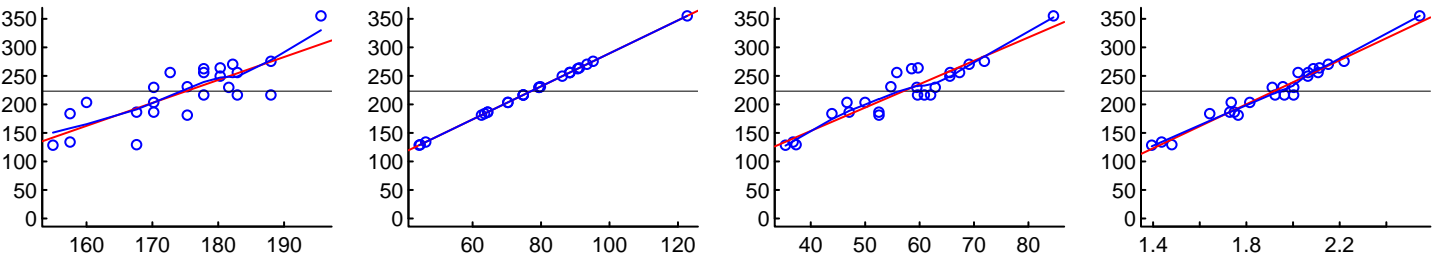
V1



V2



V3



HT

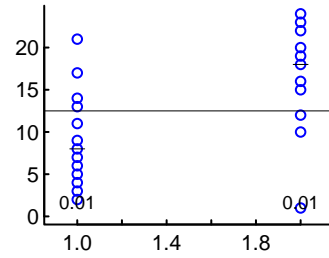
Weight

LBM

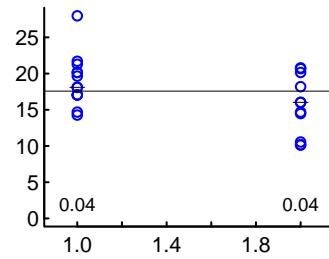
BSA

"Control.Marsh.Simulation.txt" (8664.613) Post Hoc Value vs. Covariates

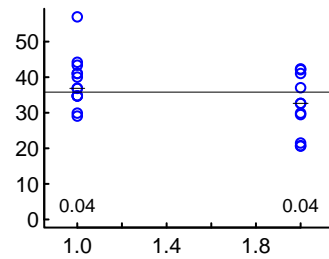
ID



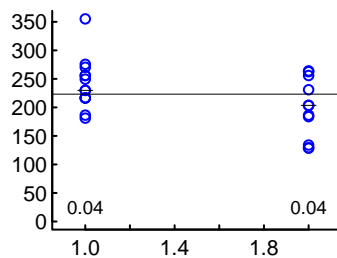
V1



V2



V3



Gender (M=1; F=2)

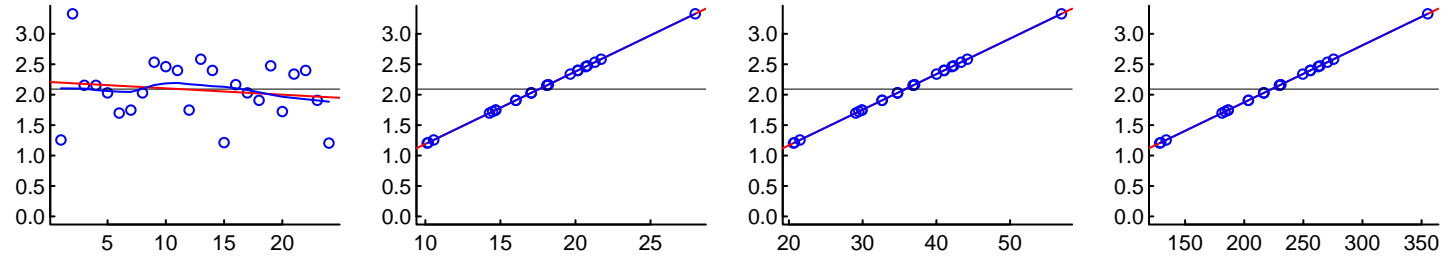
For categorical covariates, P values compare that value to all other values by t test
Red: linear regression; Blue: smoother; Black: median; r and P values: linear regression

"Control.Marsh.Simulation.txt" (8664.613)

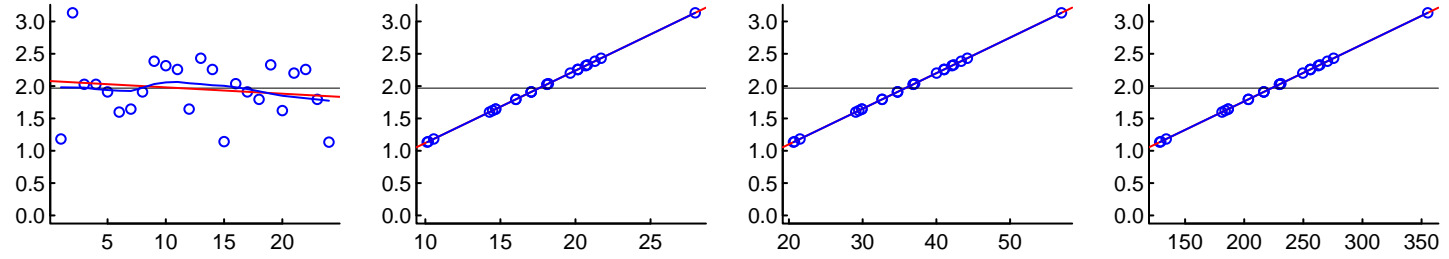
Post Hoc Value vs. Covariates

For categorical covariates, P values compare that value to all other values by t test
 Red: linear regression; Blue: smoother; Black: median; r and P values: linear regression

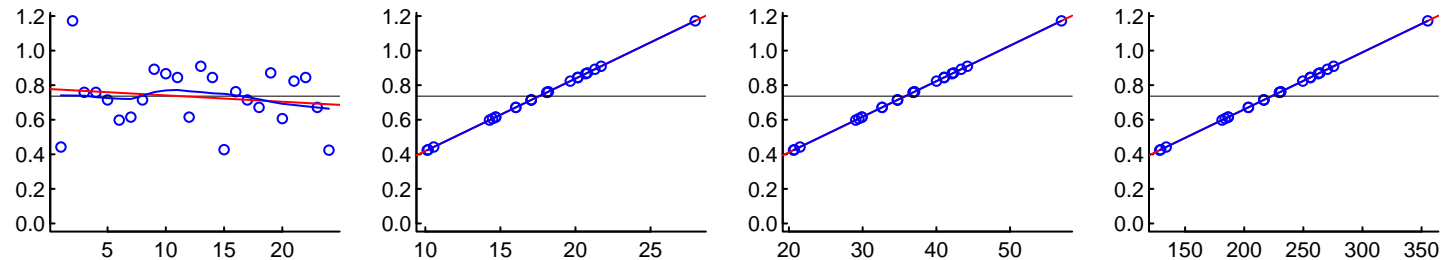
CL1



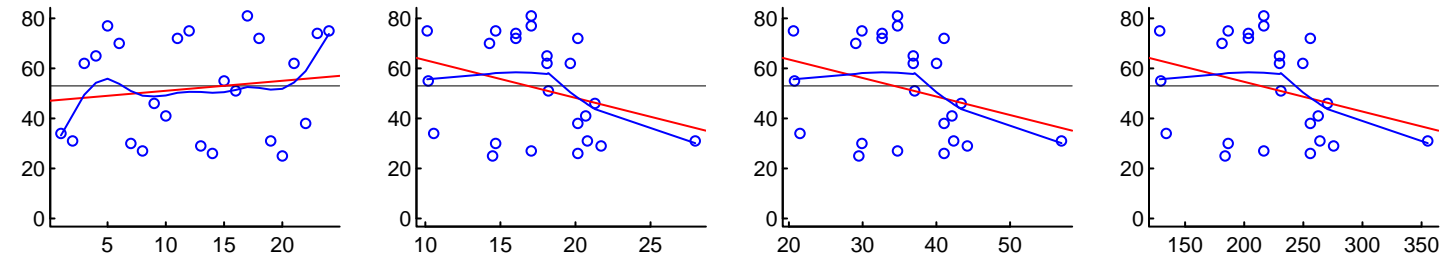
CL2



CL3



AGE

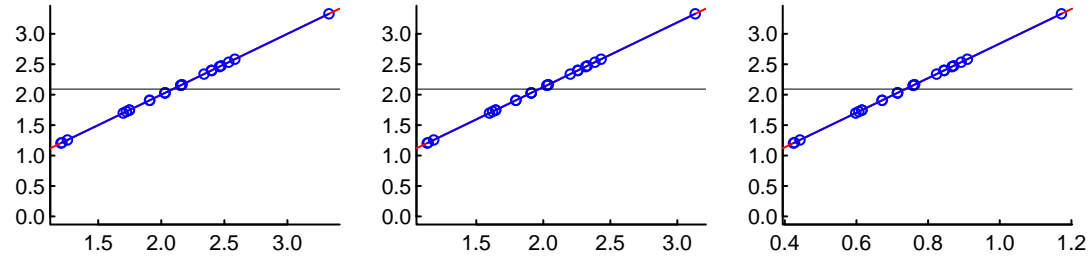


"Control.Marsh.Simulation.txt" (8664.613)

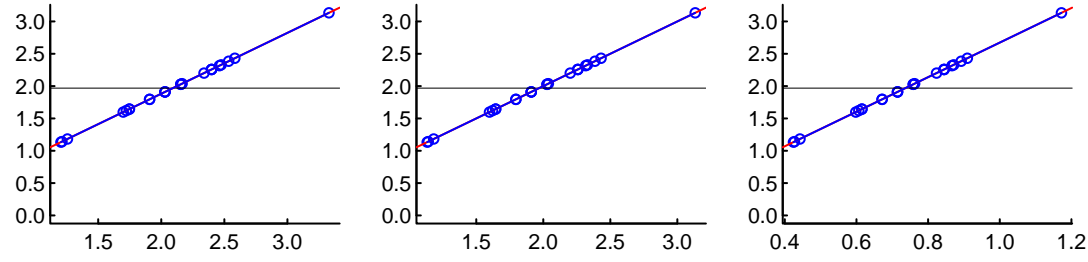
Post Hoc Value vs. Covariates

For categorical covariates, P values compare that value to all other values by t test
 Red: linear regression; Blue: smoother; Black: median; r and P values: linear regression

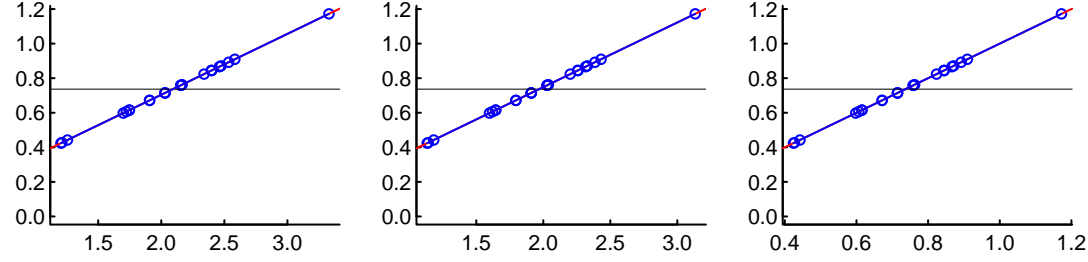
CL1



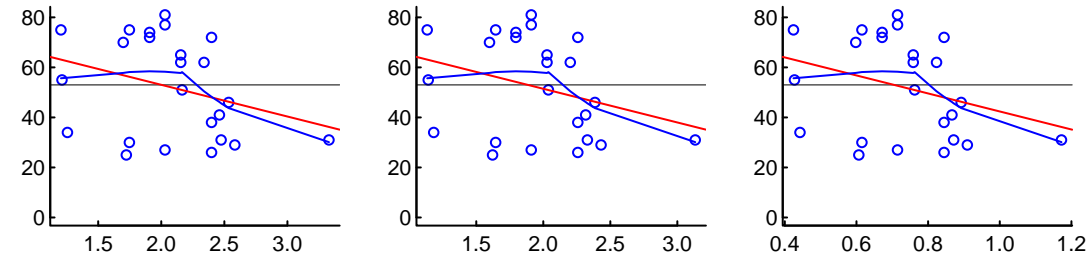
CL2



CL3



AGE



CL1

CL2

CL3

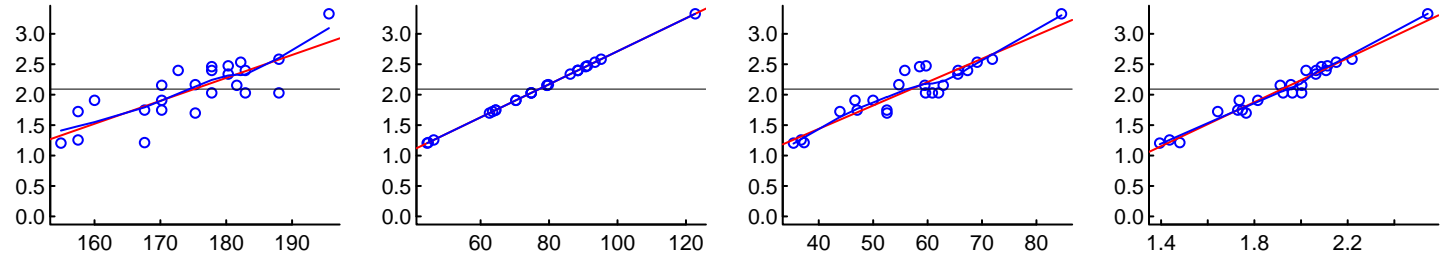
Age (years)

"Control.Marsh.Simulation.txt" (8664.613)

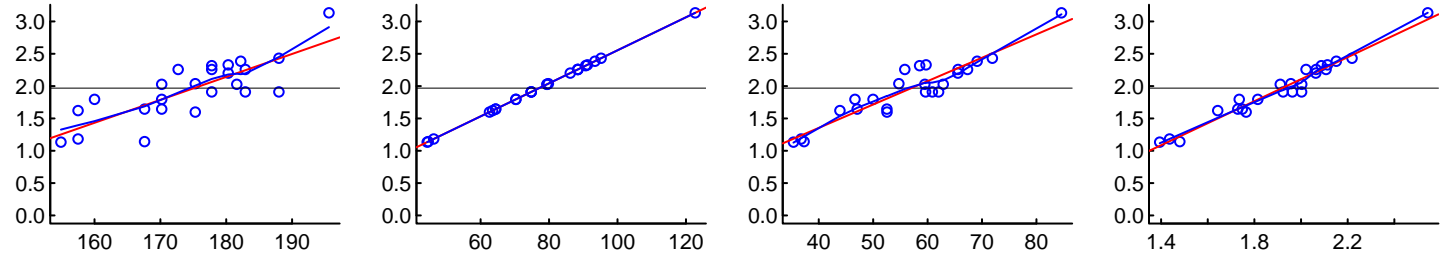
Post Hoc Value vs. Covariates

For categorical covariates, P values compare that value to all other values by t test
 Red: linear regression; Blue: smoother; Black: median; r and P values: linear regression

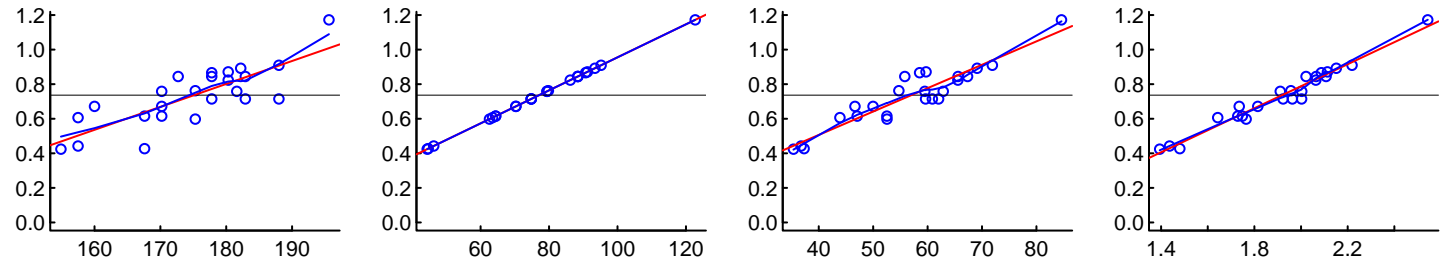
CL1



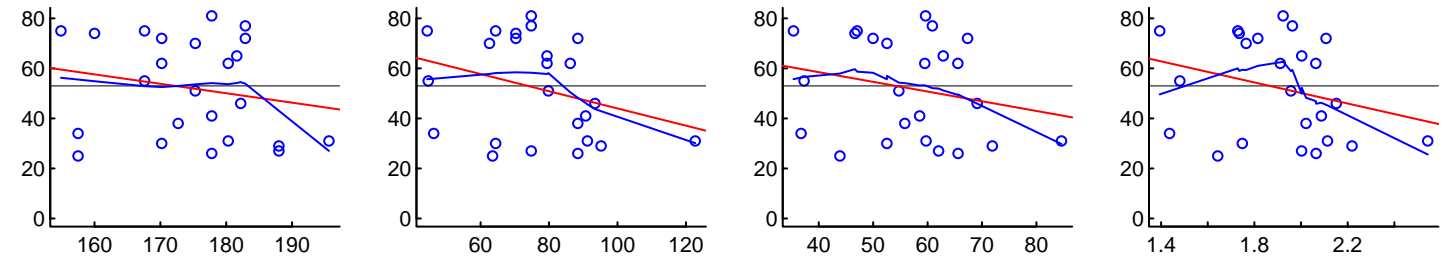
CL2



CL3



AGE



HT

Weight

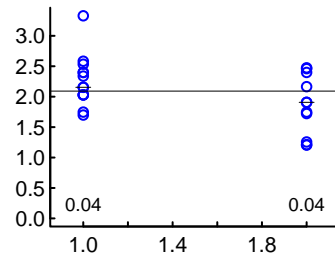
LBM

BSA

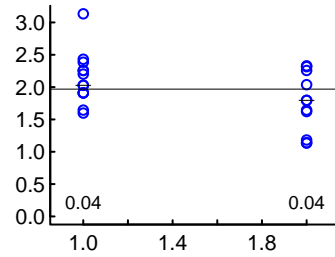
"Control.Marsh.Simulation.txt" (8664.613) Post Hoc Value vs. Covariates

For categorical covariates, P values compare that value to all other values by t test
Red: linear regression; Blue: smoother; Black: median; r and P values: linear regression

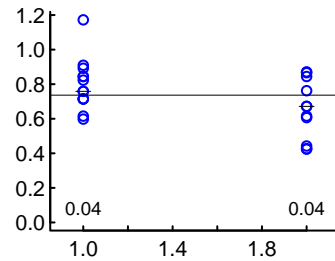
CL1



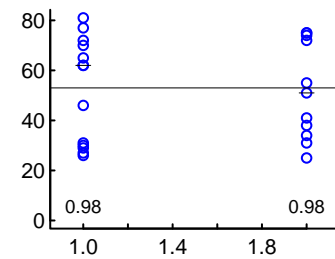
CL2



CL3



AGE



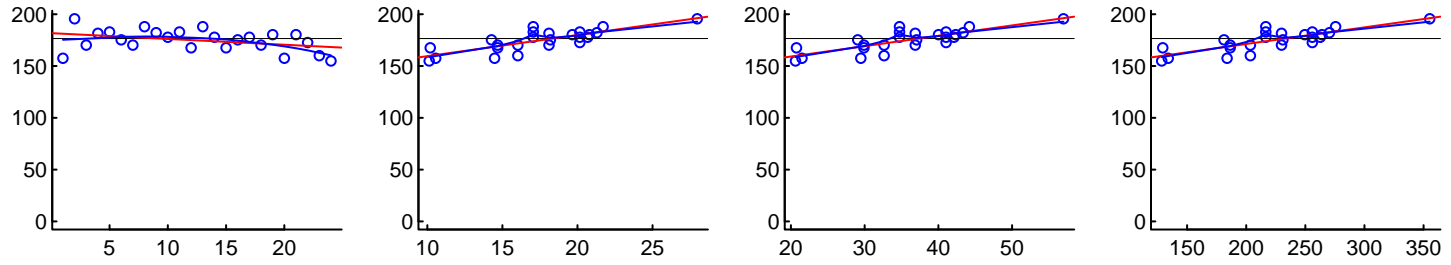
Gender (M=1; F=2)

"Control.Marsh.Simulation.txt" (8664.613)

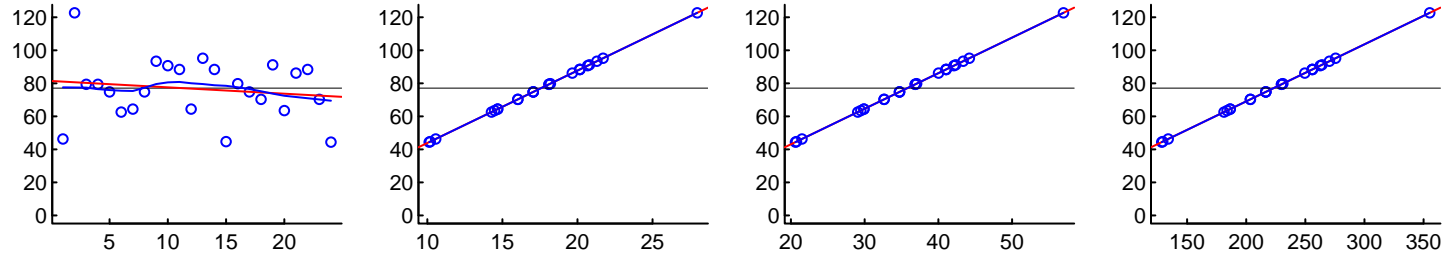
Post Hoc Value vs. Covariates

For categorical covariates, P values compare that value to all other values by t test
 Red: linear regression; Blue: smoother; Black: median; r and P values: linear regression

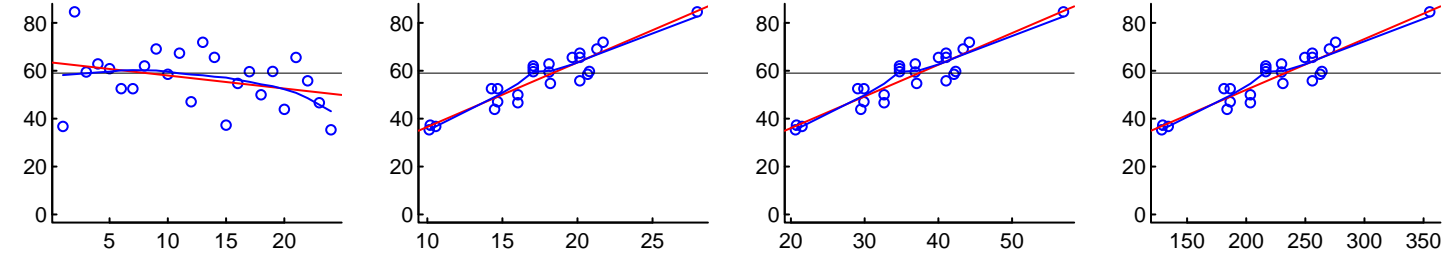
HT



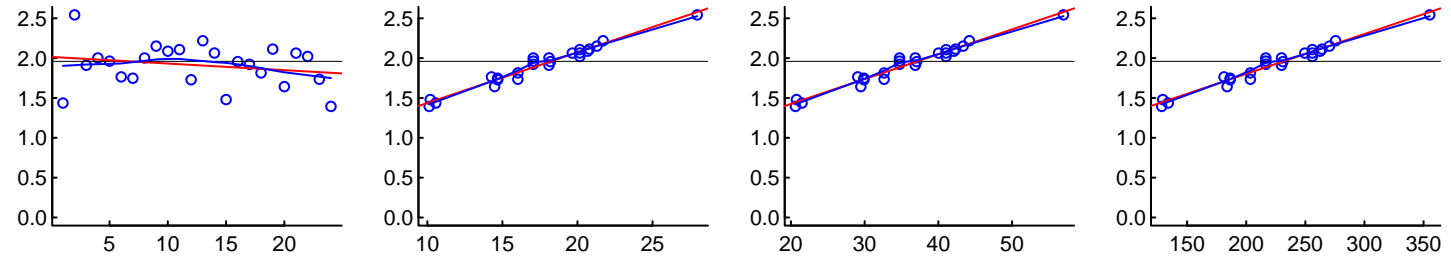
WT



LBM



BSA

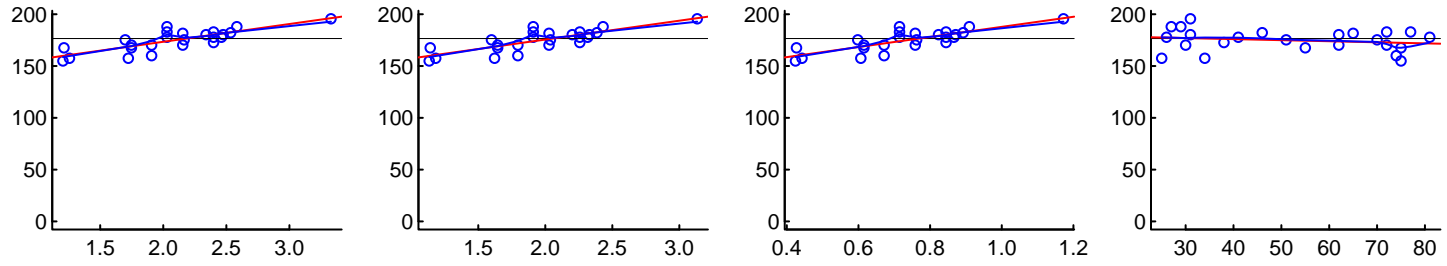


"Control.Marsh.Simulation.txt" (8664.613)

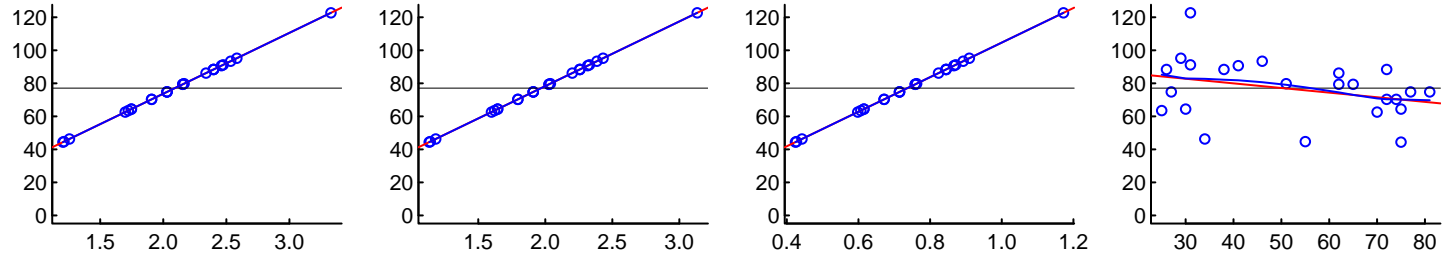
Post Hoc Value vs. Covariates

For categorical covariates, P values compare that value to all other values by t test
 Red: linear regression; Blue: smoother; Black: median; r and P values: linear regression

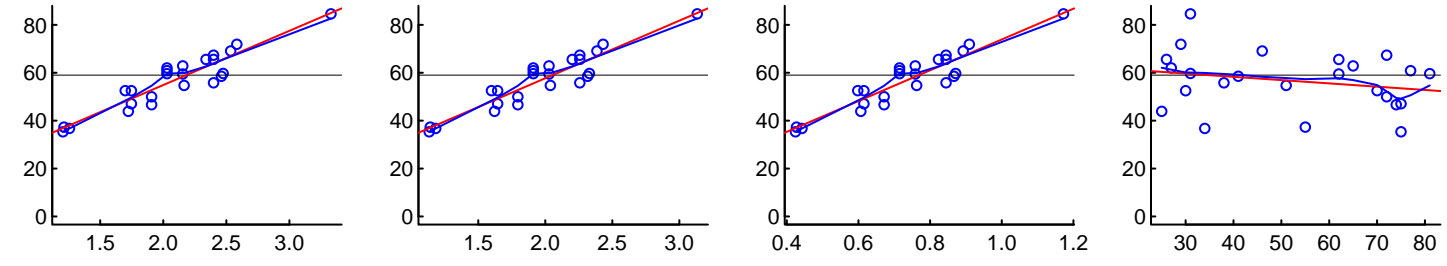
HT



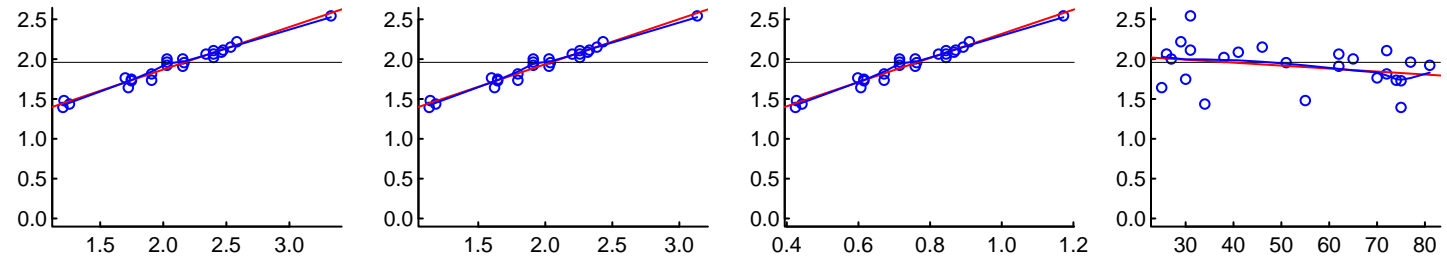
WT



LBM



BSA



CL1

CL2

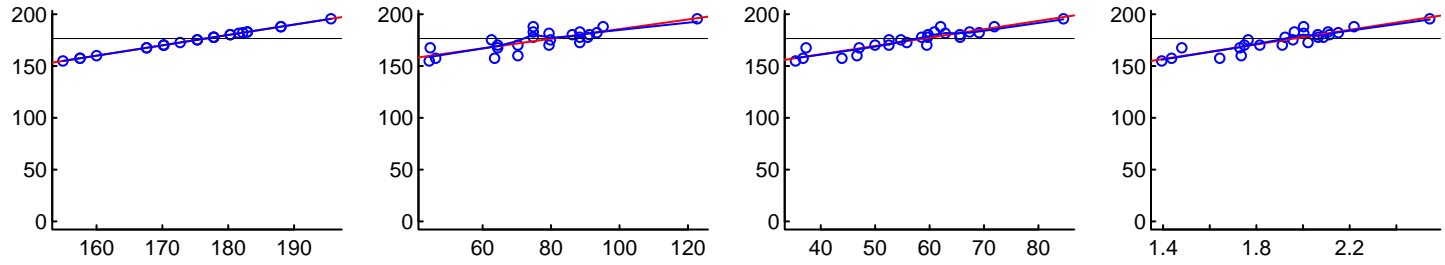
CL3

Age (years)

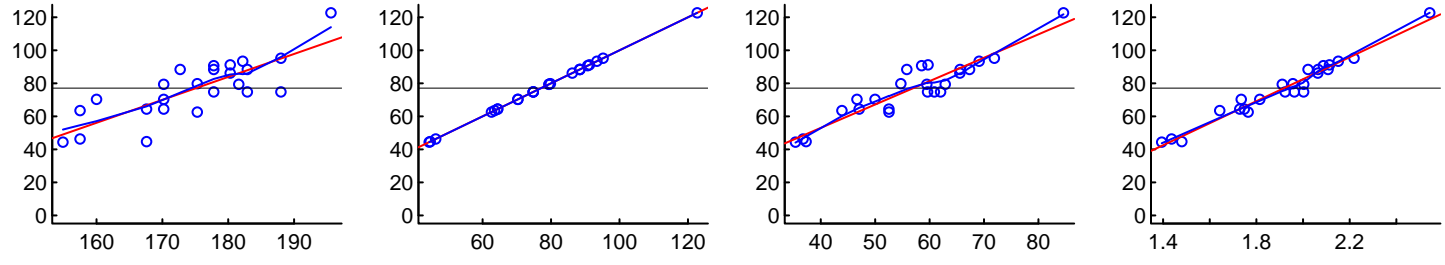
"Control.Marsh.Simulation.txt" (8664.613)

Post Hoc Value vs. Covariates

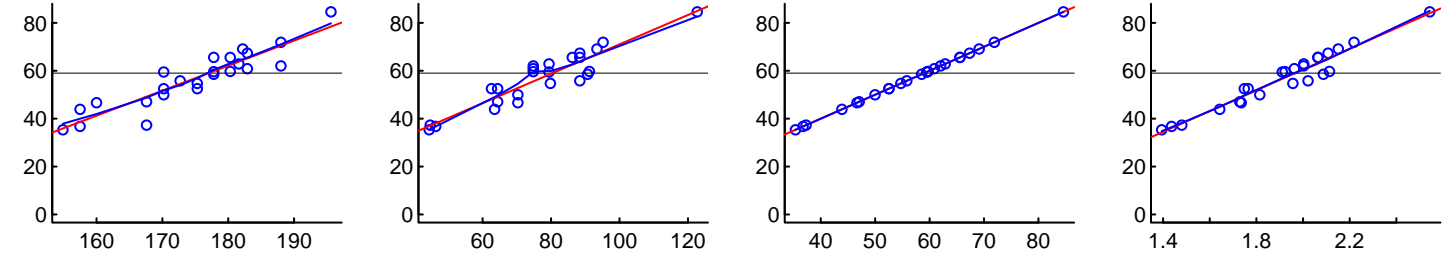
HT



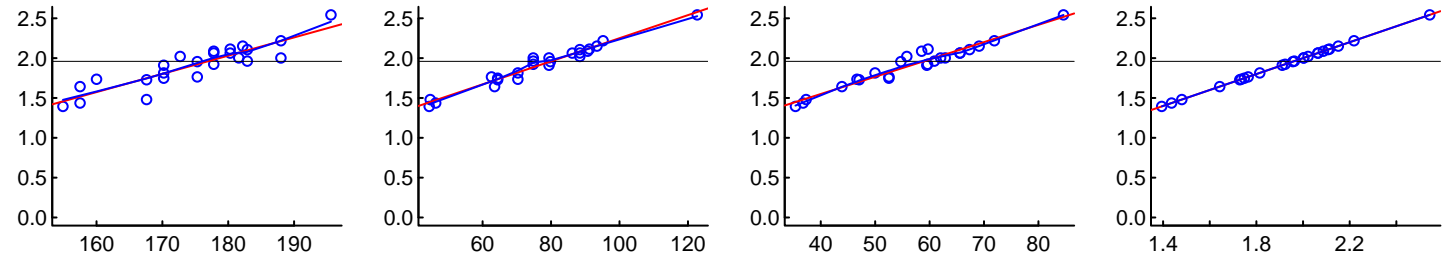
WT



LBM



BSA



HT

Weight

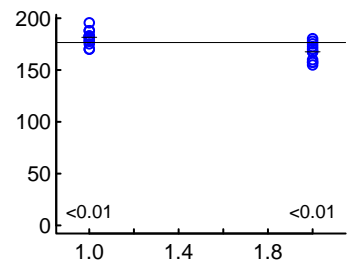
LBM

BSA

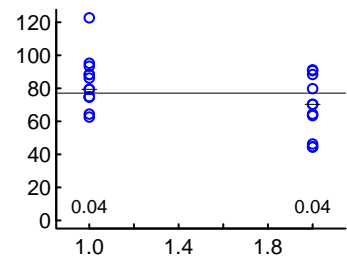
For categorical covariates, P values compare that value to all other values by t test
Red: linear regression; Blue: smoother; Black: median; r and P values: linear regression

"Control.Marsh.Simulation.txt" (8664.613) Post Hoc Value vs. Covariates

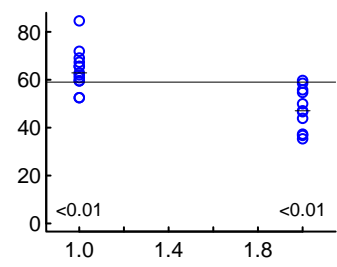
HT



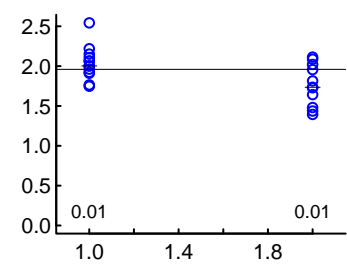
WT



LBM



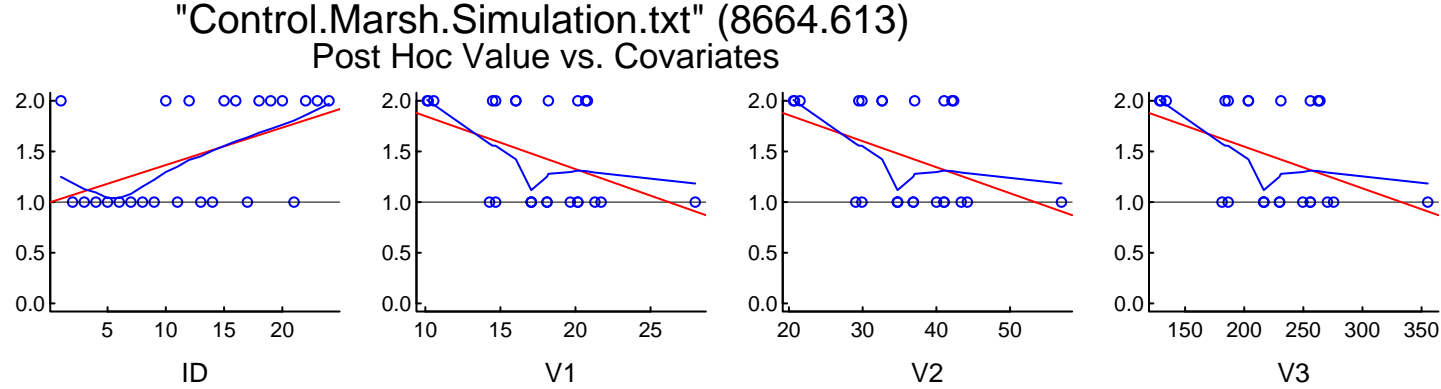
BSA



Gender (M=1; F=2)

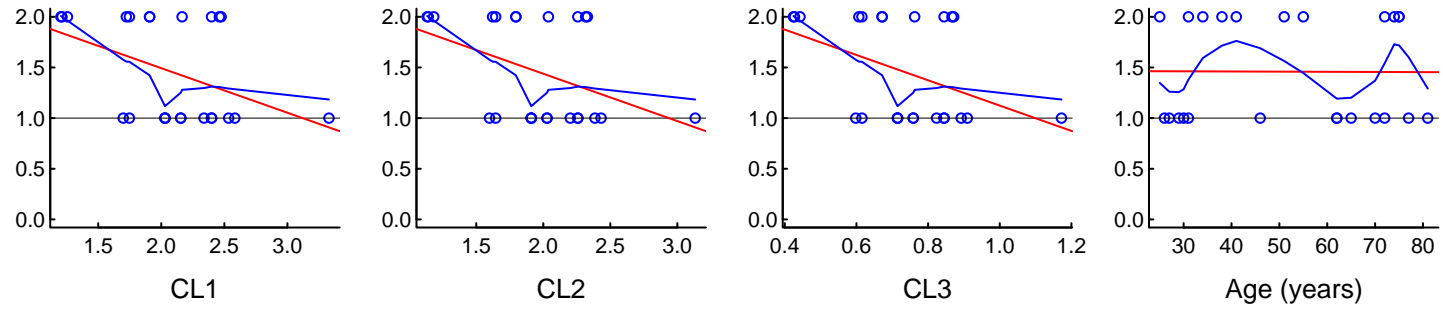
For categorical covariates, P values compare that value to all other values by t test
Red: linear regression; Blue: smoother; Black: median; r and P values: linear regression

M1F2



"Control.Marsh.Simulation.txt" (8664.613) Post Hoc Value vs. Covariates

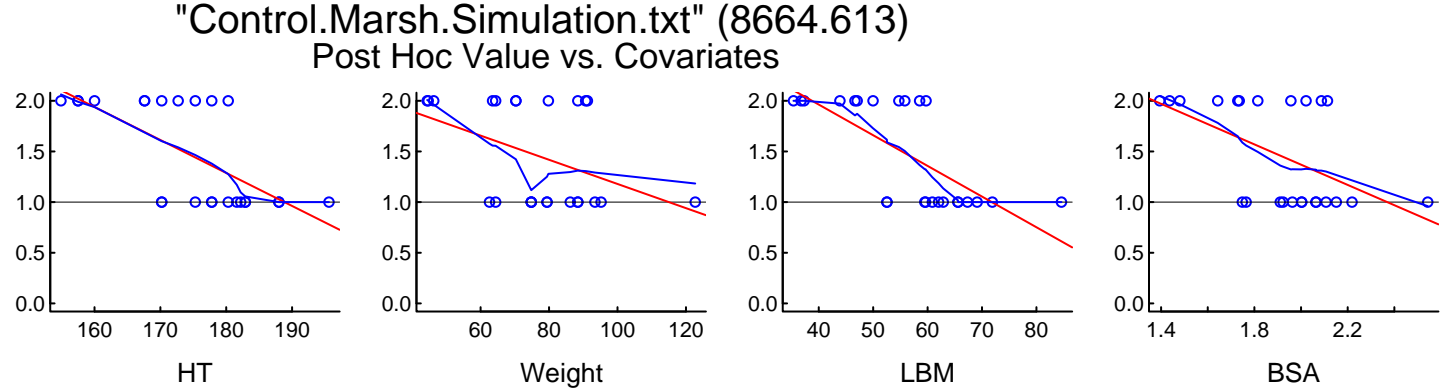
M1F2



For categorical covariates, P values compare that value to all other values by t test
Red: linear regression; Blue: smoother; Black: median; r and P values: linear regression

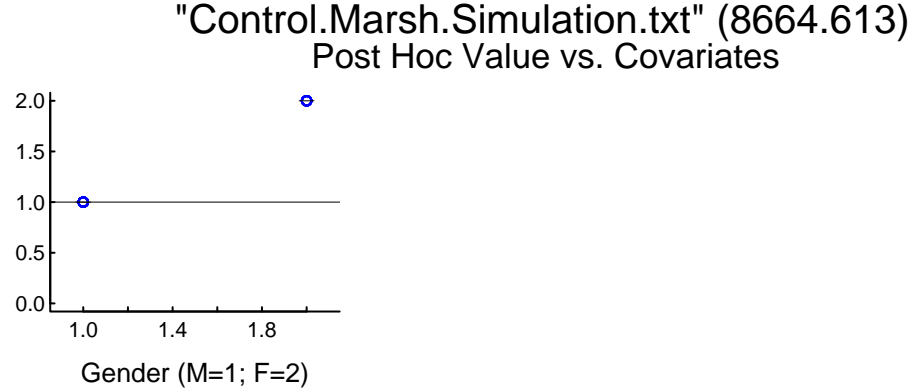
For categorical covariates, P values compare that value to all other values by t test
Red: linear regression; Blue: smoother; Black: median; r and P values: linear regression

M1F2



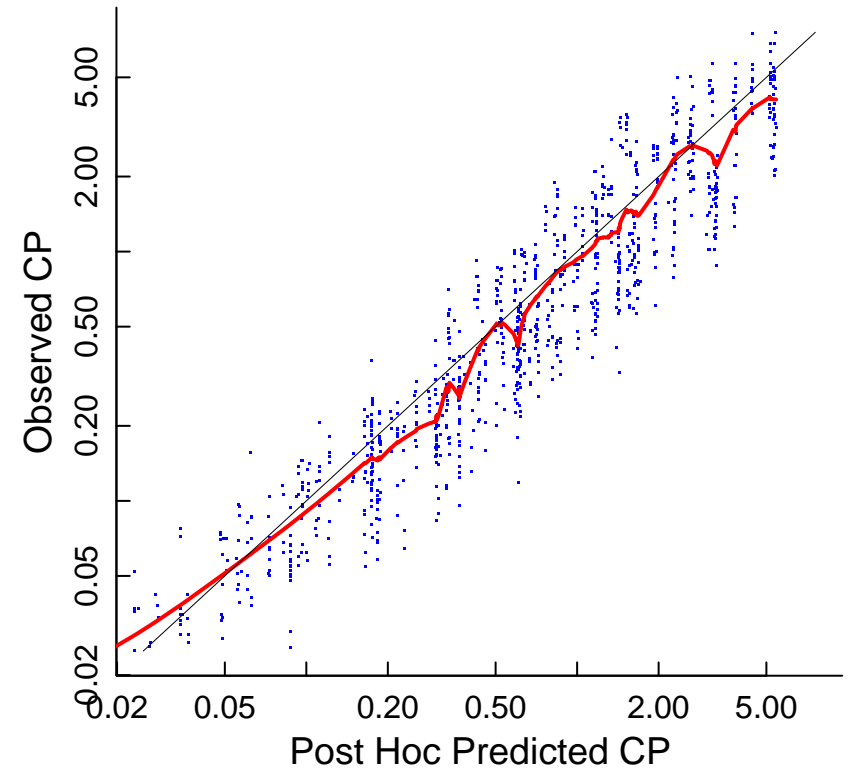
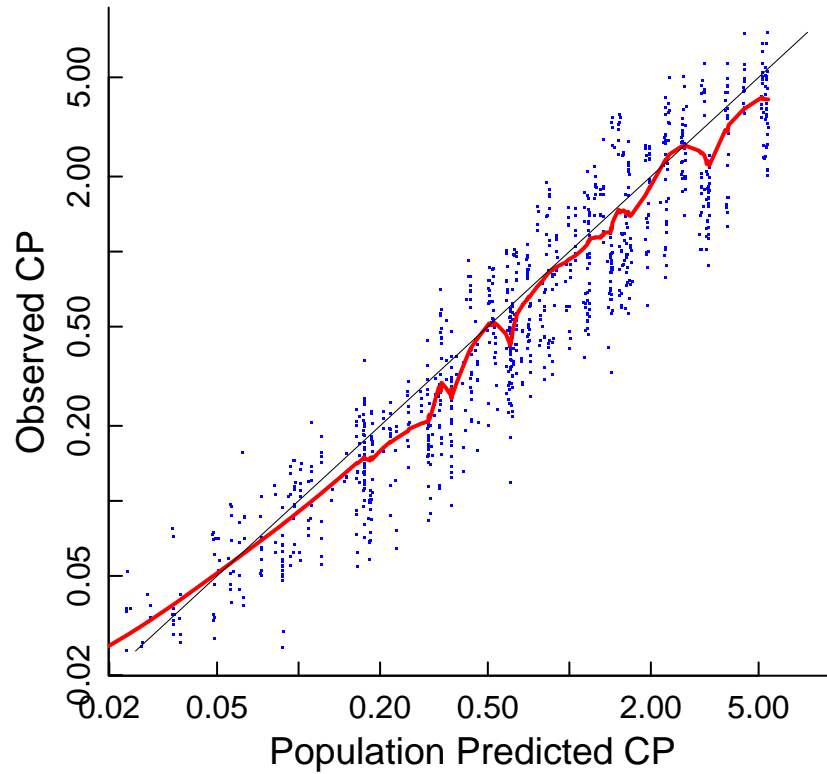
For categorical covariates, P values compare that value to all other values by t test
Red: linear regression; Blue: smoother; Black: median; r and P values: linear regression

M1F2



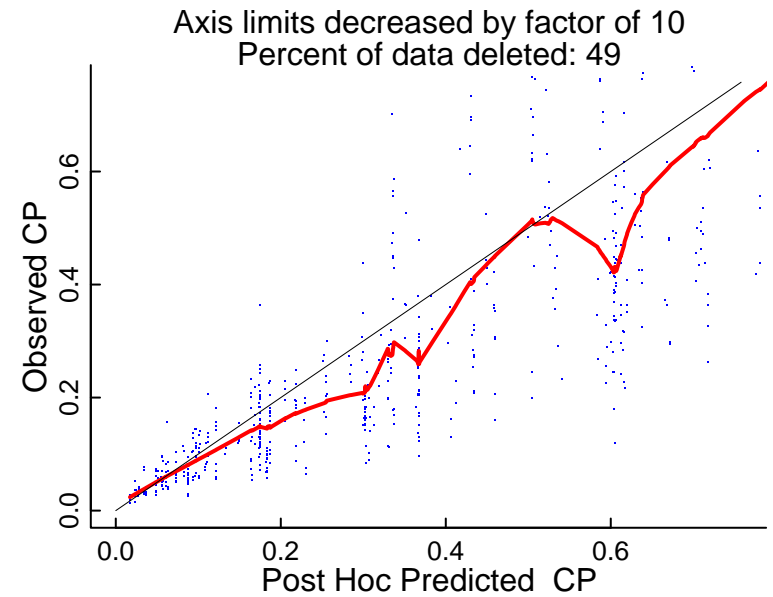
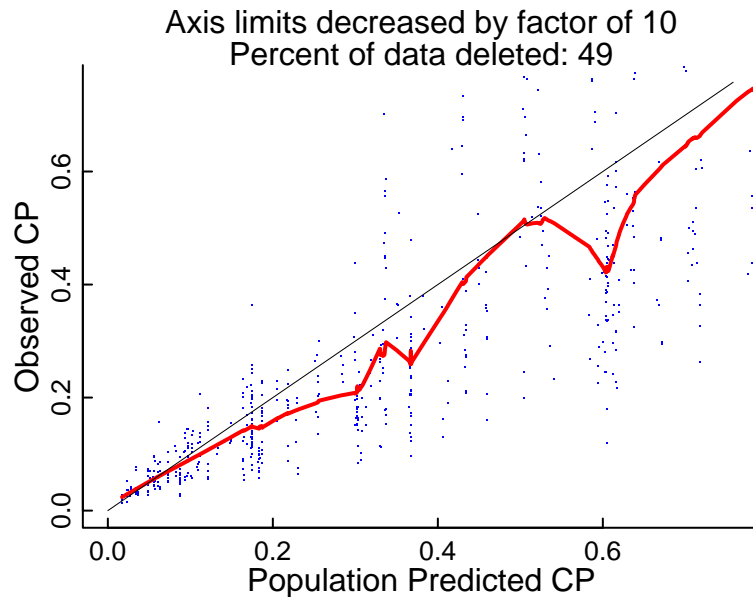
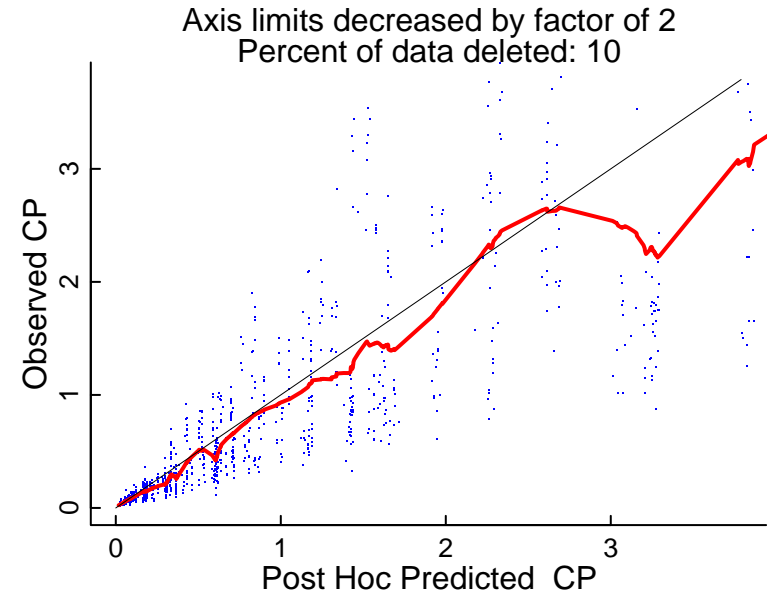
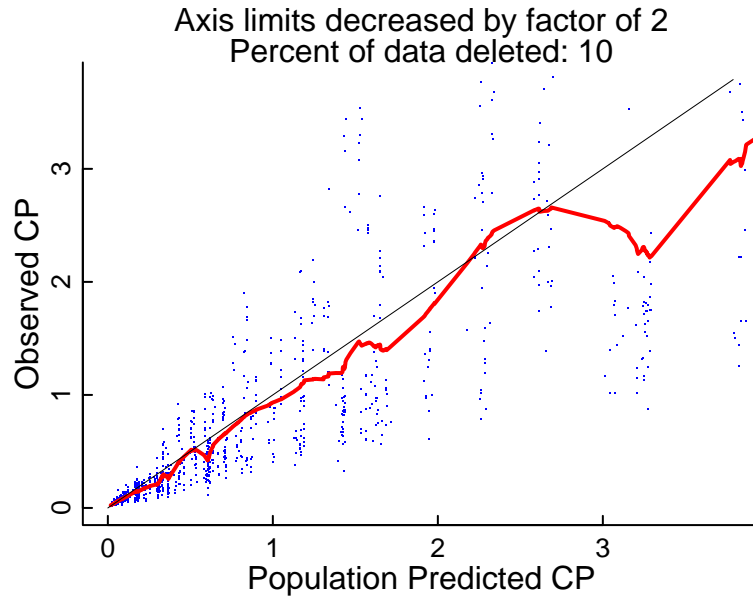
Goodness of fit

Black: line of unity; Red: smoother

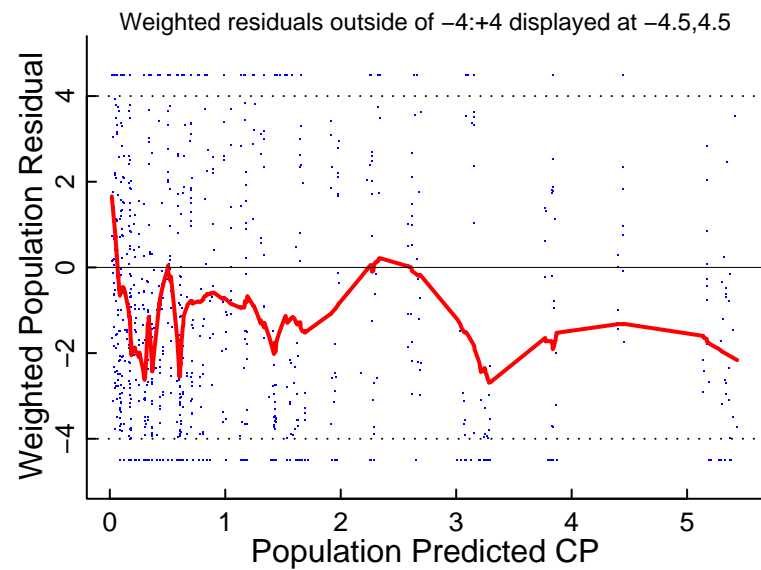
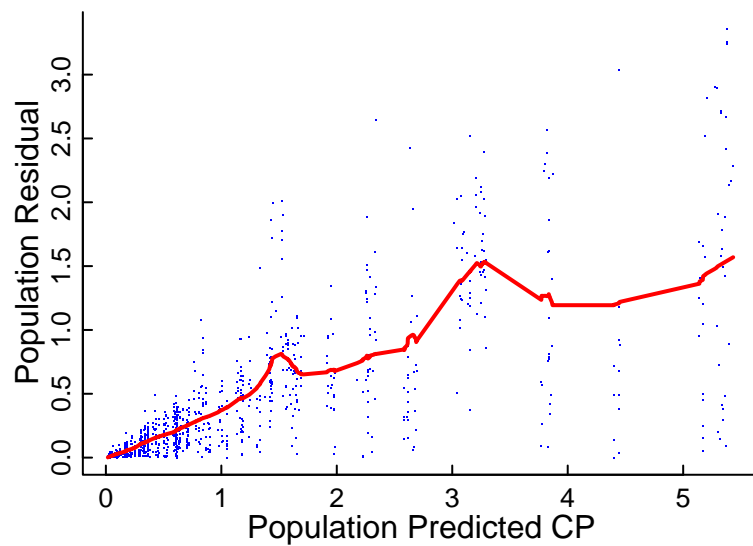
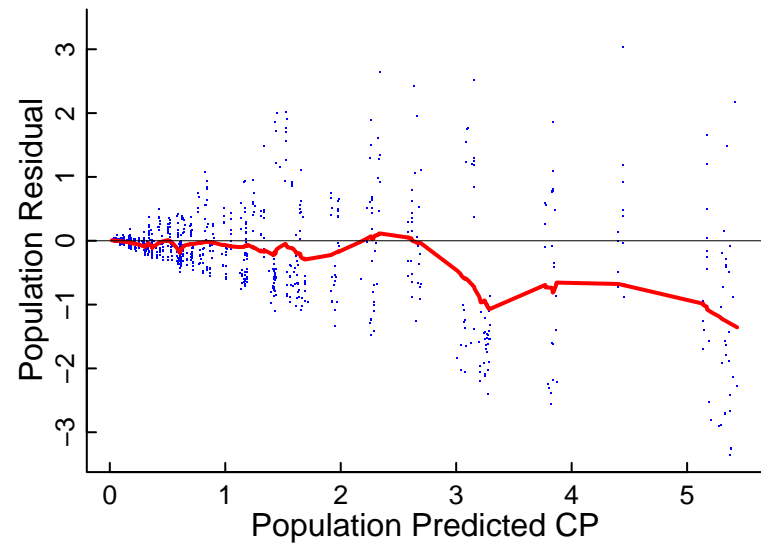
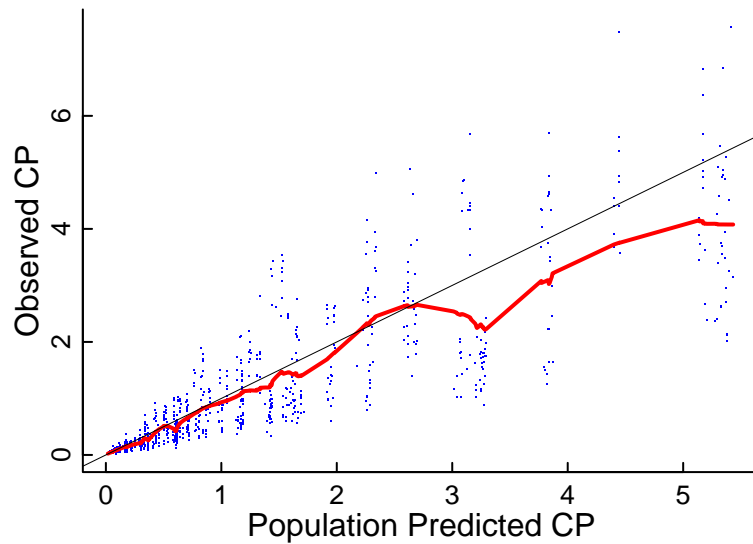


"Control.Marsh.Simulation.txt" (8664.613)

Goodness of fit: X and Y axes truncated

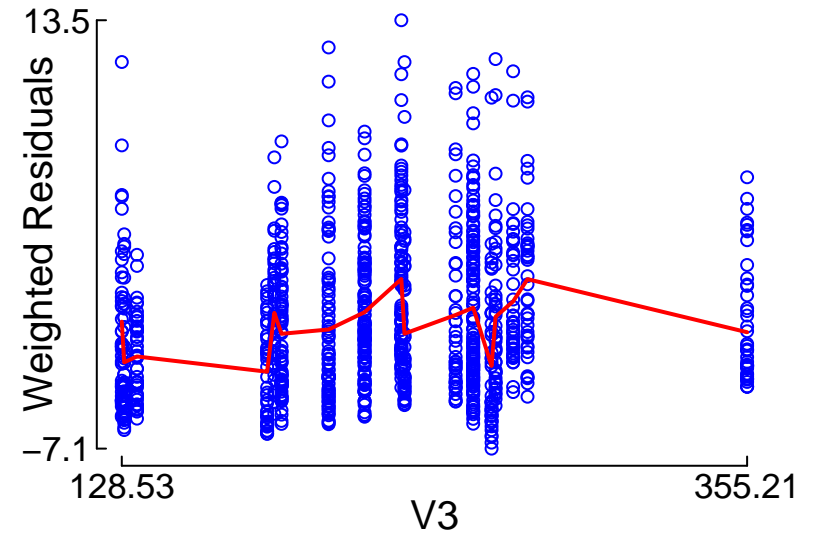
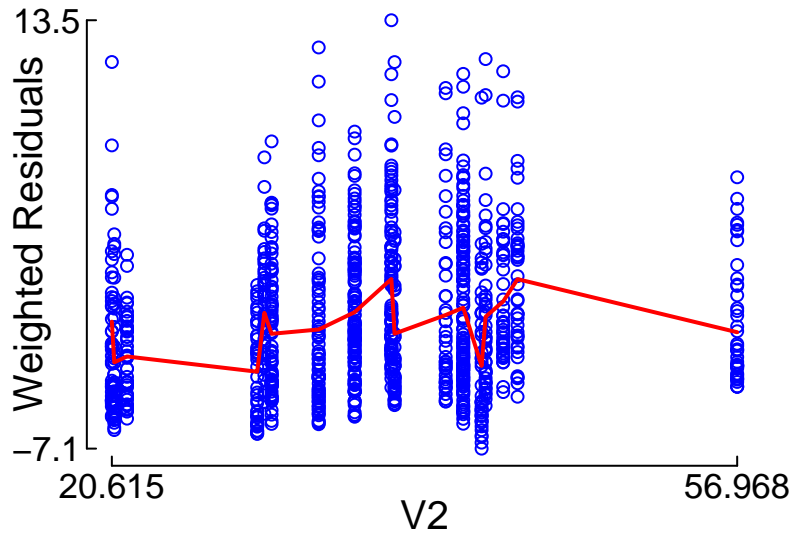
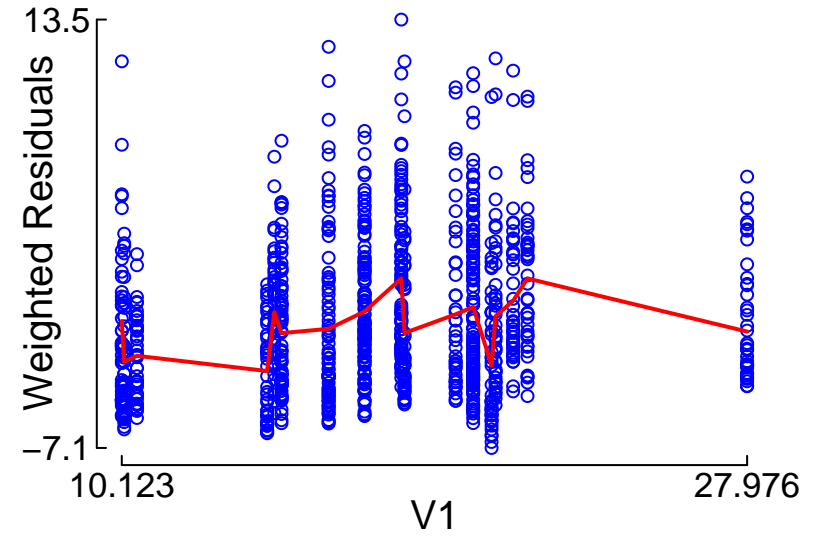
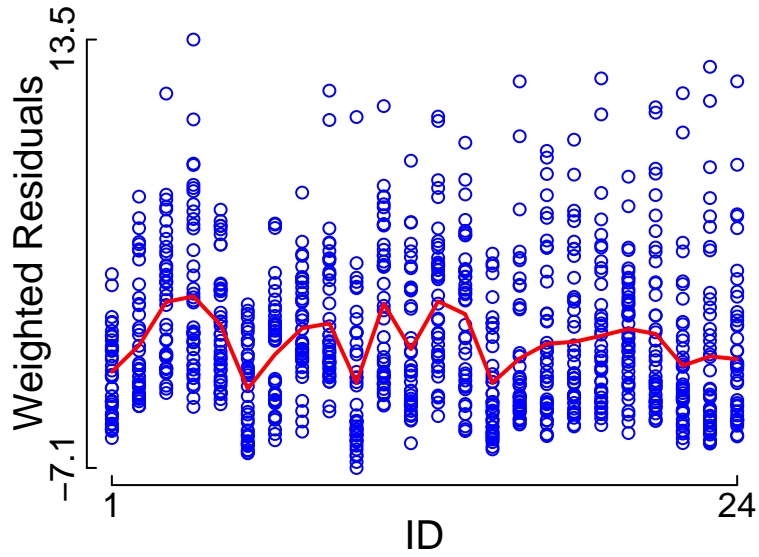


Black: line of unity; Red: smoother



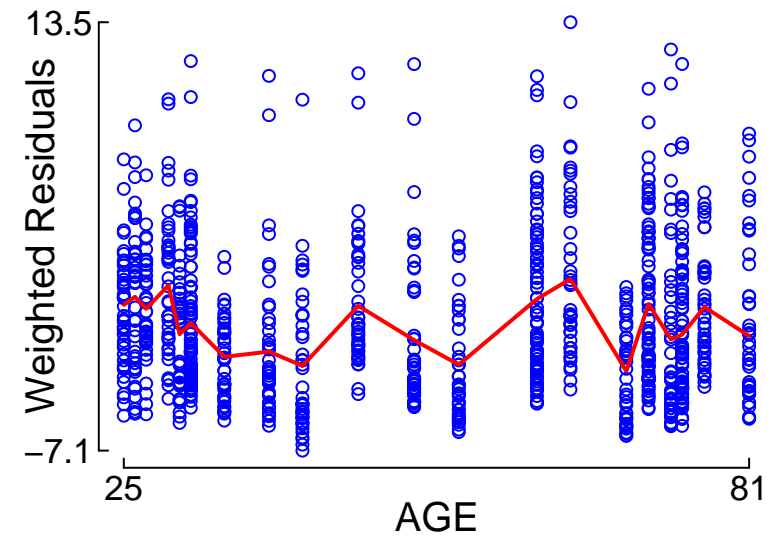
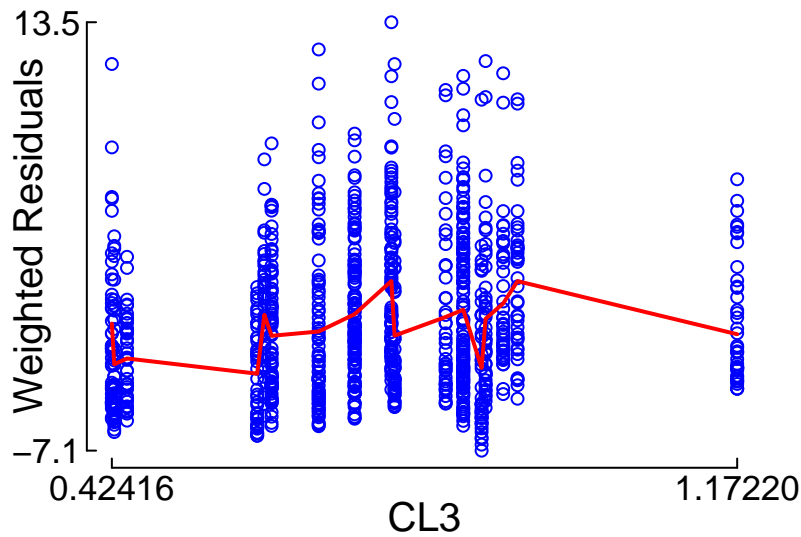
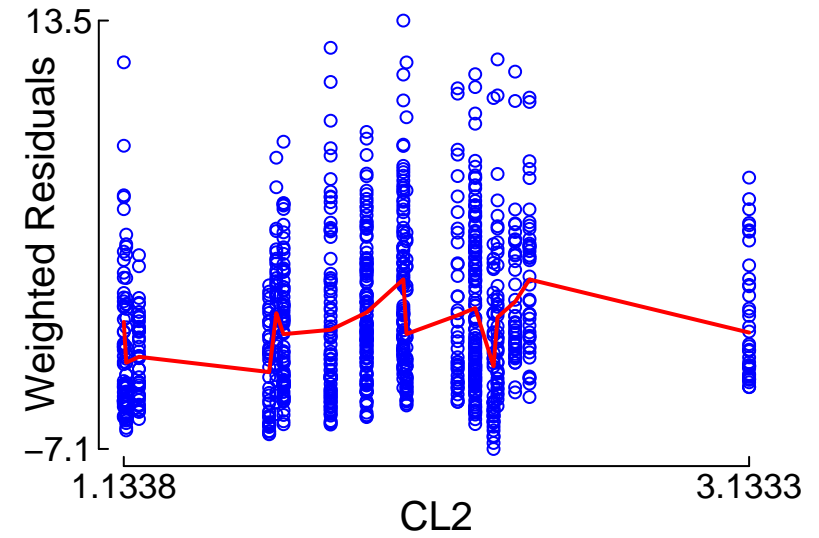
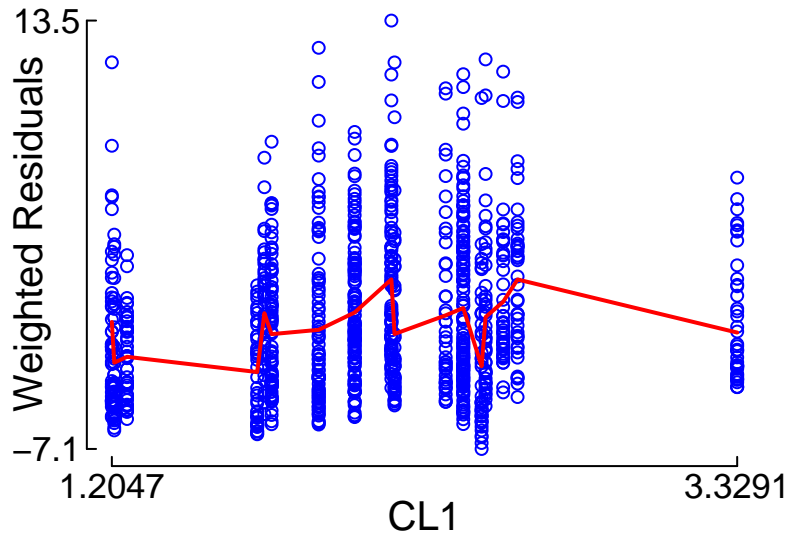
Red: smoother

"Control.Marsh.Simulation.txt" (8664.613) vs. Weighted Residuals



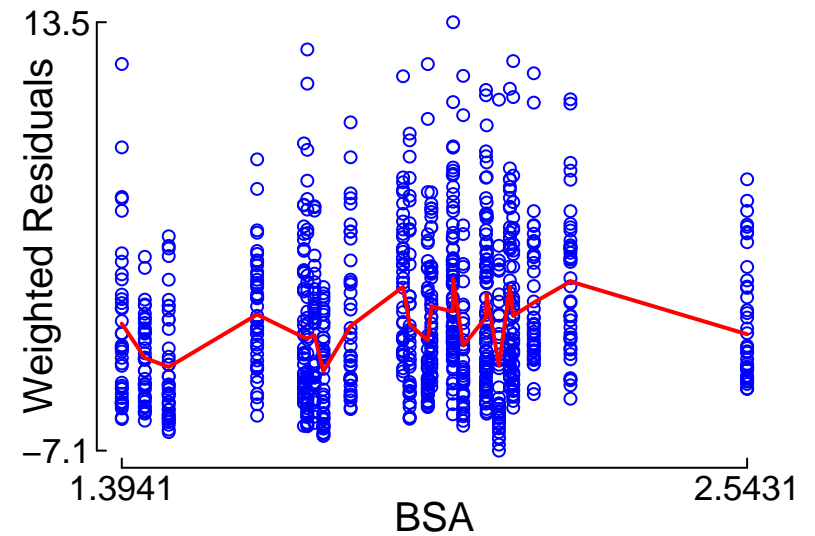
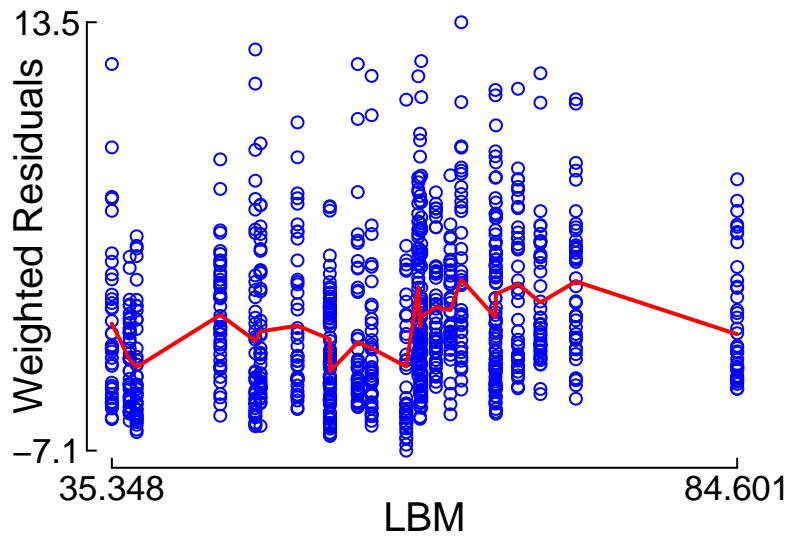
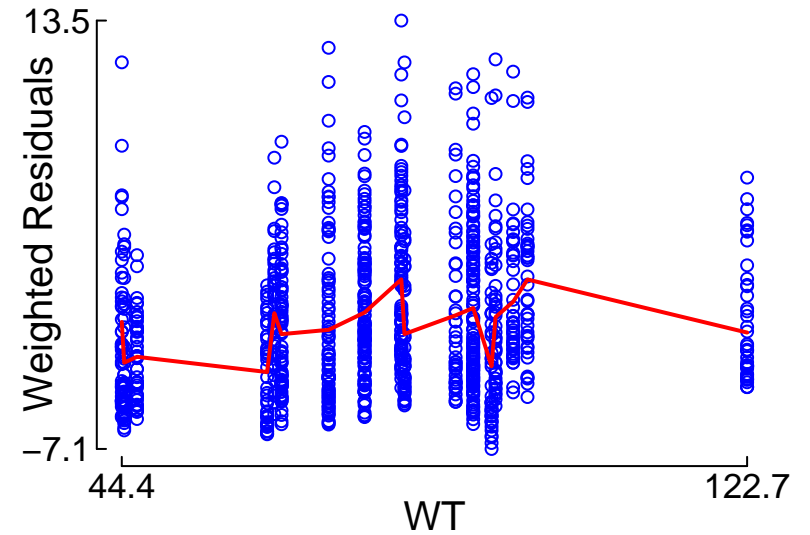
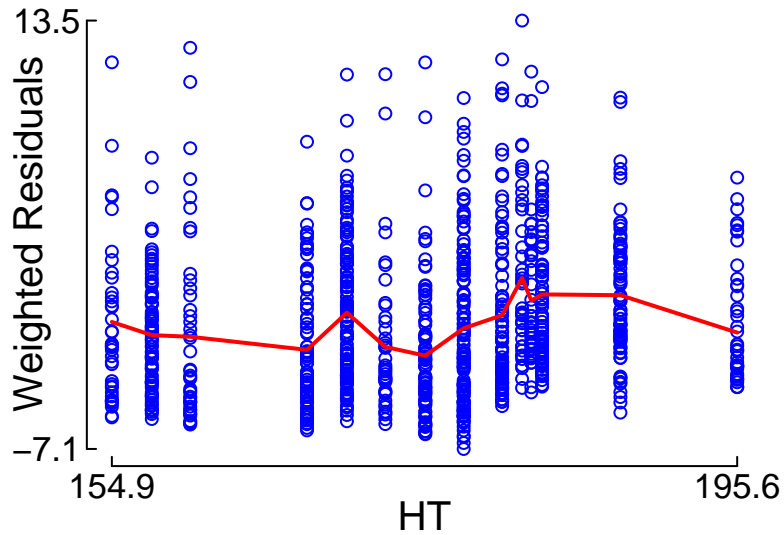
Red: smoother

"Control.Marsh.Simulation.txt" (8664.613) vs. Weighted Residuals



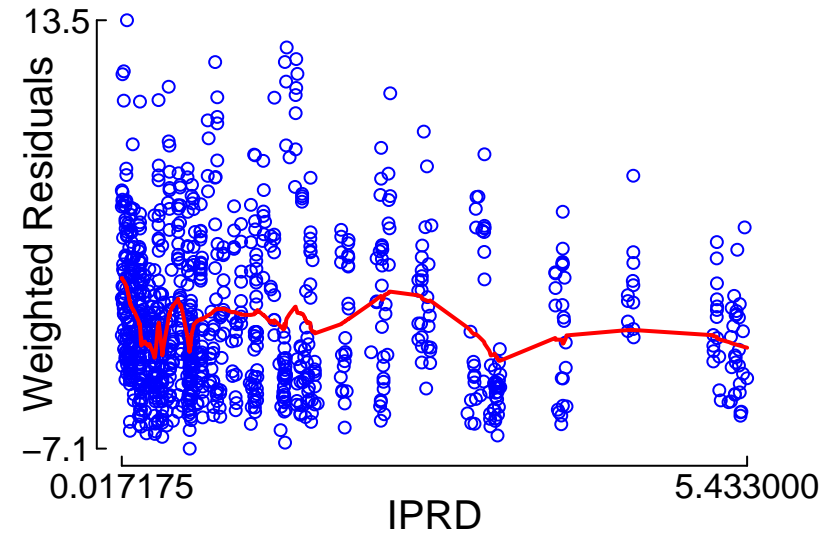
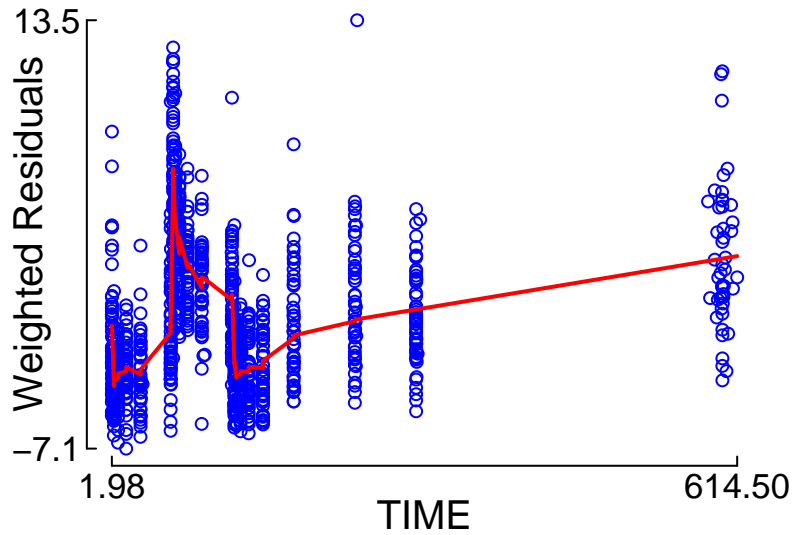
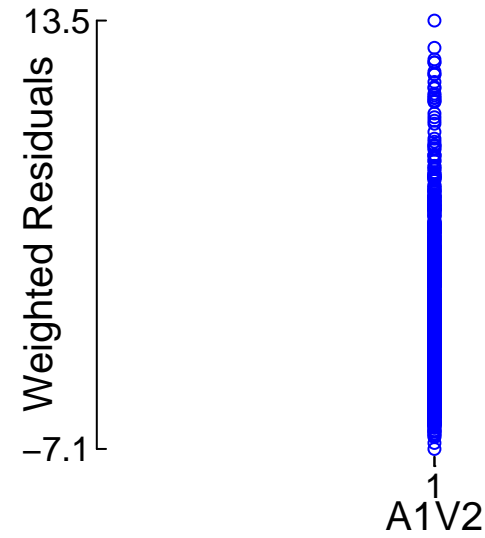
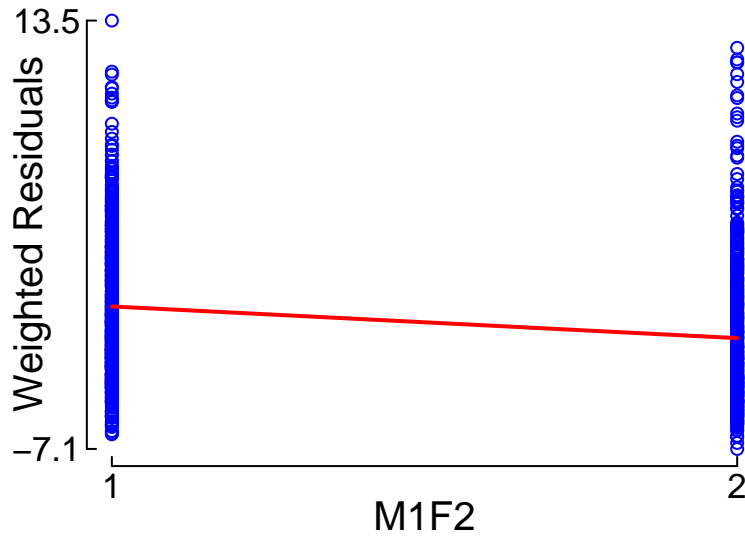
Red: smoother

"Control.Marsh.Simulation.txt" (8664.613) vs. Weighted Residuals



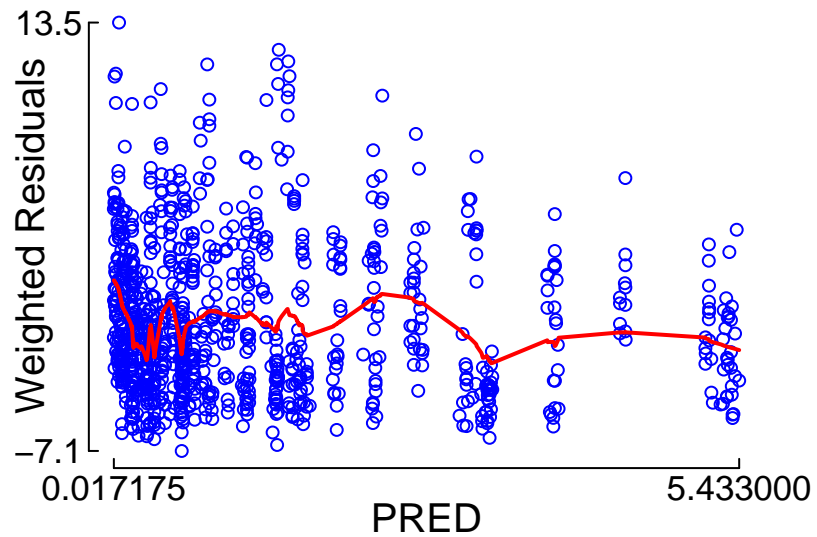
Red: smoother

"Control.Marsh.Simulation.txt" (8664.613) vs. Weighted Residuals



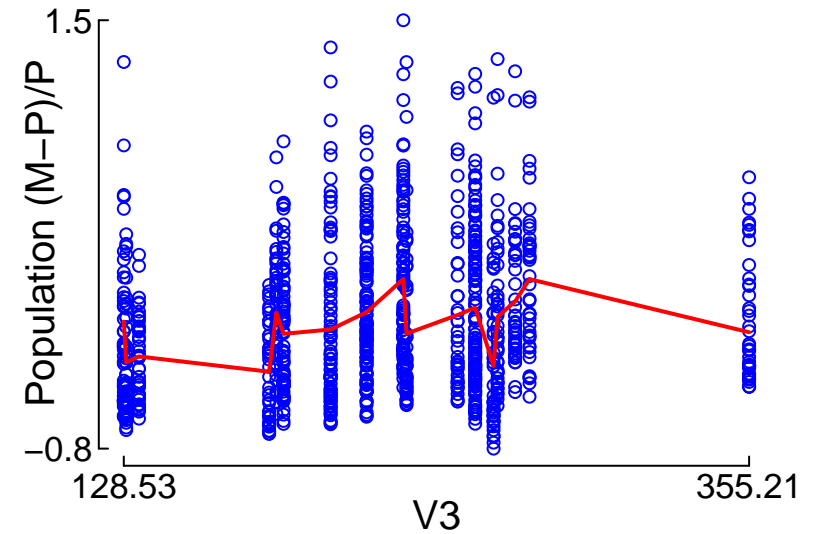
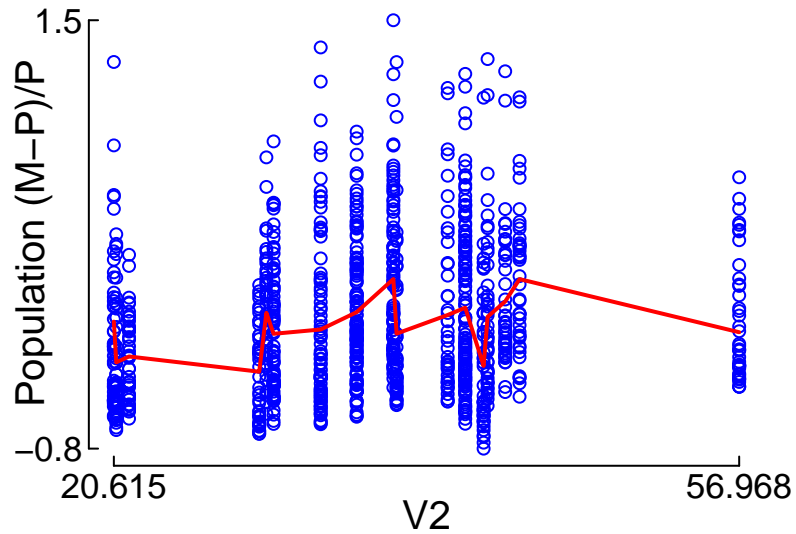
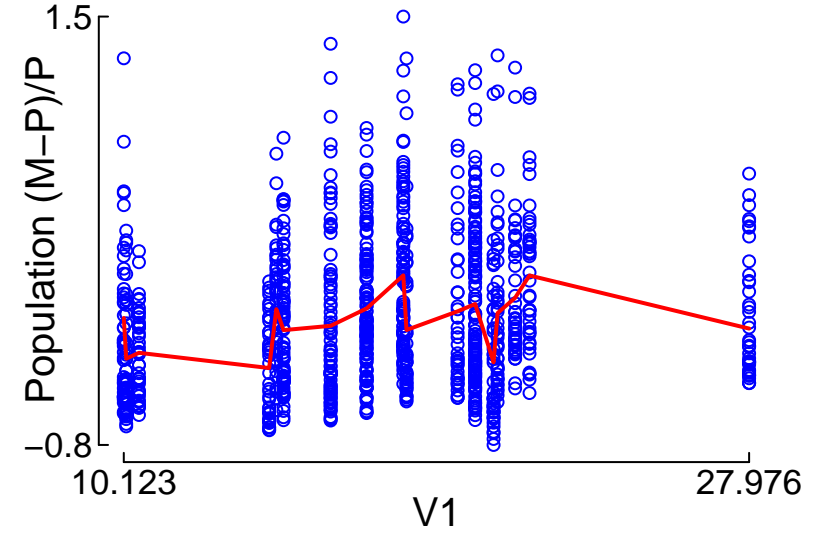
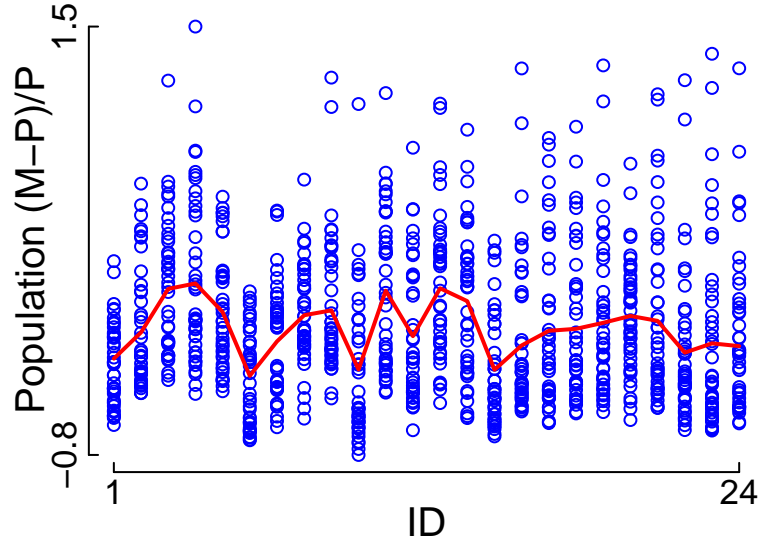
Red: smoother

"Control.Marsh.Simulation.txt" (8664.613)
vs. Weighted Residuals



Red: smoother

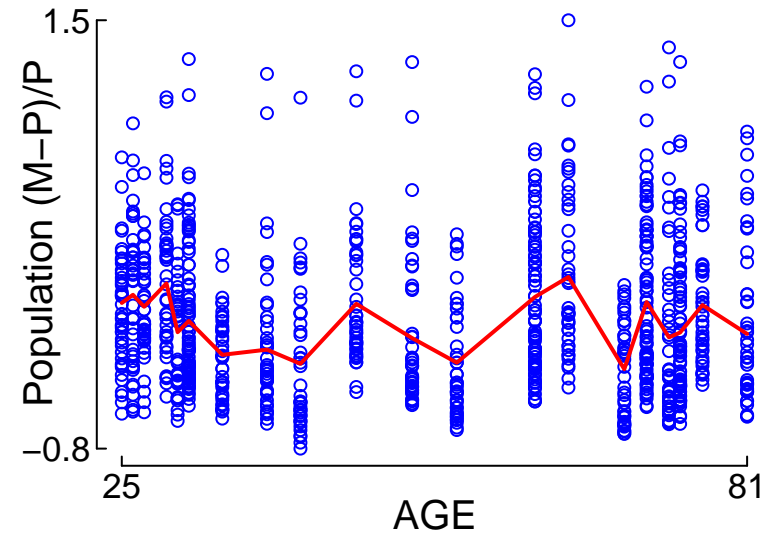
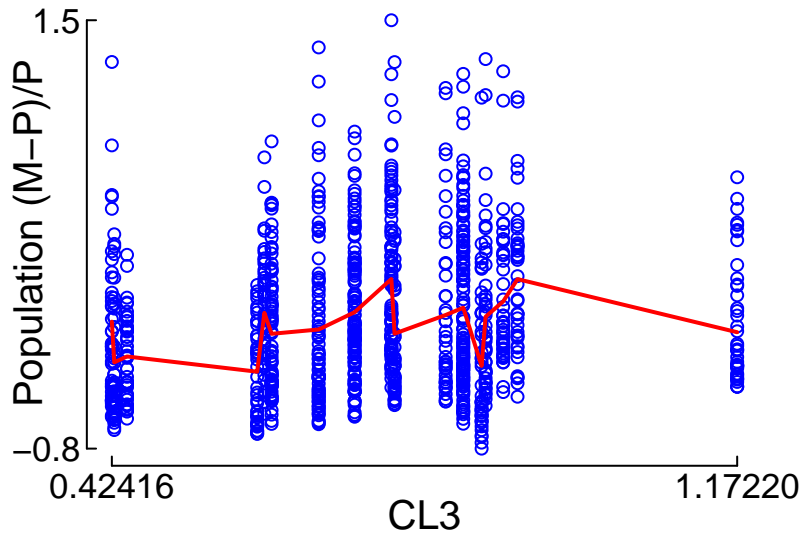
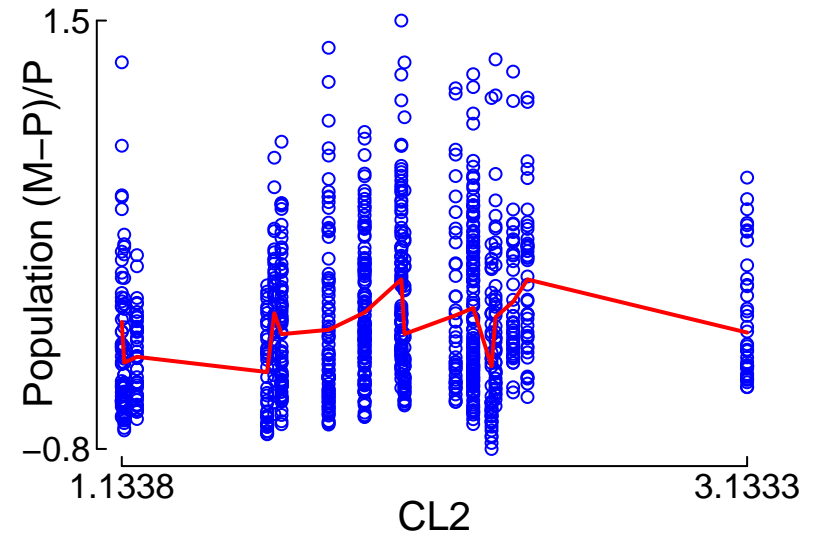
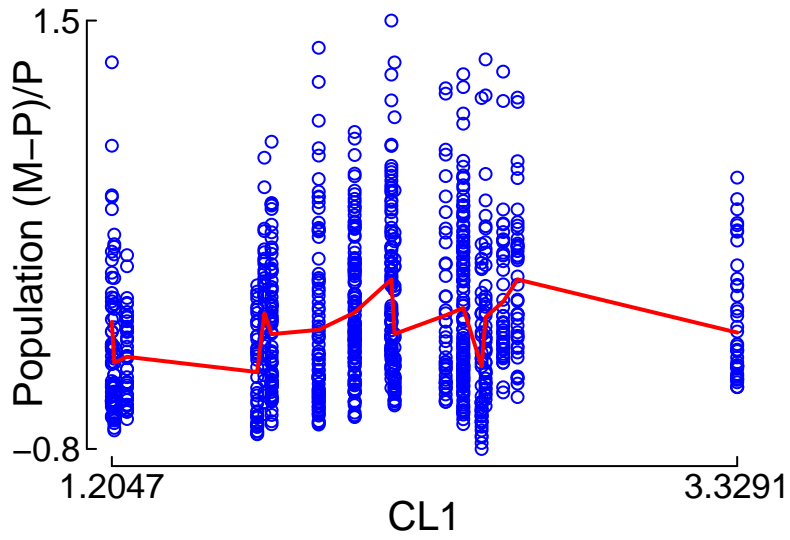
"Control.Marsh.Simulation.txt" (8664.613)
vs. Population (M-P)/P



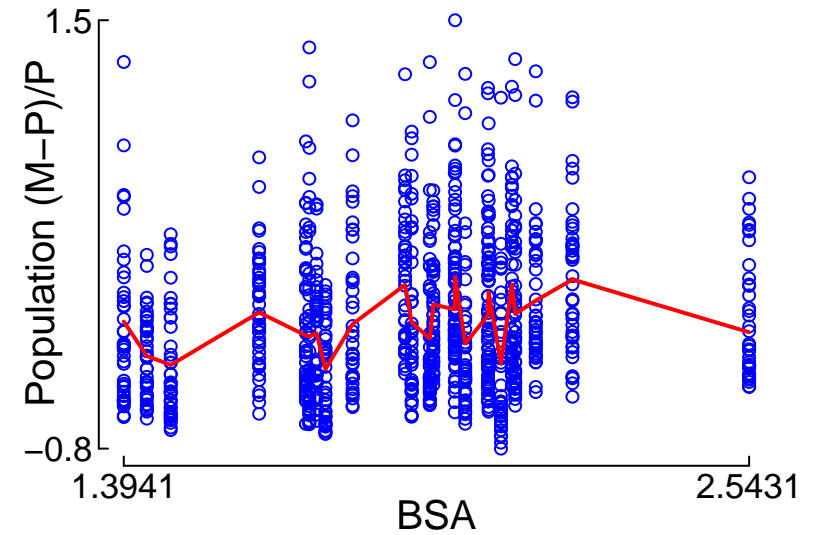
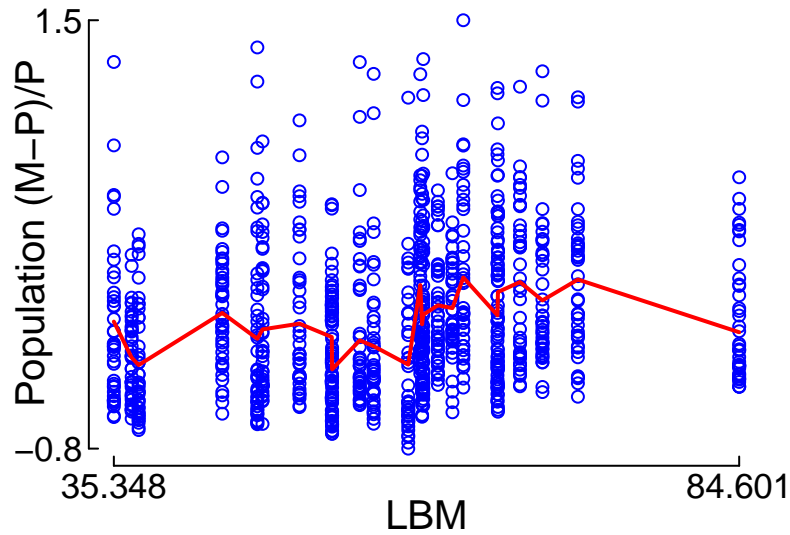
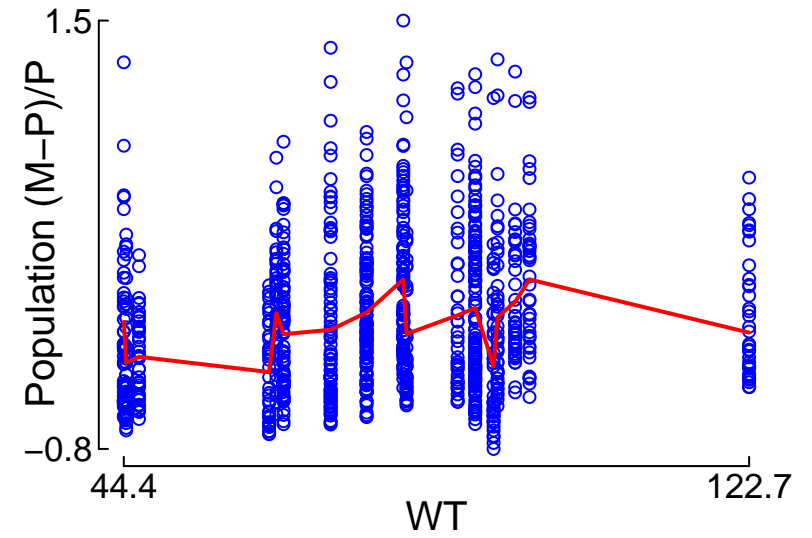
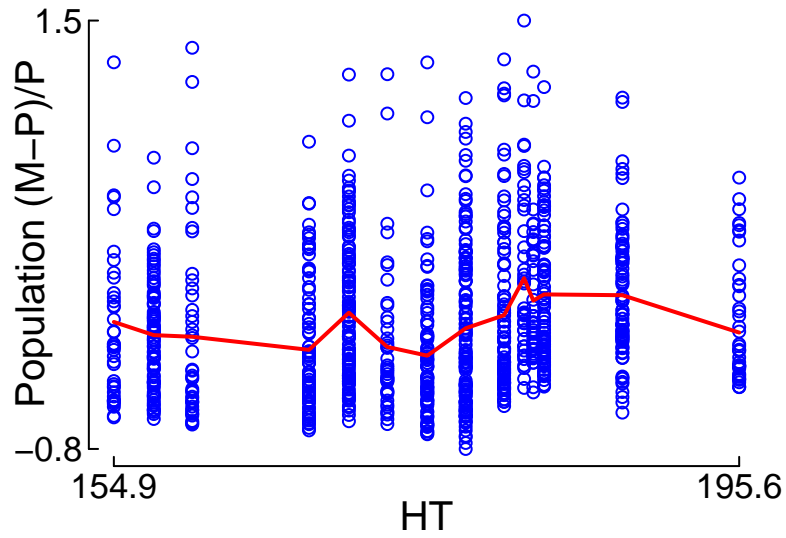
Red: smoother

"Control.Marsh.Simulation.txt" (8664.613) vs. Population (M-P)/P

Red: smoother

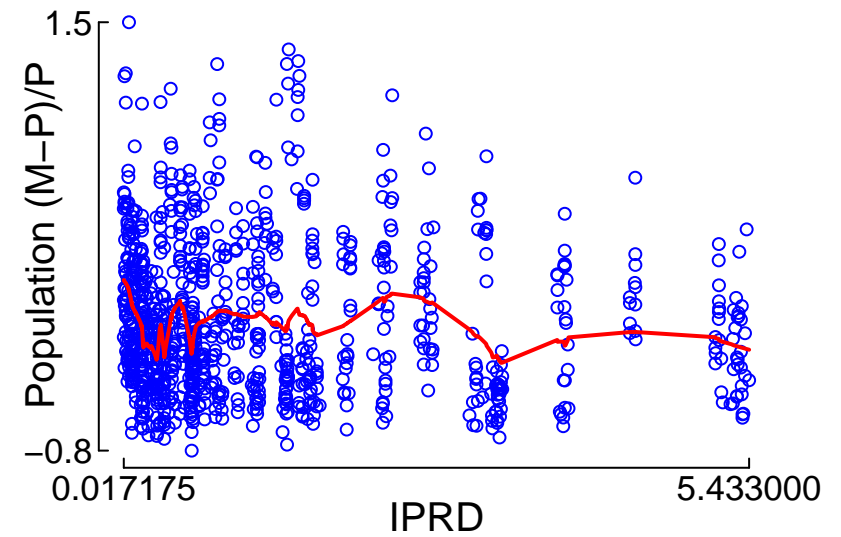
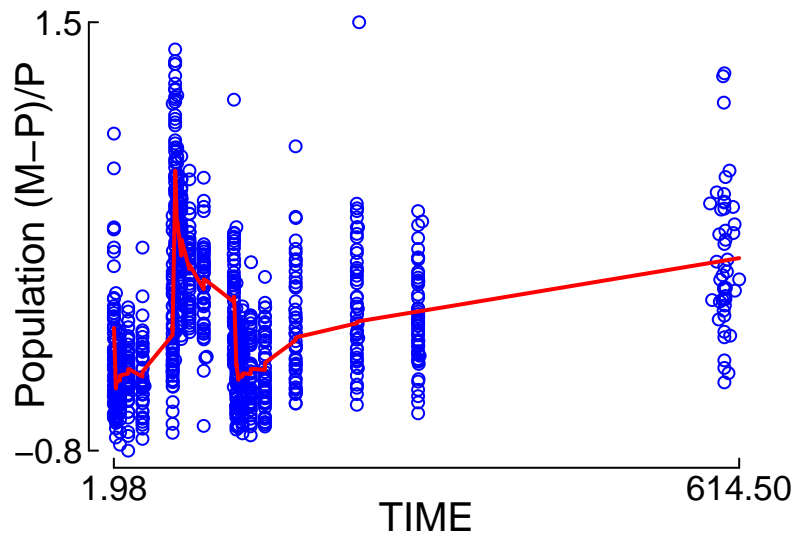
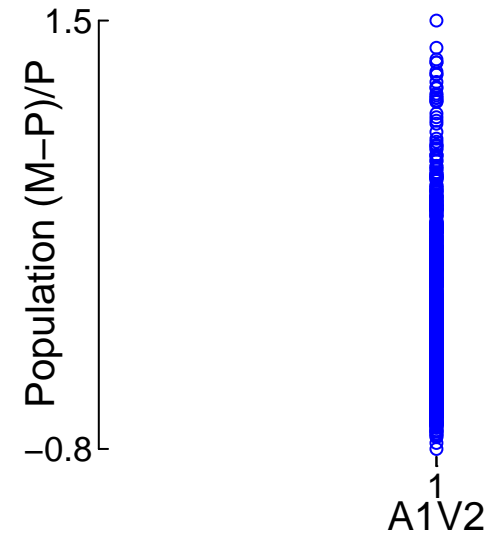
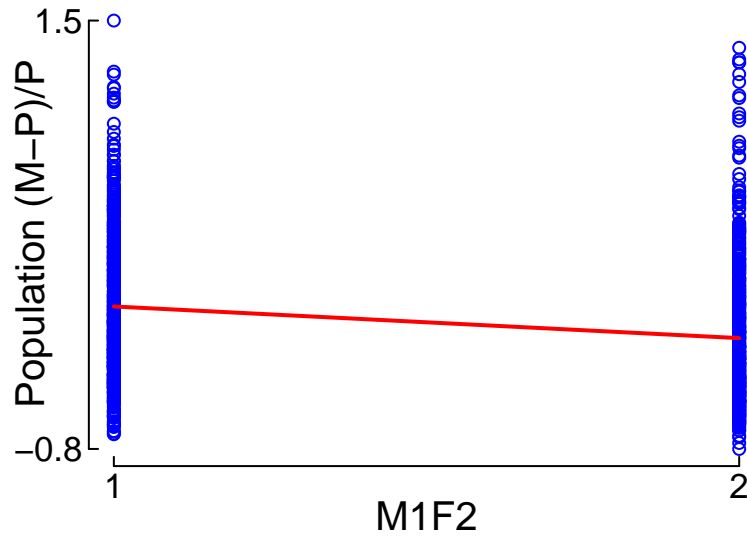


"Control.Marsh.Simulation.txt" (8664.613) vs. Population (M-P)/P



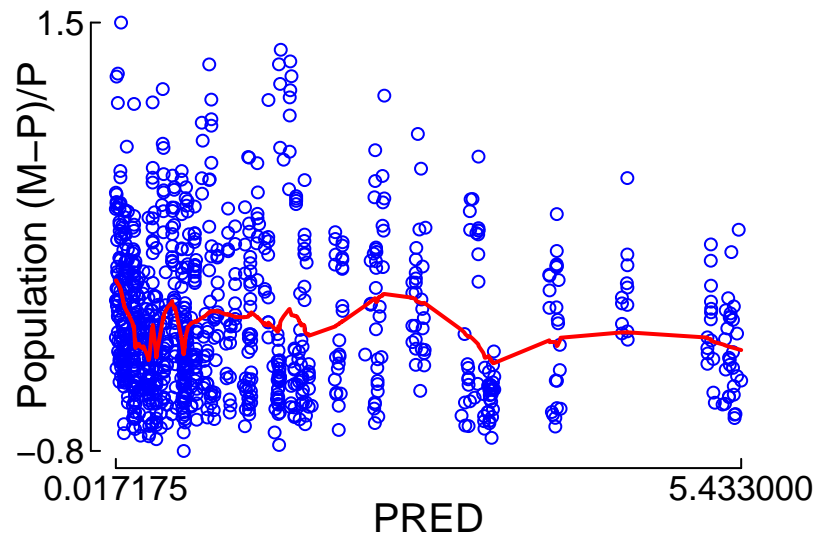
Red: smoother

"Control.Marsh.Simulation.txt" (8664.613) vs. Population (M-P)/P



Red: smoother

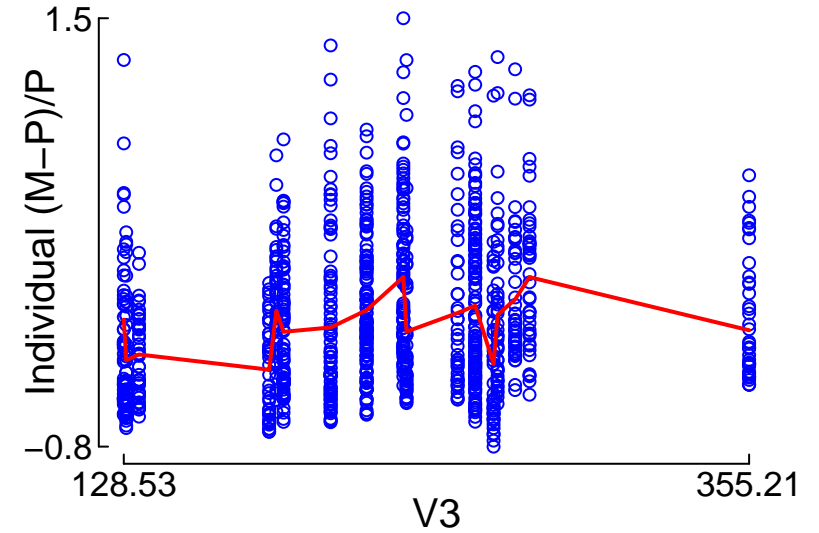
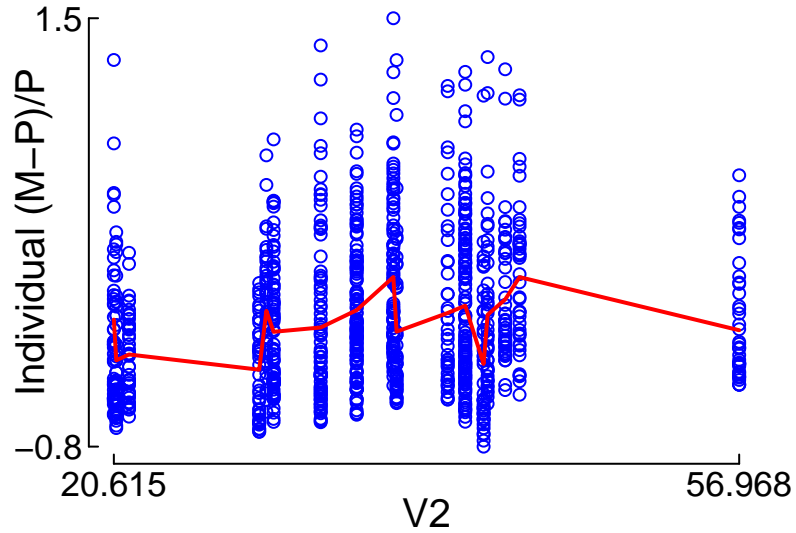
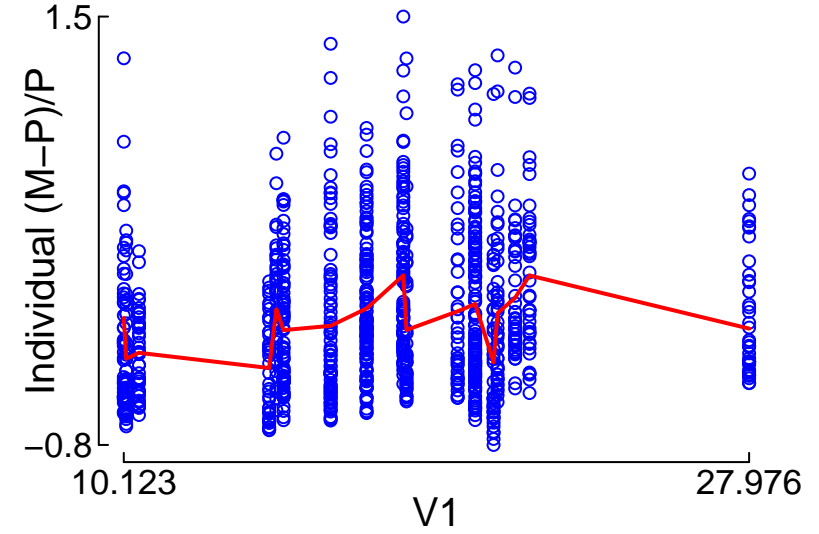
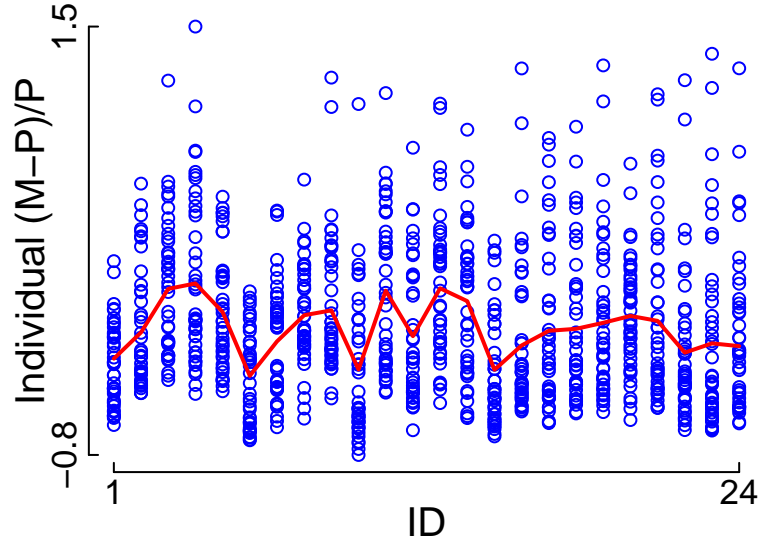
"Control.Marsh.Simulation.txt" (8664.613)
vs. Population (M-P)/P



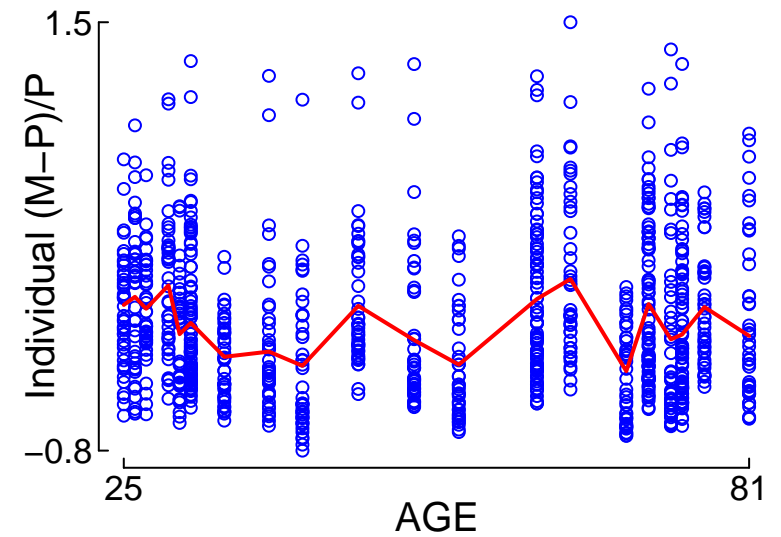
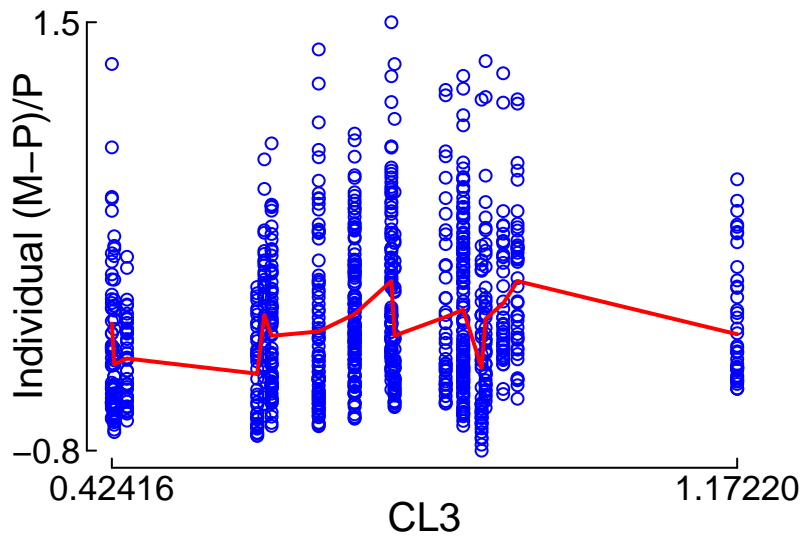
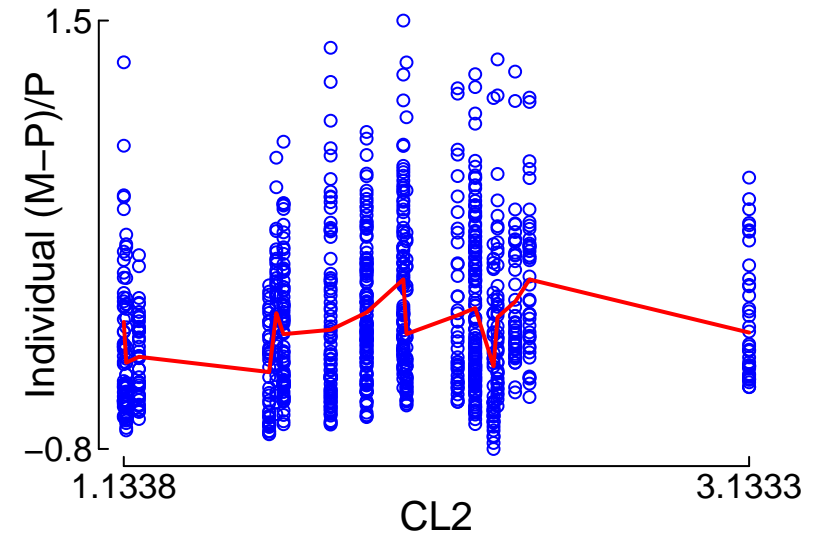
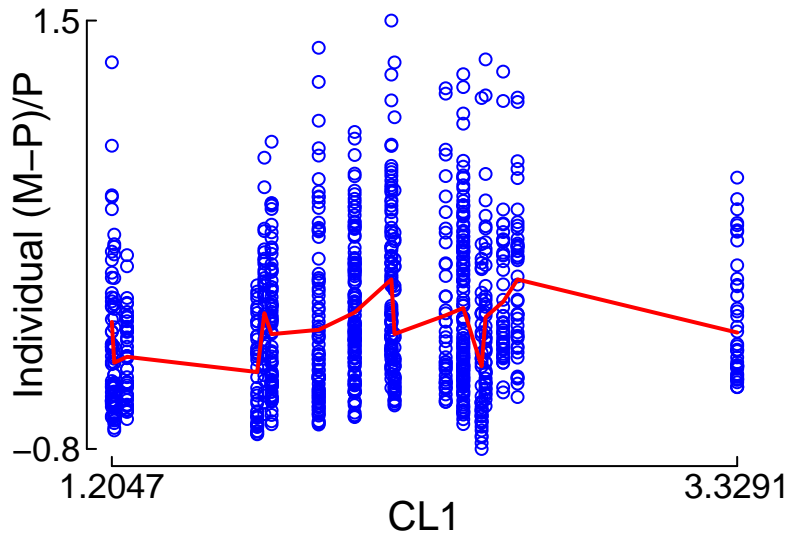
Red: smoother

"Control.Marsh.Simulation.txt" (8664.613)
vs. Individual (M-P)/P

Red: smoother

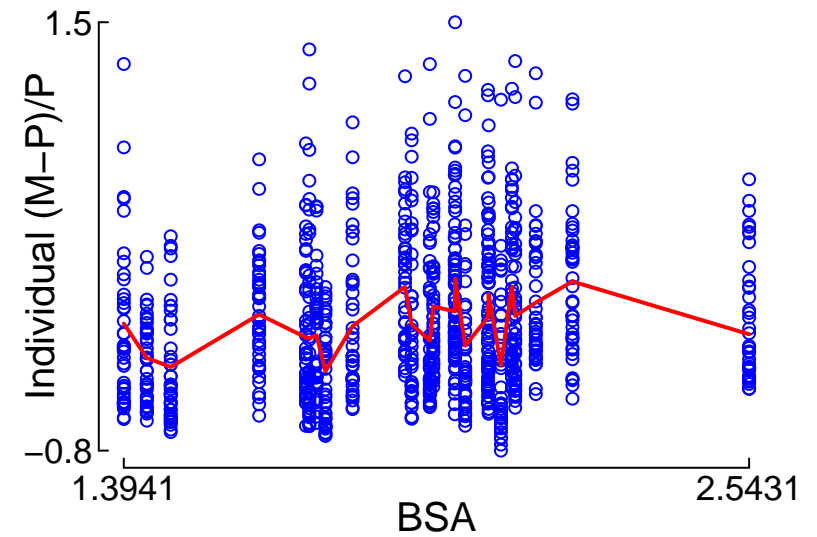
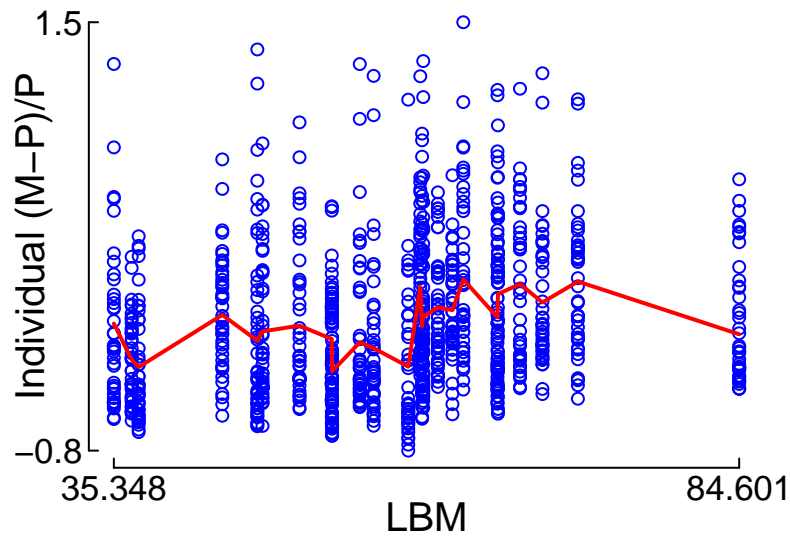
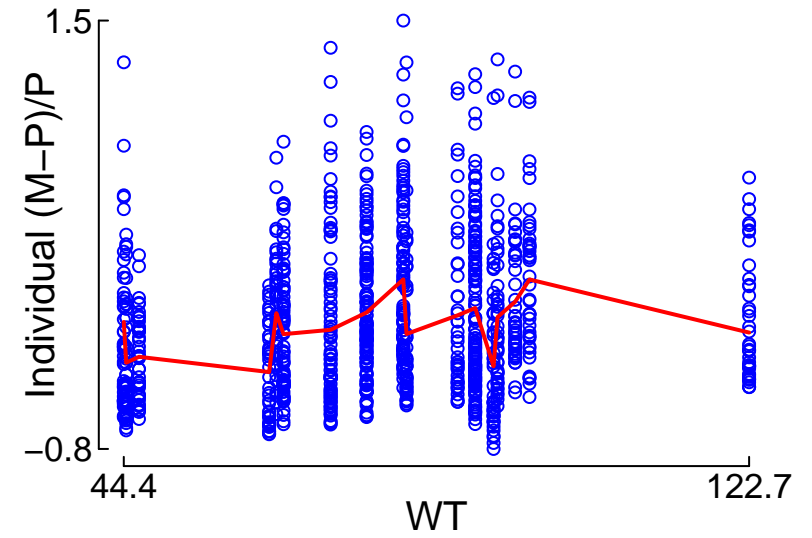
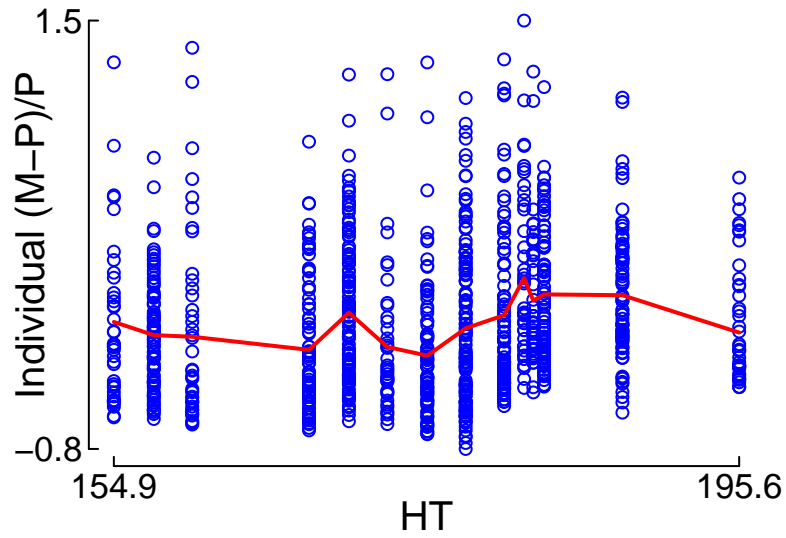


"Control.Marsh.Simulation.txt" (8664.613) vs. Individual (M-P)/P



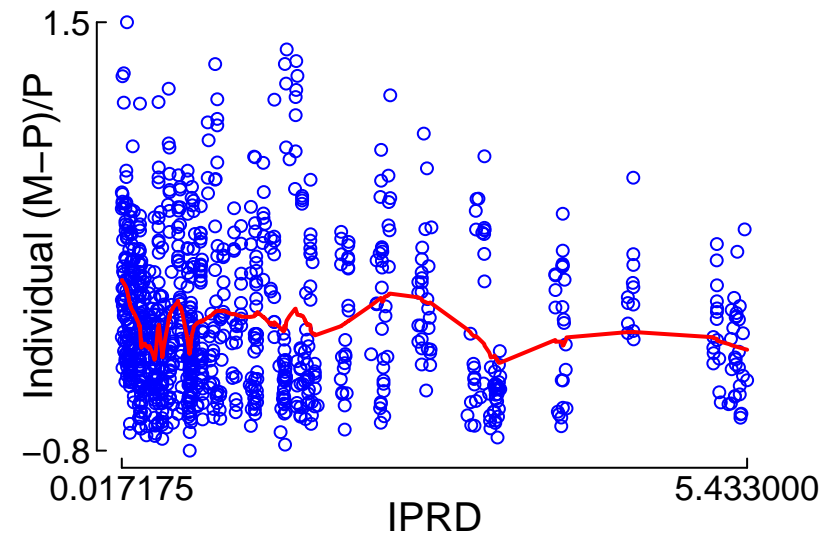
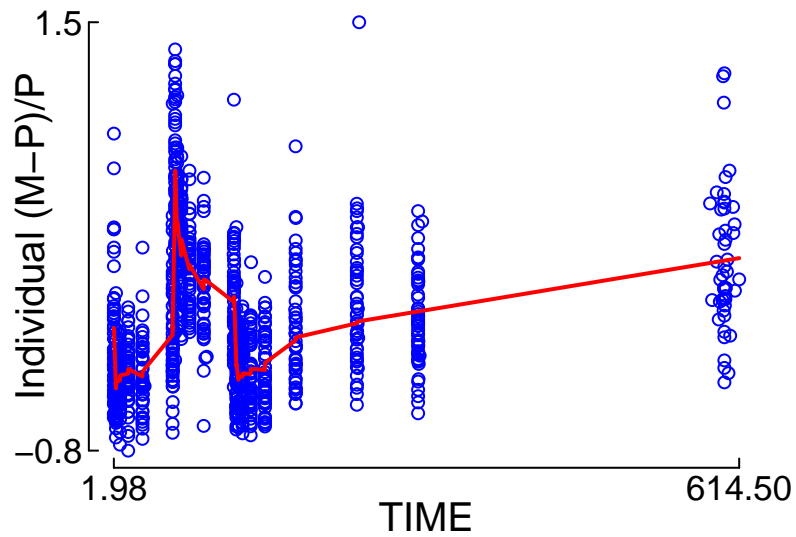
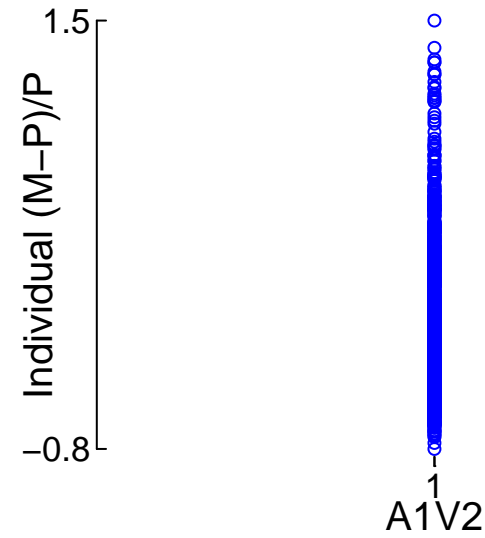
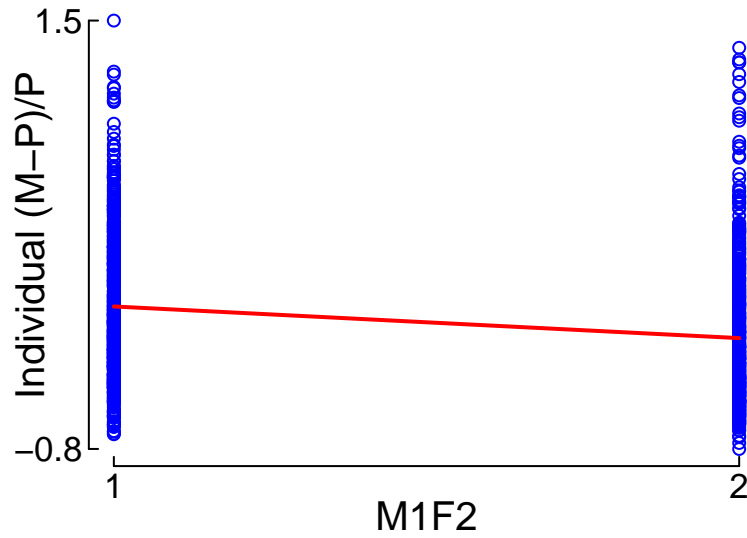
Red: smoother

"Control.Marsh.Simulation.txt" (8664.613)
vs. Individual (M-P)/P



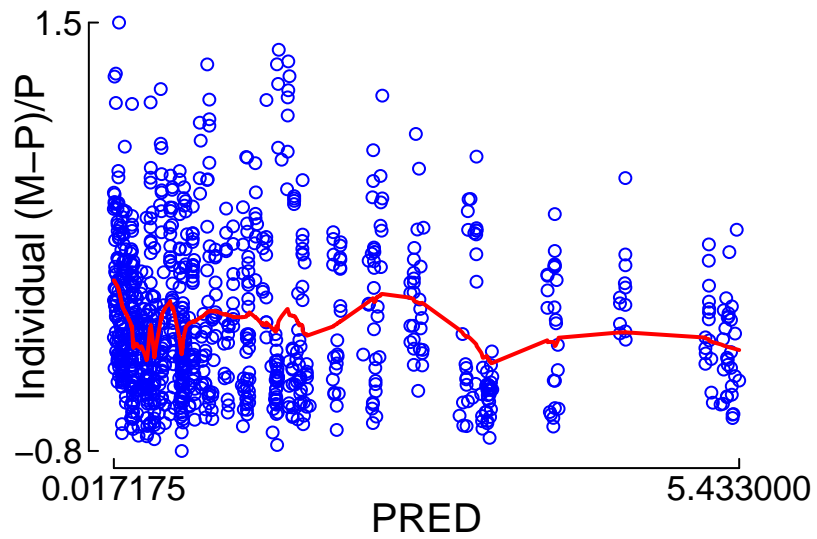
Red: smoother

"Control.Marsh.Simulation.txt" (8664.613)
vs. Individual (M-P)/P



Red: smoother

"Control.Marsh.Simulation.txt" (8664.613)
vs. Individual (M-P)/P



Red: smoother