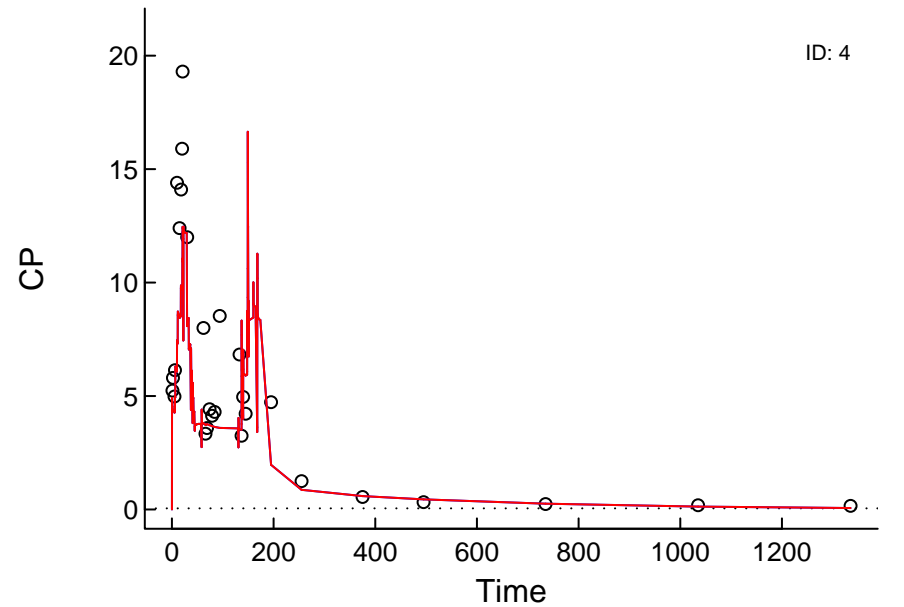
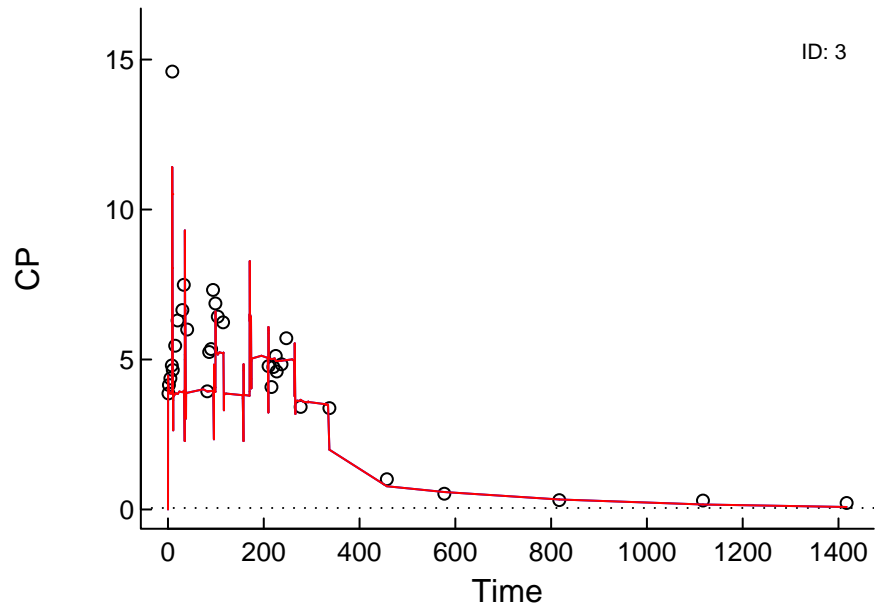
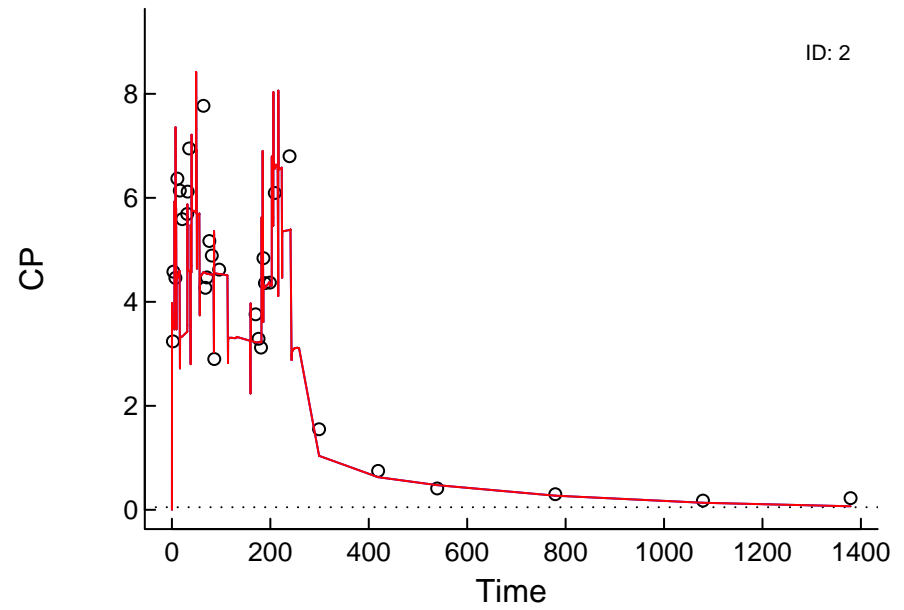
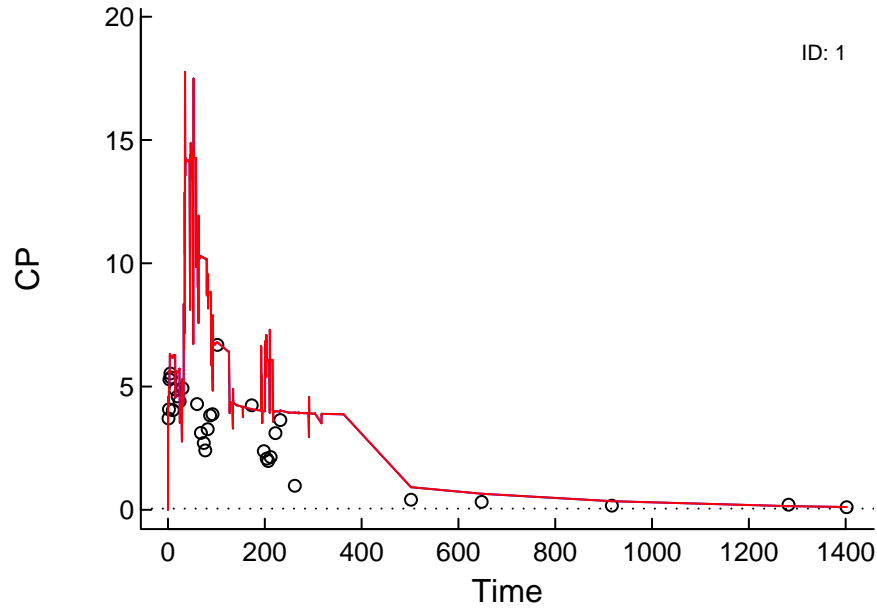


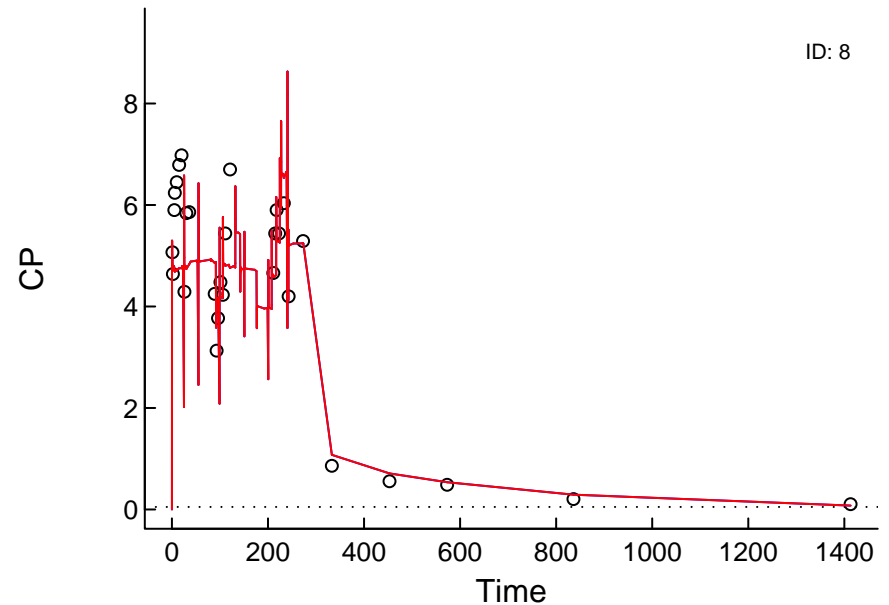
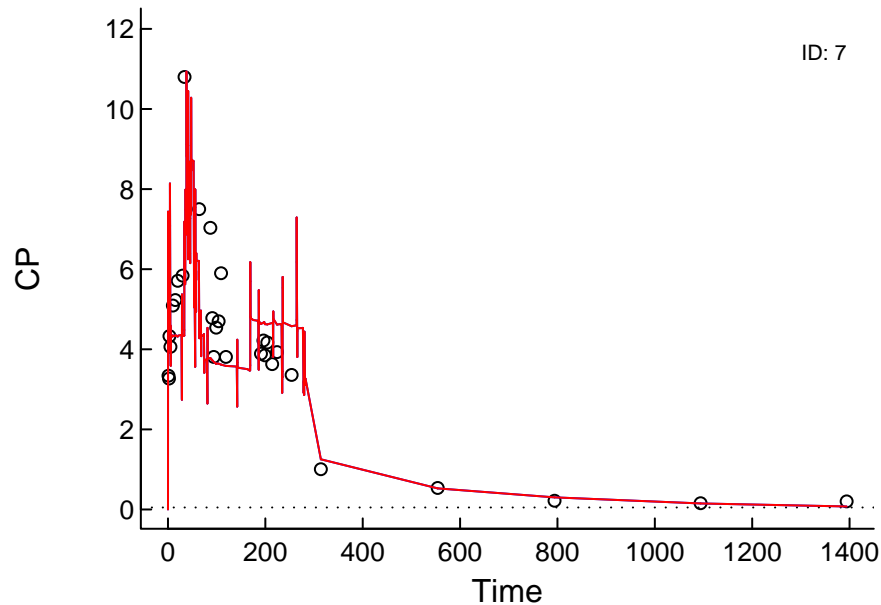
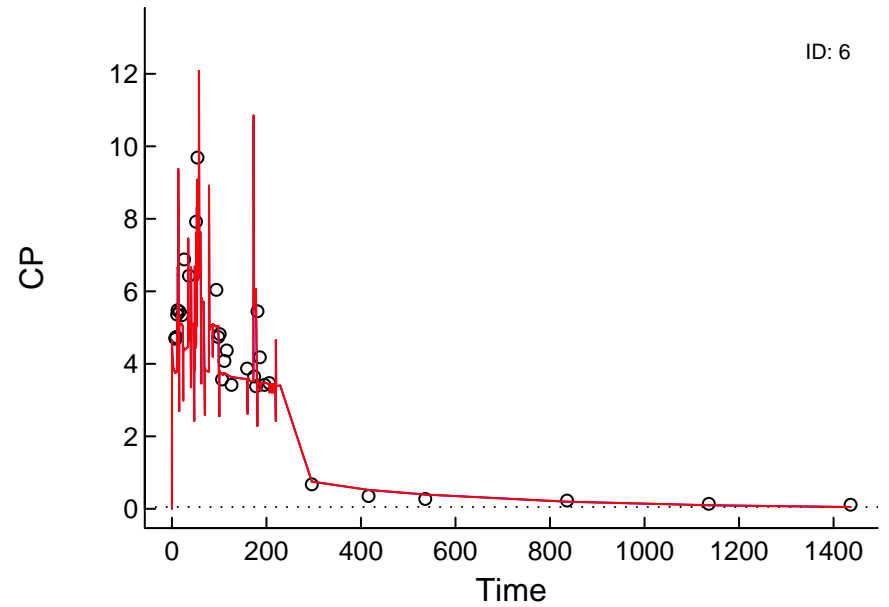
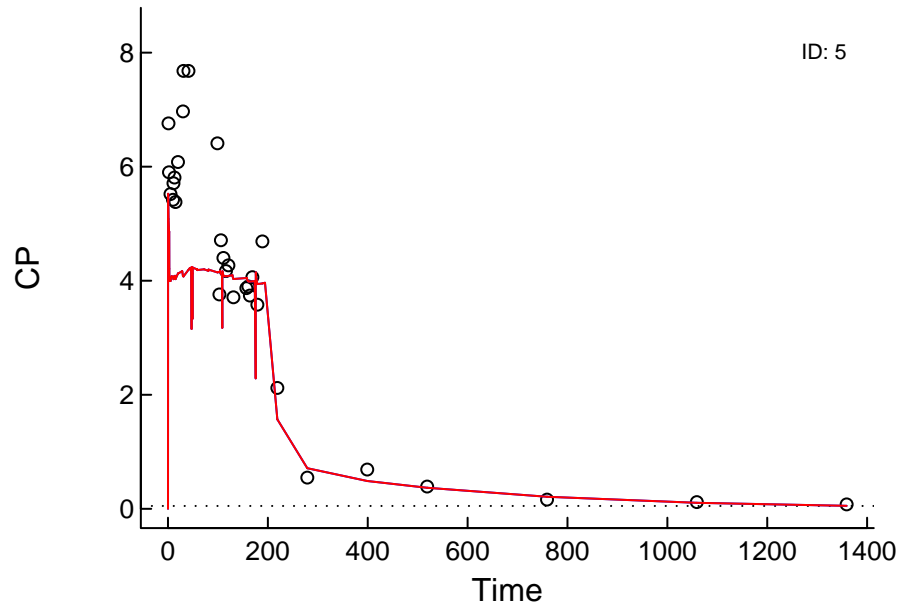
Linear Scale

Circles: Observed; X: BQL; Red: Post Hoc; Blue: Population; Arrows: Doses; Dotted: LOQ



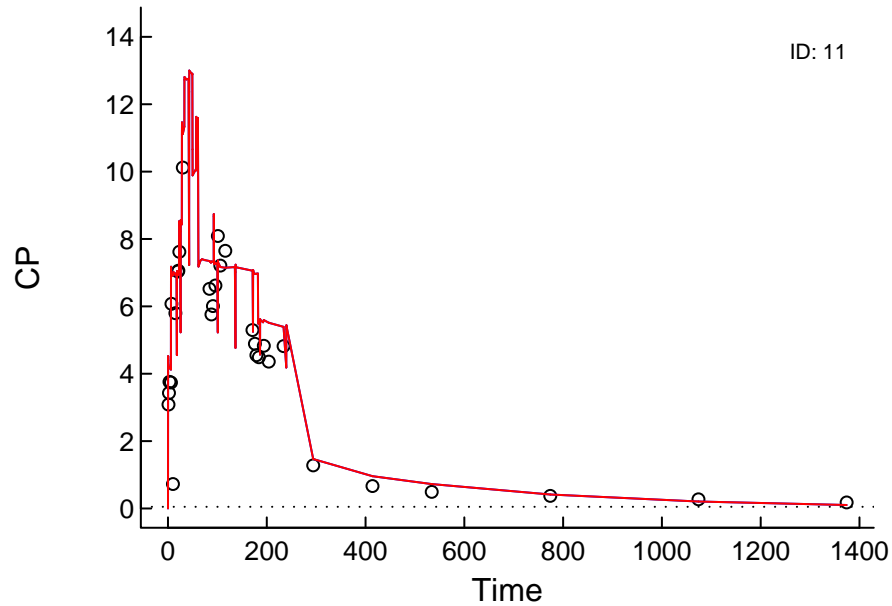
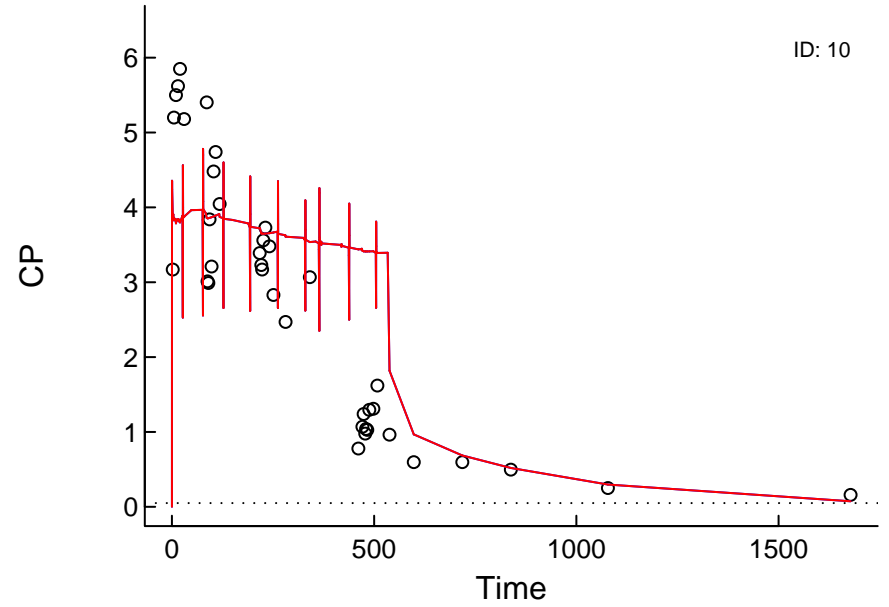
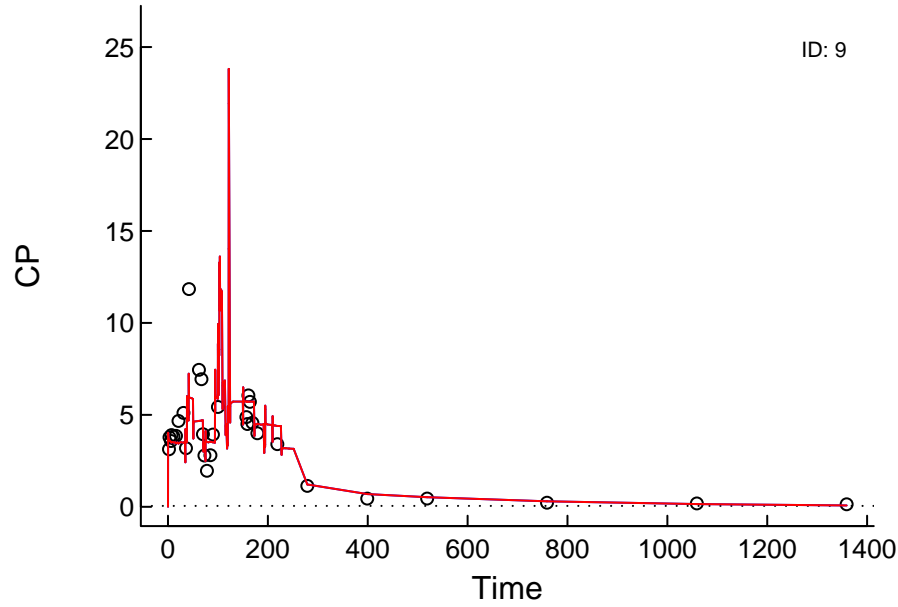
Linear Scale

Circles: Observed; X: BQL; Red: Post Hoc; Blue: Population; Arrows: Doses; Dotted: LOQ



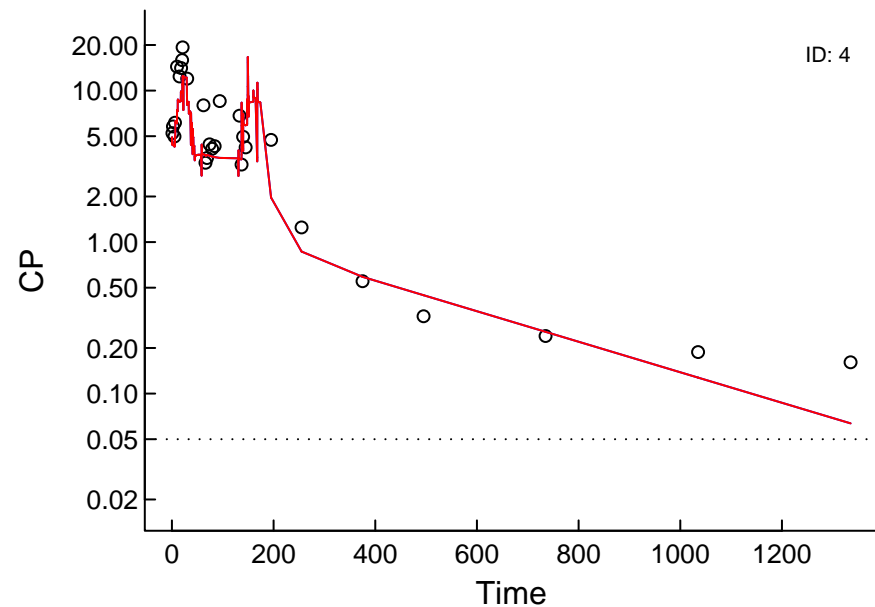
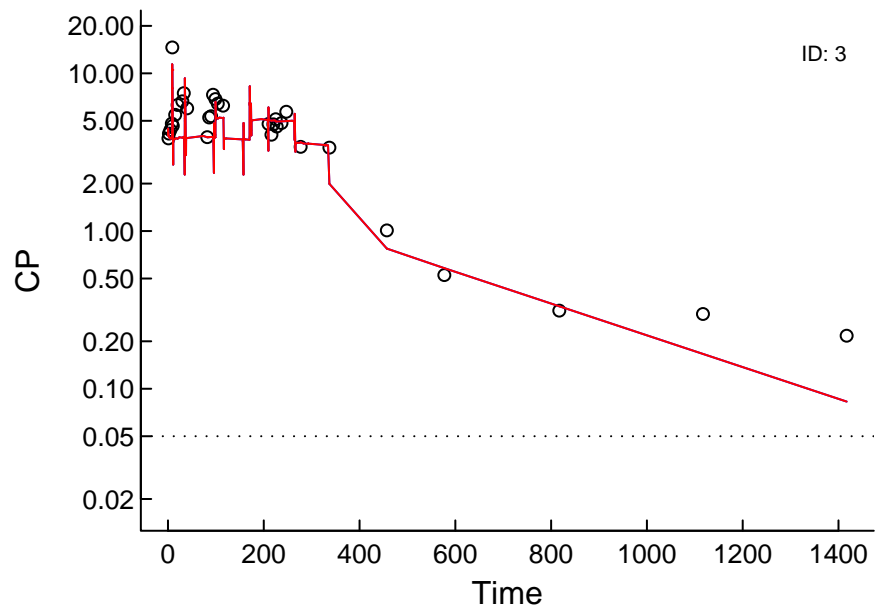
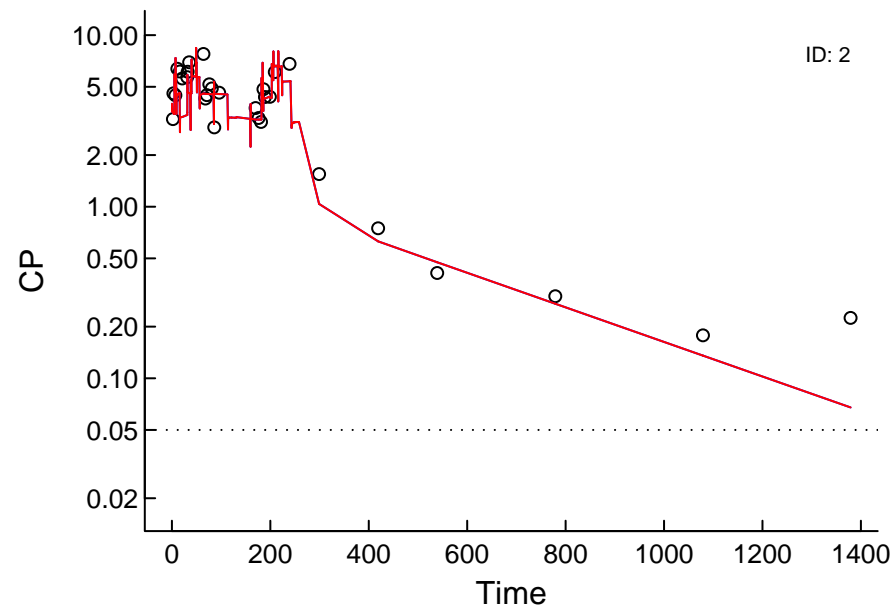
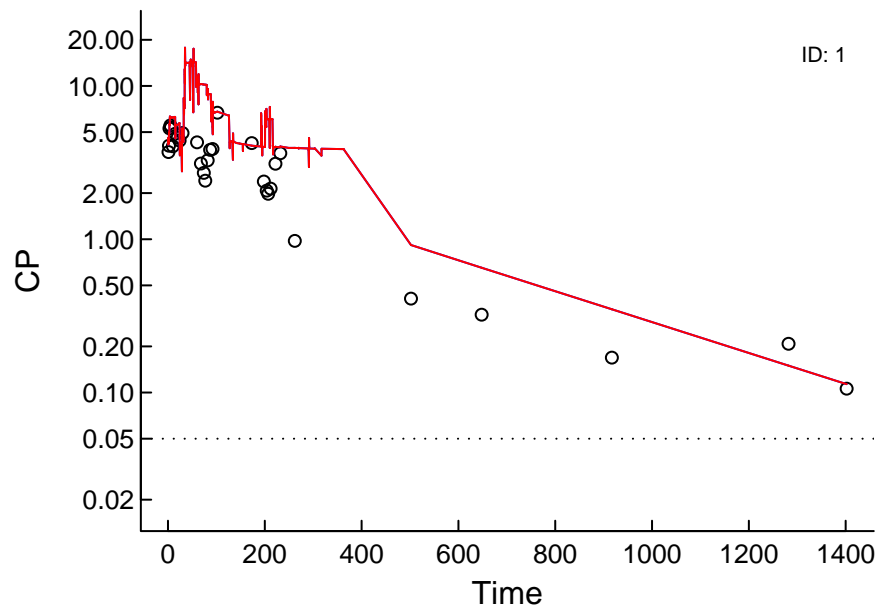
Linear Scale

Circles: Observed; X: BQL; Red: Post Hoc; Blue: Population; Arrows: Doses; Dotted: LOQ



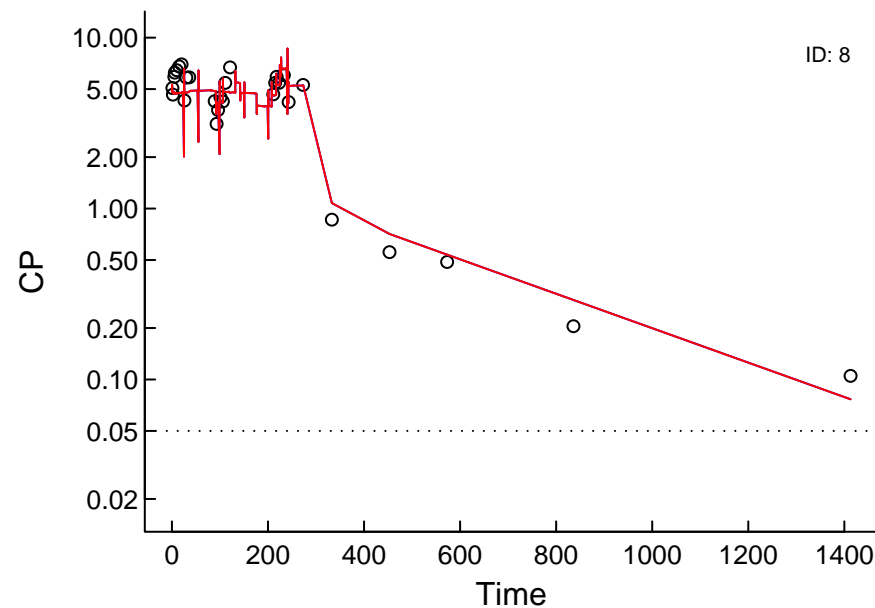
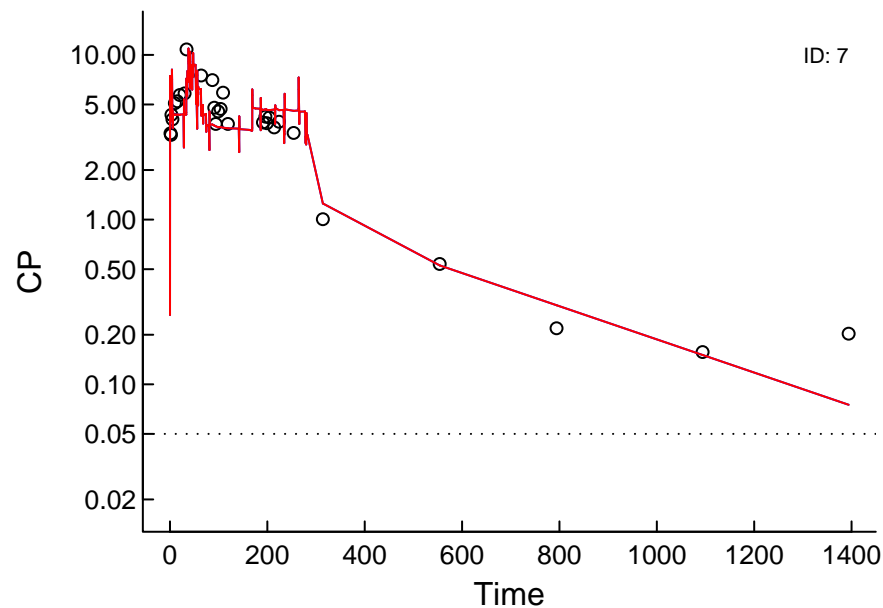
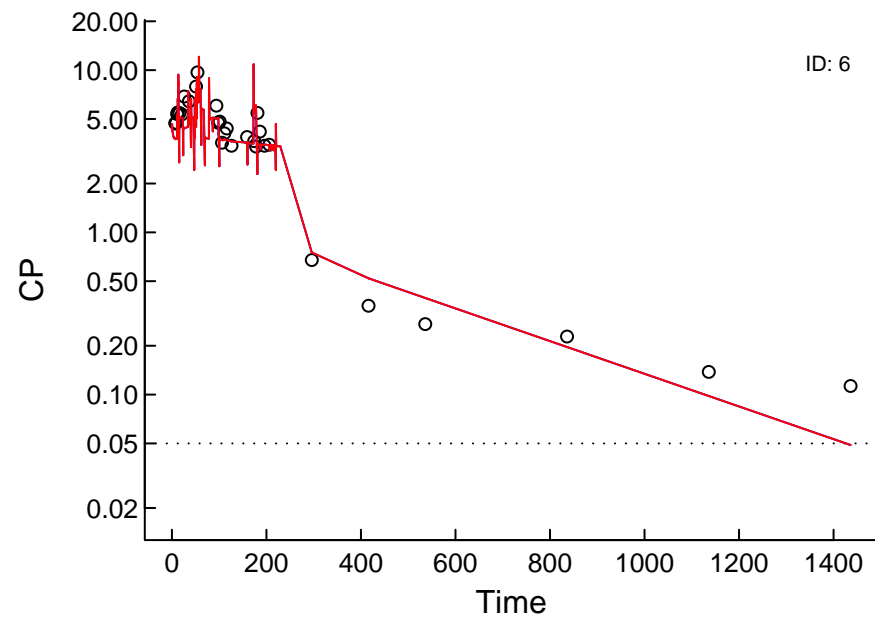
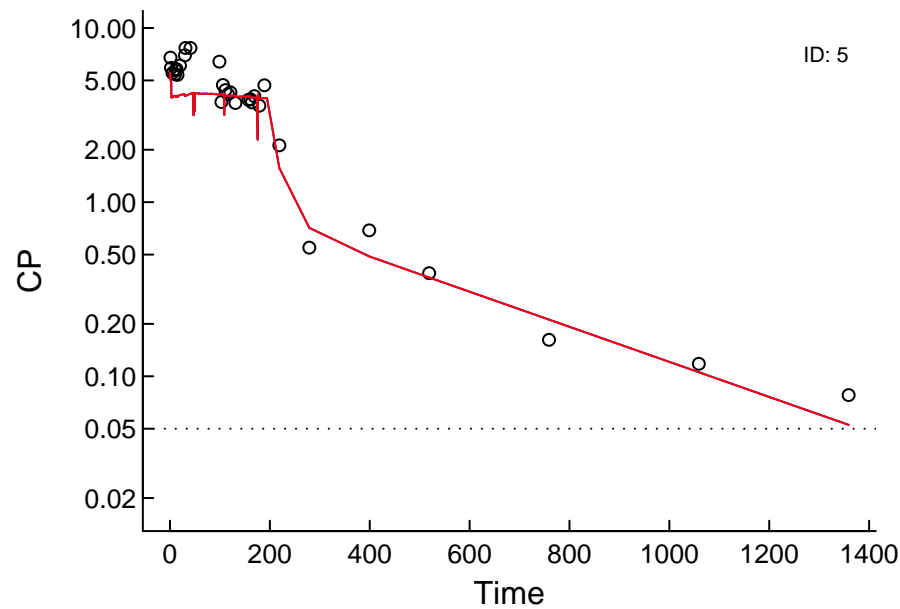
Log Scale

Circles: Observed; X: BQL; Red: Post Hoc; Blue: Population; Arrows: Doses; Dotted: LOQ



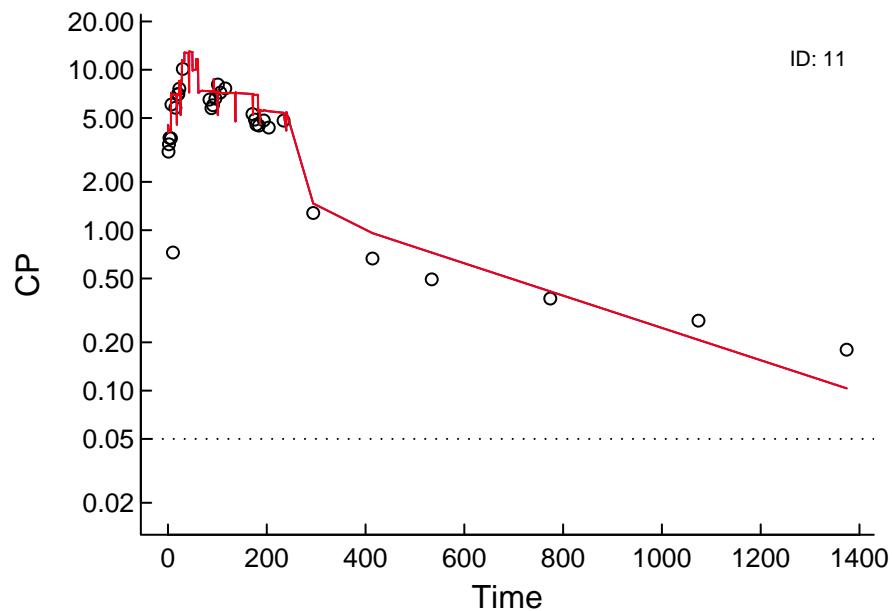
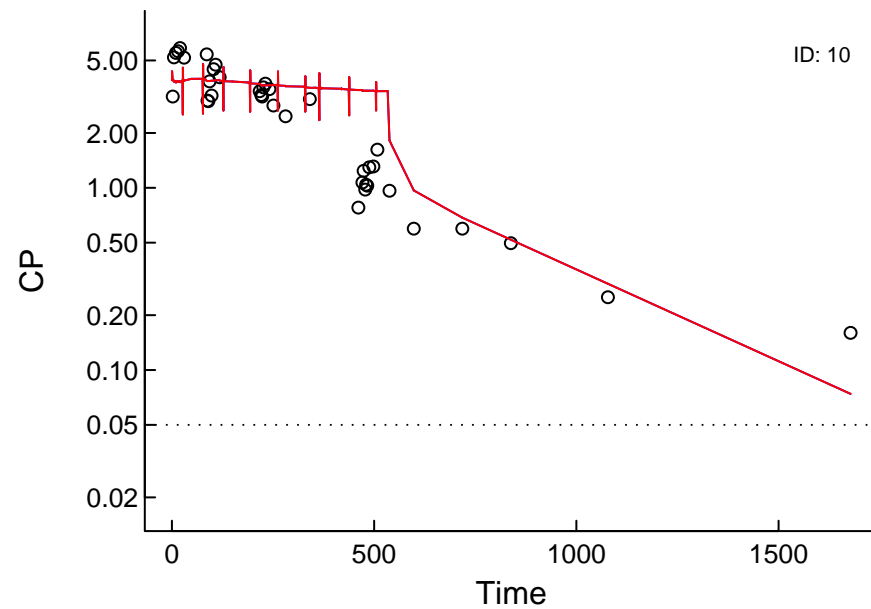
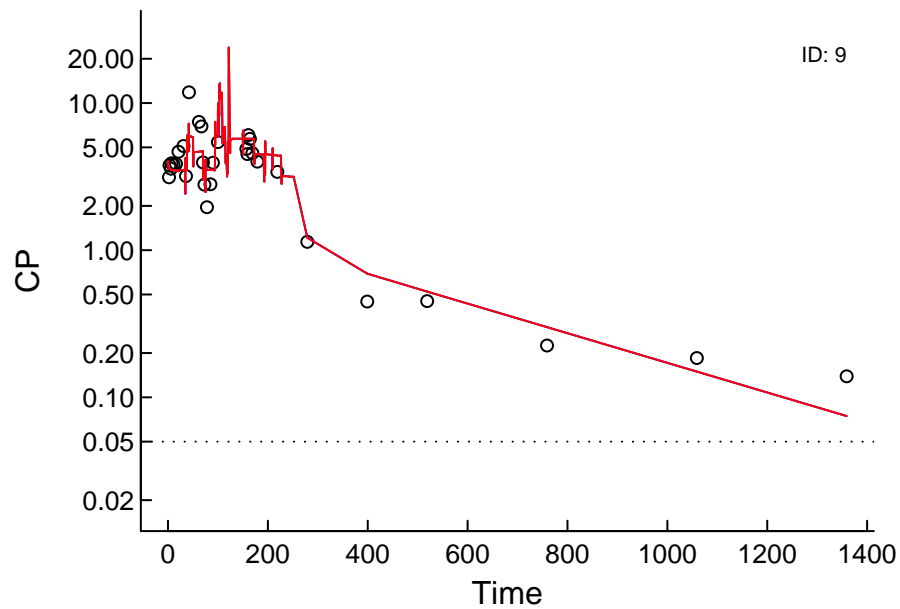
Log Scale

Circles: Observed; X: BQL; Red: Post Hoc; Blue: Population; Arrows: Doses; Dotted: LOQ

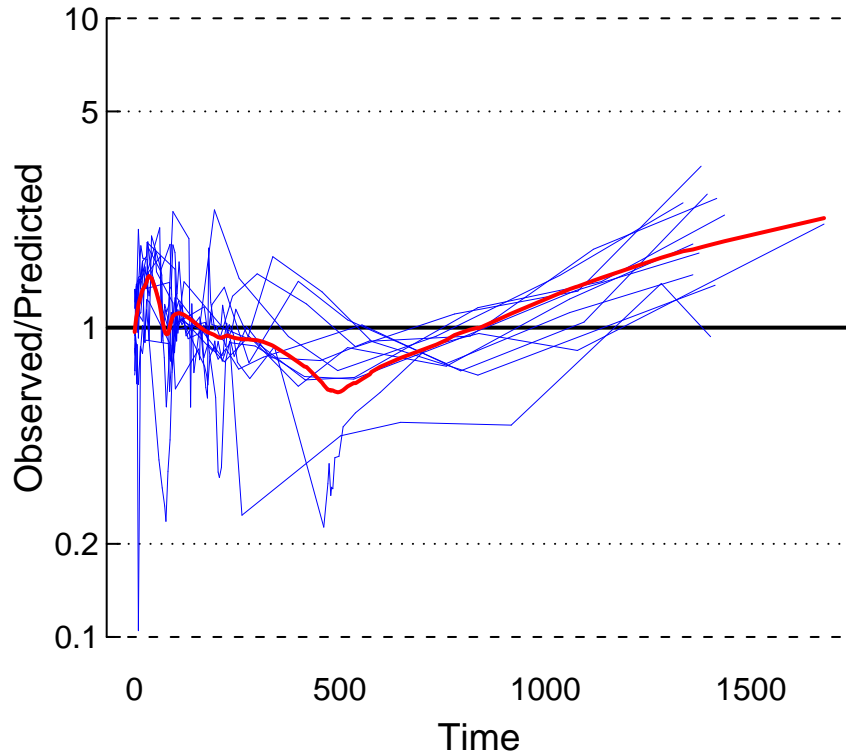


Log Scale

Circles: Observed; X: BQL; Red: Post Hoc; Blue: Population; Arrows: Doses; Dotted: LOQ

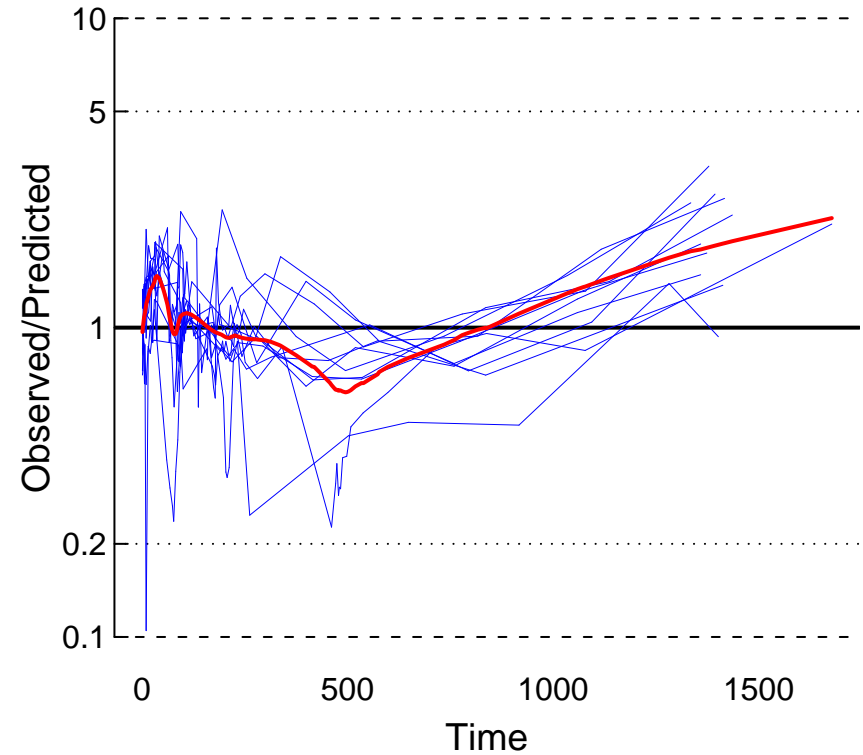


Population



MDPE = +0.016
MDAPE = 0.210

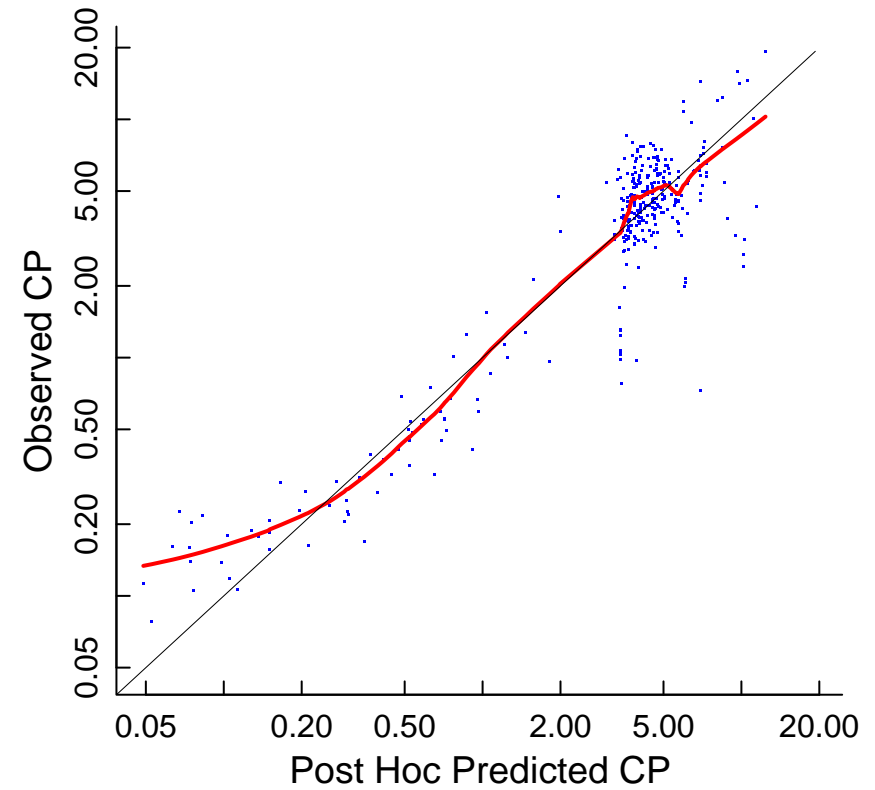
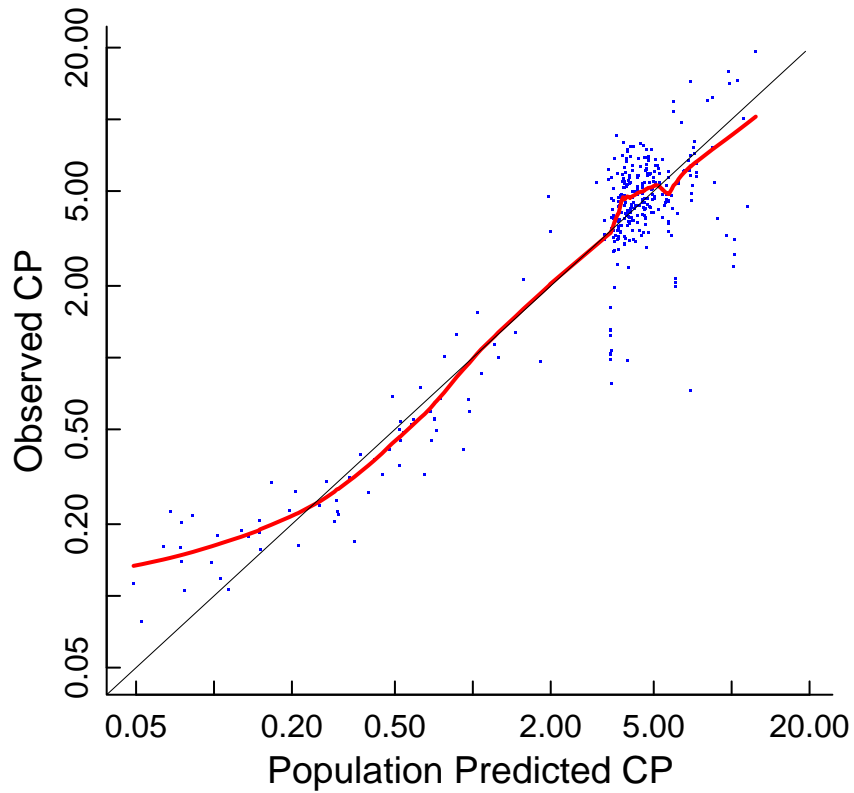
Post Hoc

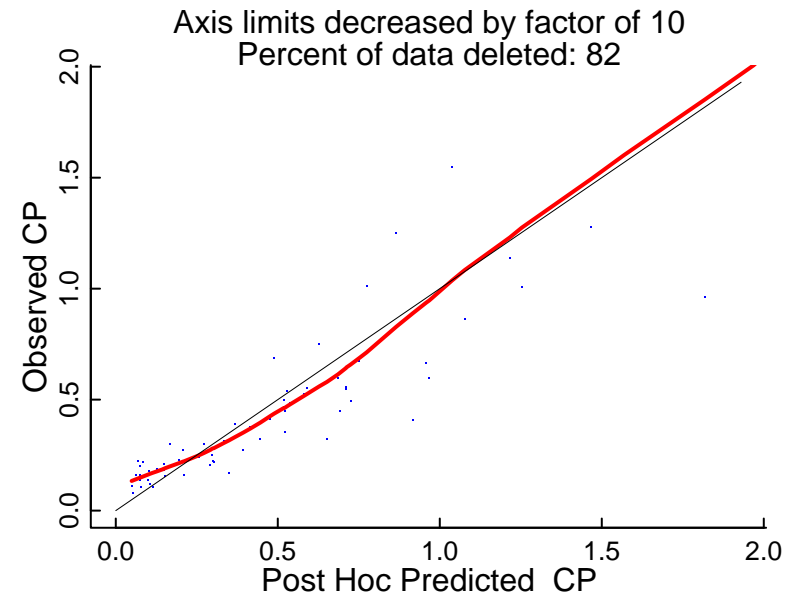
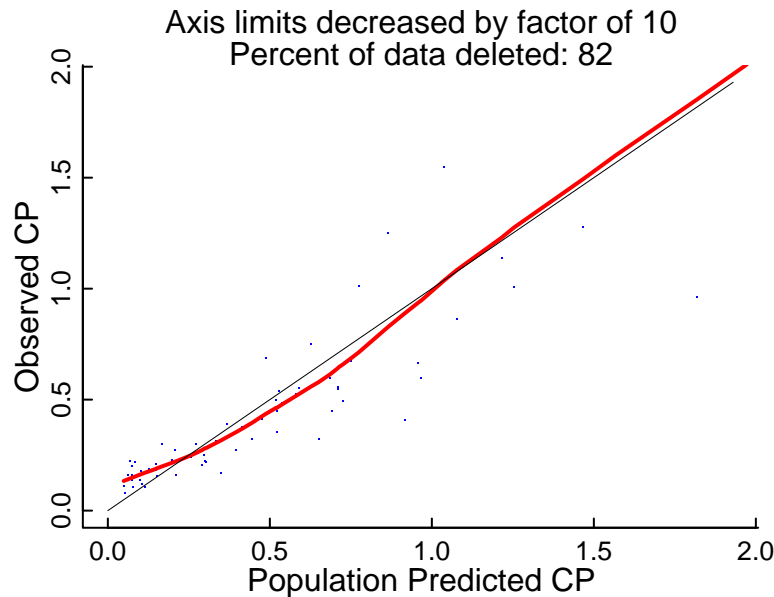
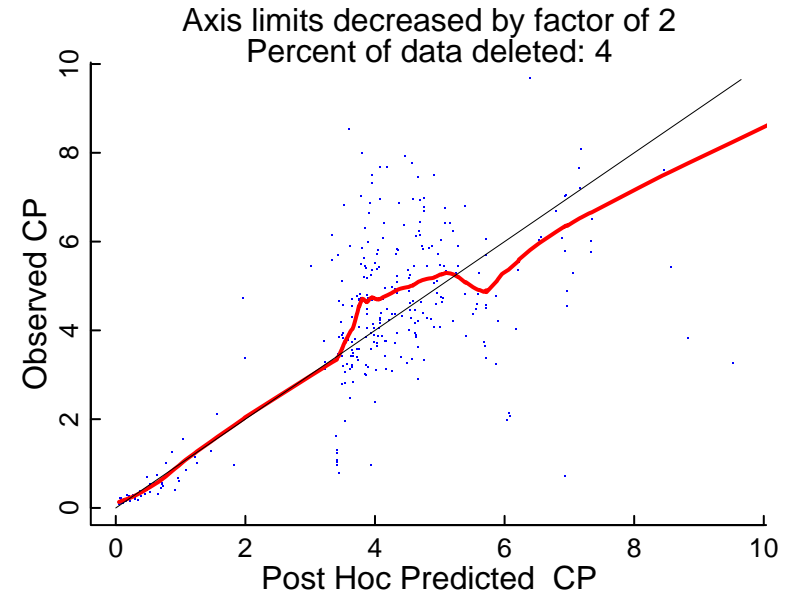
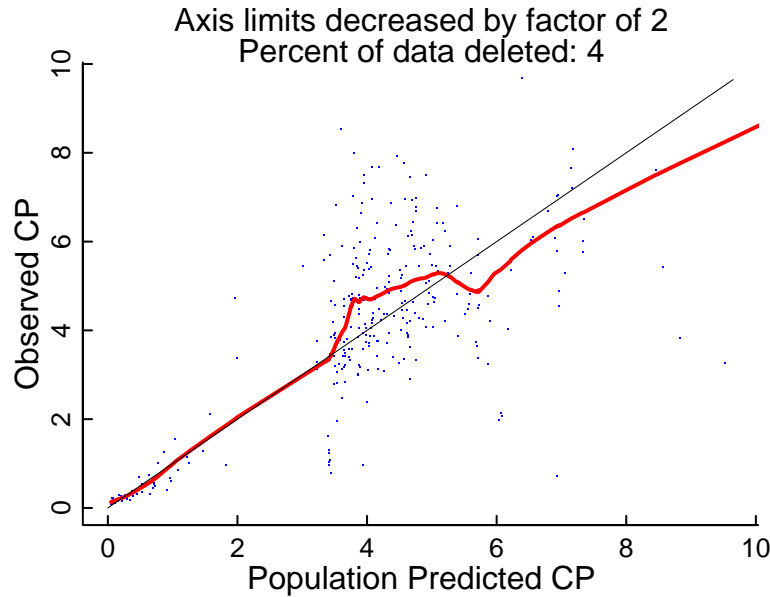


MDPE = +0.016
MDAPE = 0.210

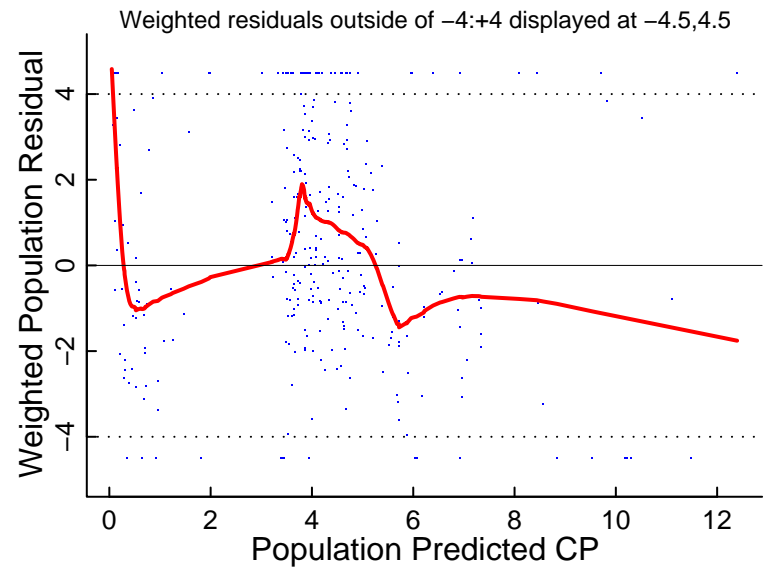
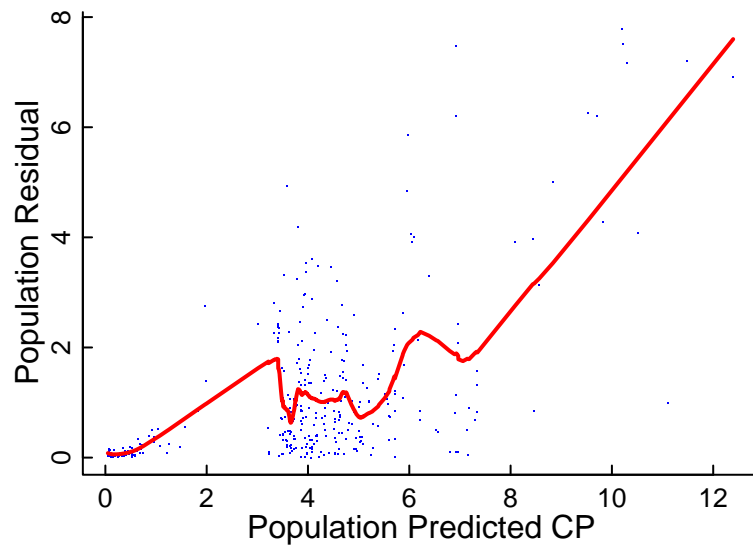
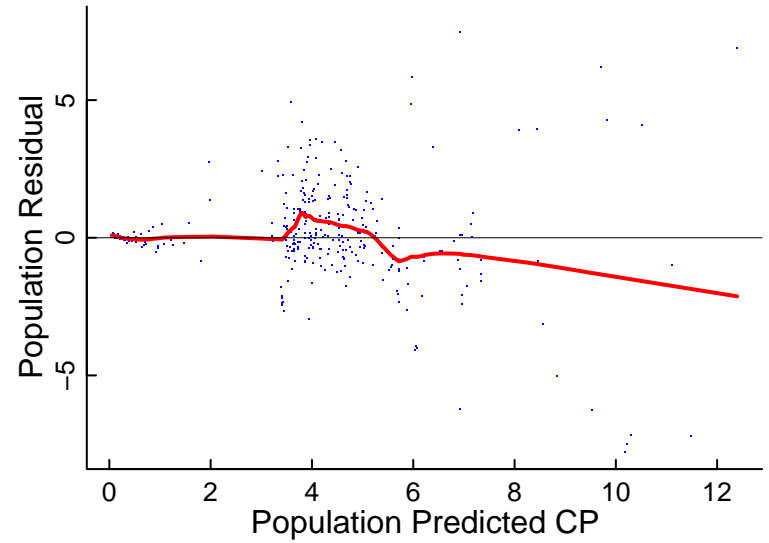
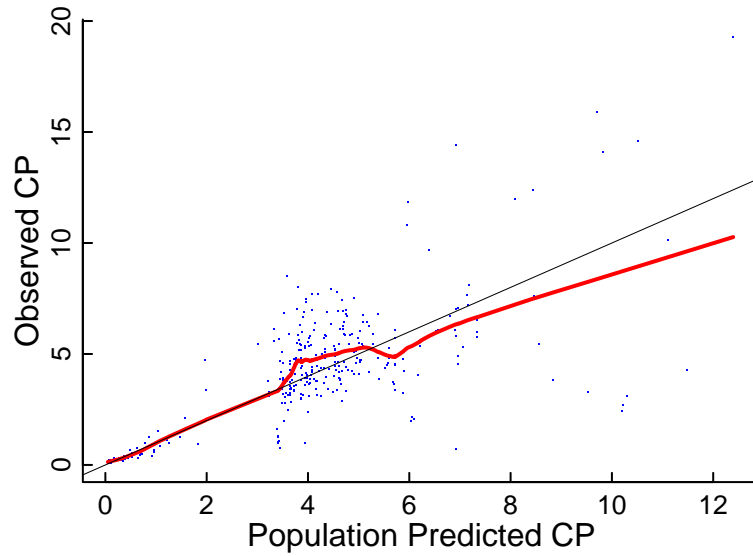
Goodness of fit

Black: line of unity; Red: smoother

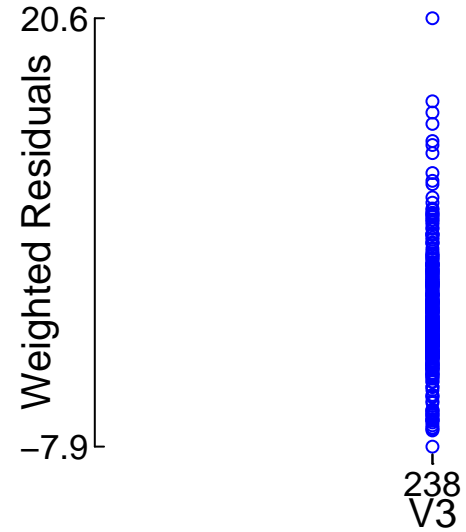
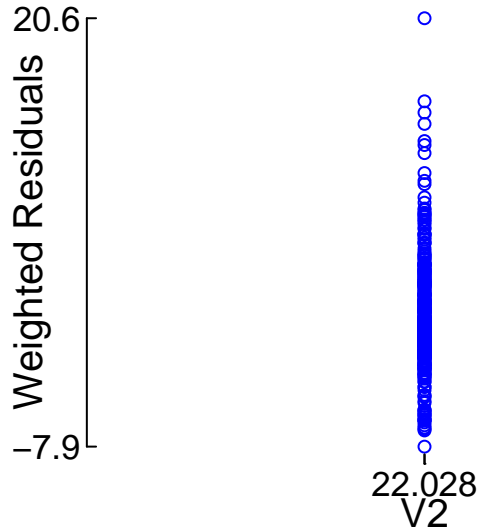
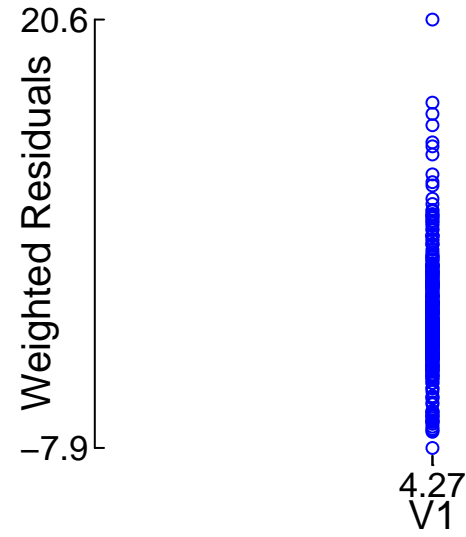
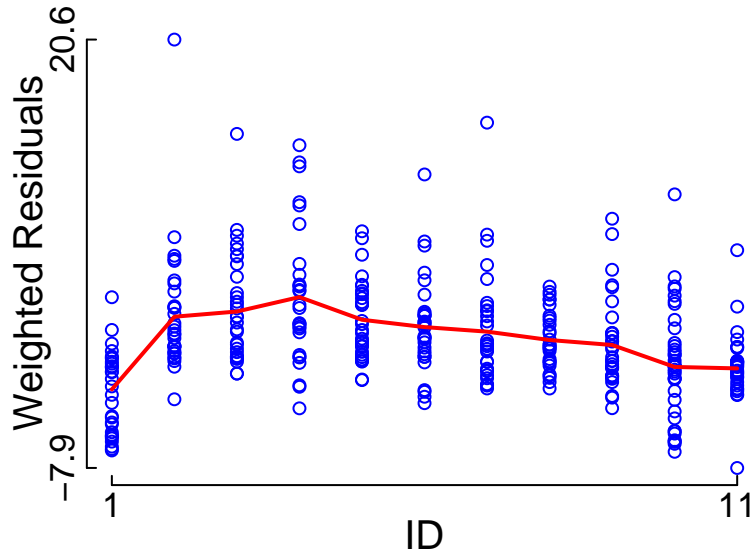




Black: line of unity; Red: smoother

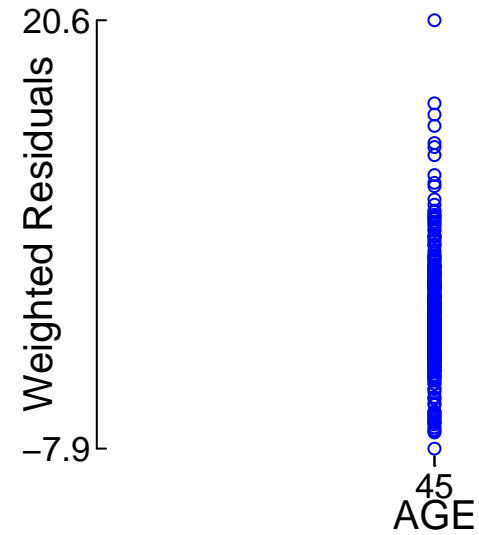
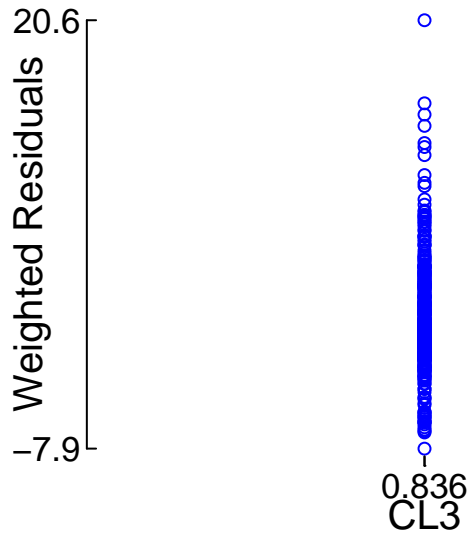
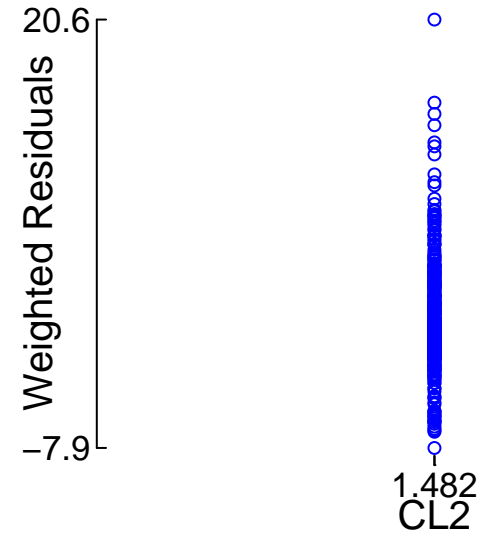
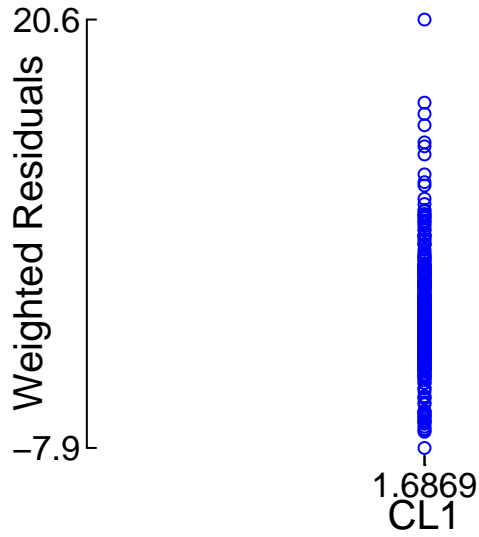


"Control.Schnider.Simulation.txt" (4284.711) vs. Weighted Residuals



"Control.Schnider.Simulation.txt" (4284.711)
vs. Weighted Residuals

Red: smoother



"Control.Schnider.Simulation.txt" (4284.711)
vs. Weighted Residuals

Red: smoother

Weighted Residuals

Weighted Residuals

Weighted Residuals

Weighted Residuals

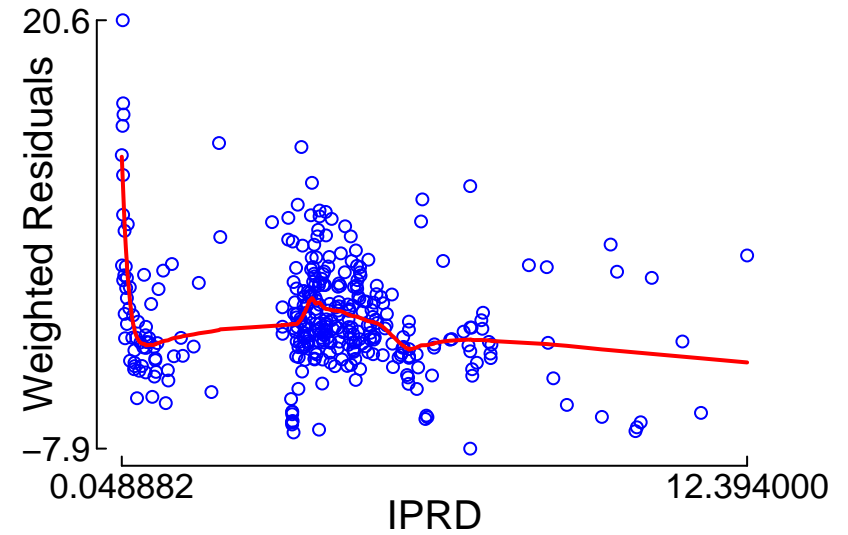
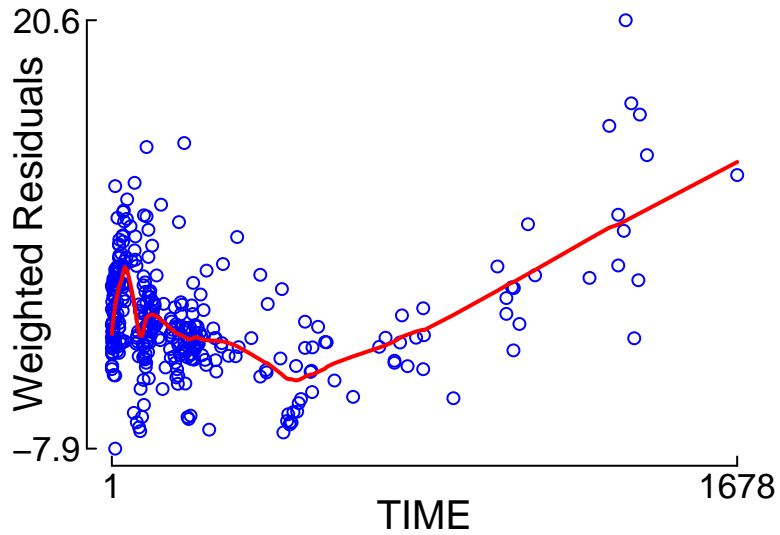
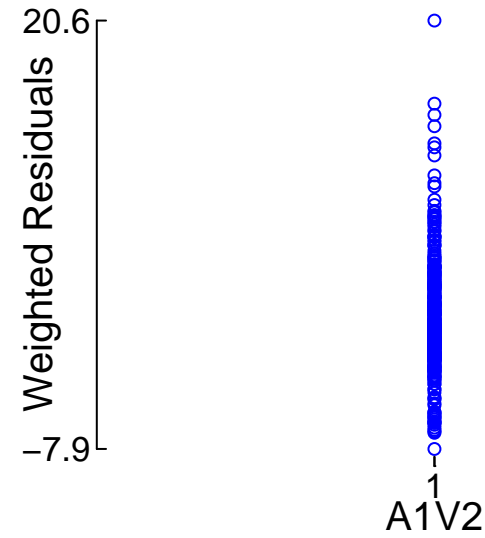
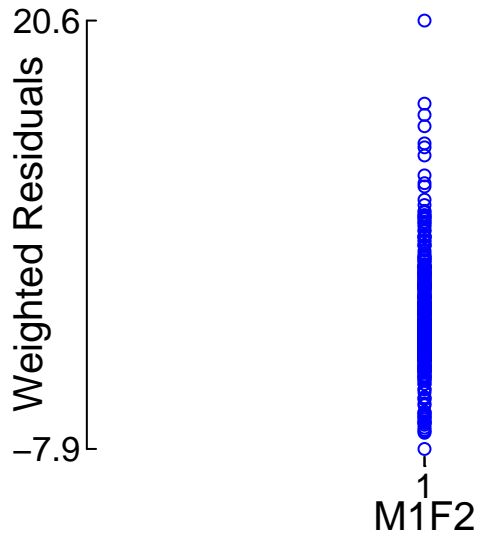
175
HT

70
WT

56.52
LBM

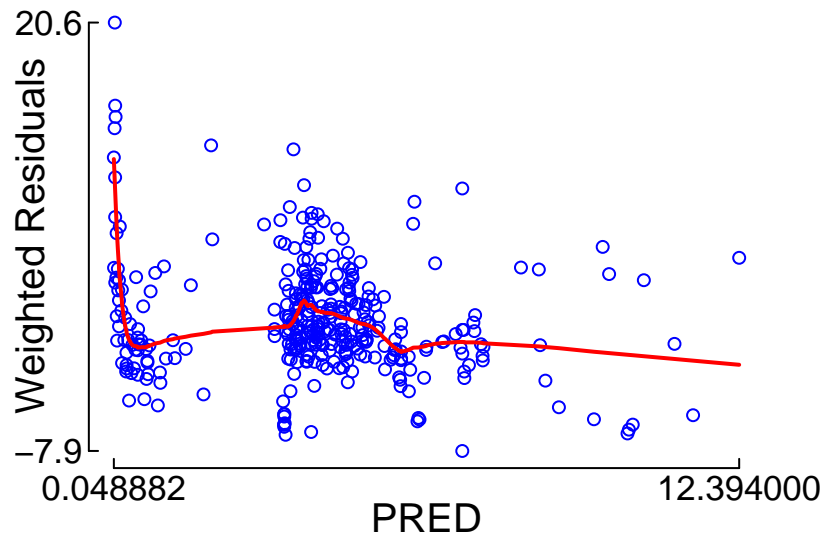
1.8481
BSA

"Control.Schnider.Simulation.txt" (4284.711) vs. Weighted Residuals



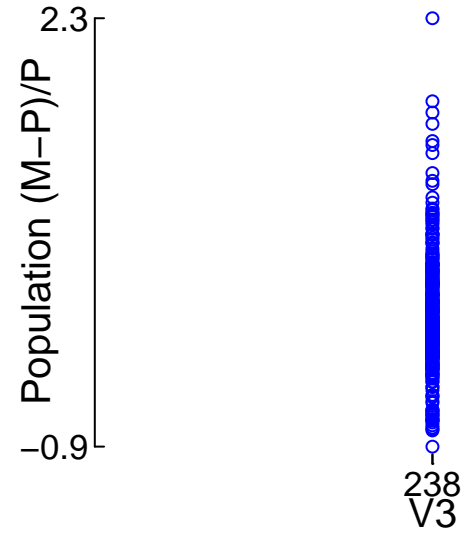
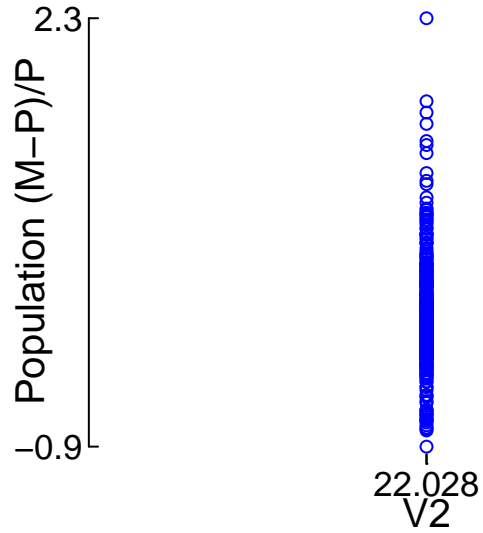
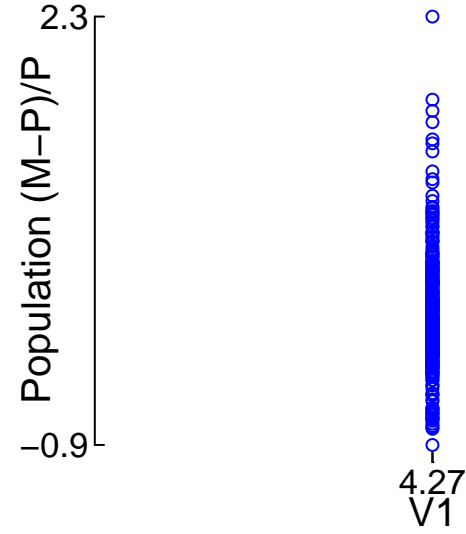
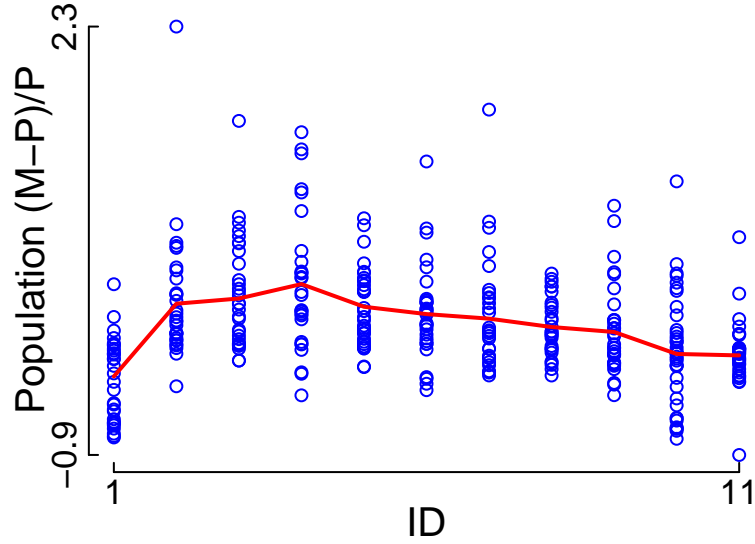
Red: smoother

"Control.Schnider.Simulation.txt" (4284.711)
vs. Weighted Residuals



Red: smoother

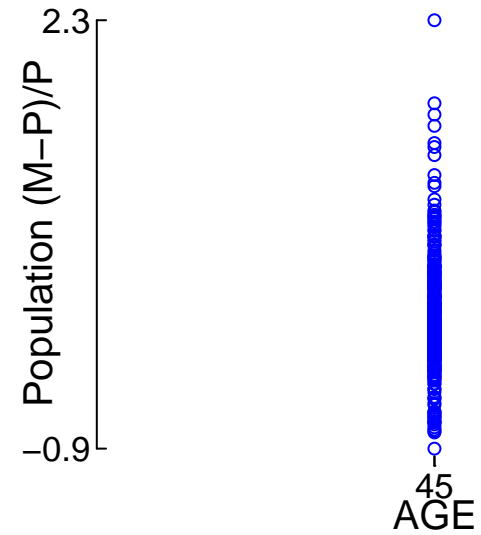
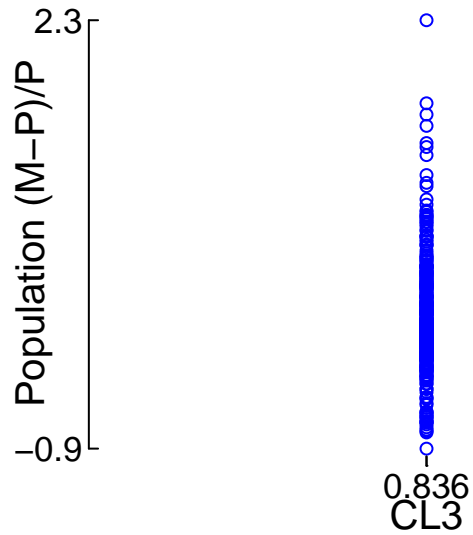
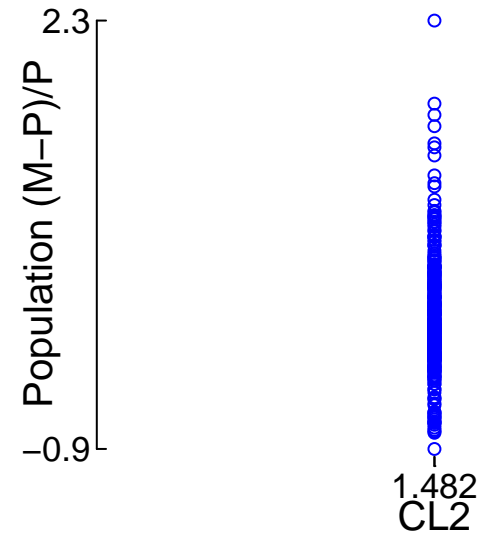
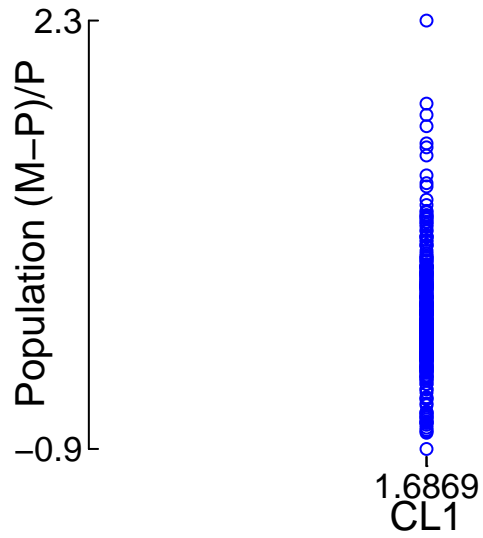
"Control.Schnider.Simulation.txt" (4284.711)
vs. Population (M-P)/P



Red: smoother

"Control.Schnider.Simulation.txt" (4284.711)
vs. Population (M-P)/P

Red: smoother



"Control.Schnider.Simulation.txt" (4284.711)
vs. Population (M-P)/P

Red: smoother

Population (M-P)/P



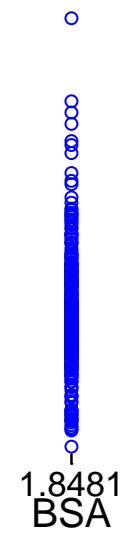
Population (M-P)/P



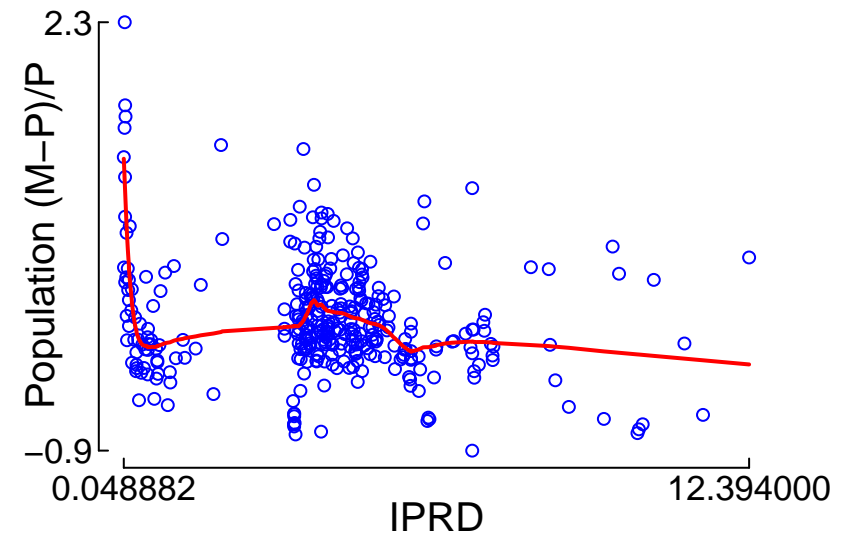
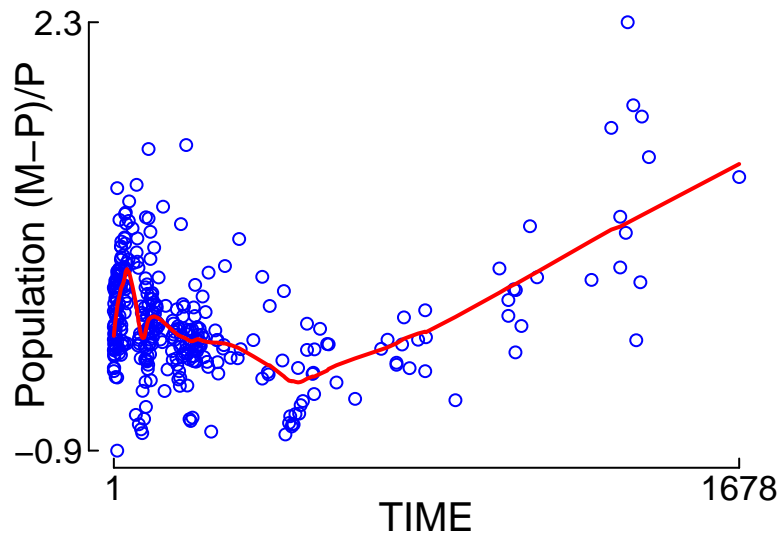
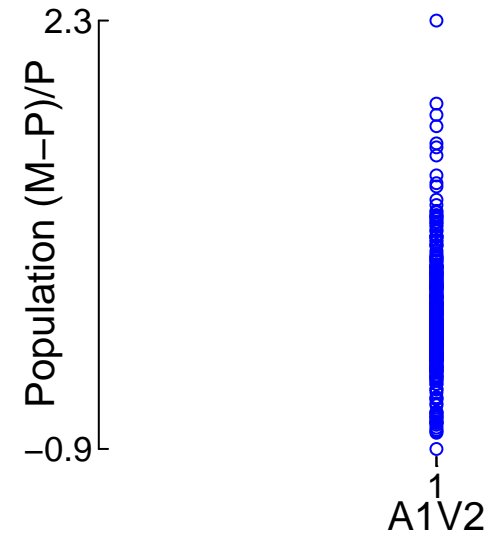
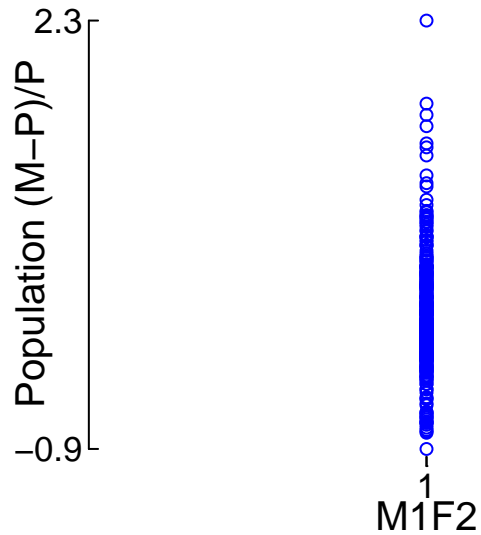
Population (M-P)/P



Population (M-P)/P

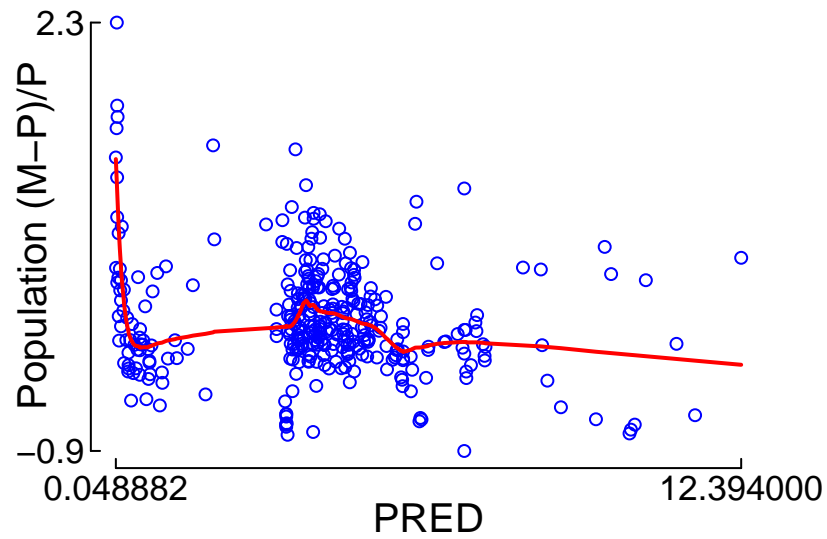


"Control.Schnider.Simulation.txt" (4284.711) vs. Population (M-P)/P



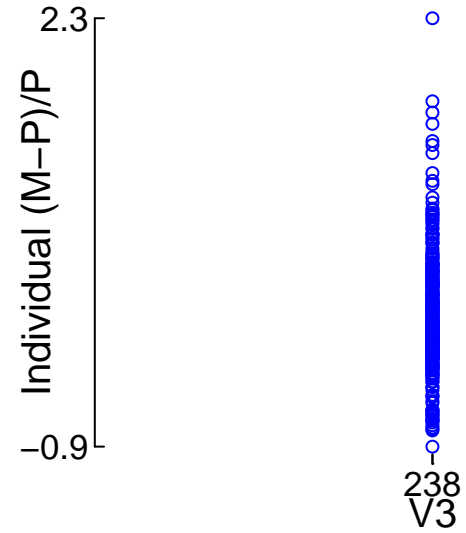
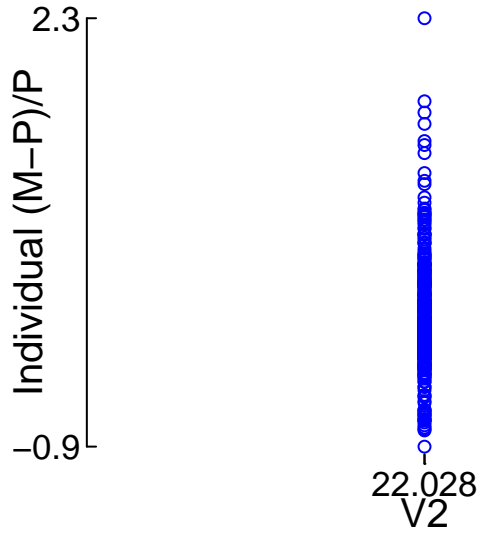
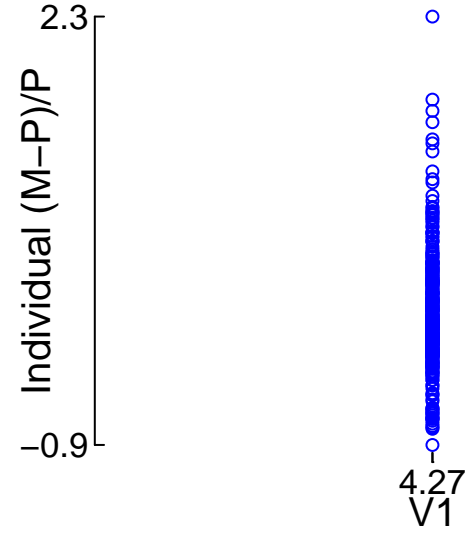
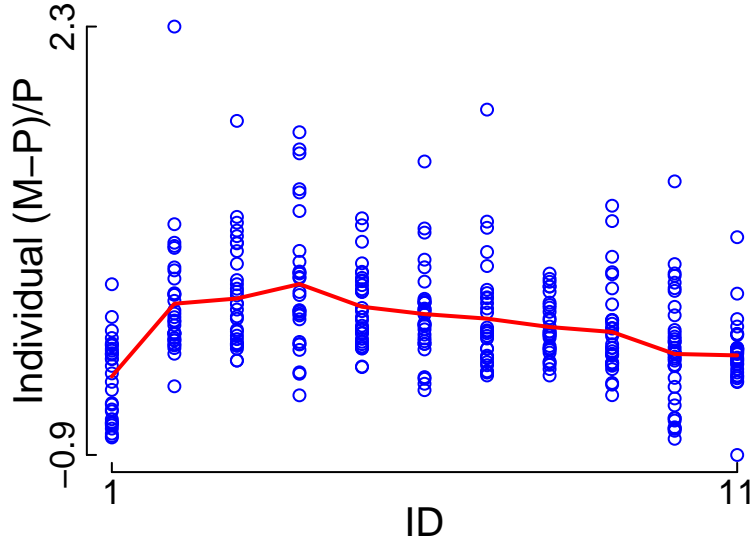
Red: smoother

"Control.Schnider.Simulation.txt" (4284.711)
vs. Population (M-P)/P



Red: smoother

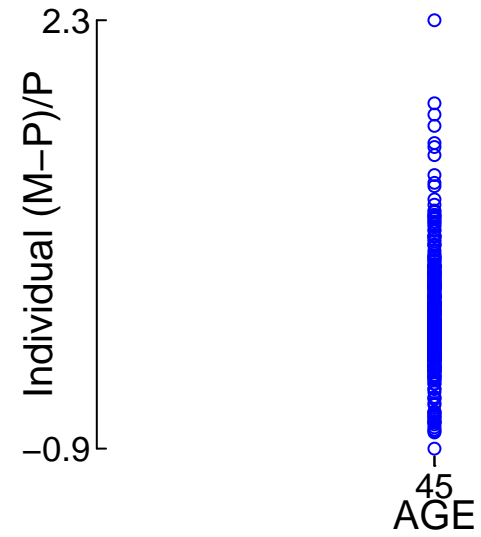
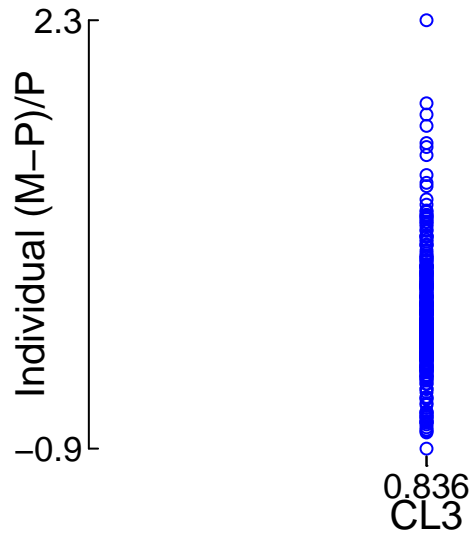
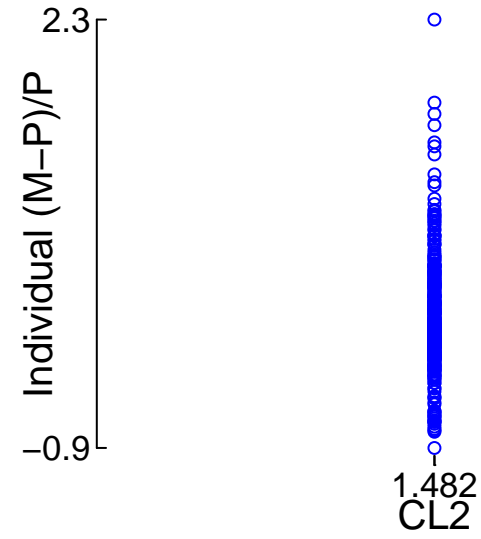
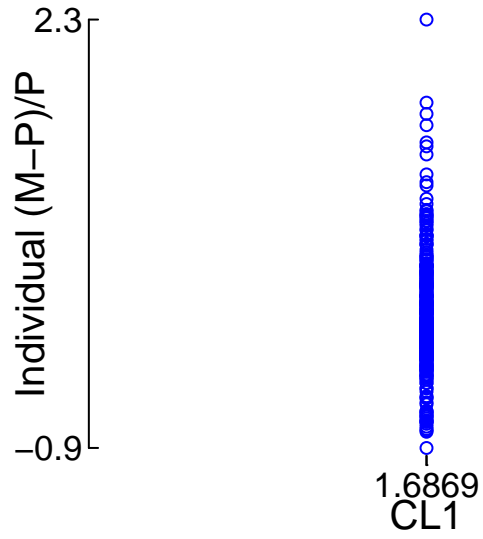
"Control.Schnider.Simulation.txt" (4284.711)
vs. Individual (M-P)/P



Red: smoother

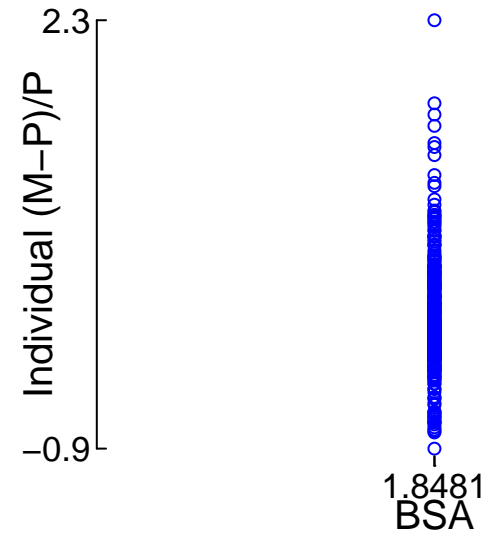
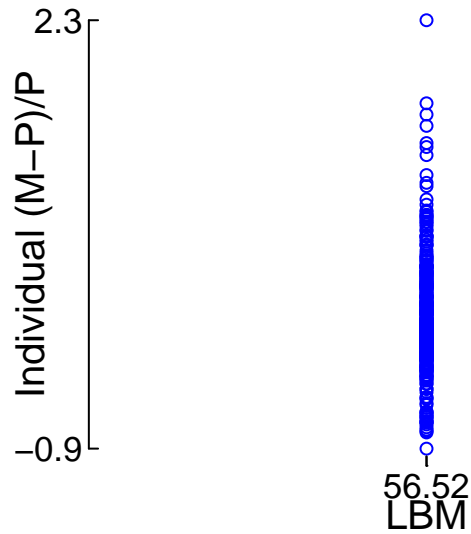
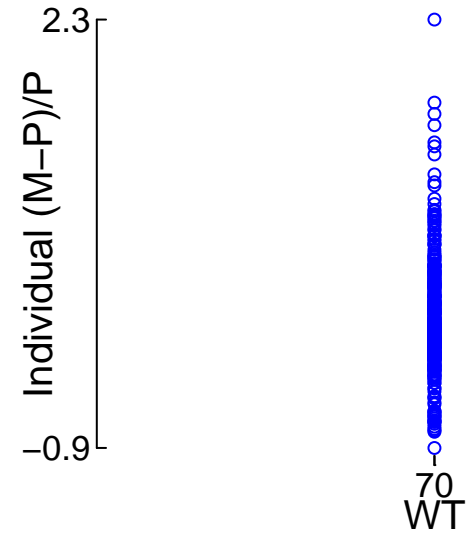
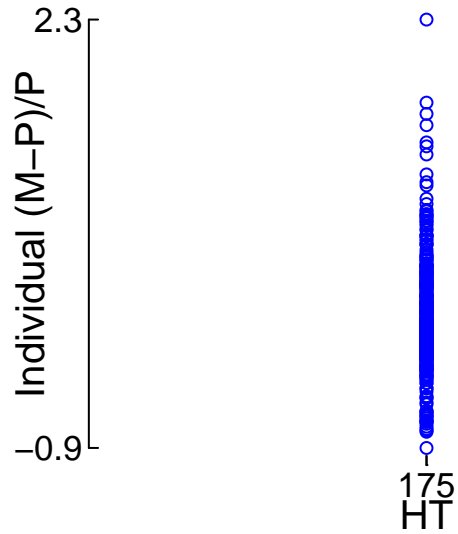
"Control.Schnider.Simulation.txt" (4284.711)
vs. Individual (M-P)/P

Red: smoother



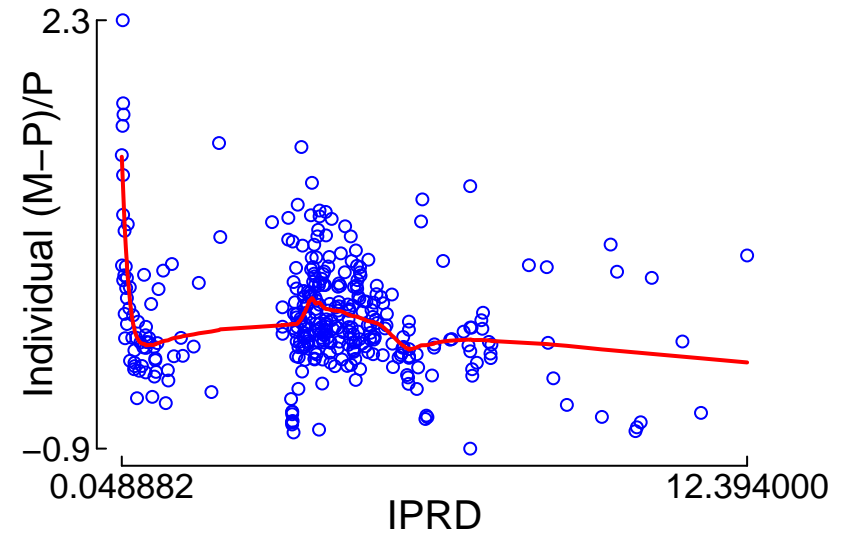
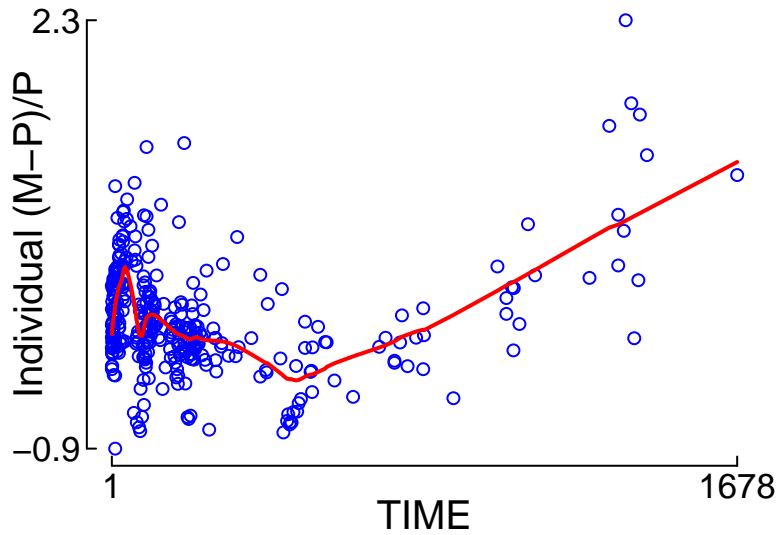
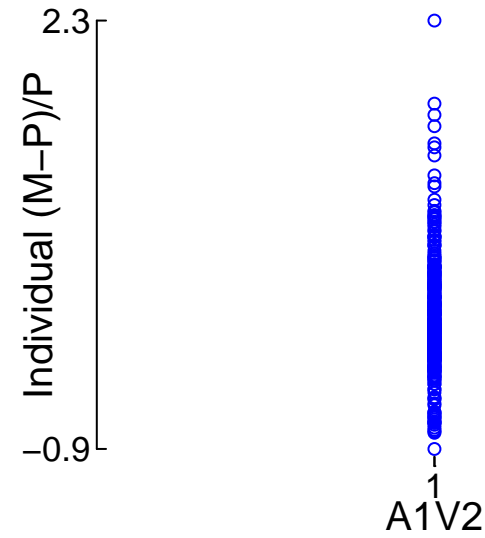
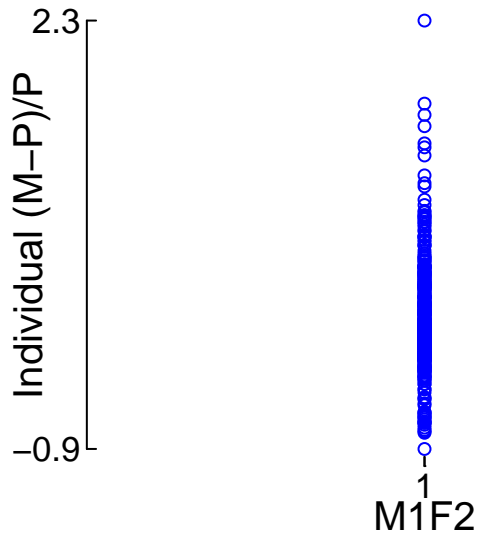
"Control.Schnider.Simulation.txt" (4284.711)
vs. Individual (M-P)/P

Red: smoother

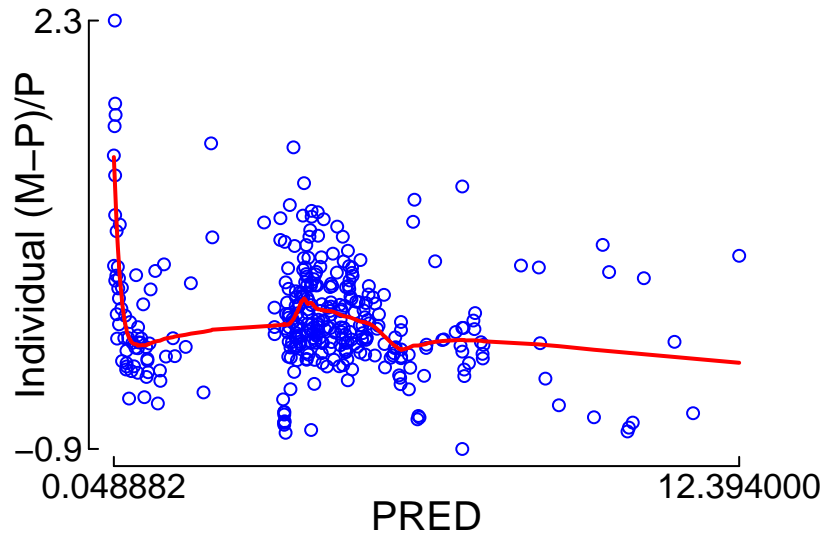


"Control.Schnider.Simulation.txt" (4284.711) vs. Individual (M-P)/P

Red: smoother



"Control.Schnider.Simulation.txt" (4284.711)
vs. Individual (M-P)/P



Red: smoother